

sereno  
BAY HARBOR ISLANDS

UNIT  
**A**

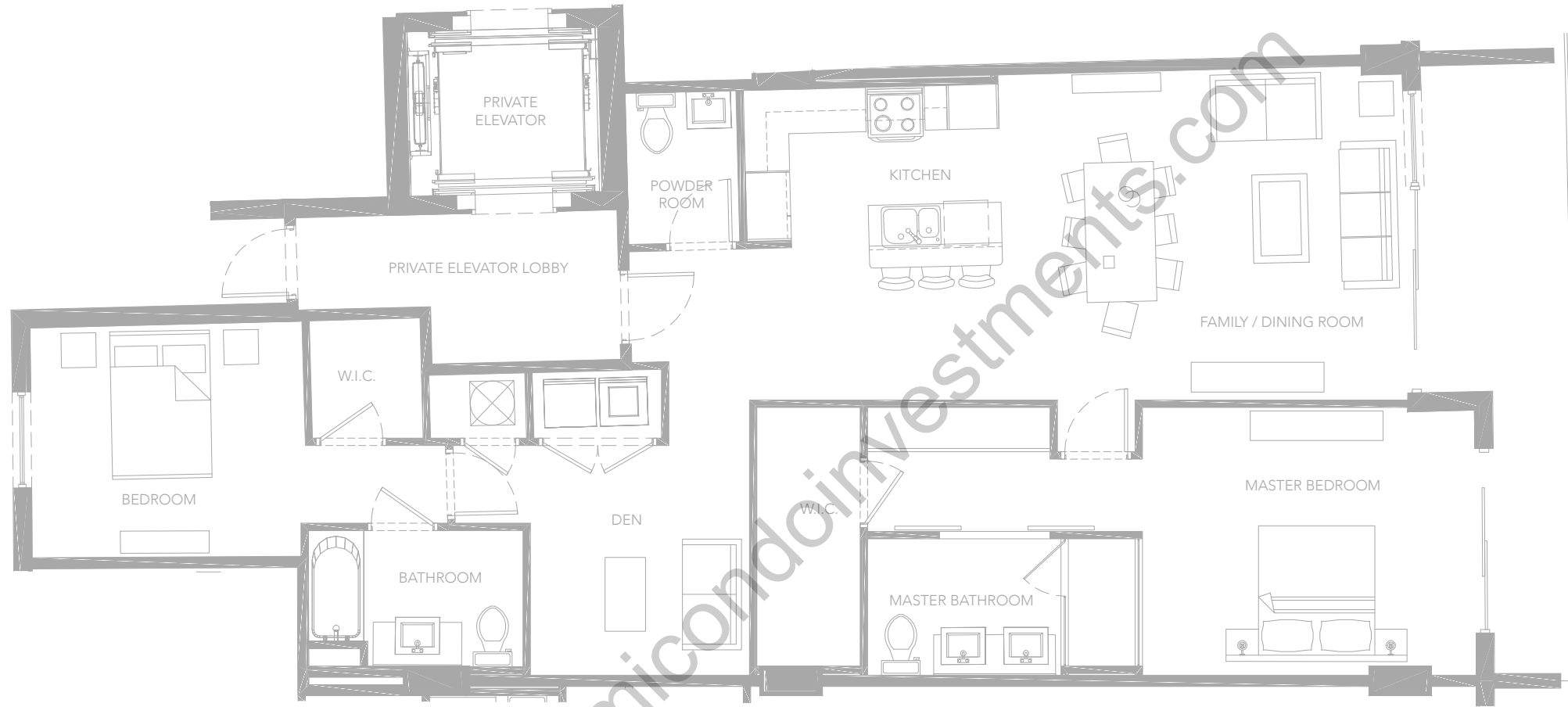
**4** Bedroom

**3.5** Bathroom

INT. AREA 2,150 ft<sup>2</sup> / 199.74 m<sup>2</sup>    EXT. AREA 2,150 ft<sup>2</sup> / 199.74 m<sup>2</sup>



The sketches, renderings, graphic materials, plans, specifications, terms, conditions and statements contained in this brochure are proposed only, and the Developer reserves the right to modify, revise or withdraw any or all of same in its sole discretion and without prior notice. All improvements, designs and construction are subject to first obtaining the appropriate federal, state and local permits and approvals for same. The photographs contained in this brochure may be stock photography and are used to depict the spirit of the lifestyles to be achieved rather than any that may exist or that may be proposed and are merely intended as illustrations of the activities and concepts depicted therein. The features, plans and specifications described above are proposed only, and the Developer reserves the right to modify, revise or withdraw any or all of same in its sole discretion and without prior notice. Without limiting the generality of the foregoing, Developer reserves the right to substitute any of the foregoing with items of similar or better value, in Developer's opinion.



UNIT  
**B**

**2**

Bedroom  
1,507 ft<sup>2</sup> / 140 m<sup>2</sup>

INT. AREA

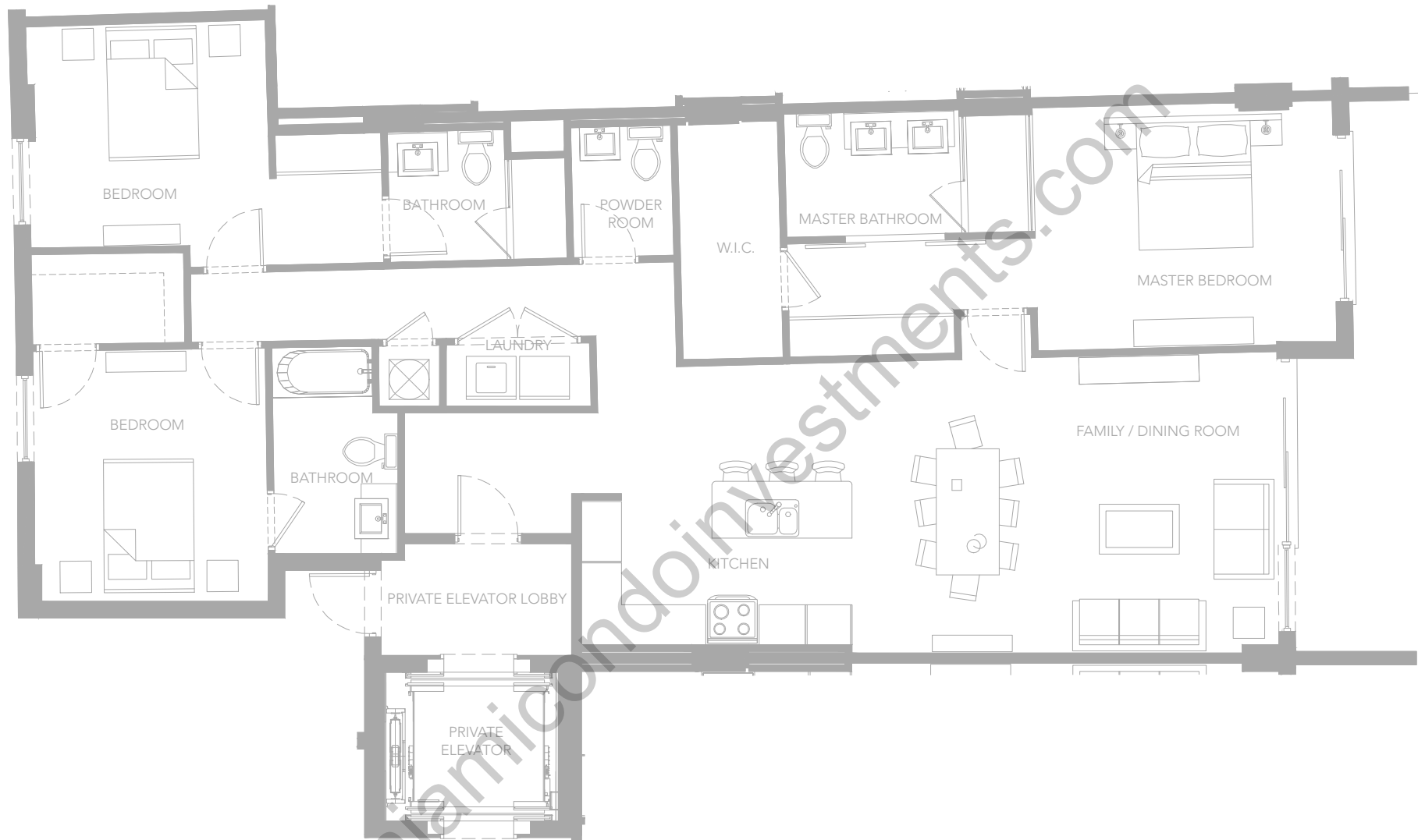
**2.5**

Bathroom  
157 ft<sup>2</sup> / 14.5 m<sup>2</sup>

EXT. AREA



The sketches, renderings, graphic materials, plans, specifications, terms, conditions and statements contained in this brochure are proposed only, and the Developer reserves the right to modify, revise or withdraw any or all of same in its sole discretion and without prior notice. All improvements, designs and construction are subject to first obtaining the appropriate federal, state and local permits and approvals for same. The photographs contained in this brochure may be stock photography and are used to depict the spirit of the lifestyles to be achieved rather than any that may exist or that may be proposed and are merely intended as illustrations of the activities and concepts depicted therein. The features, plans and specifications described above are proposed only, and the Developer reserves the right to modify, revise or withdraw any or all of same in its sole discretion and without prior notice. Without limiting the generality of the foregoing, Developer reserves the right to substitute any of the foregoing with items of similar or better value, in Developer's opinion.



UNIT



3

Bedroom

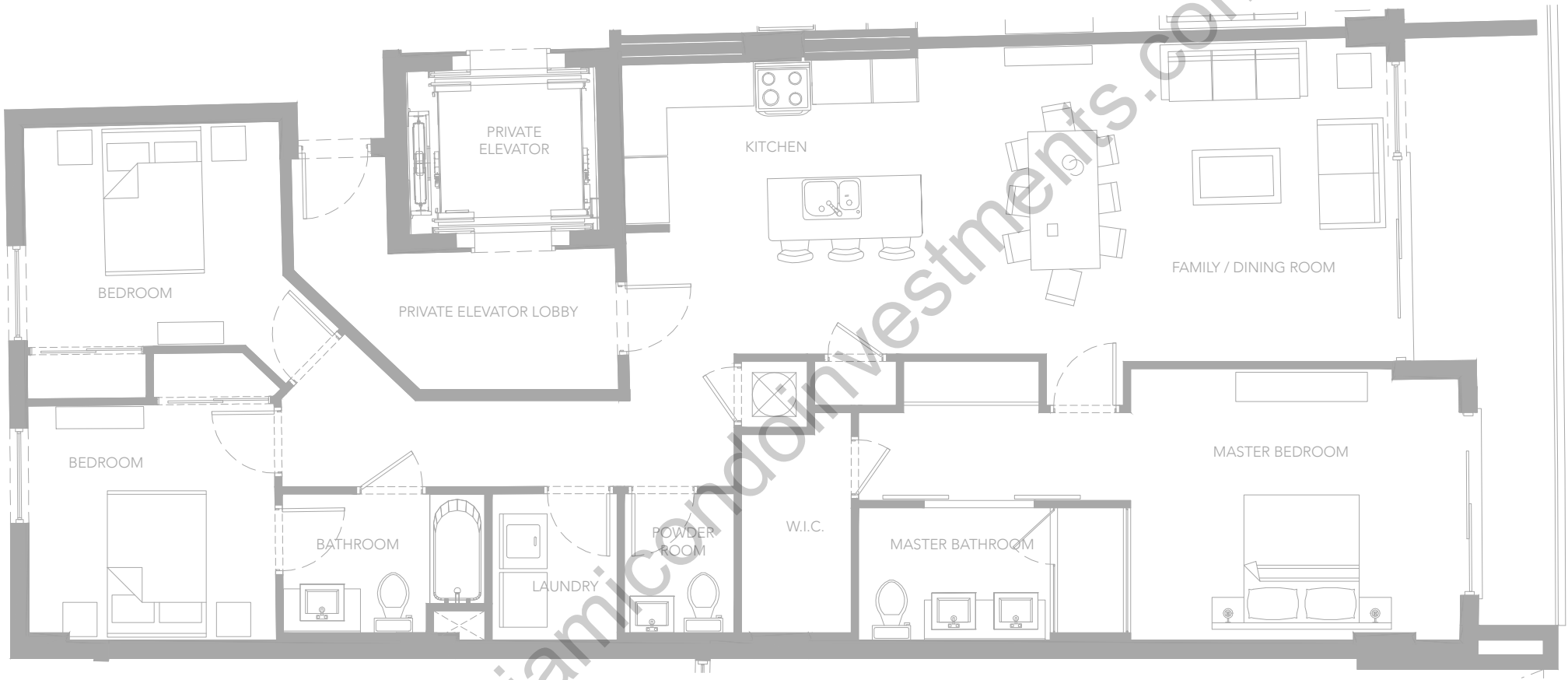
3.5

Bathroom

INT. AREA 1,807 ft<sup>2</sup> / 167.87 m<sup>2</sup> EXT. AREA 156 ft<sup>2</sup> / 14.50 m<sup>2</sup>



The sketches, renderings, graphic materials, plans, specifications, terms, conditions and statements contained in this brochure are proposed only, and the Developer reserves the right to modify, revise or withdraw any or all of same in its sole discretion and without prior notice. All improvements, designs and construction are subject to first obtaining the appropriate federal, state and local permits and approvals for same. The photographs contained in this brochure may be stock photography and are used to depict the spirit of the lifestyles to be achieved rather than any that may exist or that may be proposed and are merely intended as illustrations of the activities and concepts depicted therein. The features, plans and specifications described above are proposed only, and the Developer reserves the right to modify, revise or withdraw any or all of same in its sole discretion and without prior notice. Without limiting the generality of the foregoing, Developer reserves the right to substitute any of the foregoing with items of similar or better value, in Developer's opinion.



UNIT  
**D**

**3**

Bedroom

**2.5**

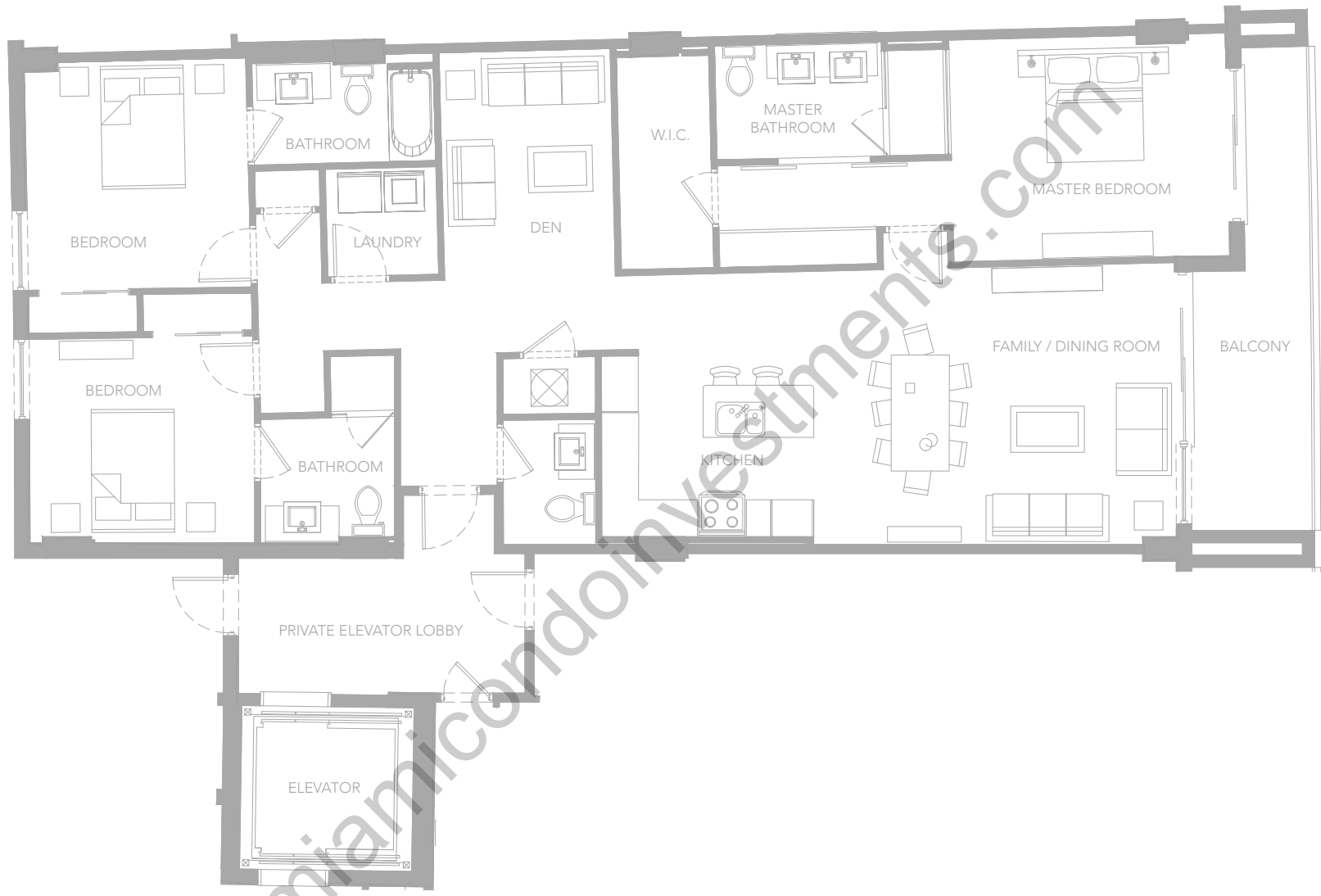
Bathroom

INT. AREA 1,701 ft<sup>2</sup> / 158 m<sup>2</sup>

EXT. AREA 156 ft<sup>2</sup> / 14.50 m<sup>2</sup>



The sketches, renderings, graphic materials, plans, specifications, terms, conditions and statements contained in this brochure are proposed only, and the Developer reserves the right to modify, revise or withdraw any or all of same in its sole discretion and without prior notice. All improvements, designs and construction are subject to first obtaining the appropriate federal, state and local permits and approvals for same. The photographs contained in this brochure may be stock photography and are used to depict the spirit of the lifestyles to be achieved rather than any that may exist or that may be proposed and are merely intended as illustrations of the activities and concepts depicted therein. The features, plans and specifications described above are proposed only, and the Developer reserves the right to modify, revise or withdraw any or all of same in its sole discretion and without prior notice. Without limiting the generality of the foregoing, Developer reserves the right to substitute any of the foregoing with items of similar or better value, in Developer's opinion.



UNIT  
**E**

**3**

Bedroom

**3.5**

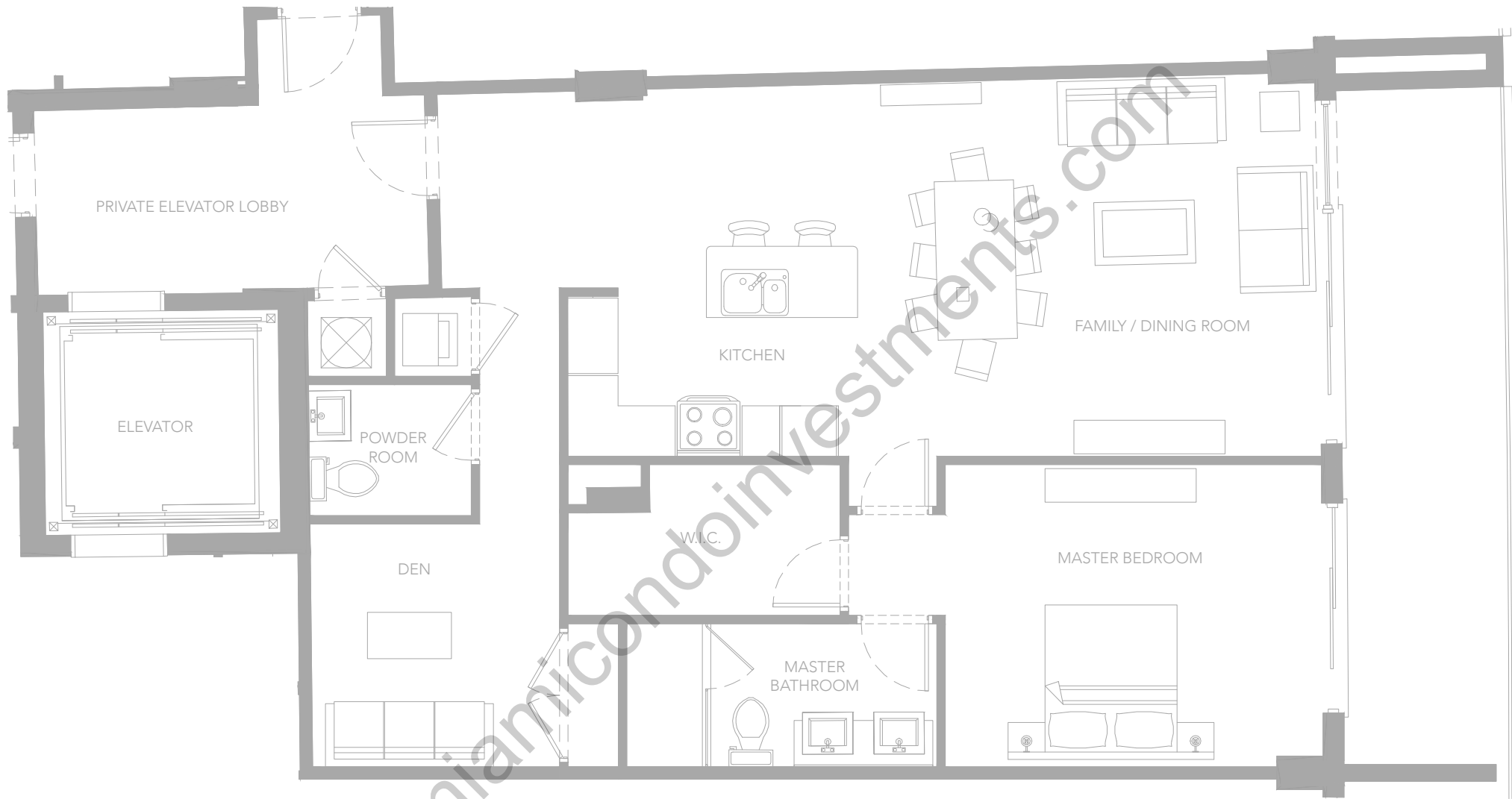
Bathroom

INT. AREA 1,781 ft<sup>2</sup> / 165.46 m<sup>2</sup>

EXT. AREA 156 ft<sup>2</sup> / 14.50 m<sup>2</sup>



The sketches, renderings, graphic materials, plans, specifications, terms, conditions and statements contained in this brochure are proposed only, and the Developer reserves the right to modify, revise or withdraw any or all of same in its sole discretion and without prior notice. All improvements, designs and construction are subject to first obtaining the appropriate federal, state and local permits and approvals for same. The photographs contained in this brochure may be stock photography and are used to depict the spirit of the lifestyles to be achieved rather than any that may exist or that may be proposed and are merely intended as illustrations of the activities and concepts depicted therein. The features, plans and specifications described above are proposed only, and the Developer reserves the right to modify, revise or withdraw any or all of same in its sole discretion and without prior notice. Without limiting the generality of the foregoing, Developer reserves the right to substitute any of the foregoing with items of similar or better value, in Developer's opinion.



UNIT  
**F**

**1**

Bedroom

**1.5**

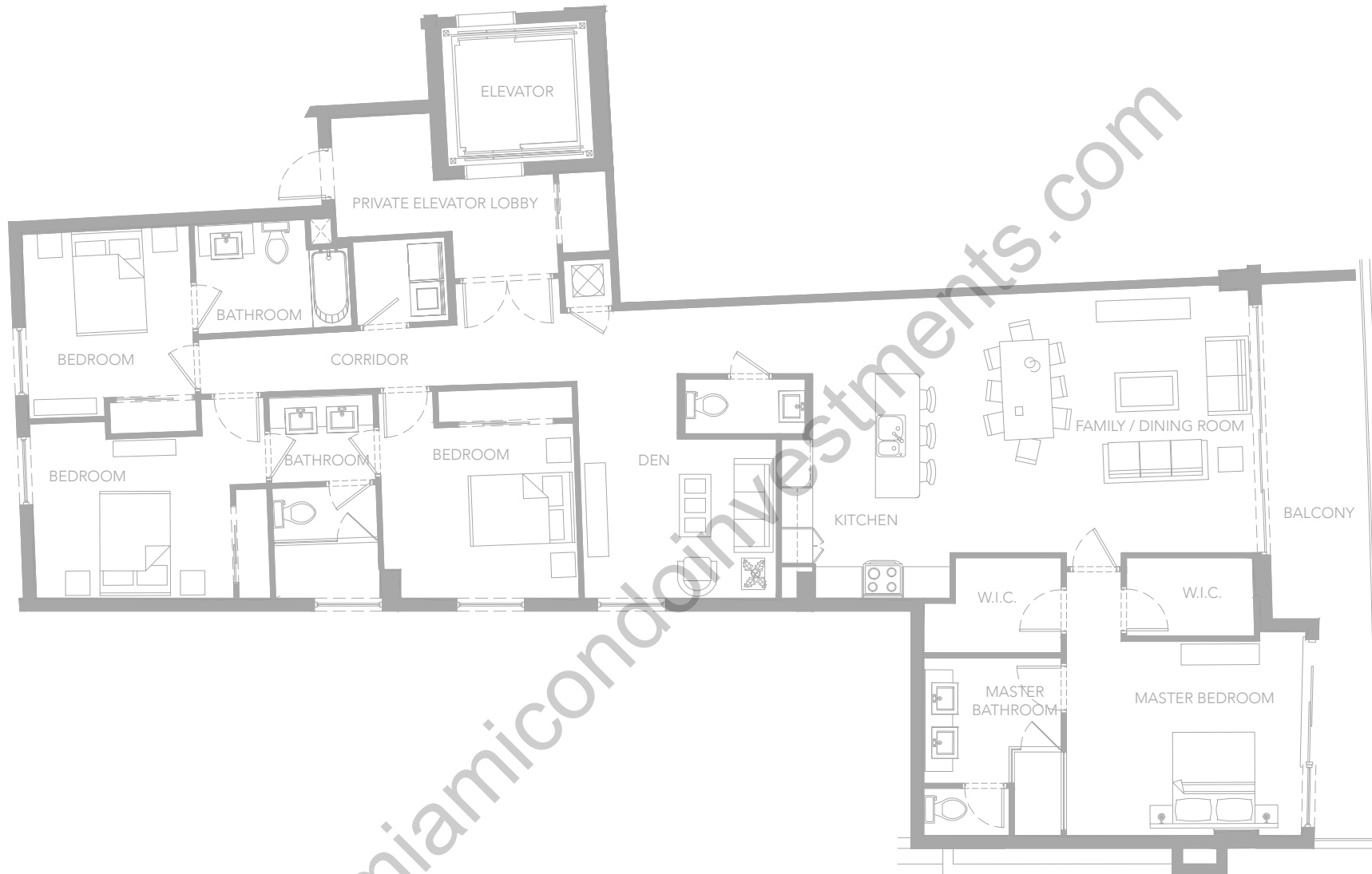
Bathroom

INT. AREA 1,106 ft<sup>2</sup> / 102.75 m<sup>2</sup>

EXT. AREA 196 ft<sup>2</sup> / 18.20 m<sup>2</sup>



The sketches, renderings, graphic materials, plans, specifications, terms, conditions and statements contained in this brochure are proposed only, and the Developer reserves the right to modify, revise or withdraw any or all of same in its sole discretion and without prior notice. All improvements, designs and construction are subject to first obtaining the appropriate federal, state and local permits and approvals for same. The photographs contained in this brochure may be stock photography and are used to depict the spirit of the lifestyles to be achieved rather than any that may exist or that may be proposed and are merely intended as illustrations of the activities and concepts depicted therein. The features, plans and specifications described above are proposed only, and the Developer reserves the right to modify, revise or withdraw any or all of same in its sole discretion and without prior notice. Without limiting the generality of the foregoing, Developer reserves the right to substitute any of the foregoing with items of similar or better value, in Developer's opinion.



UNIT  
**G**

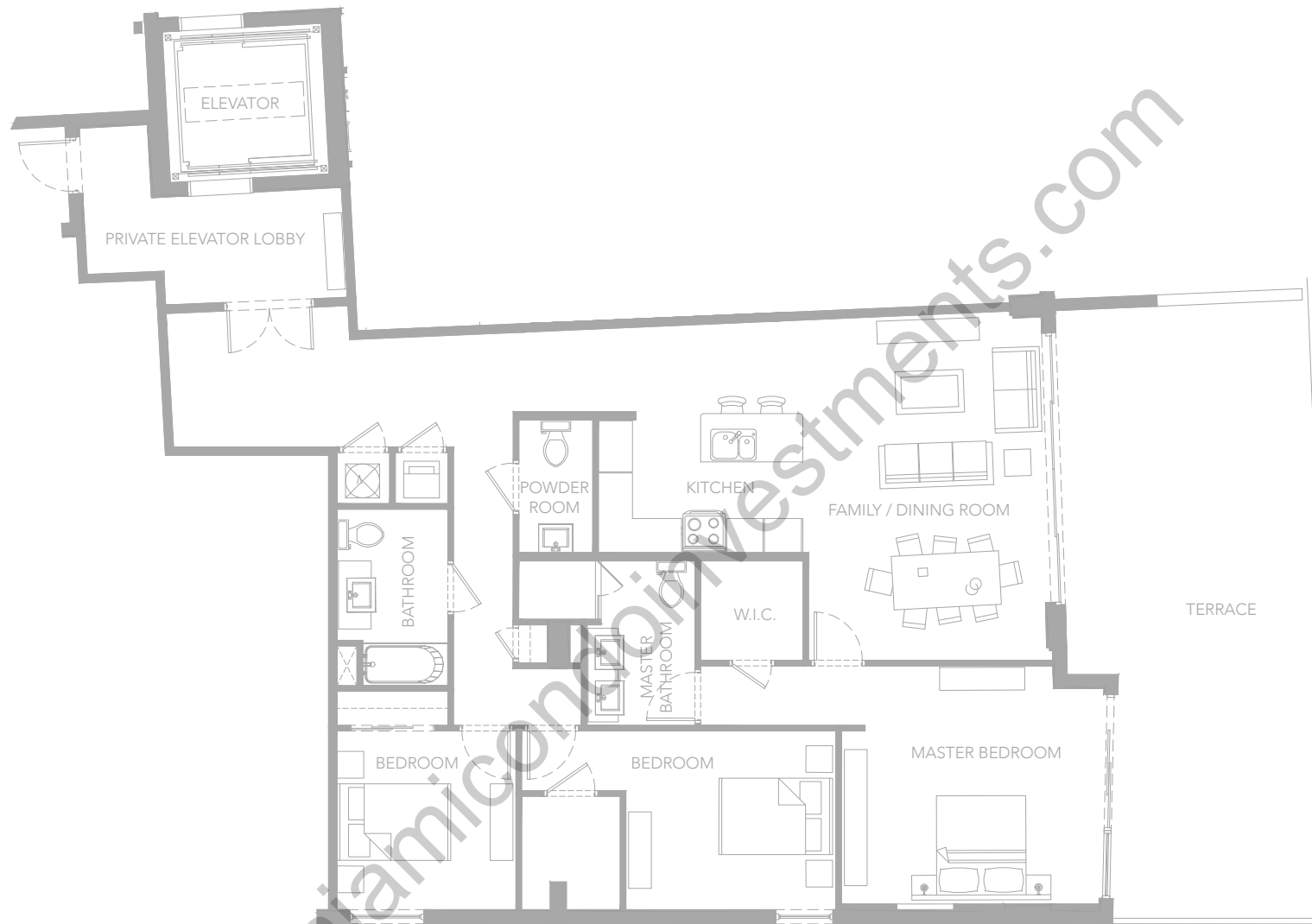
**4** Bedroom

**3.5** Bathroom

INT. AREA 2,296 ft<sup>2</sup> / 213.30 m<sup>2</sup>    EXT. AREA 213 ft<sup>2</sup> / 19.78 m<sup>2</sup>



The sketches, renderings, graphic materials, plans, specifications, terms, conditions and statements contained in this brochure are proposed only, and the Developer reserves the right to modify, revise or withdraw any or all of same in its sole discretion and without prior notice. All improvements, designs and construction are subject to first obtaining the appropriate federal, state and local permits and approvals for same. The photographs contained in this brochure may be stock photography and are used to depict the spirit of the lifestyles to be achieved rather than any that may exist or that may be proposed and are merely intended as illustrations of the activities and concepts depicted therein. The features, plans and specifications described above are proposed only, and the Developer reserves the right to modify, revise or withdraw any or all of same in its sole discretion and without prior notice. Without limiting the generality of the foregoing, Developer reserves the right to substitute any of the foregoing with items of similar or better value, in Developer's opinion.



  
**sereno**  
 BAY HARBOR ISLANDS

UNIT  
**H**



Bedroom



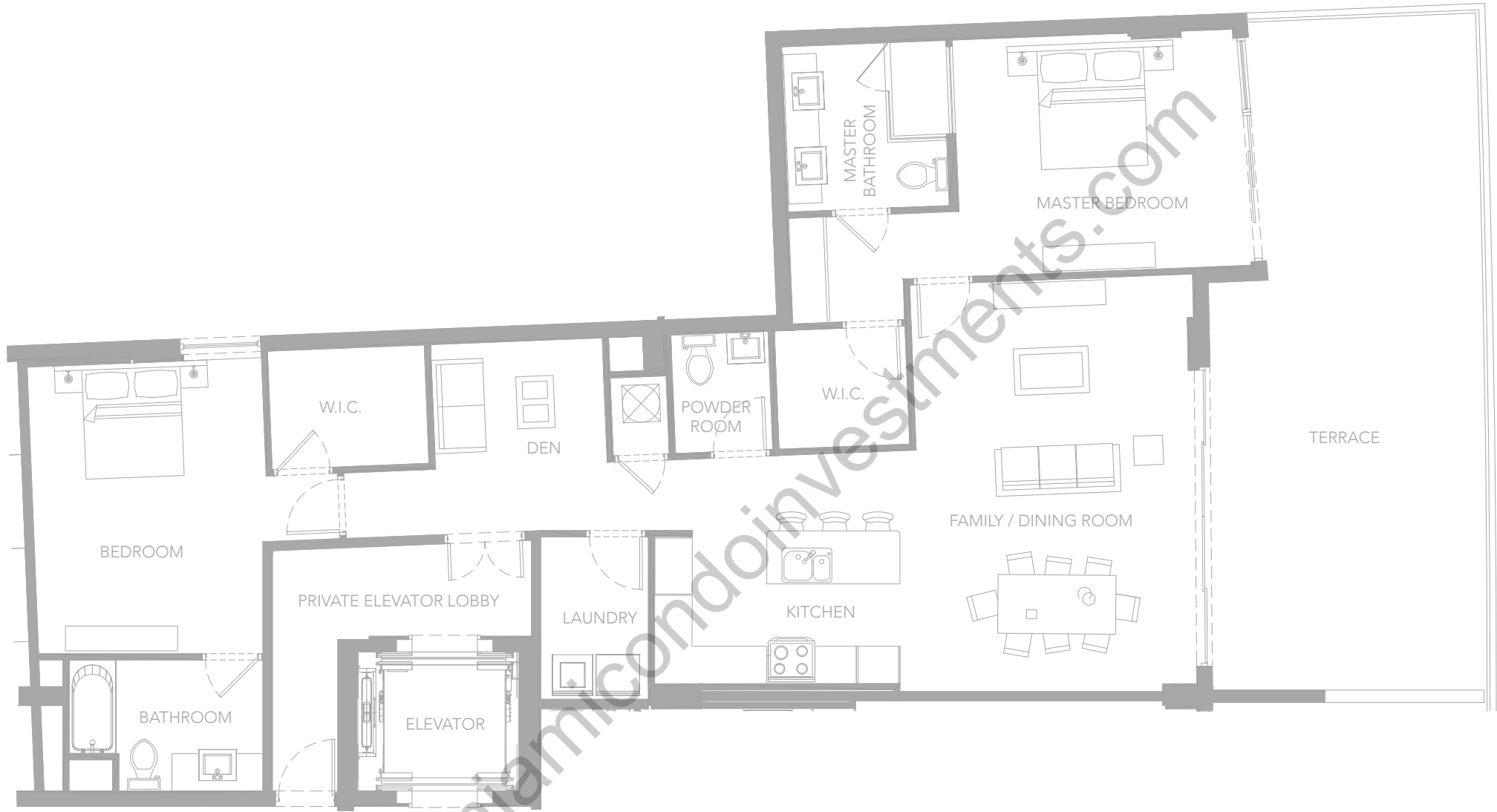
Bathroom

INT. AREA 1,784 ft<sup>2</sup> / 165.73 m<sup>2</sup>

EXT. AREA 516 ft<sup>2</sup> / 47.93 m<sup>2</sup>



The sketches, renderings, graphic materials, plans, specifications, terms, conditions and statements contained in this brochure are proposed only, and the Developer reserves the right to modify, revise or withdraw any or all of same in its sole discretion and without prior notice. All improvements, designs and construction are subject to first obtaining the appropriate federal, state and local permits and approvals for same. The photographs contained in this brochure may be stock photography and are used to depict the spirit of the lifestyles to be achieved rather than any that may exist or that may be proposed and are merely intended as illustrations of the activities and concepts depicted therein. The features, plans and specifications described above are proposed only, and the Developer reserves the right to modify, revise or withdraw any or all of same in its sole discretion and without prior notice. Without limiting the generality of the foregoing, Developer reserves the right to substitute any of the foregoing with items of similar or better value, in Developer's opinion.



sereno  
BAY HARBOR ISLANDS

UNIT



Bedroom



Bathroom

INT. AREA 1,746 ft<sup>2</sup> / 162 m<sup>2</sup>

EXT. AREA 516 ft<sup>2</sup> / 47.93 m<sup>2</sup>



The sketches, renderings, graphic materials, plans, specifications, terms, conditions and statements contained in this brochure are proposed only, and the Developer reserves the right to modify, revise or withdraw any or all of same in its sole discretion and without prior notice. All improvements, designs and construction are subject to first obtaining the appropriate federal, state and local permits and approvals for same. The photographs contained in this brochure may be stock photography and are used to depict the spirit of the lifestyles to be achieved rather than any that may exist or that may be proposed and are merely intended as illustrations of the activities and concepts depicted therein. The features, plans and specifications described above are proposed only, and the Developer reserves the right to modify, revise or withdraw any or all of same in its sole discretion and without prior notice. Without limiting the generality of the foregoing, Developer reserves the right to substitute any of the foregoing with items of similar or better value, in Developer's opinion.