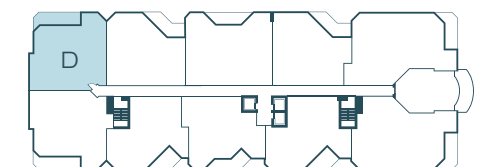


UNIT D

2	BEDROOMS + DEN	2.5	BATHROOMS
INTERIOR	2,114 SF	196 M ²	
TERRACE	241 SF	22 M ²	
<hr/>			
TOTAL	2,355 SF	218 M ²	

17301 BISCAYNE BOULEVARD, NORTH MIAMI BEACH, FL 33162

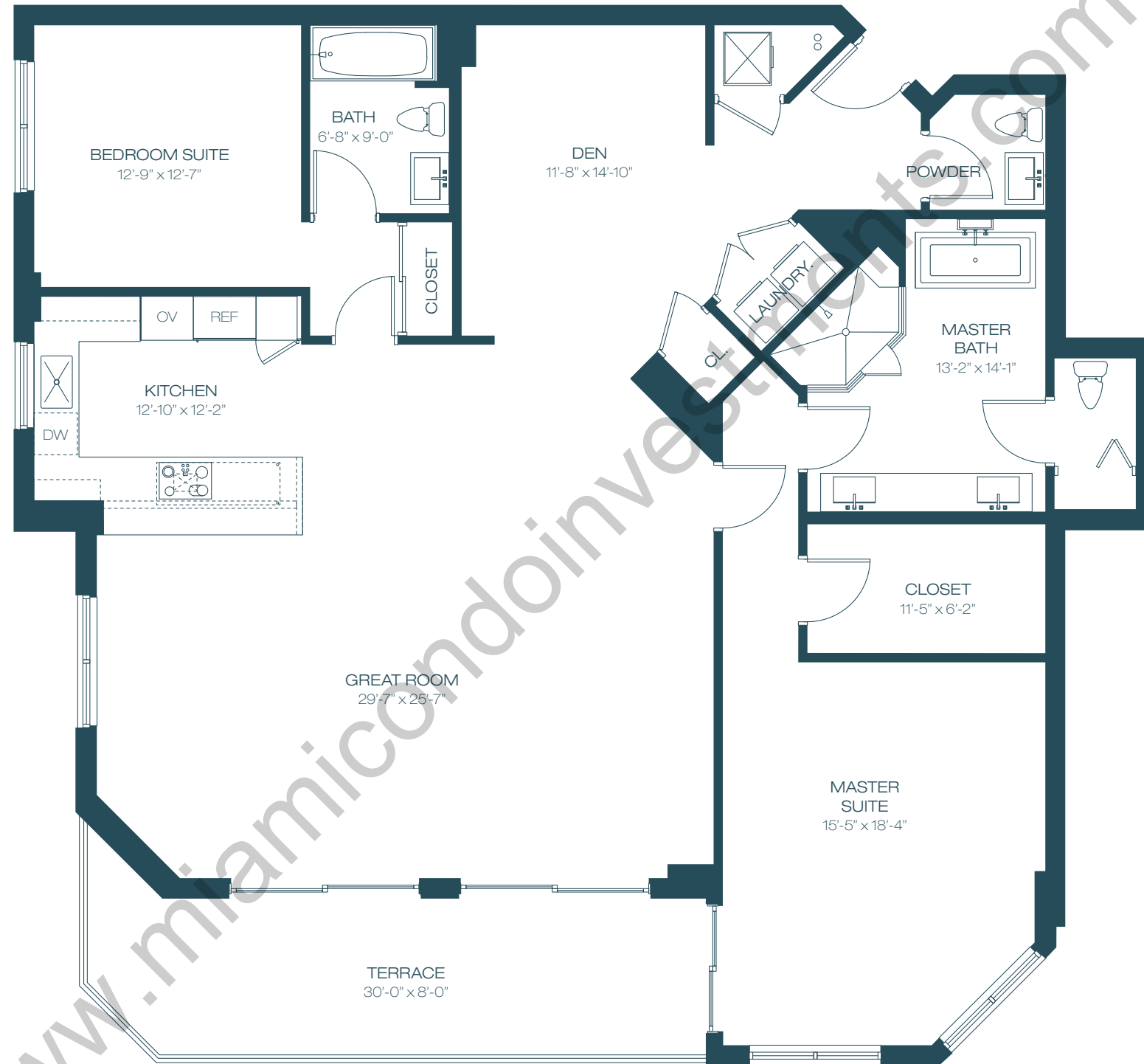


N
KEY PLAN - UNIT LOCATION

INTRACOASTAL

INTRACOASTAL

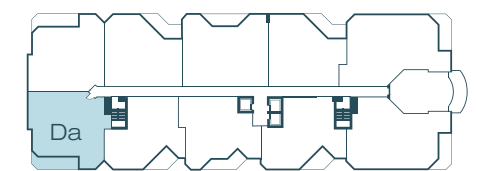
All dimensions are approximate and all floor plans and development plans are subject to change. This floor plan represents the typical floor plan for the residence type indicated and is provided for informational purposes only. The actual floor plan of the residence may differ. All features listed for the residences are representative only, and the Developer reserves the right, without notice to or approval by the Buyer, to make changes or substitutions of equal or better quality for any features, materials and equipment. All dimensions are taken to the outside finished surface of the exterior walls, and to the centerline of interior demising walls, and vary from the dimensions that would be determined based upon the description of the "Unit" set forth in the Declaration of Condominium (which generally includes only the interior airspace between the unfinished interior surfaces of the walls bounding the unit). All sketches, renderings, graphic materials, plans, specifications, terms, conditions, and statements contained in this brochure are proposed and conceptual only and do not necessarily reflect the final plans and specifications for the development. Further, developer reserves the right to modify, revise, or withdraw any or all of sale in its sole discretion and without prior notice.



UNIT Da

2	BEDROOMS + DEN	2.5	BATHROOMS
INTERIOR	2,156 SF	200 M ²	
TERRACE	241 SF	22 M ²	
<hr/>			
TOTAL	2,397 SF	223 M ²	

17301 BISCAYNE BOULEVARD, NORTH MIAMI BEACH, FL 33162

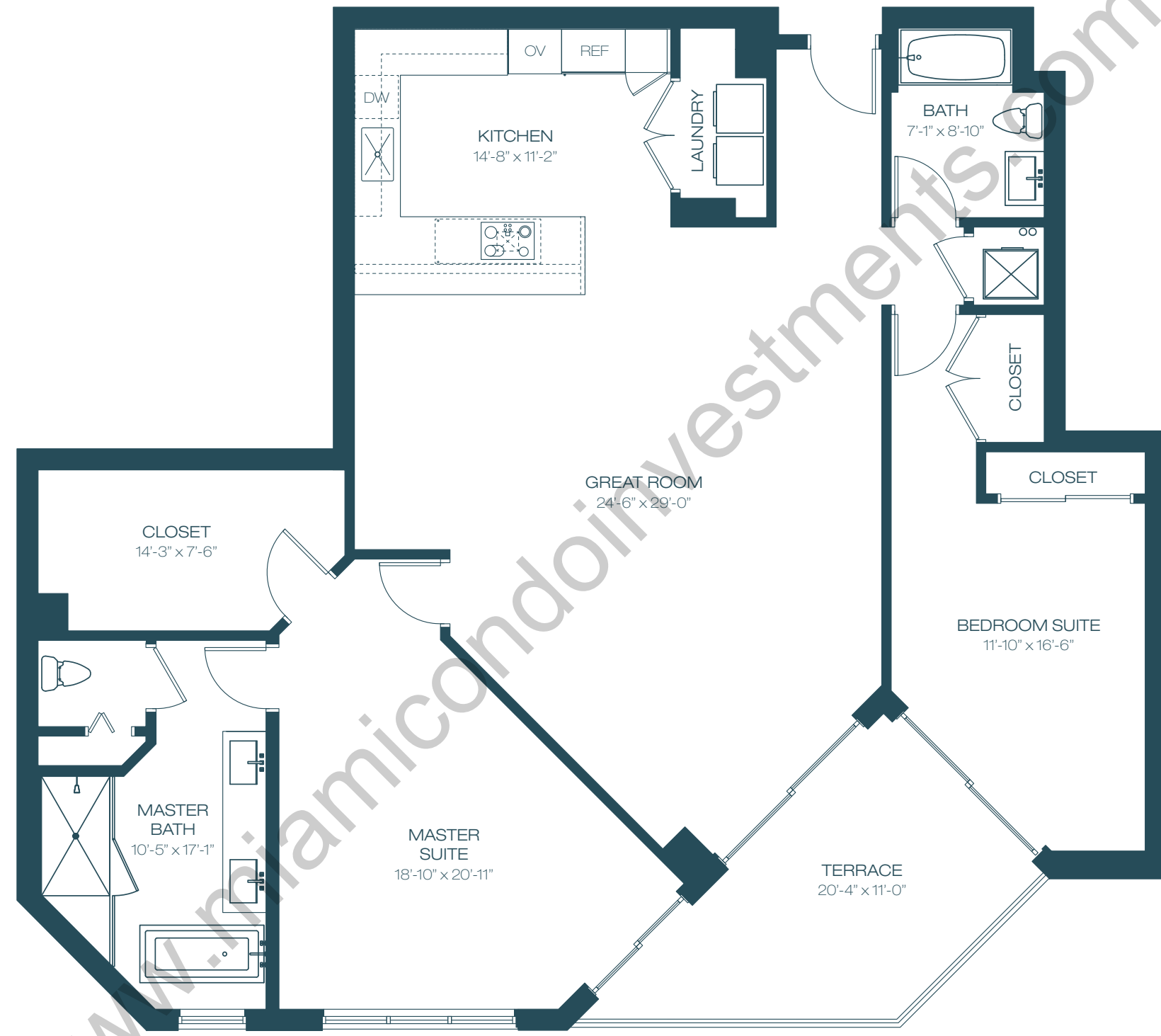


N
KEY PLAN - UNIT LOCATION

INTRACOASTAL

INTRACOASTAL

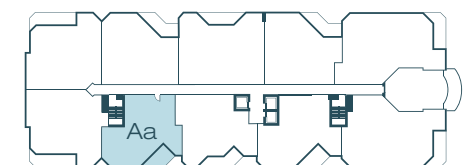
All dimensions are approximate and all floor plans and development plans are subject to change. This floor plan represents the typical floor plan for the residence type indicated and is provided for informational purposes only. The actual floor plan of the residence may differ. All features listed for the residences are representative only, and the Developer reserves the right, without notice to or approval by the Buyer, to make changes or substitutions of equal or better quality for any features, materials and equipment. All dimensions are taken to the outside finished surface of the exterior walls, and to the centerline of interior demising walls, and vary from the dimensions that would be determined based upon the description of the "Unit" set forth in the Declaration of Condominium (which generally includes only the interior airspace between the unfinished interior surfaces of the walls bounding the unit). All sketches, renderings, graphic materials, plans, specifications, terms, conditions, and statements contained in this brochure are proposed and conceptual only and do not necessarily reflect the final plans and specifications for the development. Further, developer reserves the right to modify, revise, or withdraw any or all of sale in its sole discretion and without prior notice.



UNIT Aa

2	BEDROOMS	2	BATHROOMS
INTERIOR	1,821 SF	169M ²	
TERRACE	169 SF	16 M ²	
TOTAL		1,990 SF	185 M ²

17301 BISCAYNE BOULEVARD, NORTH MIAMI BEACH, FL 33162

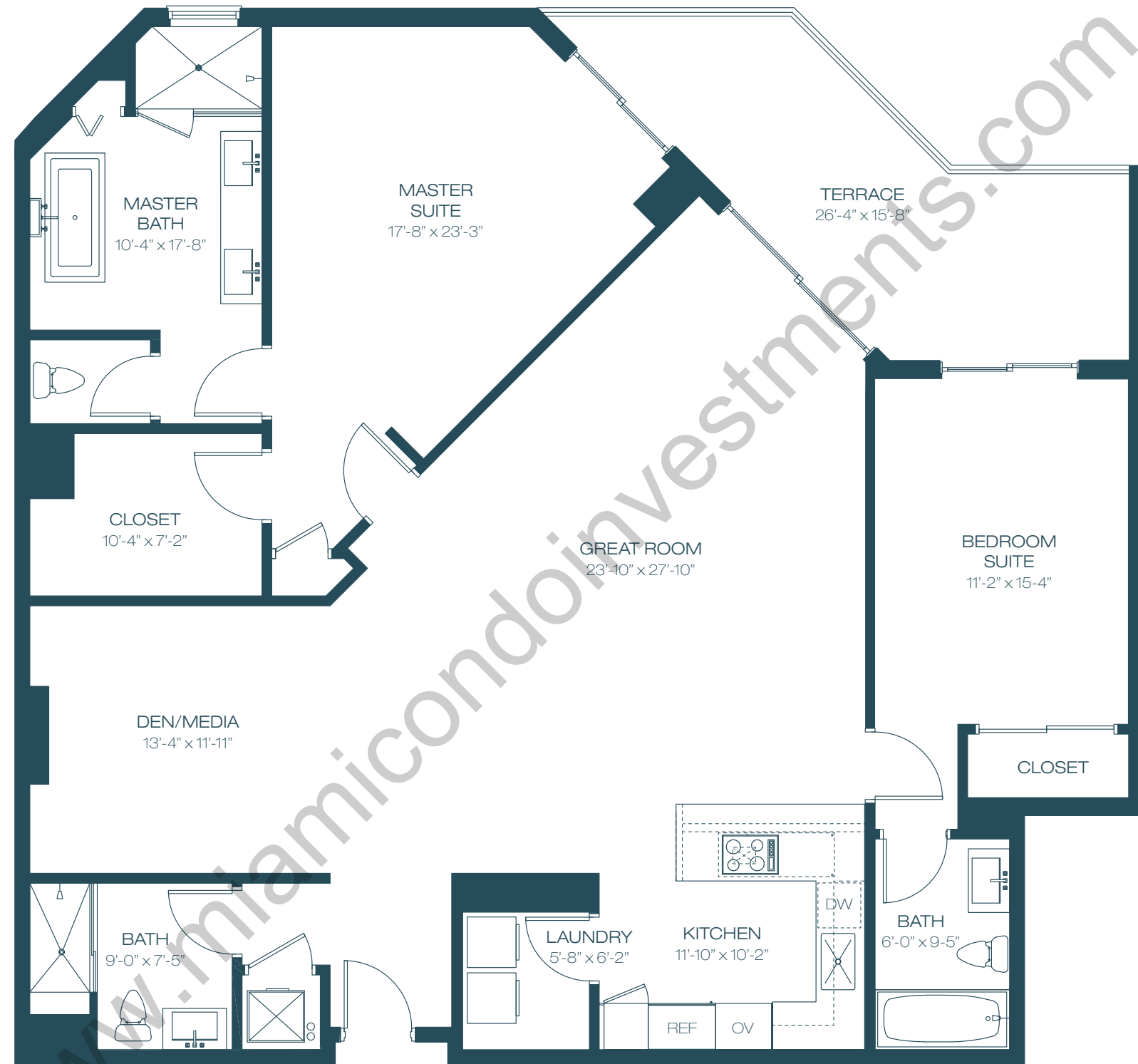


N
KEY PLAN - UNIT LOCATION

INTRACOASTAL

INTRACOASTAL

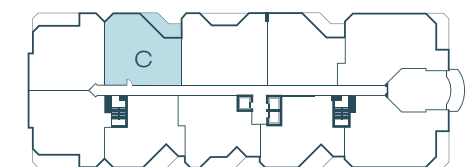
All dimensions are approximate and all floor plans and development plans are subject to change. This floor plan represents the typical floor plan for the residence type indicated and is provided for informational purposes only. The actual floor plan of the residence may differ. All features listed for the residences are representative only, and the Developer reserves the right, without notice to or approval by the Buyer, to make changes or substitutions of equal or better quality for any features, materials and equipment. All dimensions are taken to the outside finished surface of the exterior walls, and to the centerline of interior demising walls, and vary from the dimensions that would be determined based upon the description of the "Unit" set forth in the Declaration of Condominium (which generally includes only the interior airspace between the unfinished interior surfaces of the walls bounding the unit). All sketches, renderings, graphic materials, plans, specifications, terms, conditions, and statements contained in this brochure are proposed and conceptual only and do not necessarily reflect the final plans and specifications for the development. Further, developer reserves the right to modify, revise, or withdraw any or all of sale in its sole discretion and without prior notice.



UNIT C

2	BEDROOMS + DEN	3	BATHROOMS
INTERIOR	1,961 SF	182 M ²	
TERRACE	210 SF	20 M ²	
<hr/>			
TOTAL	2,171 SF	202 M ²	

17301 BISCAYNE BOULEVARD, NORTH MIAMI BEACH, FL 33162

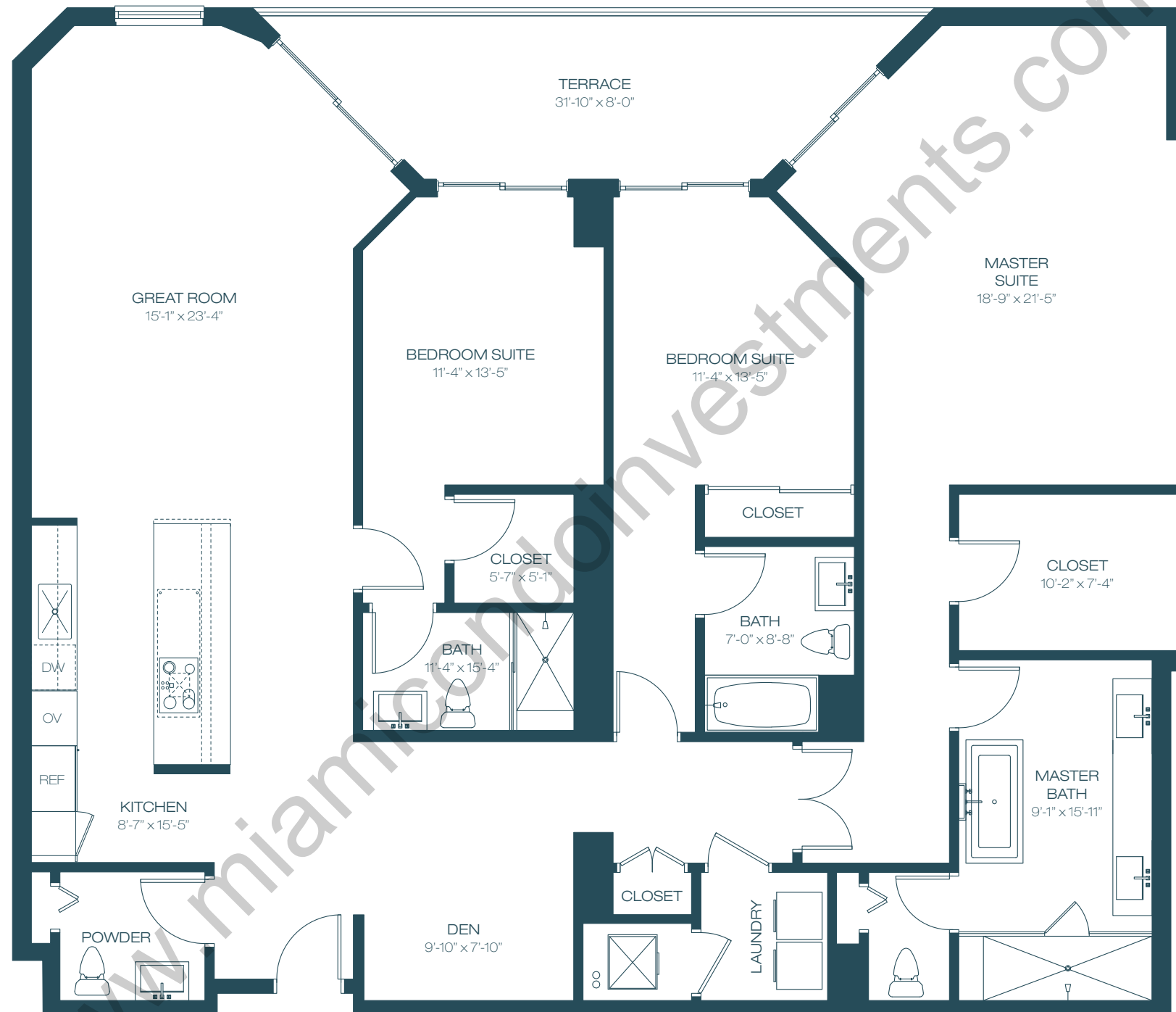


MARINA
N
KEY PLAN - UNIT LOCATION

INTRACOASTAL

INTRACOASTAL

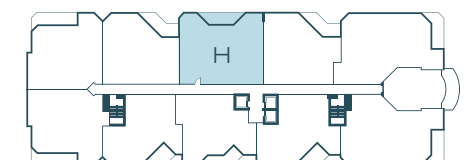
All dimensions are approximate and all floor plans and development plans are subject to change. This floor plan represents the typical floor plan for the residence type indicated and is provided for informational purposes only. The actual floor plan of the residence may differ. All features listed for the residences are representative only, and the Developer reserves the right, without notice to or approval by the Buyer, to make changes or substitutions of equal or better quality for any features, materials and equipment. All dimensions are taken to the outside finished surface of the exterior walls, and to the centerline of interior demising walls, and vary from the dimensions that would be determined based upon the description of the "Unit" set forth in the Declaration of Condominium (which generally includes only the interior airspace between the unfinished interior surfaces of the walls bounding the unit). All sketches, renderings, graphic materials, plans, specifications, terms, conditions, and statements contained in this brochure are proposed and conceptual only and do not necessarily reflect the final plans and specifications for the development. Further, developer reserves the right to modify, revise, or withdraw any or all of sale in its sole discretion and without prior notice.



UNIT H

3	BEDROOMS + DEN	3.5	BATHROOMS
INTERIOR	2,332 SF		217 M ²
TERRACE	190 SF		18 M ²
<hr/>			
TOTAL	2,522 SF		234 M ²

17301 BISCAYNE BOULEVARD, NORTH MIAMI BEACH, FL 33162

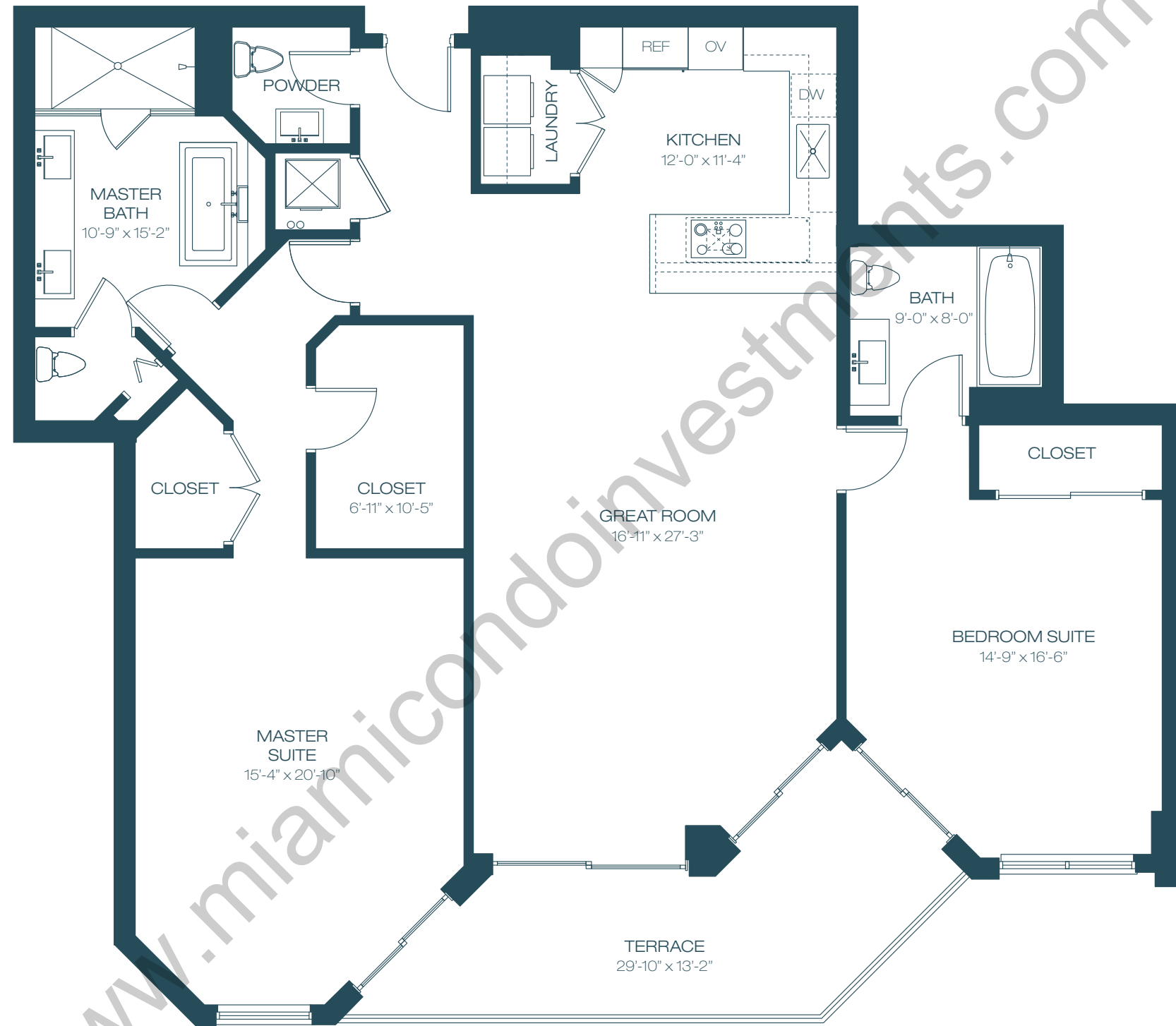


N
KEY PLAN - UNIT LOCATION

INTRACOASTAL

INTRACOASTAL

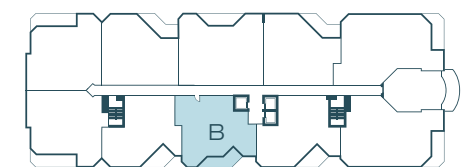
All dimensions are approximate and all floor plans and development plans are subject to change. This floor plan represents the typical floor plan for the residence type indicated and is provided for informational purposes only. The actual floor plan of the residence may differ. All features listed for the residences are representative only, and the Developer reserves the right, without notice to or approval by the Buyer, to make changes or substitutions of equal or better quality for any features, materials and equipment. All dimensions are taken to the outside finished surface of the exterior walls, and to the centerline of interior demising walls, and vary from the dimensions that would be determined based upon the description of the "Unit" set forth in the Declaration of Condominium (which generally includes only the interior airspace between the unfinished interior surfaces of the walls bounding the unit). All sketches, renderings, graphic materials, plans, specifications, terms, conditions, and statements contained in this brochure are proposed and conceptual only and do not necessarily reflect the final plans and specifications for the development. Further, developer reserves the right to modify, revise, or withdraw any or all of sale in its sole discretion and without prior notice.



UNIT B

2	BEDROOMS	2.5	BATHROOMS
INTERIOR	1,873 SF	174 M ²	
TERRACE	198 SF	18 M ²	
<hr/>			
TOTAL	2,071 SF	192 M ²	

17301 BISCAYNE BOULEVARD, NORTH MIAMI BEACH, FL 33162

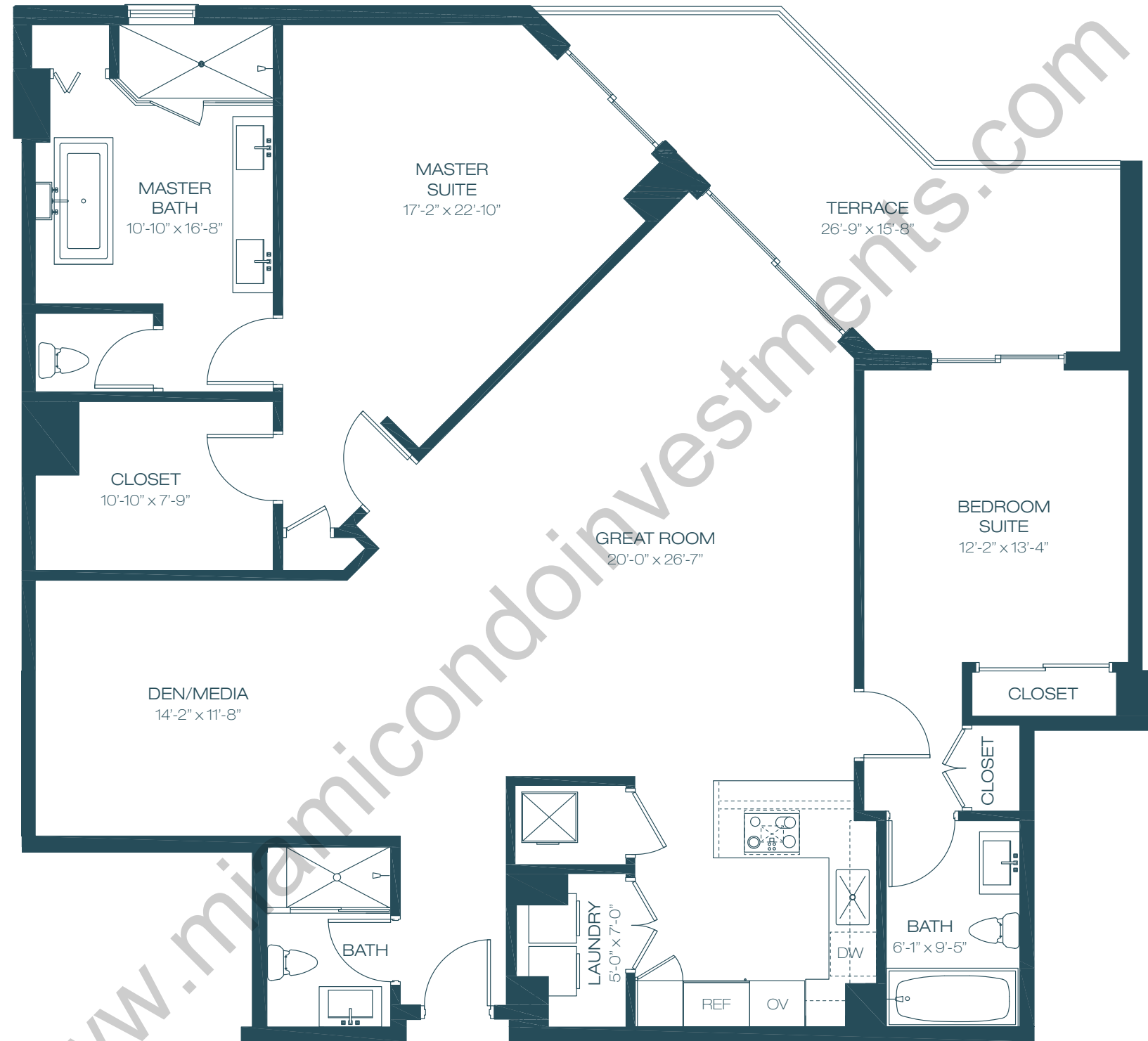


N
KEY PLAN - UNIT LOCATION

INTRACOASTAL

INTRACOASTAL

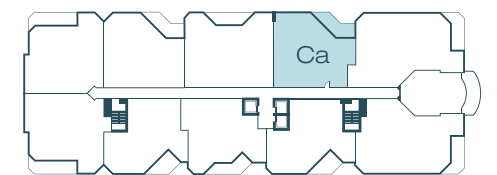
All dimensions are approximate and all floor plans and development plans are subject to change. This floor plan represents the typical floor plan for the residence type indicated and is provided for informational purposes only. The actual floor plan of the residence may differ. All features listed for the residences are representative only, and the Developer reserves the right, without notice to or approval by the Buyer, to make changes or substitutions of equal or better quality for any features, materials and equipment. All dimensions are taken to the outside finished surface of the exterior walls, and to the centerline of interior demising walls, and vary from the dimensions that would be determined based upon the description of the "Unit" set forth in the Declaration of Condominium (which generally includes only the interior airspace between the unfinished interior surfaces of the walls bounding the unit). All sketches, renderings, graphic materials, plans, specifications, terms, conditions, and statements contained in this brochure are proposed and conceptual only and do not necessarily reflect the final plans and specifications for the development. Further, developer reserves the right to modify, revise, or withdraw any or all of sale in its sole discretion and without prior notice.



UNIT Ca

2	BEDROOMS + DEN	3	BATHROOMS
INTERIOR	1,899 SF		176 M ²
TERRACE	214 SF		20 M ²
<hr/>			
TOTAL	2,113 SF		196 M ²

17301 BISCAYNE BOULEVARD, NORTH MIAMI BEACH, FL 33162

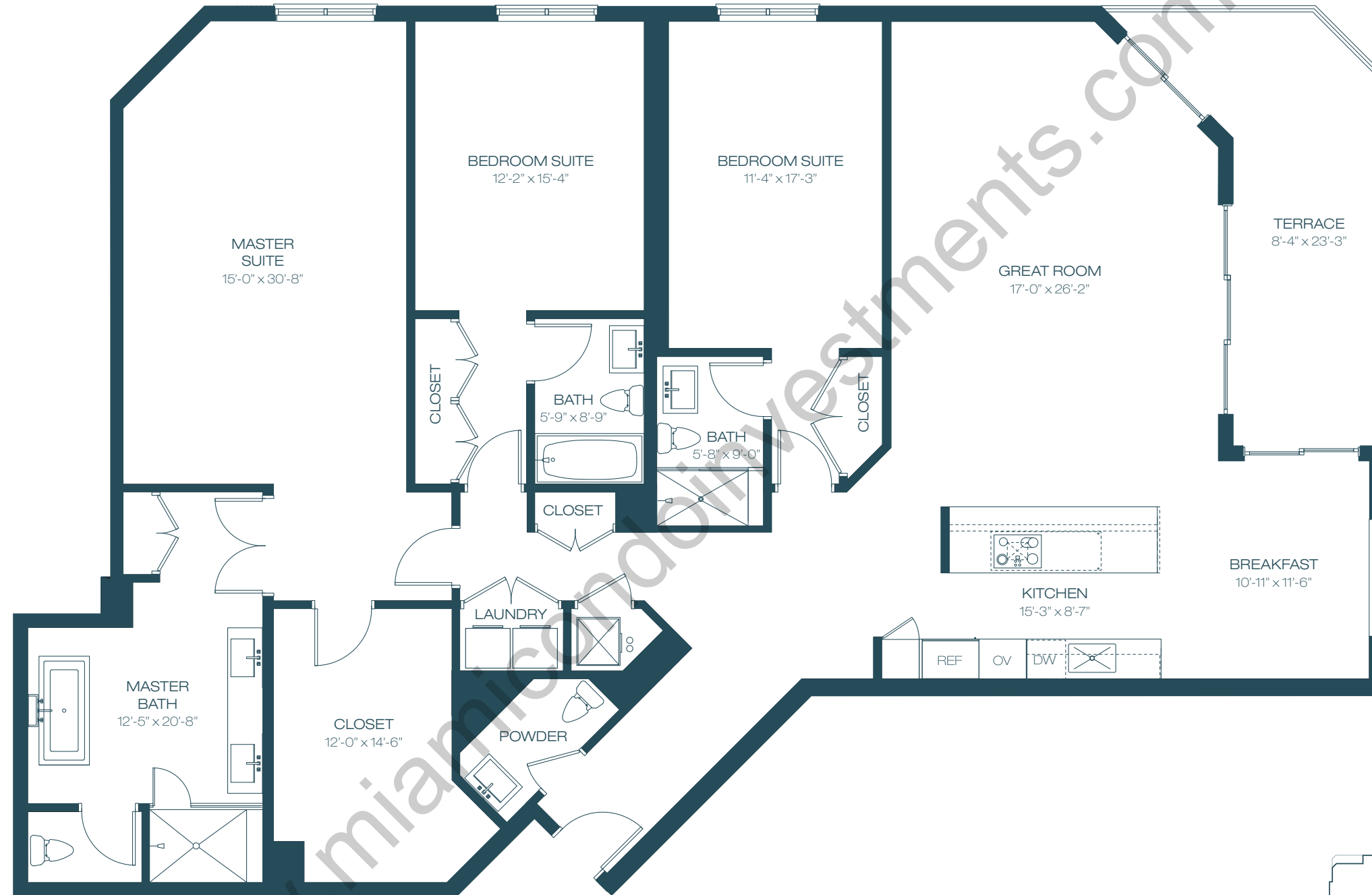


N
KEY PLAN - UNIT LOCATION

INTRACOASTAL

INTRACOASTAL

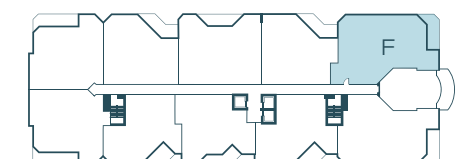
All dimensions are approximate and all floor plans and development plans are subject to change. This floor plan represents the typical floor plan for the residence type indicated and is provided for informational purposes only. The actual floor plan of the residence may differ. All features listed for the residences are representative only, and the Developer reserves the right, without notice to or approval by the Buyer, to make changes or substitutions of equal or better quality for any features, materials and equipment. All dimensions are taken to the outside finished surface of the exterior walls, and to the centerline of interior demising walls, and vary from the dimensions that would be determined based upon the description of the "Unit" set forth in the Declaration of Condominium (which generally includes only the interior airspace between the unfinished interior surfaces of the walls bounding the unit). All sketches, renderings, graphic materials, plans, specifications, terms, conditions, and statements contained in this brochure are proposed and conceptual only and do not necessarily reflect the final plans and specifications for the development. Further, developer reserves the right to modify, revise, or withdraw any or all of sale in its sole discretion and without prior notice.



UNIT F

3	BEDROOMS	3.5	BATHROOMS
INTERIOR		2,600 SF	242 M ²
TERRACE		203 SF	19 M ²

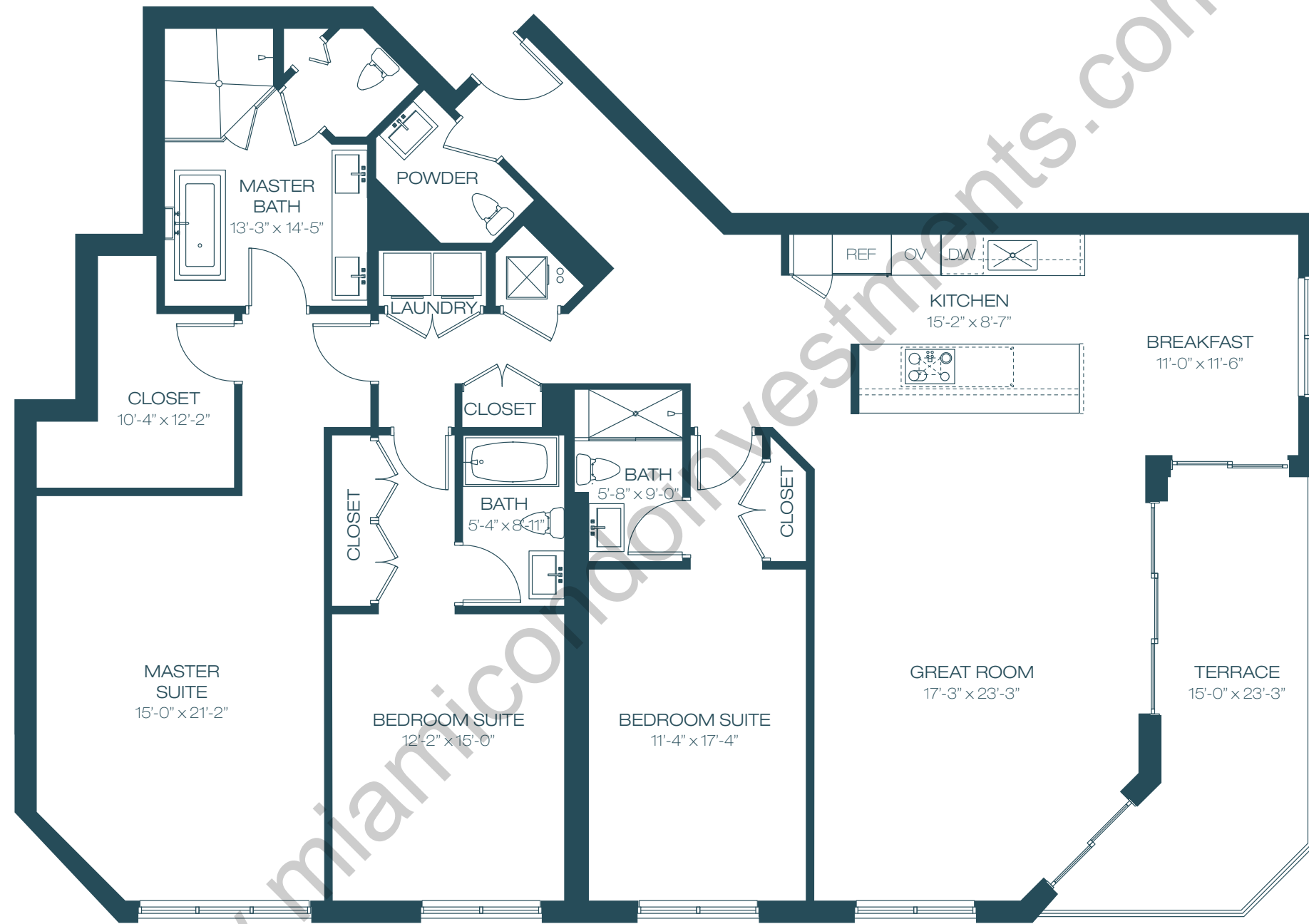
TOTAL		2,803 SF	261 M ²



N
KEY PLAN - UNIT LOCATION

17301 BISCAYNE BOULEVARD, NORTH MIAMI BEACH, FL 33162

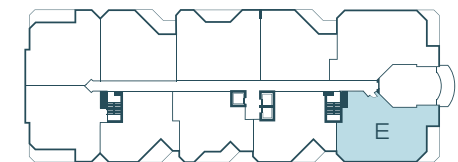
All dimensions are approximate and all floor plans and development plans are subject to change. This floor plan represents the typical floor plan for the residence type indicated and is provided for informational purposes only. The actual floor plan of the residence may differ. All features listed for the residences are representative only, and the Developer reserves the right, without notice to or approval by the Buyer, to make changes or substitutions of equal or better quality for any features, materials and equipment. All dimensions are taken to the outside finished surface of the exterior walls, and to the centerline of interior demising walls, and vary from the dimensions that would be determined based upon the description of the "Unit" set forth in the Declaration of Condominium (which generally includes only the interior airspace between the unfinished interior surfaces of the walls bounding the unit). All sketches, renderings, graphic materials, plans, specifications, terms, conditions, and statements contained in this brochure are proposed and conceptual only and do not necessarily reflect the final plans and specifications for the development. Further, developer reserves the right to modify, revise, or withdraw any or all of sale in its sole discretion and without prior notice.



UNIT E

3	BEDROOMS	3.5	BATHROOMS
INTERIOR		2,421 SF	225 M ²
TERRACE		203 SF	19 M ²

TOTAL		2,624 SF	244 M ²

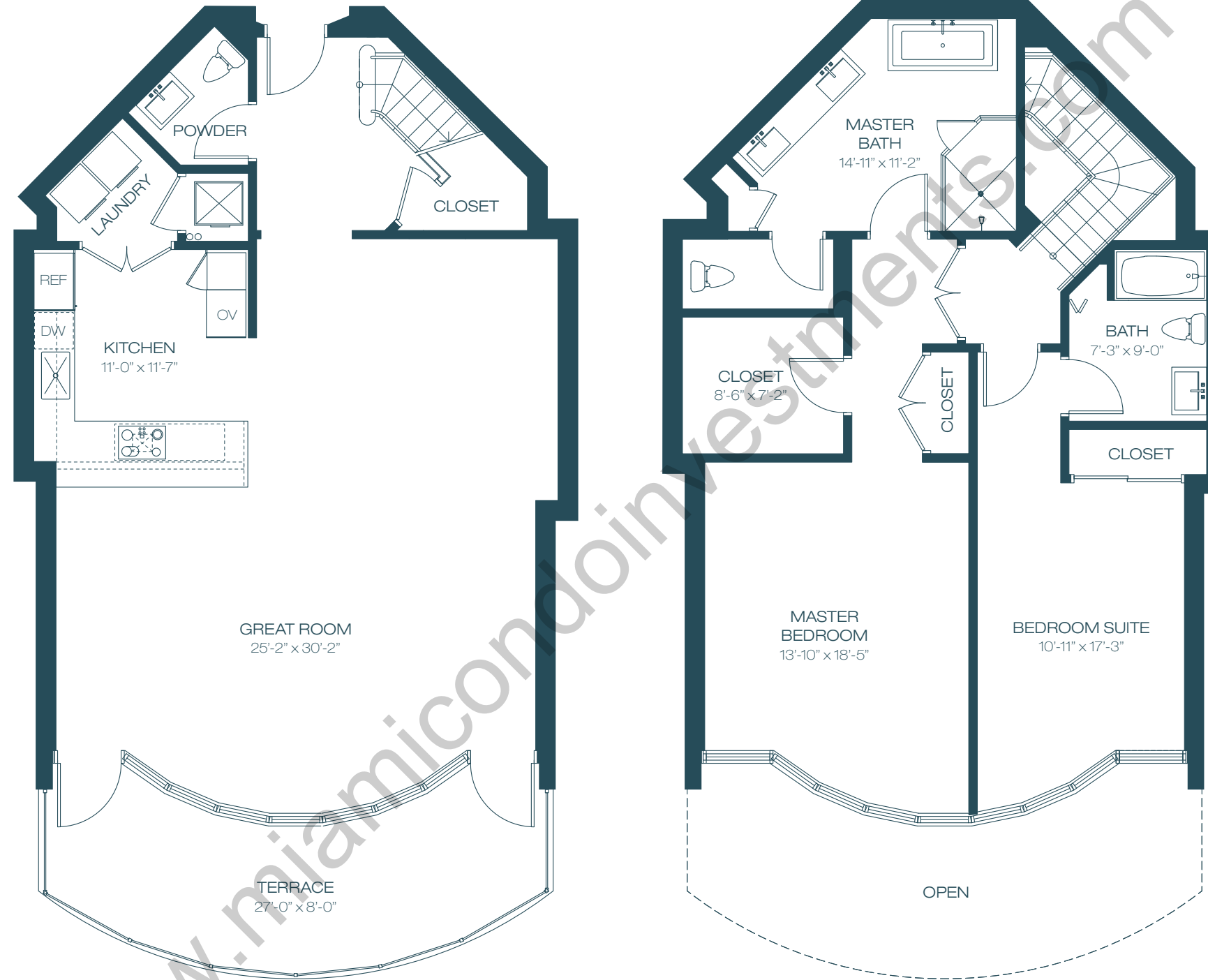


MARINA

KEY PLAN - UNIT LOCATION

17301 BISCAYNE BOULEVARD, NORTH MIAMI BEACH, FL 33162

All dimensions are approximate and all floor plans and development plans are subject to change. This floor plan represents the typical floor plan for the residence type indicated and is provided for informational purposes only. The actual floor plan of the residence may differ. All features listed for the residences are representative only, and the Developer reserves the right, without notice to or approval by the Buyer, to make changes or substitutions of equal or better quality for any features, materials and equipment. All dimensions are taken to the outside finished surface of the exterior walls, and to the centerline of interior demising walls, and vary from the dimensions that would be determined based upon the description of the "Unit" set forth in the Declaration of Condominium (which generally includes only the interior airspace between the unfinished interior surfaces of the walls bounding the unit). All sketches, renderings, graphic materials, plans, specifications, terms, conditions, and statements contained in this brochure are proposed and conceptual only and do not necessarily reflect the final plans and specifications for the development. Further, developer reserves the right to modify, revise, or withdraw any or all of sale in its sole discretion and without prior notice.

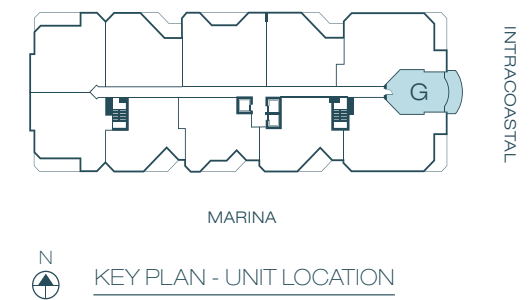


UNIT G

2	BEDROOMS	2.5	BATHROOMS
INTERIOR		2,080 SF	193 M ²
TERRACE		216 SF	20 M ²
TOTAL		2,296 SF	213 M ²

INTRACOASTAL

17301 BISCAYNE BOULEVARD, NORTH MIAMI BEACH, FL 33162



All dimensions are approximate and all floor plans and development plans are subject to change. This floor plan represents the typical floor plan for the residence type indicated and is provided for informational purposes only. The actual floor plan of the residence may differ. All features listed for the residences are representative only, and the Developer reserves the right, without notice to or approval by the Buyer, to make changes or substitutions of equal or better quality for any features, materials and equipment. All dimensions are taken to the outside finished surface of the exterior walls, and to the centerline of interior demising walls, and vary from the dimensions that would be determined based upon the description of the "Unit" set forth in the Declaration of Condominium (which generally includes only the interior airspace between the unfinished interior surfaces of the walls bounding the unit). All sketches, renderings, graphic materials, plans, specifications, terms, conditions, and statements contained in this brochure are proposed and conceptual only and do not necessarily reflect the final plans and specifications for the development. Further, developer reserves the right to modify, revise, or withdraw any or all of sale in its sole discretion and without prior notice.