



BEACHWALK

by pininfarina

LUXURY RESORT CONDOMINIUMS &
EXCLUSIVE BEACHCLUB

DESIGN MEETS THE BEACH

< 5 MIN TO HOLLYWOOD BEACH
10 MIN TO FT. LAUDERDALE BEACH

5 MIN TO AVENTURA MALL
10 MIN TO BAL HARBOUR & SUNNY ISLES



www.miamicondoinvestments.com



HOLLYWOOD

B
C
BEACHCLUB

HALLANDALE

B
W
BEACHWALK

AVENTURA

SUNNY ISLES

BAL HARBOUR

CUTTING-EDGE DESIGN BY THE OCEAN

Just as the ocean is constantly evolving, so too is the world of Beachwalk – 300 exquisite waterfront residences where cutting-edge design and artistry elevate waterfront living to a higher standard.

Ideally located along the shores of the Intracoastal Waterway on Hallandale Beach, this luxury real estate project provides a peaceful atmosphere, free from busy crowds. Beachwalk offers residences with members-only beach club services and is just minutes away from high-end shopping, great dining, top entertainment and cultural hotspots. For thrill seekers, there are nearby racetracks, casinos, fun-filled parks and more.

- The Village at Gulfstream Park
- Gulfstream Park Racing and Casino
- Diplomat Golf Resort and Spa
- Aventura Mall
- Port Everglades
- Bal Harbour Shops
- Hard Rock Resort & Casino
- Broward Center for the Arts
- Hollywood Broadwalk
- Turnberry Isle Golf and Spa
- SunLife Stadium
- Las Olas Boulevard
- Fort Lauderdale International Airport (FLL)
- Miami International Airport (MIA)

BREATHTAKING VIEWS FROM BEACHWALK

EAST VIEW



WEST VIEW

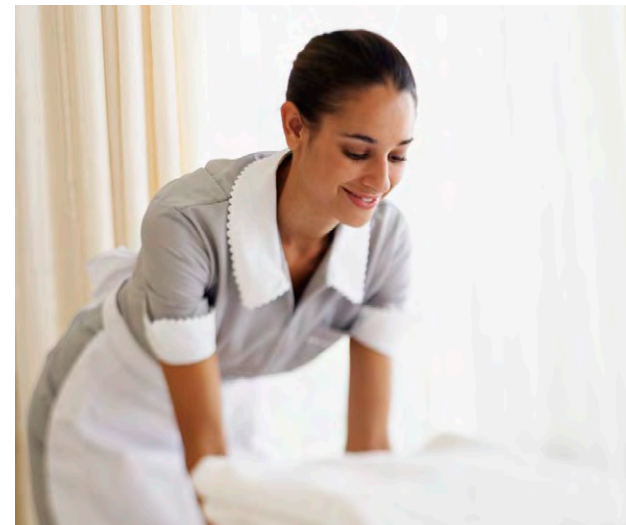
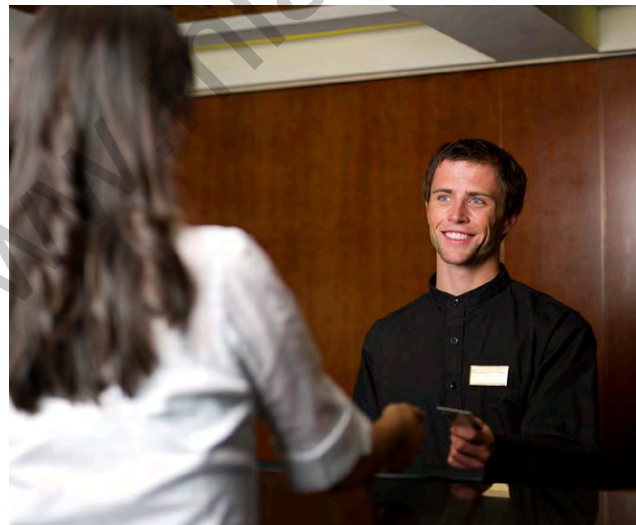


SOUTH VIEW

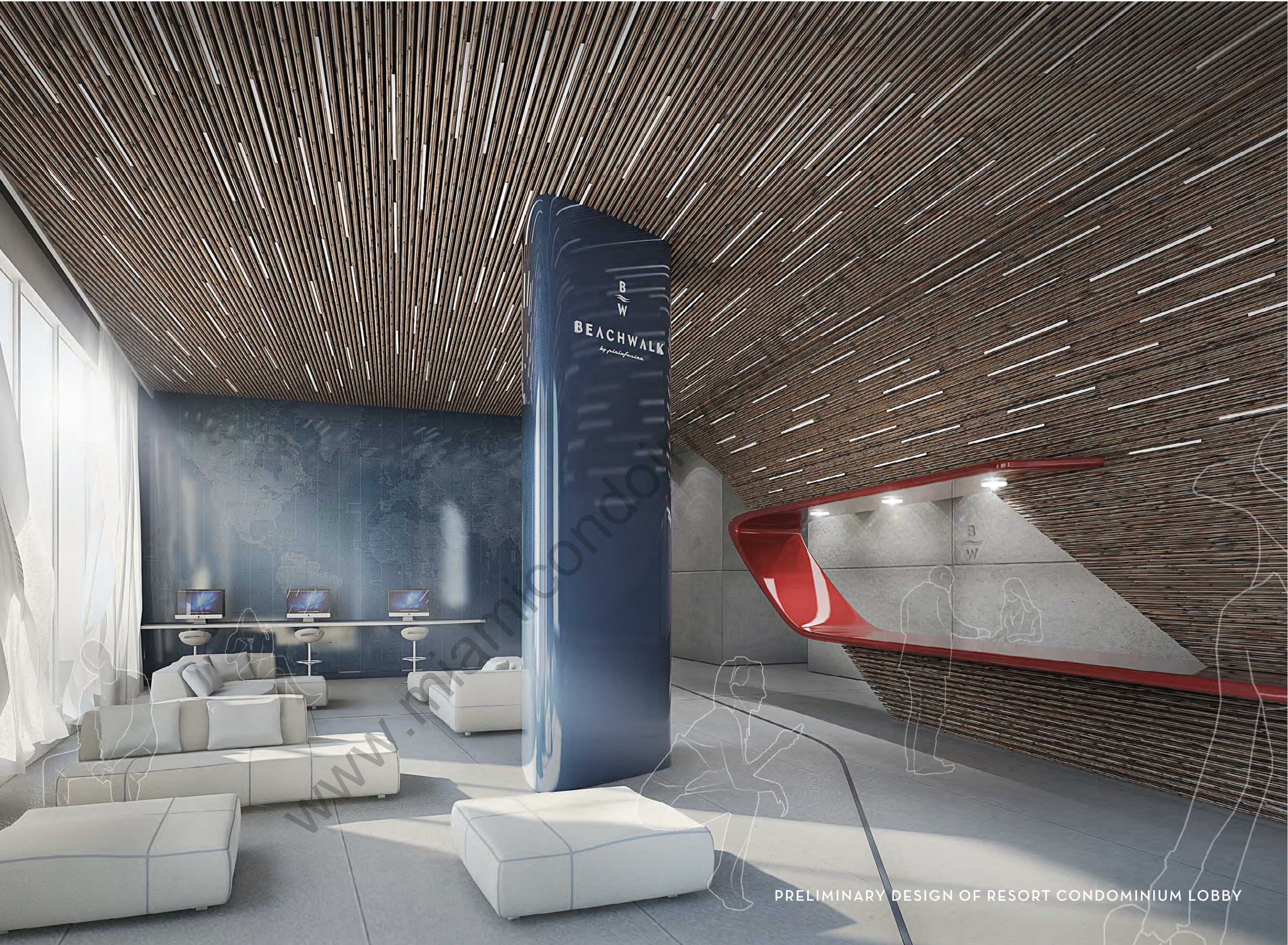


THE BEST OF BEACH & CITY LIVING

Beachwalk gives you all the privacy and serenity of Intracoastal living, but with the unmatched benefit of an exclusive beach club directly on the white powdery sands of South Florida's Hallandale Beach. Enjoy the comforts of spacious layouts and high-end designer finishes of the exquisite pre-furnished two- or three-bedroom residences. Indulge in exceptional resort-style services such as 24-hour room service, housekeeping, an on-call concierge, and a complimentary shuttle service to the beach club. All these advantages will be available to guests of the resort condominium program as well. It's all yours at Beachwalk.







PRELIMINARY DESIGN OF RESORT CONDOMINIUM LOBBY

RESORT-STYLE AMENITIES DESIGNED EXCLUSIVELY FOR YOU

- Infinity edge pool set alongside the Intracoastal Waterway
- Spectacular 34th floor Cielo Room pool deck with private cabanas and infinity pool overlooking the Atlantic Ocean
- State-of-the-art, fully equipped fitness center and cardio theatre with Intracoastal views
- Seaside dining along the Intracoastal Waterway
- Sundry shop
- Health Spa with male and female saunas and locker rooms
- Complimentary shuttle to your members-only beach club
- Housekeeping, cleaning and laundry staff
- An on-call concierge for dinner, spa and nightclub reservations, event ticket services, yacht charters, travel itinerary planning and more
- 24-hour room service offered to all units, 365 days a year
- 24-hour valet parking
- Wireless high-speed internet throughout the common areas
- High-speed elevators
- Full-featured security system

www.miamicondoinvestments.com



INTRACOASTAL
INFINITY POOL
BY PININFARINA





34TH FLOOR CLUB CIELO BY PININFARINA

SEE LEGAL DISCLAIMER ON THE FINAL PAGE.



AMAZING BEACH CLUB AMENITIES

Your members-only beach club at Beachwalk includes access to exclusive privileges such as:

- Valet service
- Members-only changing suite featuring lockers, private showers, sauna and treatment rooms
- Shuttle service between Beachwalk and the beach club
- Complimentary beachside towel service (subject to availability)
- Complimentary beachside chaise and umbrella service (subject to availability)
- Beachside food and beverage services
- Members-only sun deck and plunge pool area with multiple showers
- On-site spa services
- On-site Beachwalk Bar & Grill restaurant
- Members-only invitations to special events
- 10% off all purchases at the restaurant and sun deck





UNPARALLELED BEACH CLUB
DESIGNED BY PININFARINA

OUTDOOR LIFESTYLE AT ITS FINEST

Here at your members-only beach club, the Beachwalk difference is crystal clear. Hardwood decks, ultra-plush lounges and seating areas, and oversized umbrellas offer comfortable relaxation in the sun or shade. Service is the name of the game, with attentive professionals always ready to provide an extra towel, deliver a tasty treat and frosty cocktail from the Beachwalk Bar & Grill, or set you up with your own personal camp directly on the sand, steps from the waves.





ALWAYS AT YOUR SERVICE

The Beachwalk experience is one of resort-style enjoyment, absolute convenience and uncompromising quality. To make this possible, Beachwalk has contracted Gemstone, a global hospitality leader with a proven track record for delivering world-class services and amenities. These experts in their field have over 60 years of combined experience in hospitality and service and a dedicated client service with a 24-hour hotline. They are the management company of choice for such prominent properties as:

- Mosaic - Beverly Hills, CA
- Maison 140 - Beverly Hills, CA
- Zermatt Resort - Midway, UT
- Homestead Resort - Midway, UT
- Copley Square - Boston, MA
- Hotel Carlton - New York, NY
- Albuquerque Radisson - Albuquerque NM
- Hollywood Beach - Hollywood Beach, FL
- Tivoli Lodge - Vail, CO
- Pala Mesa - Fallbrook, CA
- Sky Lodge - Park City, UT
- Forest Suites - Lake Tahoe, CA



SEE LEGAL DISCLAIMER ON THE FINAL PAGE.





DESIGNED FOR YOUR ULTIMATE ENJOYMENT

DECORATOR READY
CONDOMINIUM RESIDENCES

All Residences Feature:

- Oversized terraces with views of the Intracoastal Waterway or Atlantic Ocean
- Designer lighting, fixtures and accessories
- Kitchens with:
 - Premium European-style cabinetry
 - Imported stone counters with breakfast bar in most residences
 - Stainless steel designer appliance package with refrigerator/freezer, glass cooktop, built-in oven, multi-cycle whisper-quiet dishwasher, built-in microwave with integrated vent hood, and stackable washer/dryer
- Bathrooms with:
 - Premium European-style cabinetry
 - Imported designer tile floors and wet walls
 - Full-size vanity mirrors
 - Spacious soaking tub
 - Glass-enclosed shower



YOUR RESIDENCE YOUR PRIVATE RETREAT

Stunning views, masterful design and unparalleled services are part of everyday life at Beachwalk. Created to be inviting and impressive, our two- and three-bedroom residences feature floor-to-ceiling windows, open-concept layouts, wide terraces with glass railings, smart building technology, high-speed wireless internet and communications, and designer European-inspired finishes. These are just a few reasons why Beachwalk will exceed your expectations.

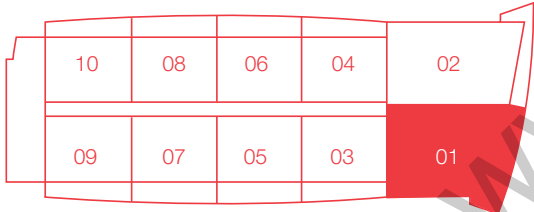
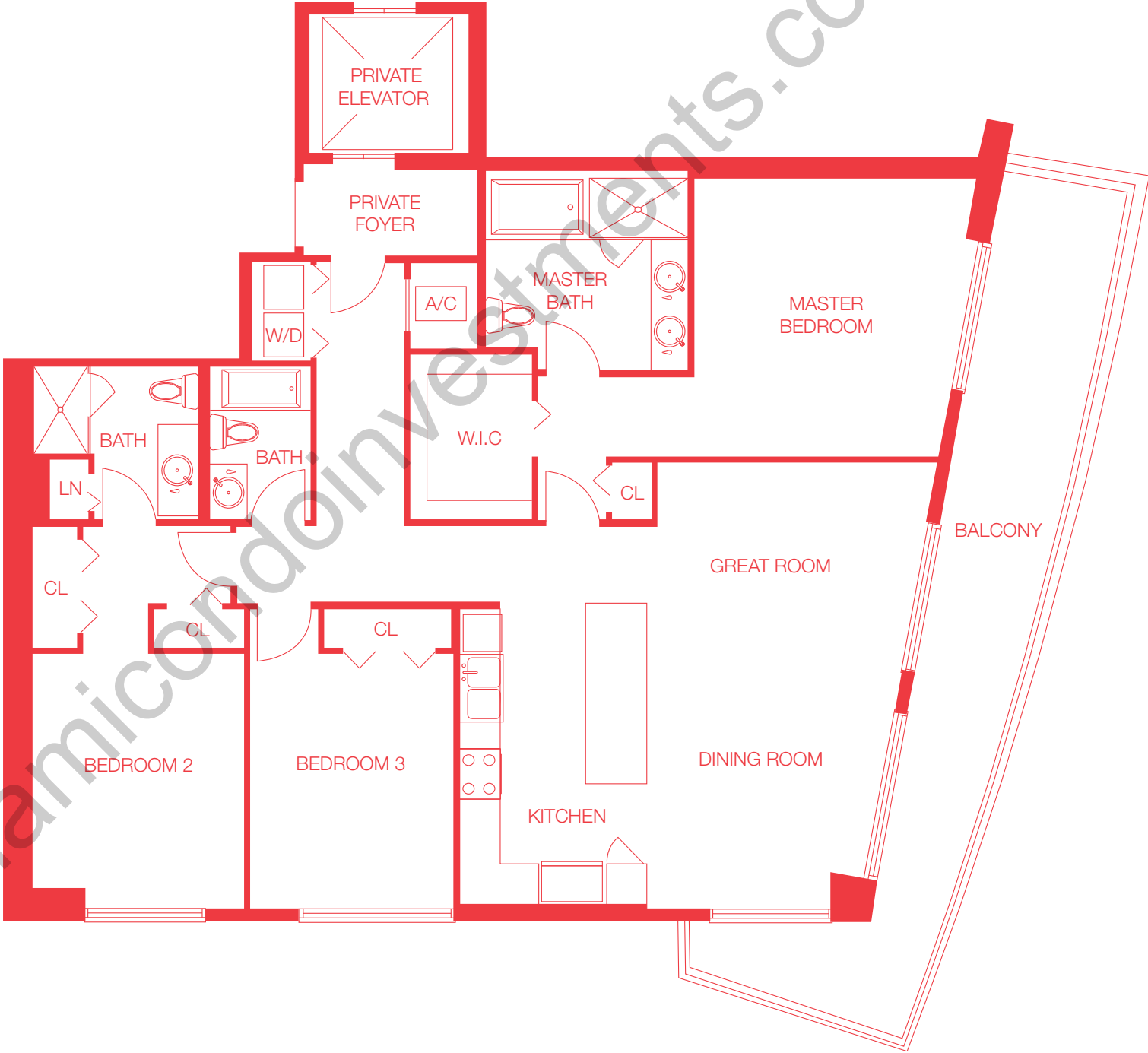


UNIT 01

DECORATOR READY CONDOMINIUM

3 BEDROOMS
3 BATHROOMS

RESIDENCE	1,853 sq.ft.	172.1 m ²
BALCONY	344 sq.ft.	32 m ²
<hr/>		
TOTAL UNIT	2,197 sq.ft.	204.1 m ²



Stated dimensions are measured to the exterior boundaries of the exterior walls and the centerline of interior demising walls and in fact vary from the dimensions that would be determined by using the description and definition of the "Unit" set forth in the Declaration (which generally only includes the interior airspace between the perimeter walls and excludes interior structural component). For your reference, the area of the Unit, determined in accordance with those defined unit boundaries, is 1,737 sq. ft. Note that measurements of rooms set forth on this floorplan are generally taken at the greatest points of each given room (as if the room were a perfect rectangle), without regard for any cutouts. Accordingly, the area of the actual room will typically be smaller than the product obtained by multiplying the stated length times width. All dimensions are approximate and may vary with actual construction, and all floorplans and development plans are subject to change.



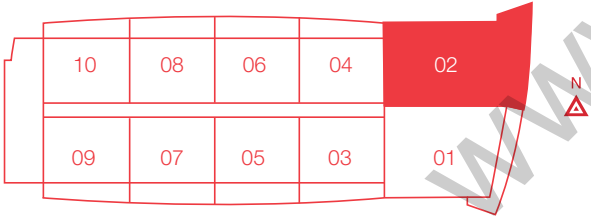
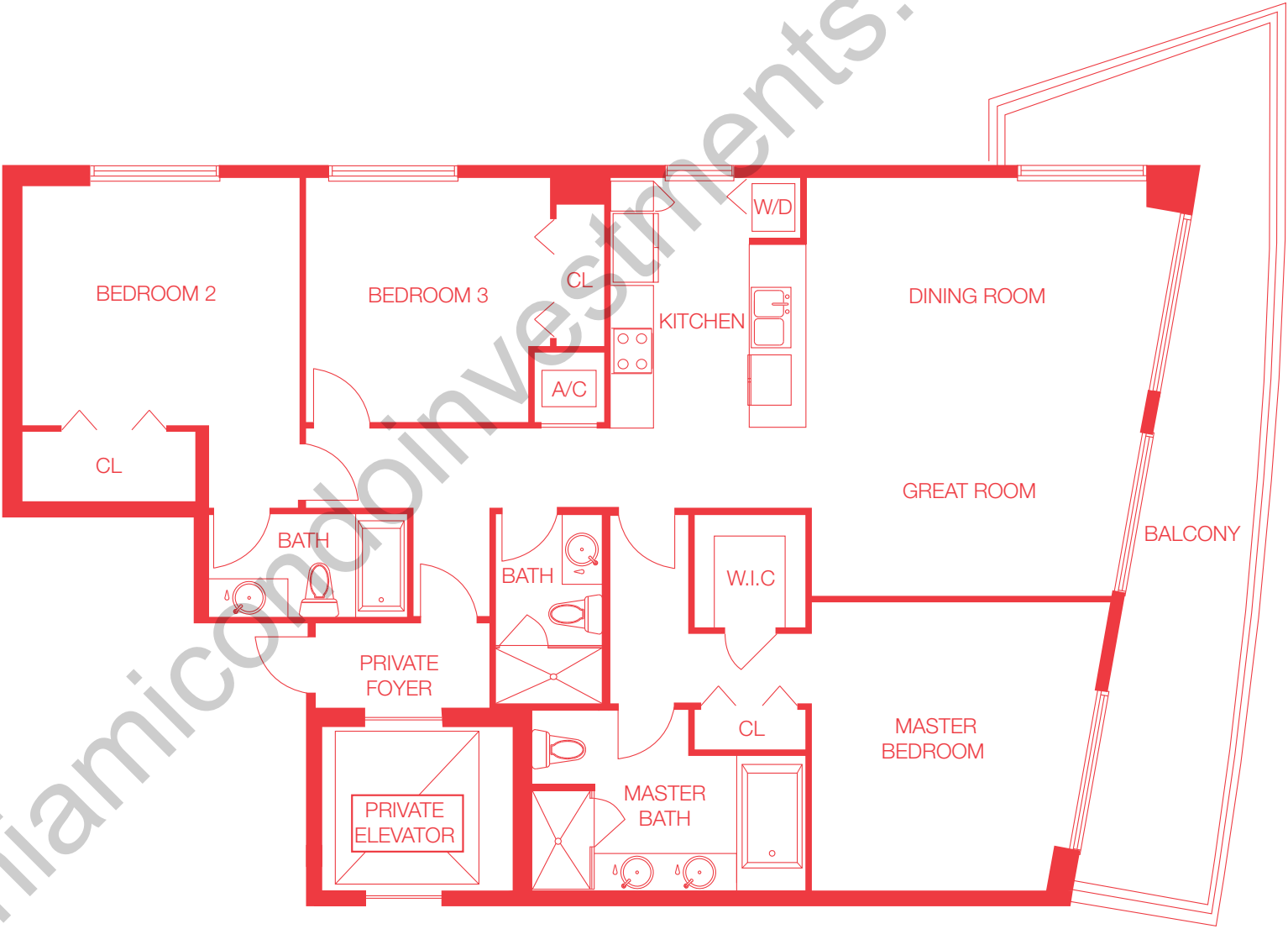
UNIT O2

DECORATOR READY
CONDOMINIUM

3 BEDROOMS

3 BATHROOMS

RESIDENCE	1,711 sq.ft.	159 m ²
BALCONY	319 sq.ft.	29.6 m ²
<hr/>		
TOTAL UNIT	2,030 sq.ft	188.6 m ²



Stated dimensions are measured to the exterior boundaries of the exterior walls and the centerline of interior demising walls and in fact vary from the dimensions that would be determined by using the description and definition of the “Unit” set forth in the Declaration (which generally only includes the interior airspace between the perimeter walls and excludes interior structural component). For your reference, the area of the Unit, determined in accordance with those defined unit boundaries, is 1,577 sq. ft. Note that measurements of rooms set forth on this floorplan are generally taken at the greatest points of each given room (as if the room were a perfect rectangle), without regard for any cutouts. Accordingly, the area of the actual room will typically be smaller than the product obtained by multiplying the stated length times width. All dimensions are approximate and may vary with actual construction, and all floorplans and development plans are subject to change.



YOUR RESIDENCE YOUR REWARD

FINISHED & FURNISHED RESORT UNITS

Beachwalk also offers resort services that are perfect for part-time residents seeking the ultimate benefit of a property that is managed by a resort operator. These 216 beautifully furnished resort units come with all the same finishes of our condo units, with extra features such as:

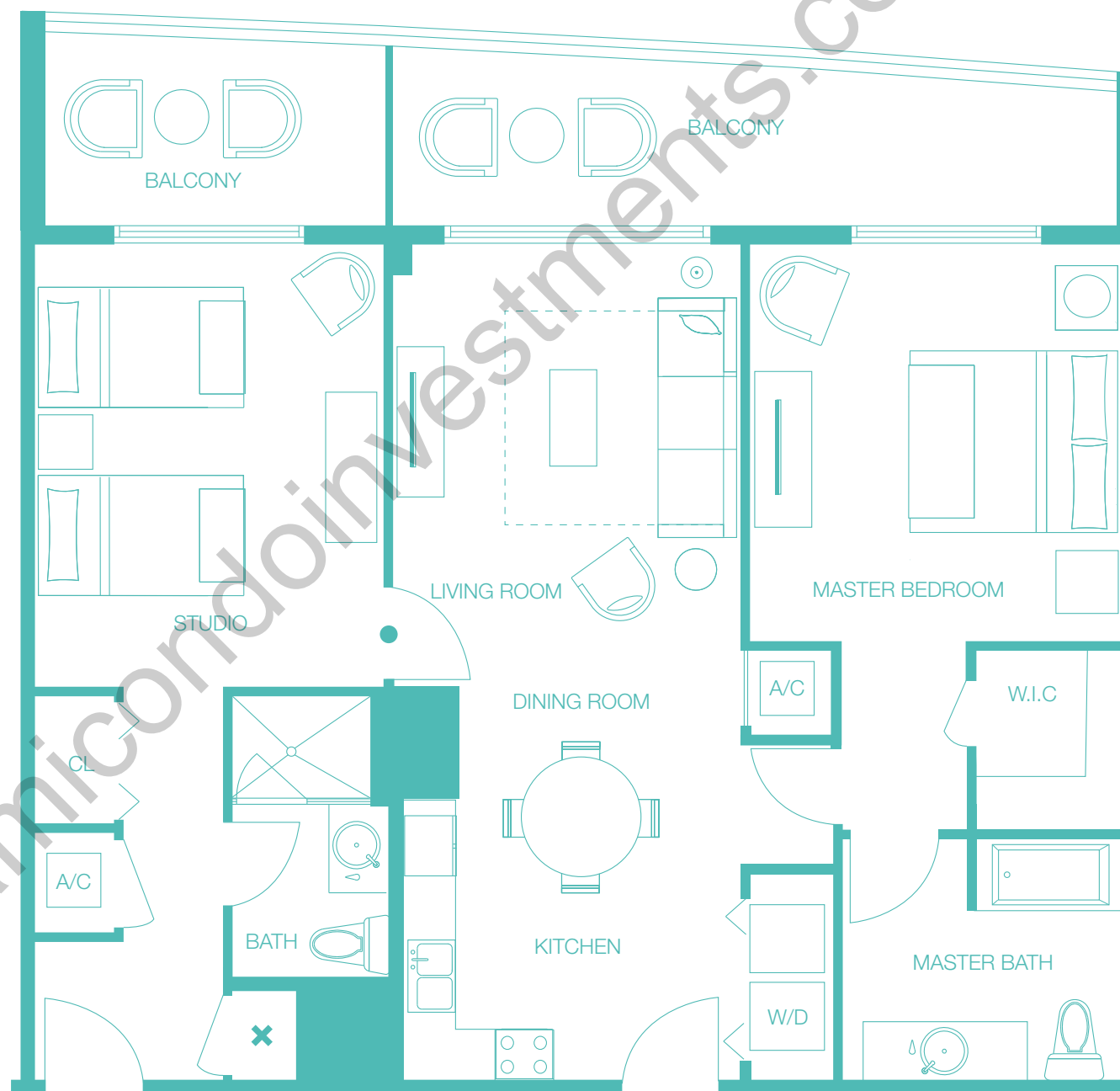
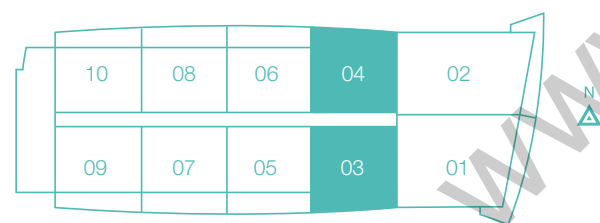
- Fully finished interiors complete with contemporary Italian designer furniture
- Living rooms appointed with luxury furnishings and LED Smart televisions
- In-suite technology, including high-speed internet access, WiFi, multiple phone extensions with voicemail and individual climate control
- Security features including in-room safes and electronic door locks
- All hotel services managed and operated by famed hotelier, Gemstone Hotels & Resorts Units



RESORT UNITS

2 BATHROOMS

TOTAL 1,312 sq.ft. 121.9 m²



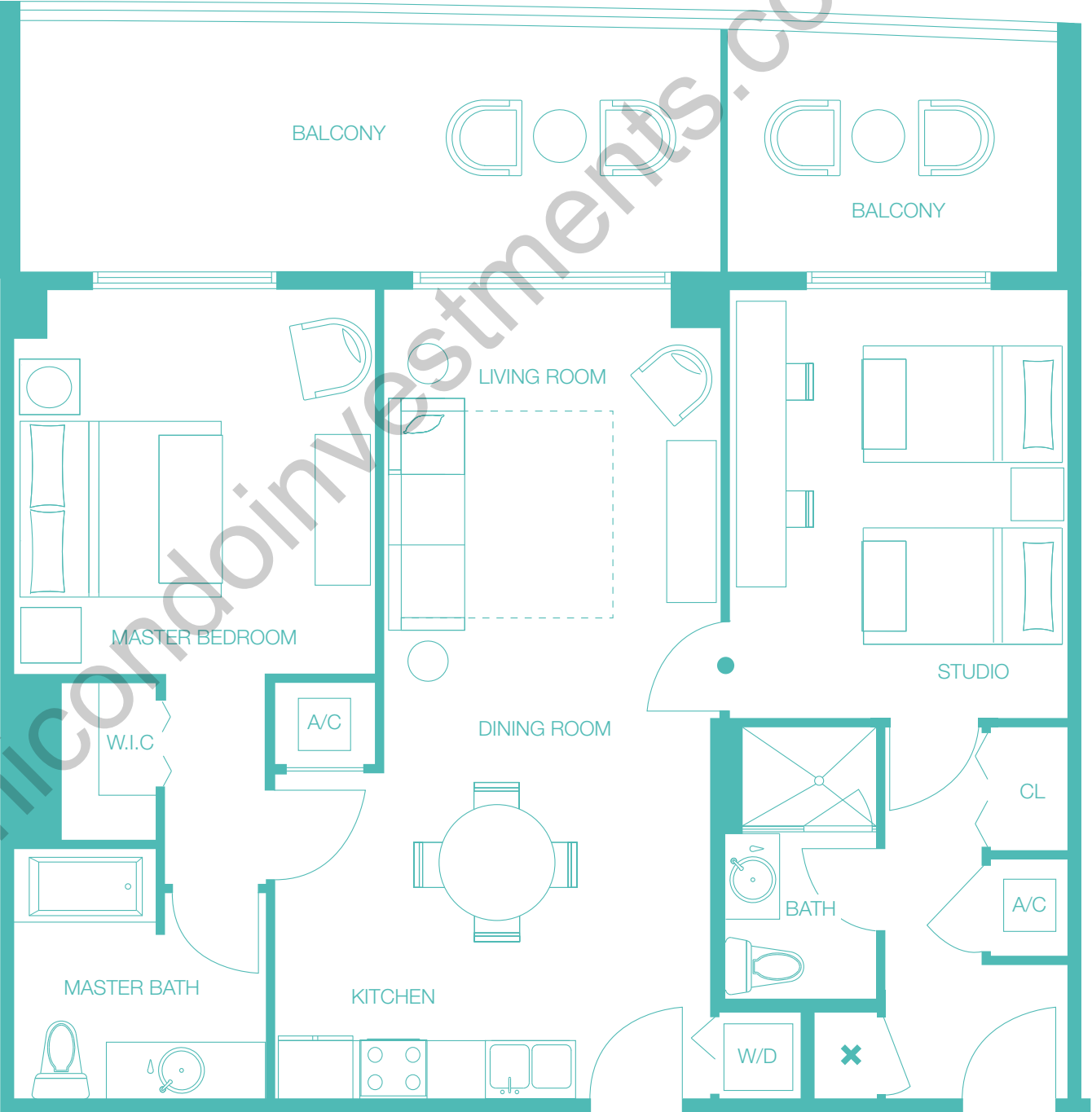
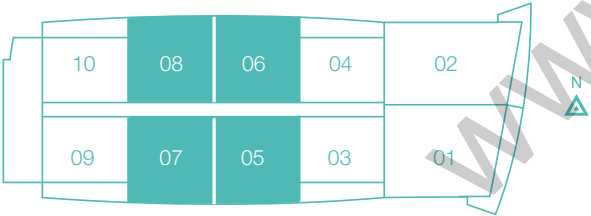
- LOCKOUT DOOR
- ✕ OWNER'S CLOSET

UNIT 05, 06, 07, 08

FLOORS 3 - 30
FINISHED & FURNISHED
RESORT UNITS

2 BEDROOMS
2 BATHROOMS

ONE BEDROOM SUITE	743 sq.ft.	69 m ²
ONE BEDROOM SUITE BALCONY	183 sq.ft.	17 m ²
STUDIO	357 sq.ft.	33.2 m ²
STUDIO BALCONY	89 sq.ft.	8.3 m ²
<hr/>		
TOTAL	1,372 sq.ft.	127.5 m ²



- LOCKOUT DOOR
- ✕ OWNER'S CLOSET



Stated dimensions are measured to the exterior boundaries of the exterior walls and the centerline of interior demising walls and in fact vary from the dimensions that would be determined by using the description and definition of the "Unit" set forth in the Declaration (which generally only includes the interior airspace between the perimeter walls and excludes interior structural component). For your reference, the area of the Unit, determined in accordance with those defined unit boundaries, is 1,020 sq. ft. for units 05, 1,028 sq. ft. for units 06, 1,030 sq. ft. for units 07, 1,037 sq. ft. for units 08. Note that measurements of rooms set forth on this floorplan are generally taken at the greatest points of each given room (as if the room were a perfect rectangle), without regard for any cutouts. Accordingly, the area of the actual room will typically be smaller than the product obtained by multiplying the stated length times width. All dimensions are approximate and may vary with actual construction, and all floorplans and development plans are subject to change.



UNIT 09,10

FLOORS 3 - 30

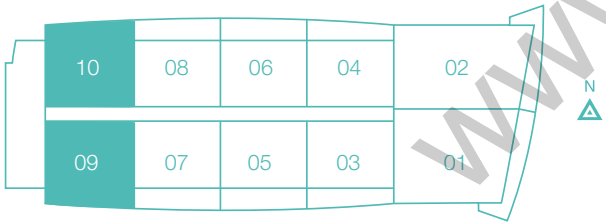
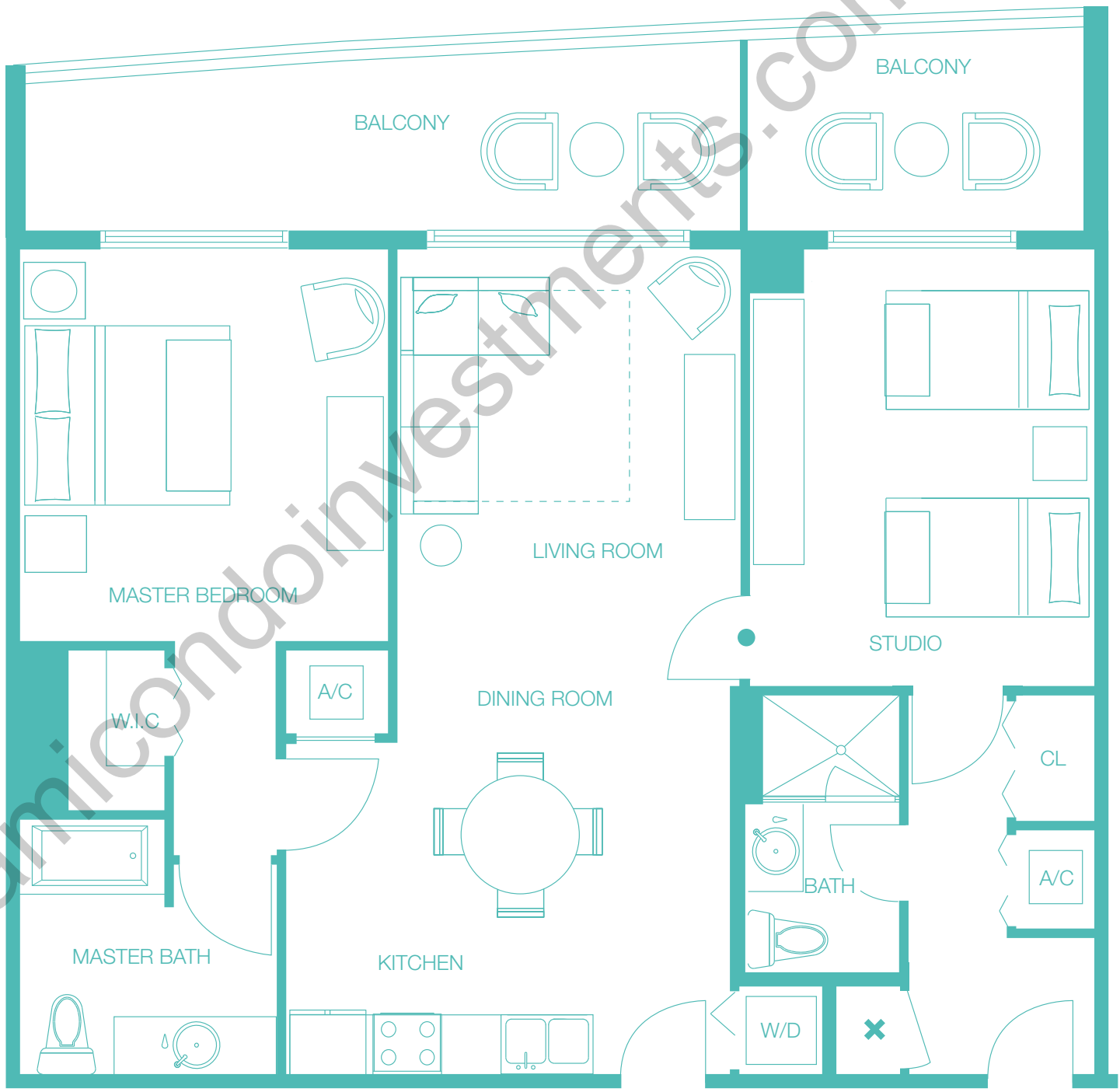
FINISHED & FURNISHED

RESORT UNITS

2 BEDROOMS

2 BATHROOMS

ONE BEDROOM SUITE	730 sq.ft.	6.7.8m ²
ONE BEDROOM SUITE BALCONY	143 sq.ft.	13.3m ²
STUDIO	357 sq.ft.	33.2 m ²
STUDIO BALCONY	78 sq.ft.	7.2 m ²
<hr/>		
TOTAL	1,308 sq.ft.	121.5 m ²



- LOCKOUT DOOR
- ✕ OWNER'S CLOSET



Stated dimensions are measured to the exterior boundaries of the exterior walls and the centerline of interior demising walls and in fact vary from the dimensions that would be determined by using the description and definition of the “Unit” set forth in the Declaration (which generally only includes the interior airspace between the perimeter walls and excludes interior structural component). For your reference, the area of the Unit, determined in accordance with those defined unit boundaries, is 1,020 for units 09, is 1,028 for units 10. Note that measurements of rooms set forth on this floorplan are generally taken at the greatest points of each given room (as if the room were a perfect rectangle), without regard for any cutouts. Accordingly, the area of the actual room will typically be smaller than the product obtained by multiplying the stated length times width. All dimensions are approximate and may vary with actual construction, and all floorplans and development plans are subject to change.

