



PALMA

MIAMI BEACH RESIDENCES

PALMA is immediately an architectural icon in this area of Miami Beach. Exclusive and prestigious, it is designed to be a love letter for those looking for a boutique residence created for a privileged few. From the moment you enter you will experience glamor and romantic interiors by award-winning Studio Ramirez. In your home, you will awaken to the perfection of **PALMA** floorplans that were created to be your Mediterranean sanctuary and place for celebrating life.

DESIGNED for a
luxe-life

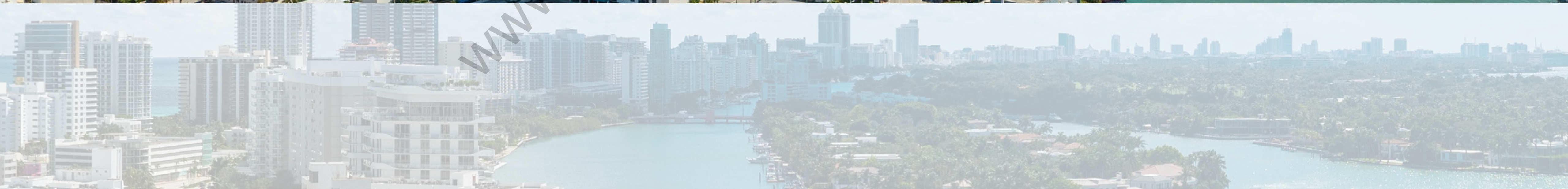
www.miamicondoinvestments.com



OCEAN

BAY

Water everywhere the eye can see.



PALMA

MIAMI BEACH RESIDENCES



PALMA

MIAMI BEACH RESIDENCES

BEACH ACCESS

MIAMI BEACH BANDSHELL

AQUATIC CENTER

72 PARK

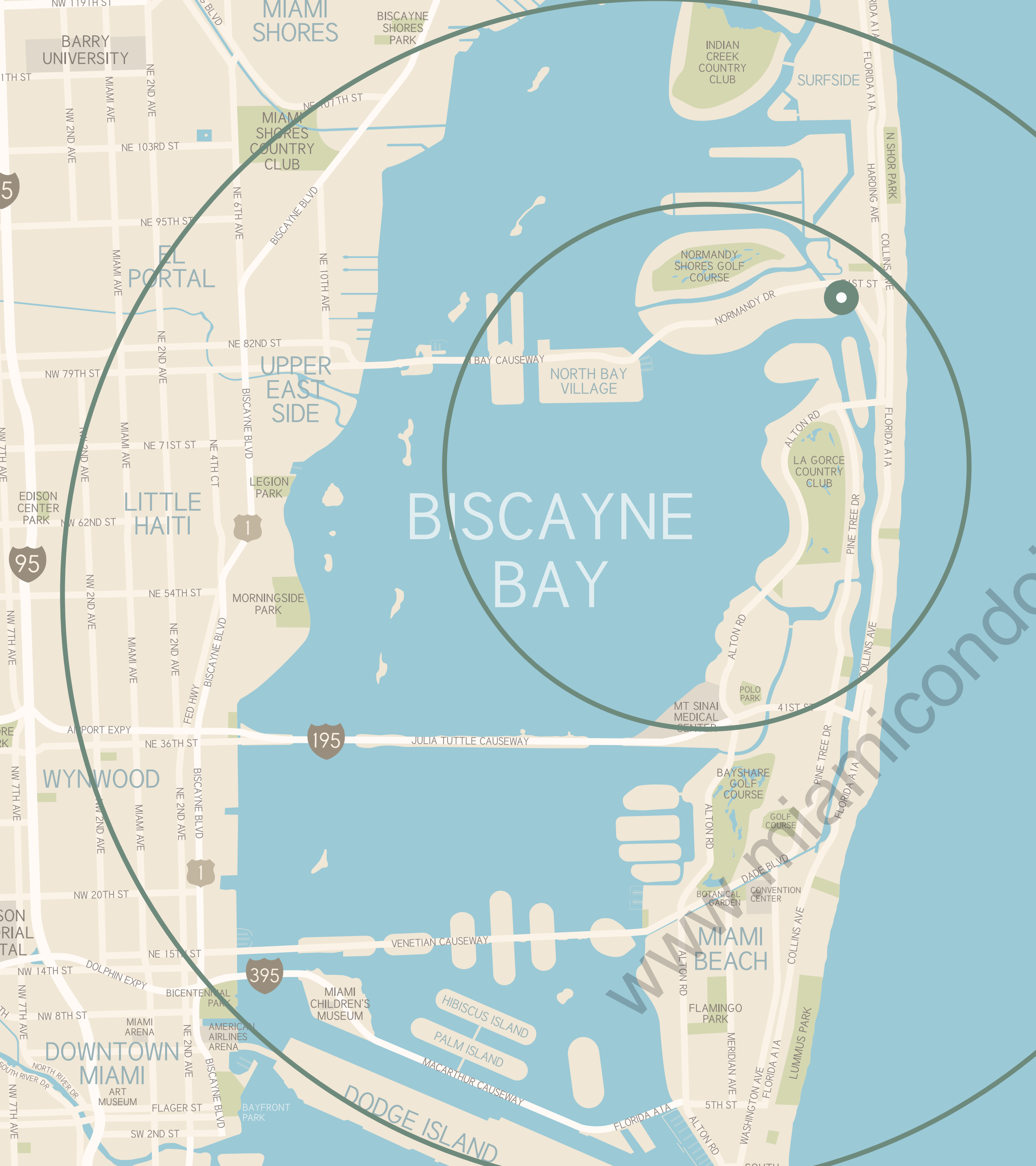
CARLYLE

MIAMI BEACH TENNIS CENTER

NORTH SHORE PARK YOUTH CENTER

PARKVIEW PADDLEBOARD DOCK

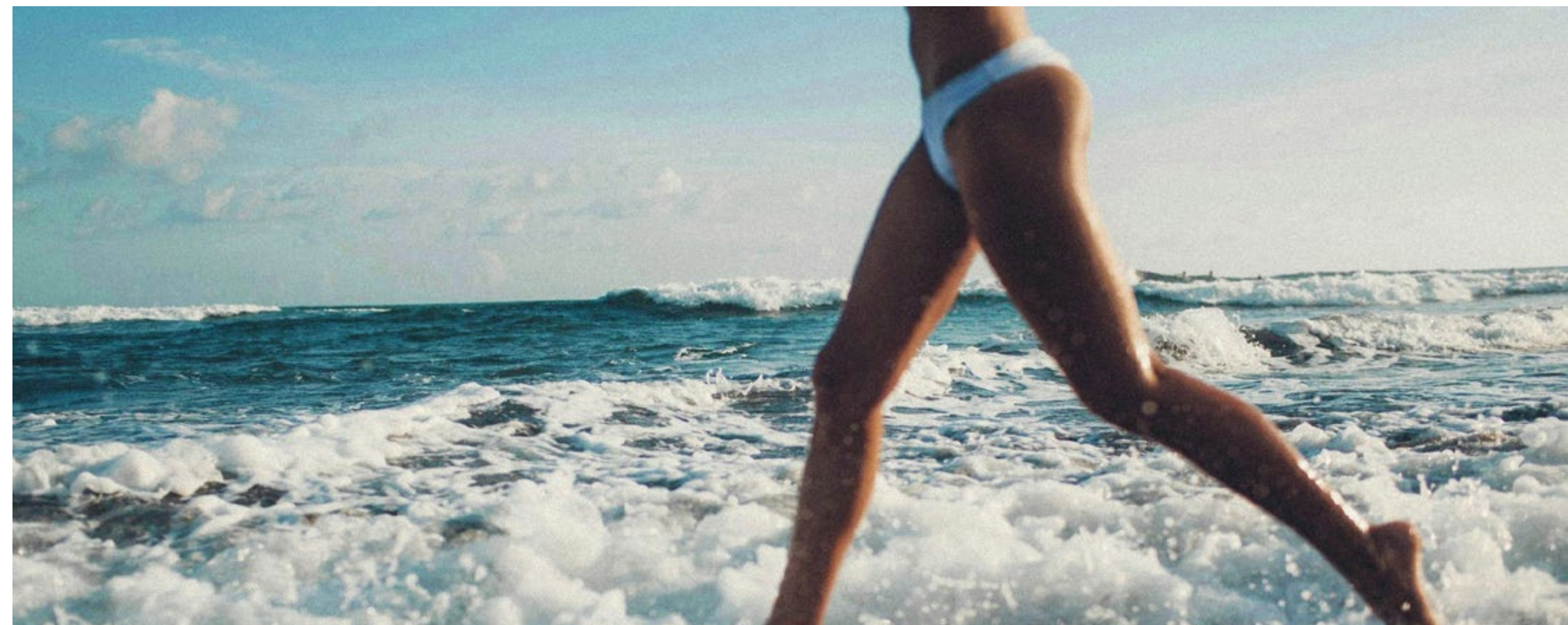




the luxury of island life

PALMA

FALL IN LOVE
WITH THE MOMENT

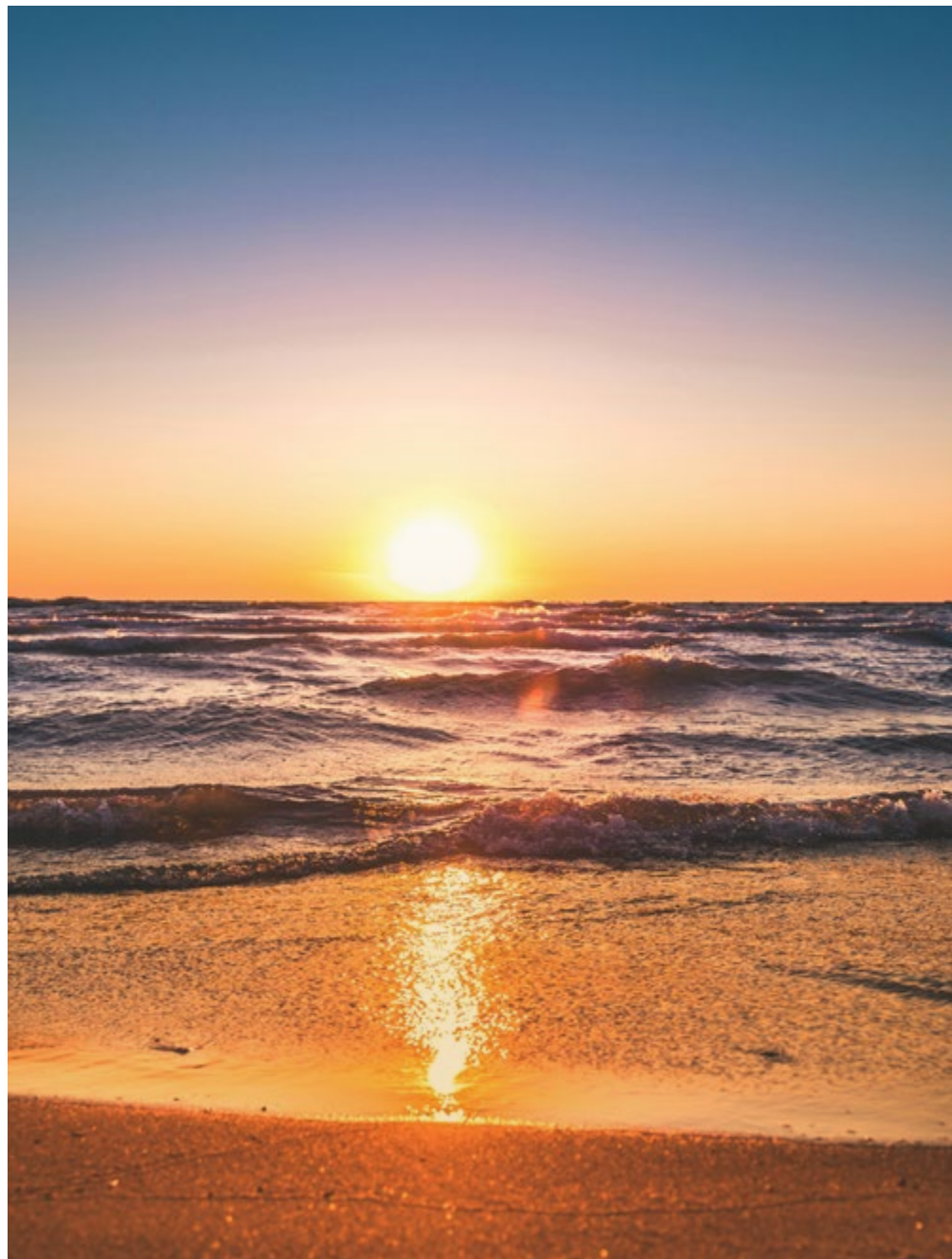


AND THE SETTING

*A beautiful island
story in your life,
and you are
the muse.*

www.miamicondoinvestments.com





A CELEBRATION
OF YOUR LIFE



FROM SUNRISE
TO SUNSET



BAL HARBOUR SHOPS

Indulge in unparalleled luxury shopping at Bal Harbour Shops, the epitome of sophistication in Miami Beach. A curated collection of world-renowned designer boutiques, exclusive brands, and exquisite dining options are minutes from your home. From high-end fashion to fine jewelry, discover the pinnacle of style and elegance in one of the most prestigious shopping destinations in the world. Here, luxury knows no bounds.



TENNIS
KAYAKING
JET SKIS
SUNBATHING
GOLF
PADDLE BOARDING
BASKETBALL
RUNNING
CYCLING
SWIMMING



AN ACTIVE LIFE IN YOUR
NEIGHBORHOOD

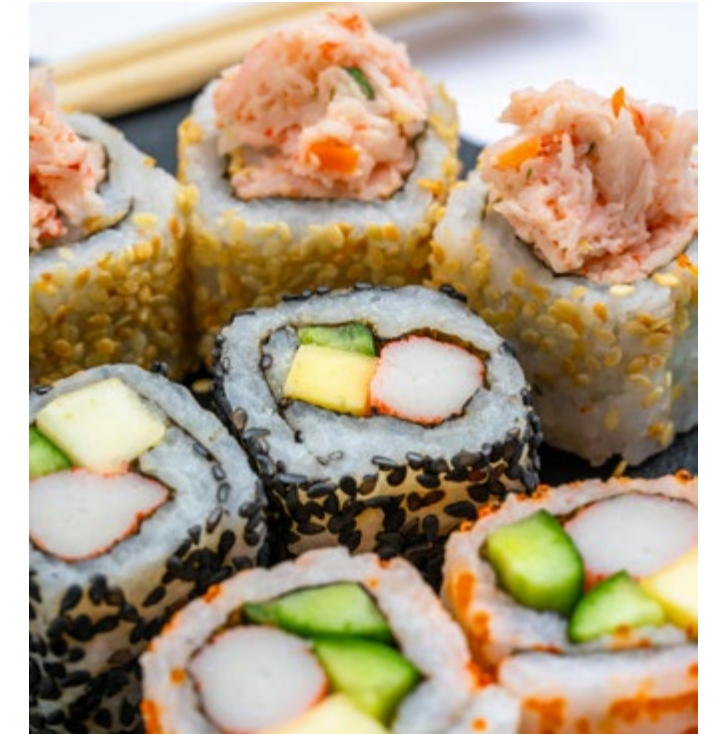
Live an active and vibrant lifestyle at PALMA in Miami Beach. From coastal strolls, beach relaxation, and thrilling water sports like jet skiing and paddle boarding you'll have a world of natural fitness always at your door. The, add the neighboring tennis, golf, and beach volleyball and your every day is an adventure.





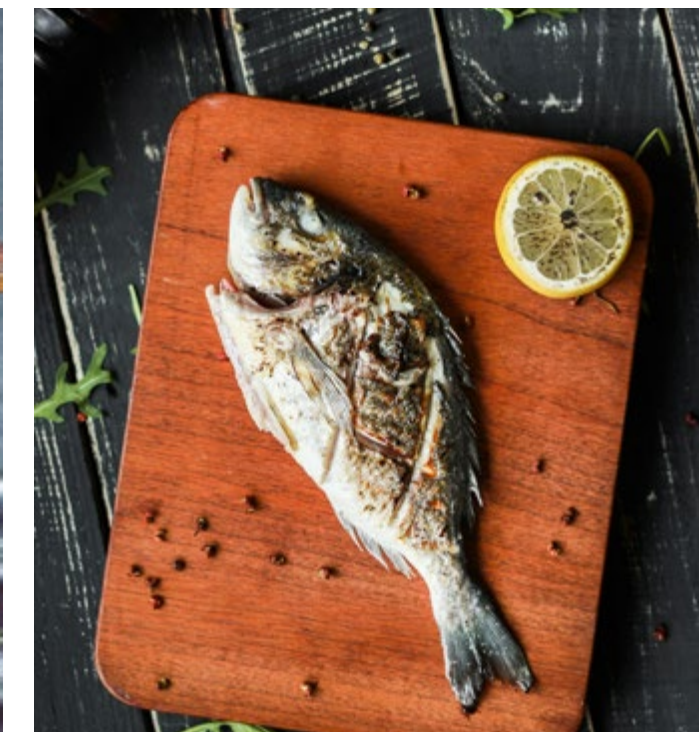
ONE OF THE NATIONS BEST SPAS

The epitome of indulgence nestled right next door to your home is where you can step into a world of tranquility and rejuvenation. The Carillon Miami Wellness Resort offers an array of luxurious treatments and was named one of the best by Condé Nast Traveller. From soothing massages to invigorating facials, all can be tailored to restore your body and mind.



A CHARMING DINING SCENE MEDITERRANEAN STYLE.

From **PALMA** you can embark on a culinary journey through a vibrant Mediterranean-type neighborhood. Meander small streets lined with quaint cafes, bustling bistros, and cozy trattorias. Find fragrant seafood paella to mouthwatering kebabs, each offering there own flavor of living on an island and near the sea. Here, you can explore and discover deliciousness at every corner.



FAMOUS NEW YORK CHEF
OPENS NEXT DOOR



POPULAR NYC PIZZERIA
ROBERTA'S ANNOUNCES A
PERMANENT MIAMI LOCATION
- EATER / MIAMI

ROBERTA'S WILL MAKE ITS LONG-
AWAITED MIAMI COMEBACK
- TIMEOUT

ICONIC NEW YORK PIZZERIA
ROBERTA'S SET TO RETURN TO
MIAMI WITH PERMANENT
LOCATION AT 72 PARK
- PROFILE MIAMI

ICONIC NEW YORK PIZZERIA
ROBERTA'S SET TO ELEVATE MIAMI
BEACH DINING EXPERIENCE AT
72 PARK
- FLORIDA YIMBY



NEW YORK MEETS MIAMI BEACH



REVITALIZATION HELPS MIAMI BEACH ENTER A NEW REALM OF POSSIBILITIES *BETTER THAN EVER BEFORE*

The North Miami Beach Oceanside Park is being referred to as the Central Park of this area. Voters have approved a new town center and this monumental transformation. A total of \$53.8 million will be invested in a multipurpose facility located on a four acre site just blocks away from PALMA and feature a competition aquatic center, an innovation center, a library, a parking garage and added green spaces that are manicured and beautifying the area.



AQUATIC CENTER

REVITALIZATION





*A Mediterranean experience
that begins in Miami Beach*



PALMA

MIAMI BEACH RESIDENCES



PALMA is immediately an architectural icon in this area of Miami Beach. Exclusive and prestigious, it is designed to be a love letter for those looking for a boutique residence created for a privileged few. From the moment you enter you will experience glamorous and romantic interiors by award-winning Studio Ramirez. In your home, you will awaken to the perfection of **PALMA** layouts that were created to be your Mediterranean sanctuary and place for celebrating life..

OUR TEAM

DEVELOPER
Lefferts

ARCHITECTURE
Built Form

INTERIOR DESIGN
Studio Ramirez

LANDSCAPE ARCHITECT
Keith

THE DETAILS

FULLY FURNISHED RESIDENCES
& NO MINIMUM RENTAL
RESTRICTIONS

RESIDENTIAL MIX

1 Bedroom
405-573 SF | 38 - 53 M²

2 Bedroom
620-889 SF | 58 - 83 M²

Penthouses
414-1342 SF | 38 - 125 M²



14
STORIES

126
RESIDENCES

ARTIST CONCEPTUAL RENDERING. DEVELOPER MAY CHANGE WITHOUT NOTICE.

THERE'S NO OTHER PLACE LIKE IT.

Welcome to **PALMA**, where coastal charm meets the excitement of Miami Beach. Discover a hidden gem along this coastline, bursting with attractions for the avid outdoor enthusiast. Picture yourself strolling along the stunning Miami Beach or soaking up the sun at North Beach Oceanside Park. Swing into action at the Miami Beach Tennis Center or tee off at the prestigious Normandy Shores Golf Club. Dive into adventure with beach volleyball, jet skis, paddle boards, and kayak rentals readily available. And don't miss the iconic Miami Beach Boardwalk, your gateway to a world of dining, cafes, bars, and parks, all nestled beneath the shade of swaying palm trees.

Imagine the magic of live music under the stars at the Miami Beach Bandshell, or exploring the vibrant energy of a farmer market surrounding the neighboring Normandy Fountain. With seamless access to Downtown Miami and the upscale shopping of Bal Harbour, every moment in **PALMA** is infused with possibility.

Life on the beach has never looked so enticing, and now, with **PALMA**, it's yours to embrace.

www.miamicondoinvestments.com



BUILDING FEATURES

- 14-story landmark building designed by Built Form
- Prime Miami Beach location just steps from the beach
- Cutting-edge green building with SMART technology LEED Gold certification
- Curated retail tenants on ground level







THE AMENITIES



RESORT-STYLE POOL

AMENITIES

- Double-height lobby with floor-to-ceiling windows
- Reception Desk
- 24-hour secure access to building, amenities, garage and private residential areas
- Resort-style pool with private daybeds and luxe cabanas
- Outdoor summer kitchen with bar and pool deck event area
- Resident lounge on pool level with indoor and outdoor seating for private resident events
- State-of-the-art fitness center fully-equipped with Technogym and view of resort pool area
- Wellness hot tub and arctic cold-plunge pools
- Advanced technology SMART building with high-speed fiber-optic internet access
- WiFi throughout all common areas









PALMA BEACH CLUB

Welcome to “luxury beach”, where indulgence meets relaxation in the heart of Miami Beach. Picture yourself lounging in our sumptuous beach chairs, where every detail is tailored to your comfort and enjoyment. Our attentive staff anticipates your every need, ensuring seamless service with a smile.

Craving Mediterranean flavors? Our on-demand food service brings the taste of the Mediterranean straight to your cabana. Finally a beach club that is curated to perfection.





THE RESIDENCES



RESIDENTIAL FEATURES

- Beach-luxe residences with modern open layouts
- All residences are fully finished and furnished by award-winning Studio Ramirez
- Panoramic ocean and bay views in select units residences
- Private balconies for outdoor enjoyment from your home
- Luxurious 9-10 ft ceilings giving space and light to the feeling of your residence
- Floor-to-ceiling sliding glass doors with impact-resistant glass
- Advanced technology Smart Building
- Residences are pre-wired for high-speed internet and Wi-Fi
- Energy efficient central air conditioning and heating system
- Conveniently stacked washer and dryer included
- Spacious closets for your beach-chic wardrobe

KITCHEN

- Imported European-cabinets with premium fittings
- Bosch appliance package with refrigerator, oven, cooktop, microwave, and dishwasher
- Premium stone countertops & backsplashes for the ultimate culinary experience
- Contemporary stainless steel under-mounted sink
- Elegant faucet with integrated spray handle

MASTER BATHROOM

- Imported European cabinets with premium hardware and drawer pulls
- Premium stone countertops and backsplashes
- Rectangular trough porcelain sinks with dual elegant faucets (in select residences)
- Custom-finished porcelain floors and walls in wet areas
- Glass shower enclosures
- Premium European-style fixtures and accessories















ARTIST CONCEPTUAL RENDERING. DEVELOPER MAY CHANGE WITHOUT NOTICE.

YOUR “SOMETIMES” ISLAND HOME, WHERE FLEXIBILITY IS FREEDOM.

PALMA offers owners the ultimate flexibility in either creating a full-time residency or renting their homes full-time or part-time.

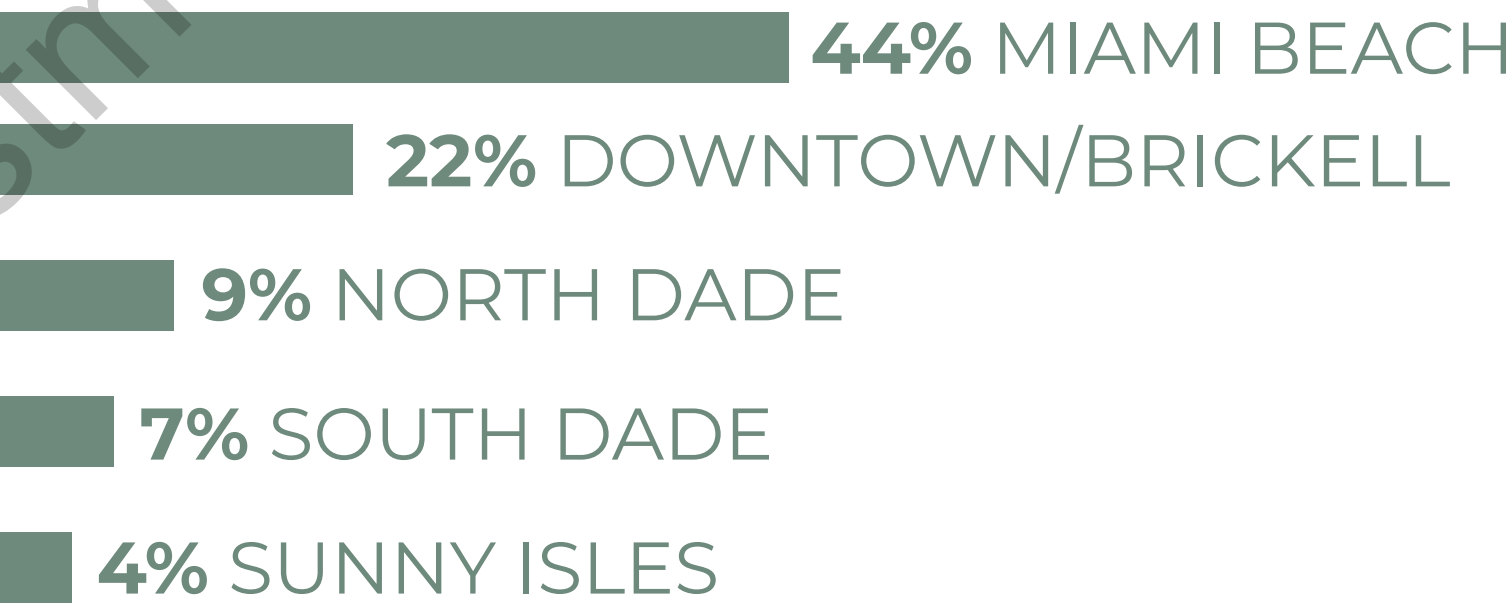
We believe the greatest ownership is one you can enjoy when visiting and otherwise enjoy revenue when away. Nothing could compare to the freedom you get in ownership at PALMA.



REASONS FOR VISIT



TOP AREAS FOR VISITORS:



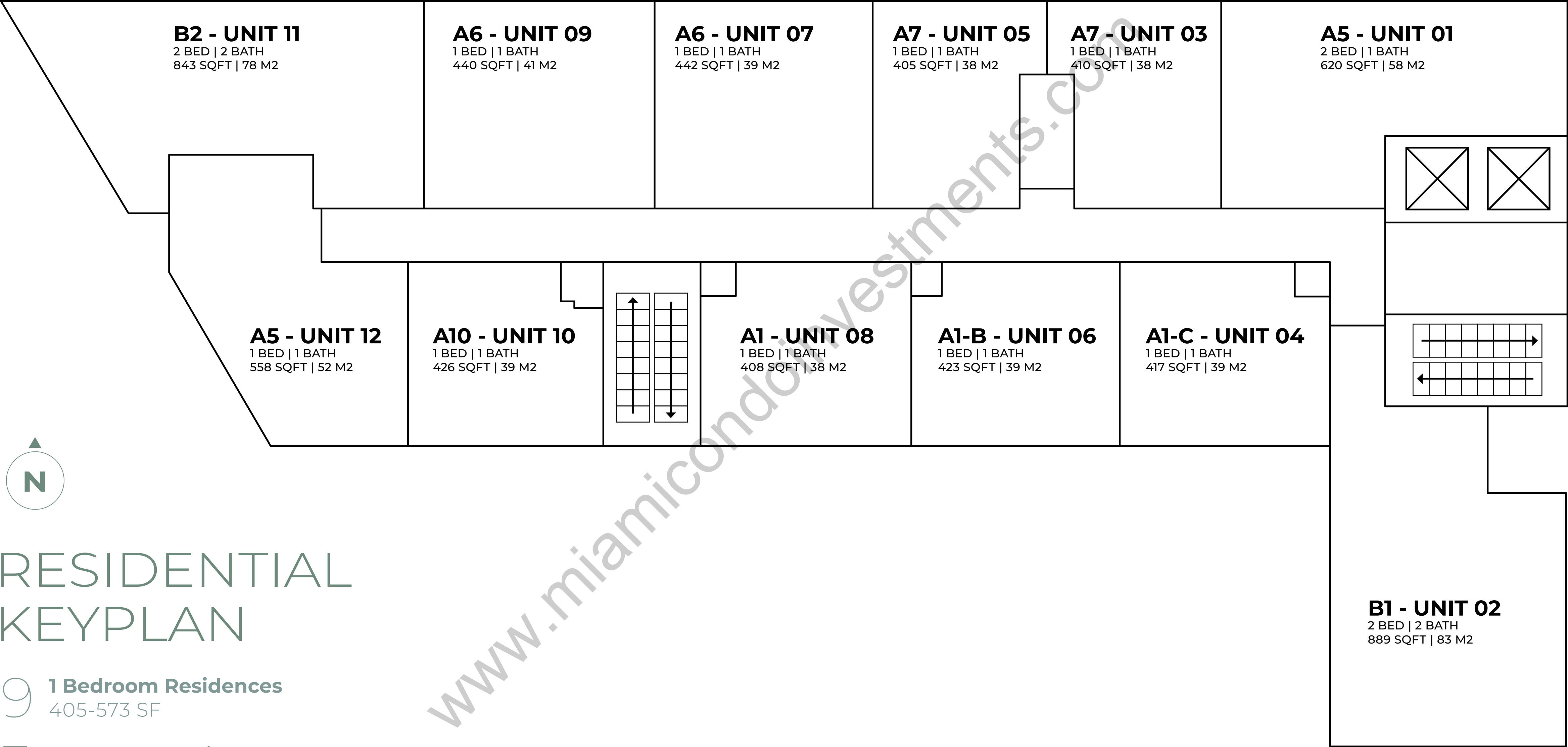
MIAMI BEACH VISITOR STATISTICS



STATISTICS ARE NOT THE OPINION OF THE DEVELOPER AND ONLY SERVE TO SHOW THIRD PARTY OPINIONS.
FOR YOUR OWN FORECASTING IT IS ALWAYS RECOMMEND YOU DO YOUR OWN RESEARCH AND DUE DILIGENCE.



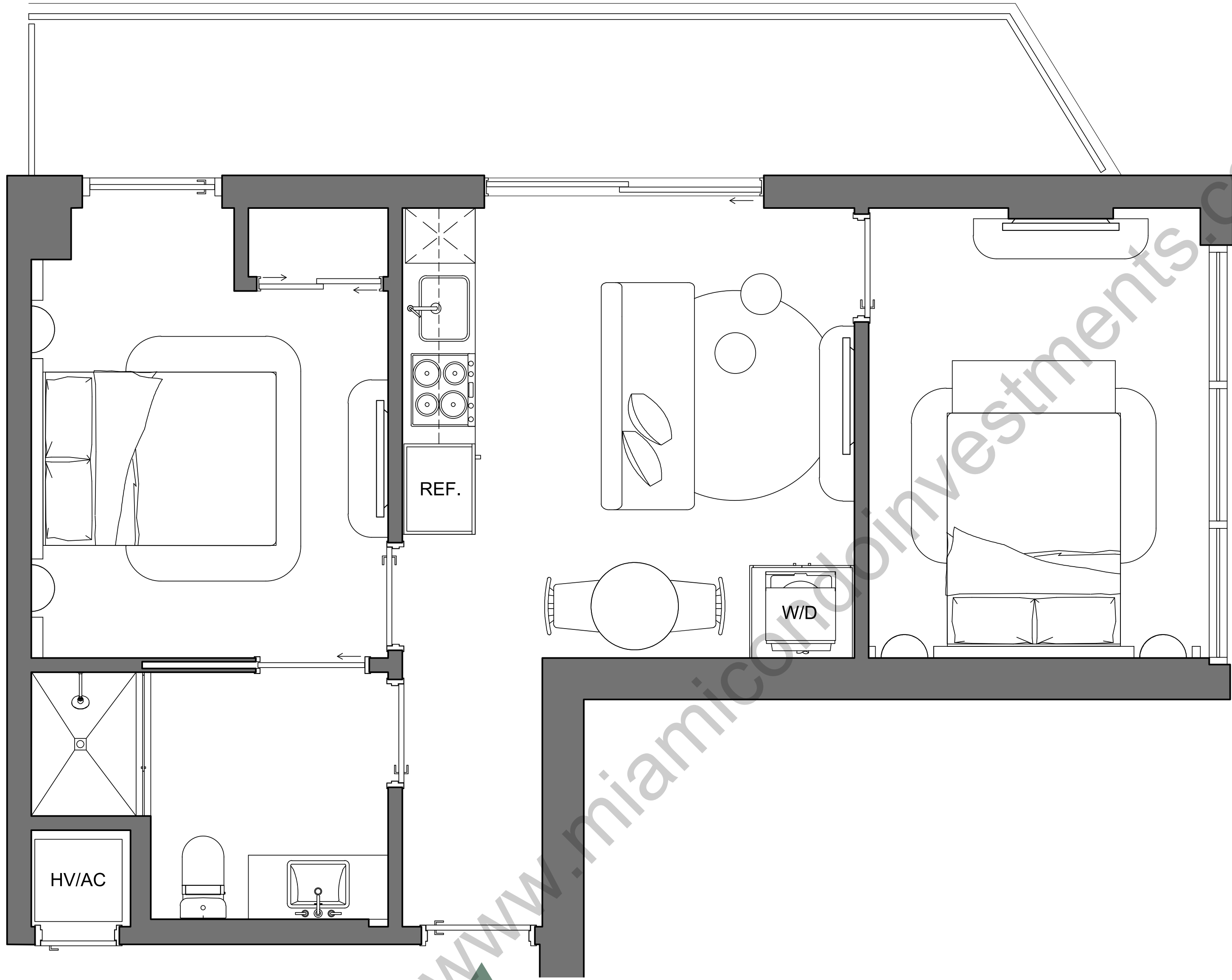
FLOORPLANS + KEYPLANS



RESIDENTIAL KEYPLAN

9 **1 Bedroom Residences**
405-573 SF

3 **2 Bedroom Residences**
620-889 SF



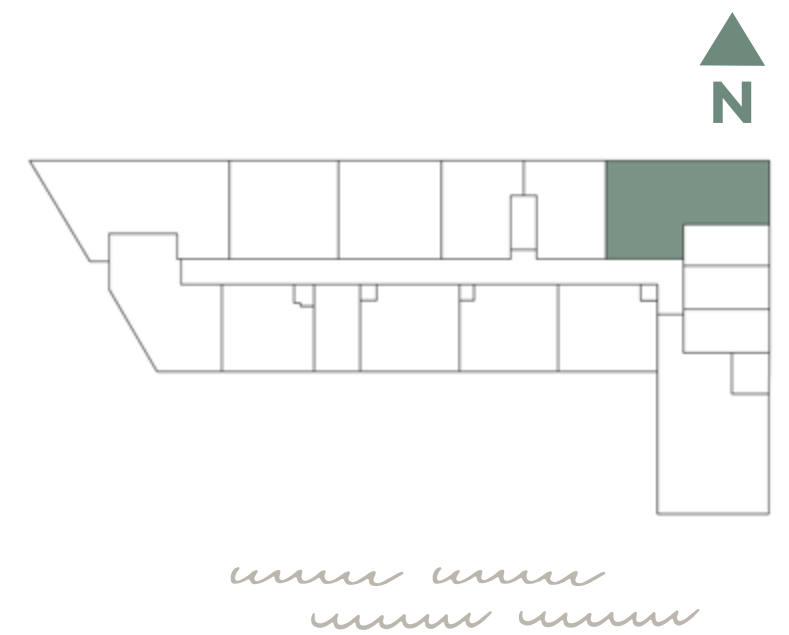
PALMA

MIAMI BEACH RESIDENCES

A5/01

TWO BED / ONE BATH

INTERIOR	620 SQFT 58 M2
EXTERIOR	149 SQFT 14 M2
TOTAL	769 SQFT 71 M2

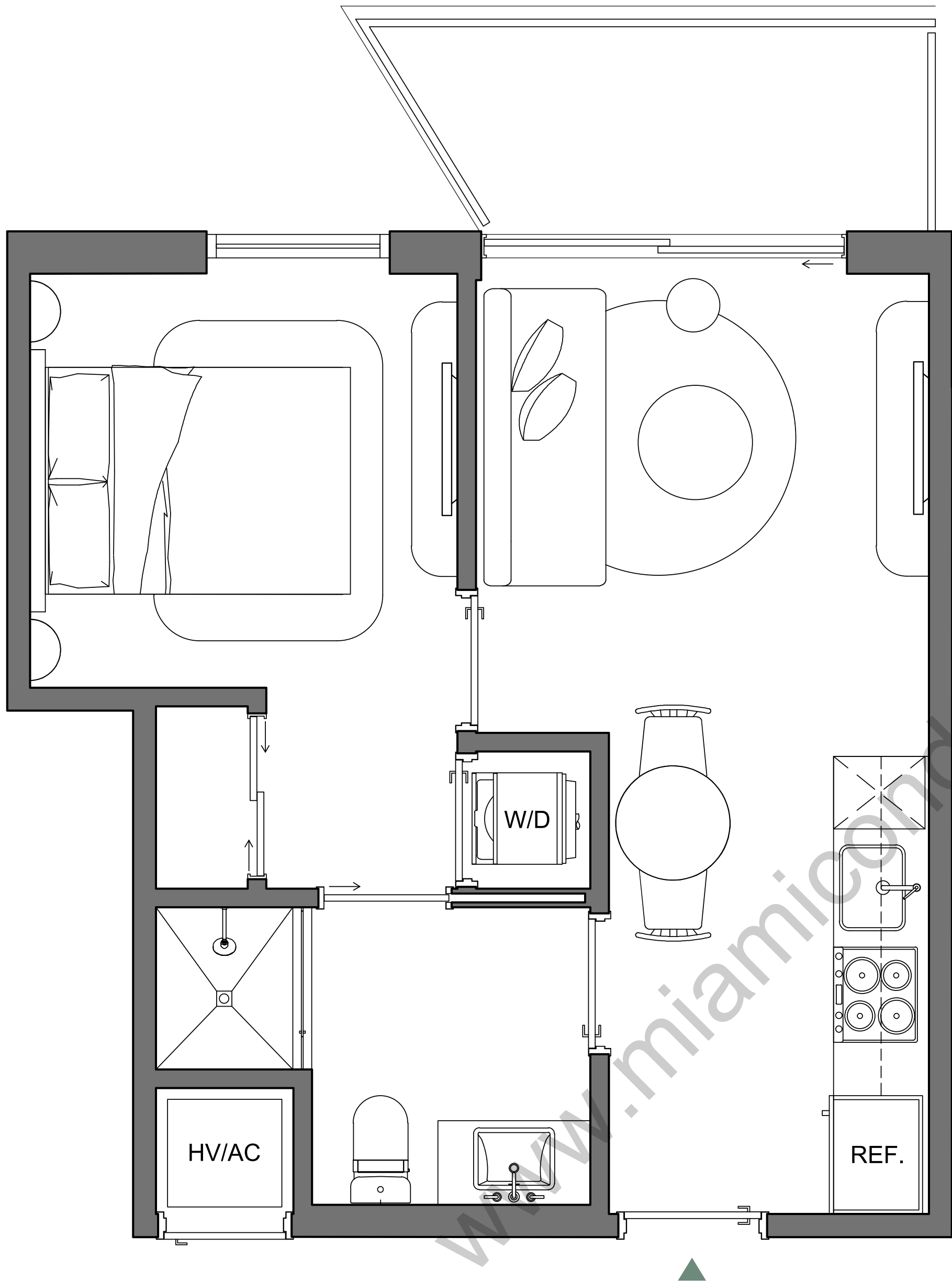


Palma Miami Beach (the "Condominium") is being developed, offered and sold by Palma Miami Beach, LLC, a Florida limited liability company (the "Developer") and not by Lefferts Investments LLC or its other affiliates ("Lefferts"). The Developer is a separate legal entity from Lefferts. Any and all statements, disclosures and/or representations shall be deemed made by Developer and not by Lefferts and you agree to look solely to the Developer (and not to Lefferts) with respect to any and all matters relating to the marketing and/or development of the Condominium and with respect to the sales of units in the Condominium. This is not intended to be an offer to sell, or solicitation to buy, condominium units to residents of any jurisdiction where prohibited by law, and your eligibility for purchase will depend upon your state of residency. This offering is made only by the prospectus for the condominium and no statement should be relied upon if not made in the prospectus.

The sketches, renderings, graphic materials, plans, specifications, terms, conditions and statements contained herein are proposed only, and the Developer reserves the right to modify, revise or withdraw any or all of same in its sole discretion and without prior notice. They should not be relied upon as representations, express or implied, of the final detail of the residences or the Condominium. All stated dimensions and ceiling heights are approximate and all floor plans and development plans are subject to change. All residence features and finishes and building amenities are subject to change, including, without limitation, changes in manufacturers, brands, amenities, services and/or the design team. The views from units at the Condominium will vary depending on the unit purchased. Any view from any unit of from other portions of the property may in the future be limited or eliminated by future development or circumstances or events beyond our control, and the Developer in no manner guarantees the continuing existence of any view. Short term rental of units require each owner to obtain a certificate of use from the applicable governing agency and are otherwise subject to issuance at the discretion of the City of Miami Beach and applicable laws. While short term rentals are permitted as of the date hereof, there is no guarantee that this will always be the case. The project graphics, renderings and text provided herein are copyrighted works owned by the Developer. © 2023 Palma Miami Beach LLC or © 2023 Lefferts Investments LLC, or their respective affiliates or licensors. All rights reserved. Unauthorized reproduction, display or other dissemination of such materials is strictly prohibited and constitutes copyright infringement. No real estate broker is authorized to make any representations or other statements regarding the Condominium, and no agreements with, deposits paid to or other arrangements made with any real estate broker are or shall be binding on the Developer.



LEFFERTS



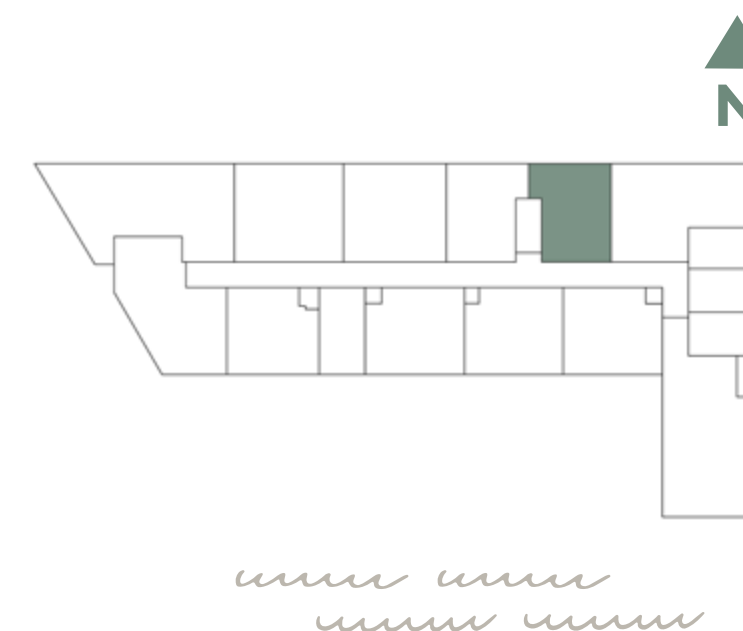
PALMA

MIAMI BEACH RESIDENCES

A7/03

ONE BED / ONE BATH

INTERIOR	410 SQFT 38 M2
EXTERIOR	58 SQFT 5 M2
TOTAL	468 SQFT 43 M2

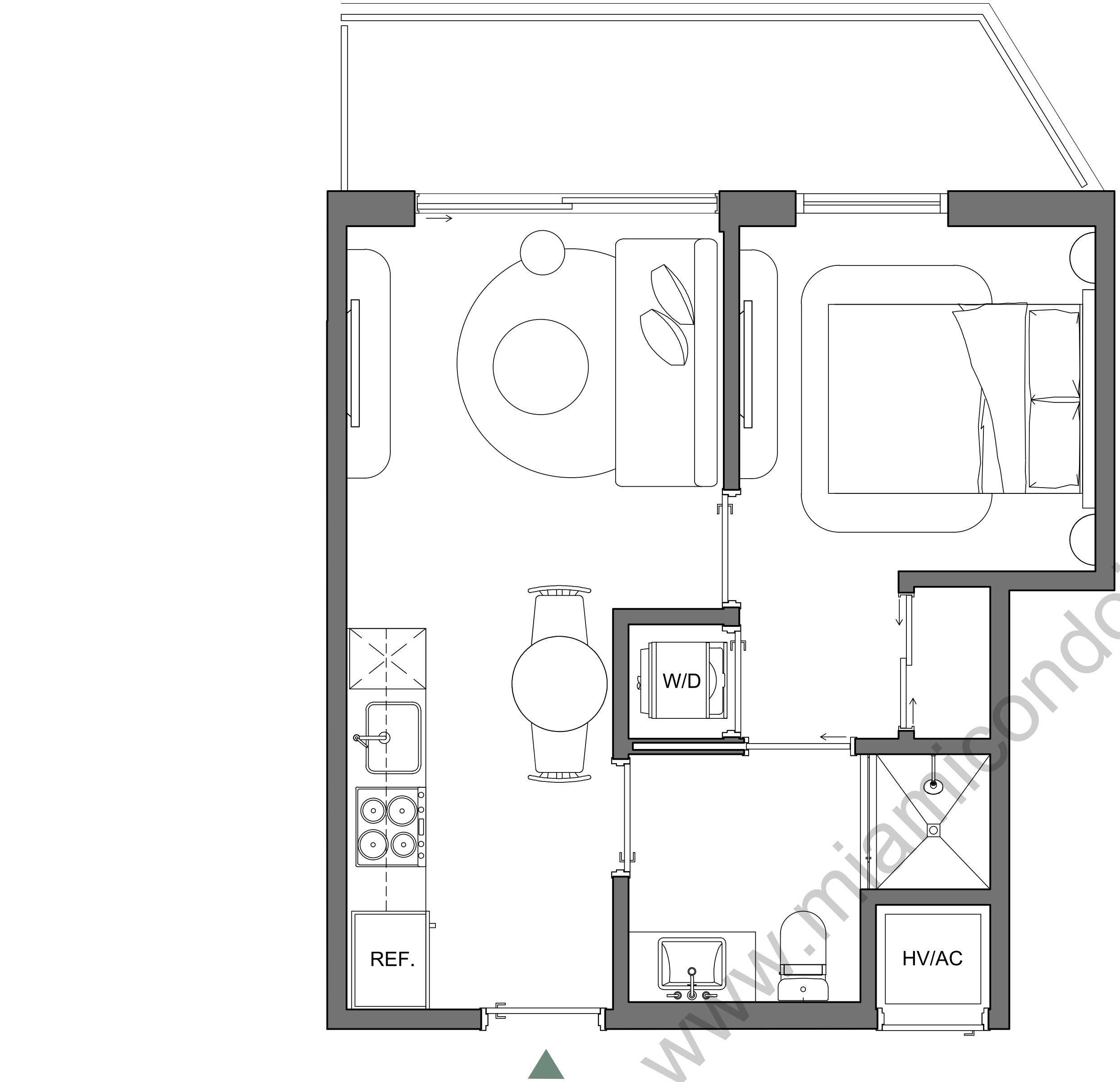


Palma Miami Beach (the "Condominium") is being developed, offered and sold by Palma Miami Beach, LLC, a Florida limited liability company (the "Developer") and not by Lefferts Investments LLC or its other affiliates ("Lefferts"). The Developer is a separate legal entity from Lefferts. Any and all statements, disclosures and/or representations shall be deemed made by Developer and not by Lefferts and you agree to look solely to the Developer (and not to Lefferts) with respect to any and all matters relating to the marketing and/or development of the Condominium and with respect to the sales of units in the Condominium. This is not intended to be an offer to sell, or solicitation to buy, condominium units to residents of any jurisdiction where prohibited by law, and your eligibility for purchase will depend upon your state of residency. This offering is made only by the prospectus for the condominium and no statement should be relied upon if not made in the prospectus.

The sketches, renderings, graphic materials, plans, specifications, terms, conditions and statements contained herein are proposed only, and the Developer reserves the right to modify, revise or withdraw any or all of same in its sole discretion and without prior notice. They should not be relied upon as representations, express or implied, of the final detail of the residences or the Condominium. All stated dimensions and ceiling heights are approximate and all floor plans and development plans are subject to change. All residence features and finishes and building amenities are subject to change, including, without limitation, changes in manufacturers, brands, amenities, services and/or the design team. The views from units at the Condominium will vary depending on the unit purchased. Any view from any unit of from other portions of the property may in the future be limited or eliminated by future development or circumstances or events beyond our control, and the Developer in no manner guarantees the continuing existence of any view. Short term rental of units require each owner to obtain a certificate of use from the applicable governing agency and are otherwise subject to issuance at the discretion of the City of Miami Beach and applicable laws. While short term rentals are permitted as of the date hereof, there is no guarantee that this will always be the case. The project graphics, renderings and text provided herein are copyrighted works owned by the Developer. © 2023 Palma Miami Beach LLC or © 2023 Lefferts Investments LLC, or their respective affiliates or licensors. All rights reserved. Unauthorized reproduction, display or other dissemination of such materials is strictly prohibited and constitutes copyright infringement. No real estate broker is authorized to make any representations or other statements regarding the Condominium, and no agreements with, deposits paid to or other arrangements made with any real estate broker are or shall be binding on the Developer.



LEFFERTS



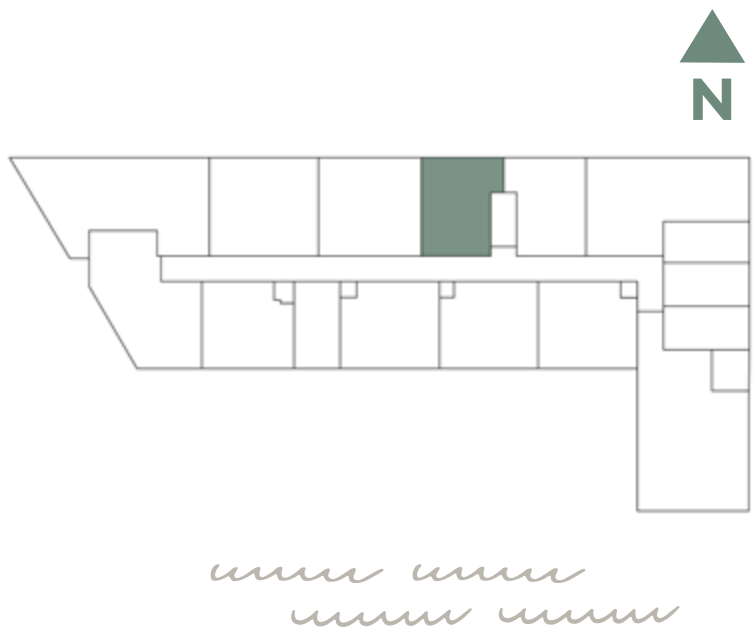
PALMA

MIAMI BEACH RESIDENCES

A7/05

ONE BED / ONE BATH

INTERIOR	405 SQFT 38 M2
EXTERIOR	90 SQFT 8 M2
TOTAL	495 SQFT 46 M2

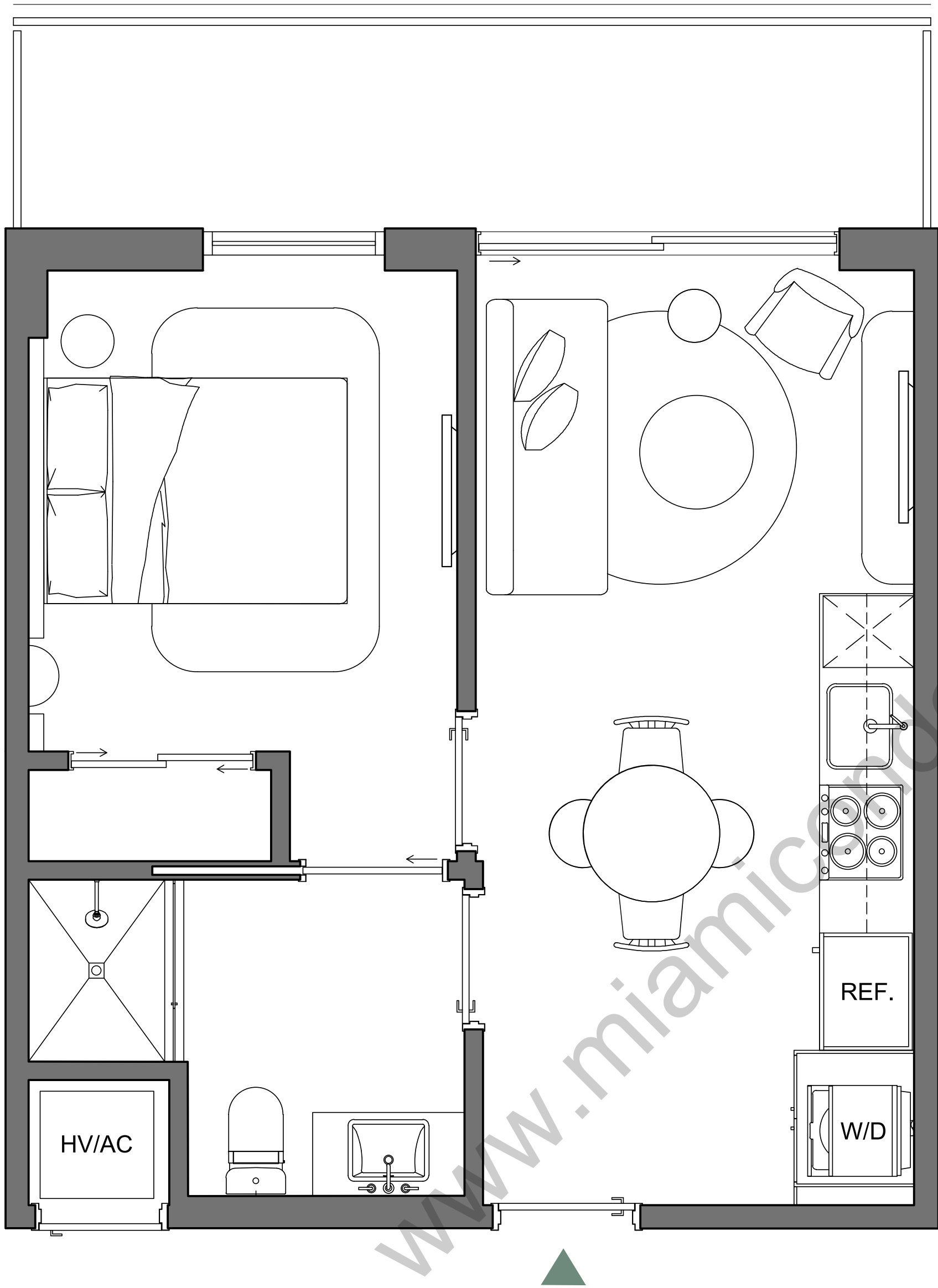


Palma Miami Beach (the "Condominium") is being developed, offered and sold by Palma Miami Beach, LLC, a Florida limited liability company (the "Developer") and not by Lefferts Investments LLC or its other affiliates ("Lefferts"). The Developer is a separate legal entity from Lefferts. Any and all statements, disclosures and/or representations shall be deemed made by Developer and not by Lefferts and you agree to look solely to the Developer (and not to Lefferts) with respect to any and all matters relating to the marketing and/or development of the Condominium and with respect to the sales of units in the Condominium. This is not intended to be an offer to sell, or solicitation to buy, condominium units to residents of any jurisdiction where prohibited by law, and your eligibility for purchase will depend upon your state of residency. This offering is made only by the prospectus for the condominium and no statement should be relied upon if not made in the prospectus.

The sketches, renderings, graphic materials, plans, specifications, terms, conditions and statements contained herein are proposed only, and the Developer reserves the right to modify, revise or withdraw any or all of same in its sole discretion and without prior notice. They should not be relied upon as representations, express or implied, of the final detail of the residences or the Condominium. All stated dimensions and ceiling heights are approximate and all floor plans and development plans are subject to change. All residence features and finishes and building amenities are subject to change, including, without limitation, changes in manufacturers, brands, amenities, services and/or the design team. The views from units at the Condominium will vary depending on the unit purchased. Any view from any unit of from other portions of the property may in the future be limited or eliminated by future development or circumstances or events beyond our control, and the Developer in no manner guarantees the continuing existence of any view. Short term rental of units require each owner to obtain a certificate of use from the applicable governing agency and are otherwise subject to issuance at the discretion of the City of Miami Beach and applicable laws. While short term rentals are permitted as of the date hereof, there is no guarantee that this will always be the case. The project graphics, renderings and text provided herein are copyrighted works owned by the Developer. © 2023 Palma Miami Beach LLC or © 2023 Lefferts Investments LLC, or their respective affiliates or licensors. All rights reserved. Unauthorized reproduction, display or other dissemination of such materials is strictly prohibited and constitutes copyright infringement. No real estate broker is authorized to make any representations or other statements regarding the Condominium, and no agreements with, deposits paid to or other arrangements made with any real estate broker are or shall be binding on the Developer.



LEFFERTS



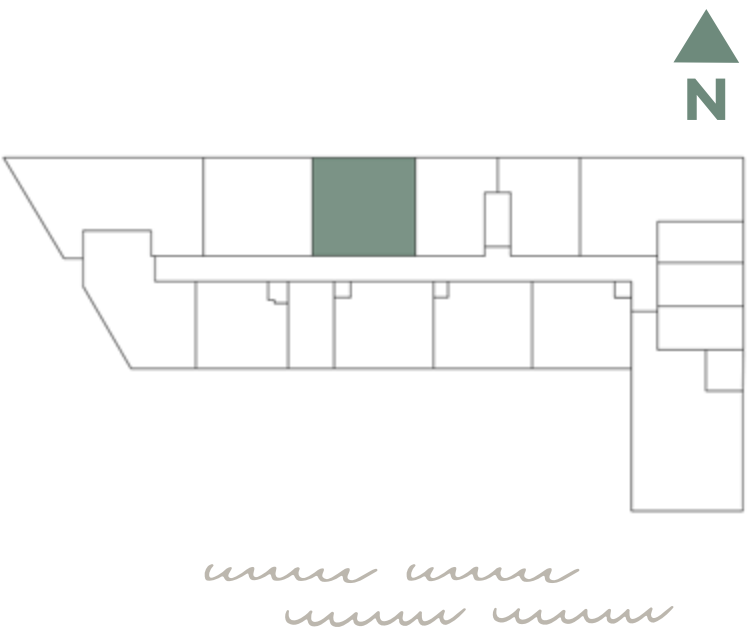
PALMA

MIAMI BEACH RESIDENCES

A6/07

ONE BED / ONE BATH

INTERIOR	442 SQFT 41 M2
EXTERIOR	99 SQFT 9 M2
TOTAL	541 SQFT 50 M2

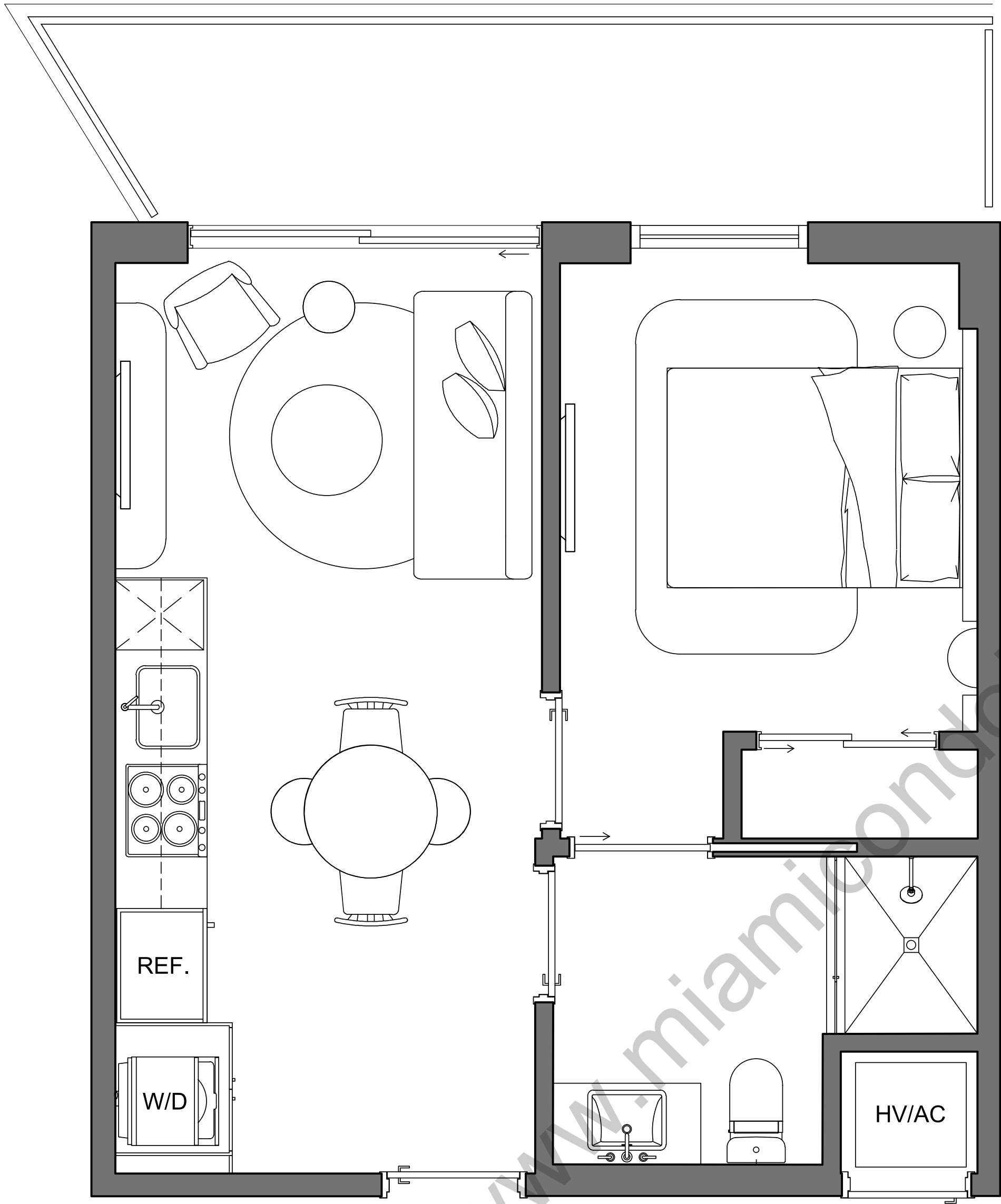


Palma Miami Beach (the "Condominium") is being developed, offered and sold by Palma Miami Beach, LLC, a Florida limited liability company (the "Developer") and not by Lefferts Investments LLC or its other affiliates ("Lefferts"). The Developer is a separate legal entity from Lefferts. Any and all statements, disclosures and/or representations shall be deemed made by Developer and not by Lefferts and you agree to look solely to the Developer (and not to Lefferts) with respect to any and all matters relating to the marketing and/or development of the Condominium and with respect to the sales of units in the Condominium. This is not intended to be an offer to sell, or solicitation to buy, condominium units to residents of any jurisdiction where prohibited by law, and your eligibility for purchase will depend upon your state of residency. This offering is made only by the prospectus for the condominium and no statement should be relied upon if not made in the prospectus.

The sketches, renderings, graphic materials, plans, specifications, terms, conditions and statements contained herein are proposed only, and the Developer reserves the right to modify, revise or withdraw any or all of same in its sole discretion and without prior notice. They should not be relied upon as representations, express or implied, of the final detail of the residences or the Condominium. All stated dimensions and ceiling heights are approximate and all floor plans and development plans are subject to change. All residence features and finishes and building amenities are subject to change, including, without limitation, changes in manufacturers, brands, amenities, services and/or the design team. The views from units at the Condominium will vary depending on the unit purchased. Any view from any unit of from other portions of the property may in the future be limited or eliminated by future development or circumstances or events beyond our control, and the Developer in no manner guarantees the continuing existence of any view. Short term rental of units require each owner to obtain a certificate of use from the applicable governing agency and are otherwise subject to issuance at the discretion of the City of Miami Beach and applicable laws. While short term rentals are permitted as of the date hereof, there is no guarantee that this will always be the case. The project graphics, renderings and text provided herein are copyrighted works owned by the Developer. © 2023 Palma Miami Beach LLC or © 2023 Lefferts Investments LLC, or their respective affiliates or licensors. All rights reserved. Unauthorized reproduction, display or other dissemination of such materials is strictly prohibited and constitutes copyright infringement. No real estate broker is authorized to make any representations or other statements regarding the Condominium, and no agreements with, deposits paid to or other arrangements made with any real estate broker are or shall be binding on the Developer.



LEFFERTS



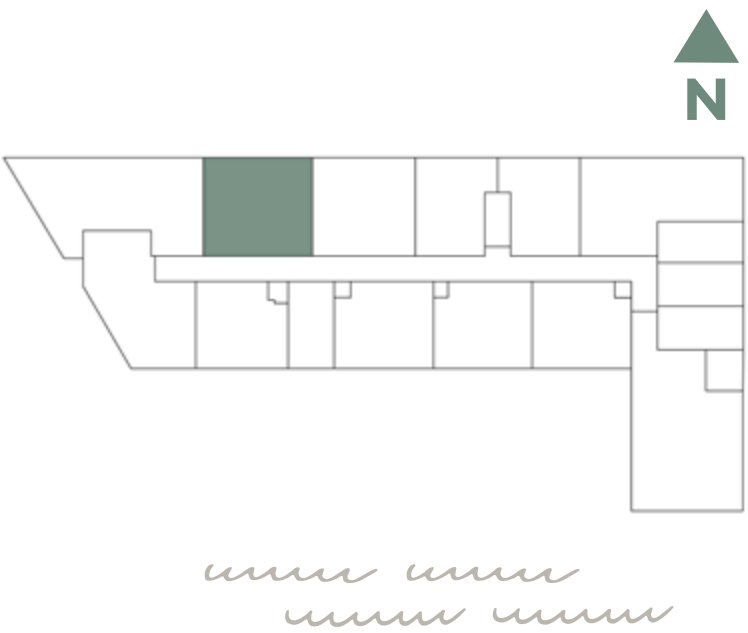
PALMA

MIAMI BEACH RESIDENCES

A6/09

ONE BED / ONE BATH

INTERIOR	440 SQFT 41 M2
EXTERIOR	102 SQFT 9 M2
TOTAL	542 SQFT 50 M2



Palma Miami Beach (the "Condominium") is being developed, offered and sold by Palma Miami Beach, LLC, a Florida limited liability company (the "Developer") and not by Lefferts Investments LLC or its other affiliates ("Lefferts"). The Developer is a separate legal entity from Lefferts. Any and all statements, disclosures and/or representations shall be deemed made by Developer and not by Lefferts and you agree to look solely to the Developer (and not to Lefferts) with respect to any and all matters relating to the marketing and/or development of the Condominium and with respect to the sales of units in the Condominium. This is not intended to be an offer to sell, or solicitation to buy, condominium units to residents of any jurisdiction where prohibited by law, and your eligibility for purchase will depend upon your state of residency. This offering is made only by the prospectus for the condominium and no statement should be relied upon if not made in the prospectus.

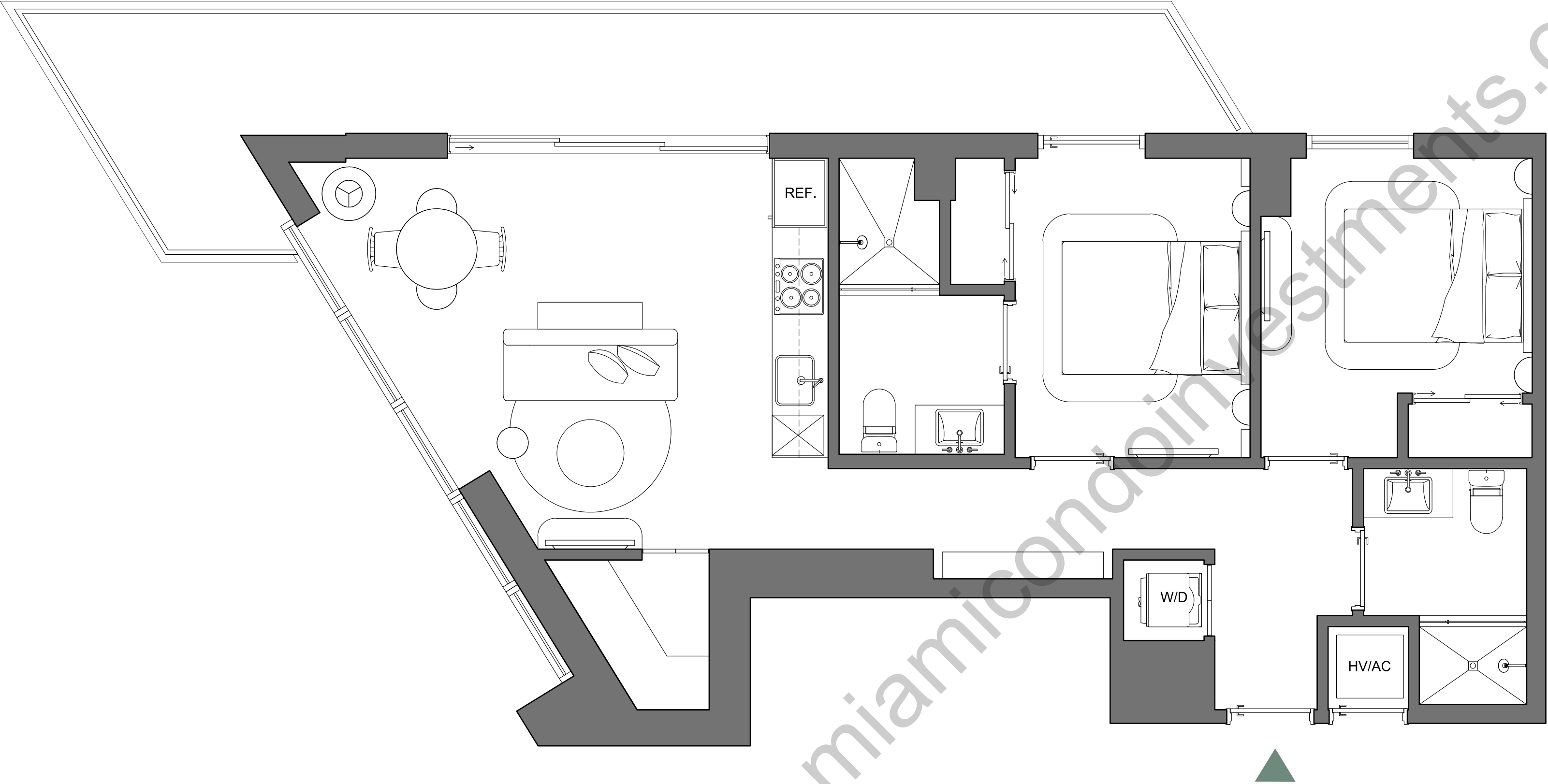
The sketches, renderings, graphic materials, plans, specifications, terms, conditions and statements contained herein are proposed only, and the Developer reserves the right to modify, revise or withdraw any or all of same in its sole discretion and without prior notice. They should not be relied upon as representations, express or implied, of the final detail of the residences or the Condominium. All stated dimensions and ceiling heights are approximate and all floor plans and development plans are subject to change. All residence features and finishes and building amenities are subject to change, including, without limitation, changes in manufacturers, brands, amenities, services and/or the design team. The views from units at the Condominium will vary depending on the unit purchased. Any view from any unit of from other portions of the property may in the future be limited or eliminated by future development or circumstances or events beyond our control, and the Developer in no manner guarantees the continuing existence of any view. Short term rental of units require each owner to obtain a certificate of use from the applicable governing agency and are otherwise subject to issuance at the discretion of the City of Miami Beach and applicable laws. While short term rentals are permitted as of the date hereof, there is no guarantee that this will always be the case. The project graphics, renderings and text provided herein are copyrighted works owned by the Developer. © 2023 Palma Miami Beach LLC or © 2023 Lefferts Investments LLC, or their respective affiliates or licensors. All rights reserved. Unauthorized reproduction, display or other dissemination of such materials is strictly prohibited and constitutes copyright infringement. No real estate broker is authorized to make any representations or other statements regarding the Condominium, and no agreements with, deposits paid to or other arrangements made with any real estate broker are or shall be binding on the Developer.



LEFFERTS

PALMA

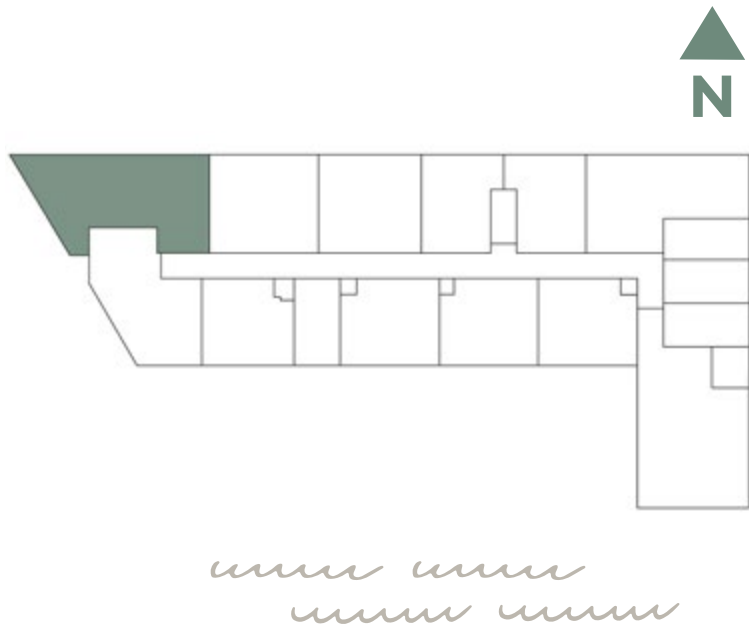
MIAMI BEACH RESIDENCES



B2/11

TWO BED / TWO BATH

INTERIOR	843 SQFT 78 M2
EXTERIOR	243 SQFT 23 M2
TOTAL	1,086 SQFT 101 M2

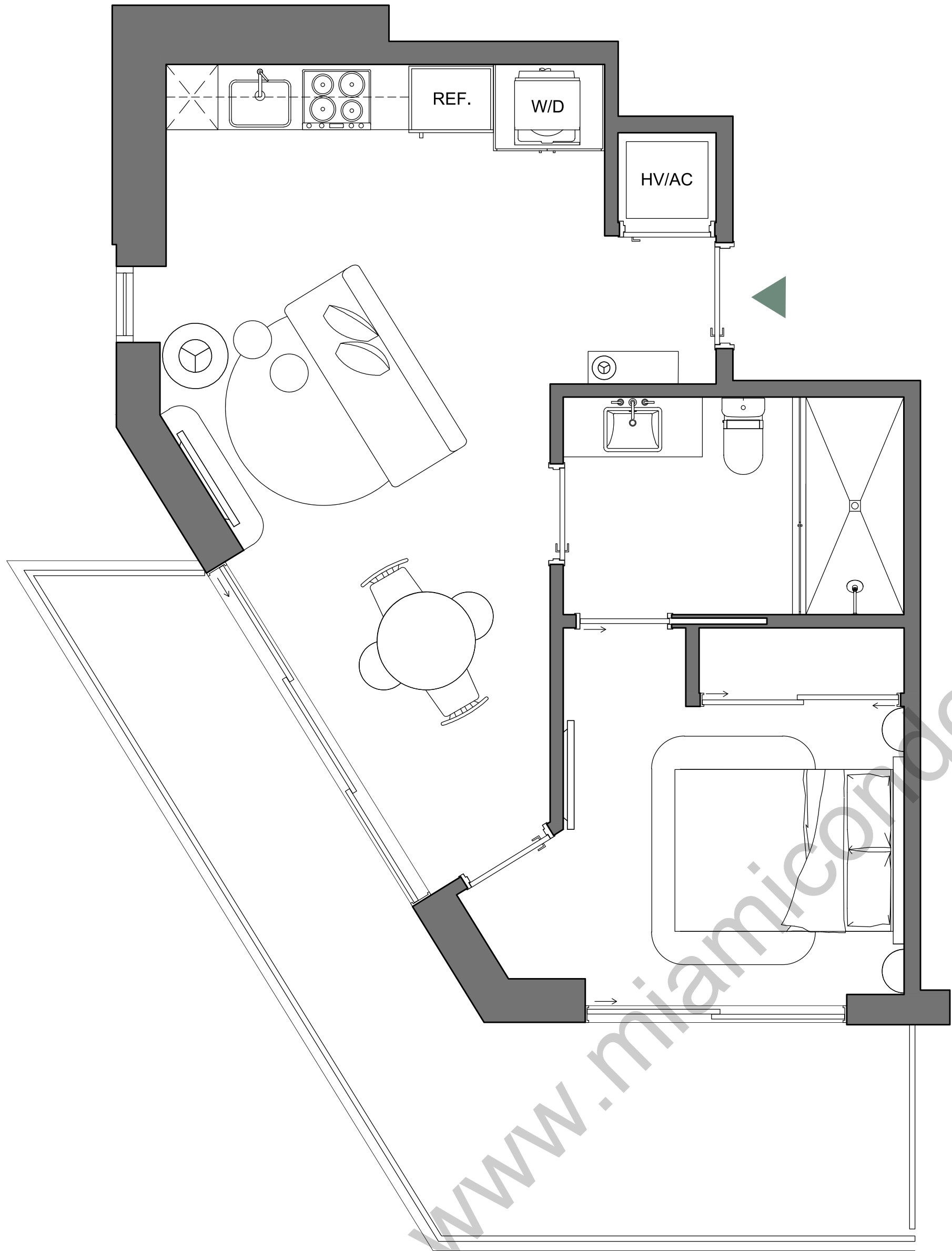


Palma Miami Beach (the "Condominium") is being developed, offered and sold by Palma Miami Beach, LLC, a Florida limited liability company (the "Developer") and not by Lefferts Investments LLC or its other affiliates ("Lefferts"). The Developer is a separate legal entity from Lefferts. Any and all statements, disclosures and/or representations shall be deemed made by Developer and not by Lefferts and you agree to look solely to the Developer (and not to Lefferts) with respect to any and all matters relating to the marketing and/or development of the Condominium and with respect to the sales of units in the Condominium. This is not intended to be an offer to sell, or solicitation to buy, condominium units to residents of any jurisdiction where prohibited by law, and your eligibility for purchase will depend upon your state of residency. This offering is made only by the prospectus for the condominium and no statement should be relied upon if not made in the prospectus.

The sketches, renderings, graphic materials, plans, specifications, terms, conditions and statements contained herein are proposed only, and the Developer reserves the right to modify, revise or withdraw any or all of same in its sole discretion and without prior notice. They should not be relied upon as representations, express or implied, of the final detail of the residences or the Condominium. All stated dimensions and ceiling heights are approximate and all floor plans and development plans are subject to change. All residence features and finishes and building amenities are subject to change, including, without limitation, changes in manufacturers, brands, amenities, services and/or the design team. The views from units at the Condominium will vary depending on the unit purchased. Any view from any unit of from other portions of the property may in the future be limited or eliminated by future development or circumstances or events beyond our control, and the Developer in no manner guarantees the continuing existence of any view. Short term rental of units require each owner to obtain a certificate of use from the applicable governing agency and are otherwise subject to issuance at the discretion of the City of Miami Beach and applicable laws. While short term rentals are permitted as of the date hereof, there is no guarantee that this will always be the case. The project graphics, renderings and text provided herein are copyrighted works owned by the Developer. © 2023 Palma Miami Beach LLC or © 2023 Lefferts Investments LLC, or their respective affiliates or licensors. All rights reserved. Unauthorized reproduction, display or other dissemination of such materials is strictly prohibited and constitutes copyright infringement. No real estate broker is authorized to make any representations or other statements regarding the Condominium, and no agreements with, deposits paid to or other arrangements made with any real estate broker are or shall be binding on the Developer.



LEFFERTS



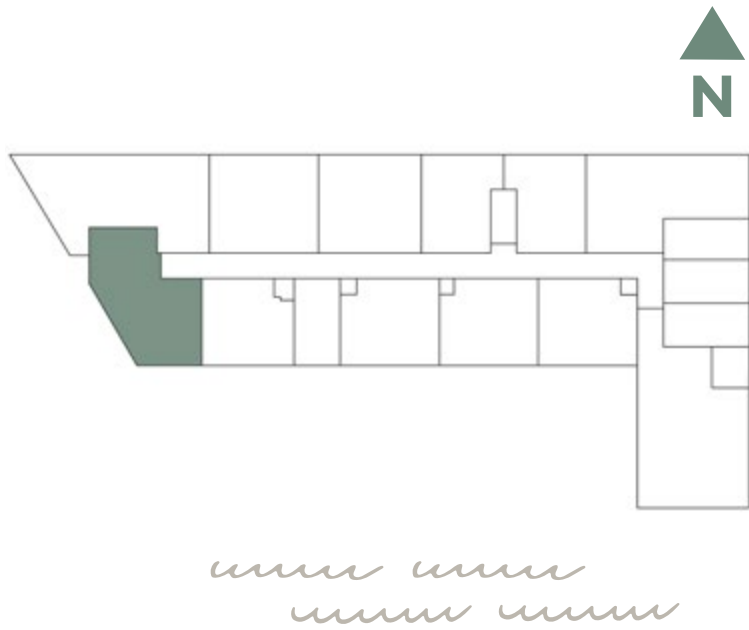
PALMA

MIAMI BEACH RESIDENCES

A4/12

ONE BED / ONE BATH

INTERIOR	558 SQFT 52 M2
EXTERIOR	201 SQFT 19 M2
TOTAL	759 SQFT 71 M2

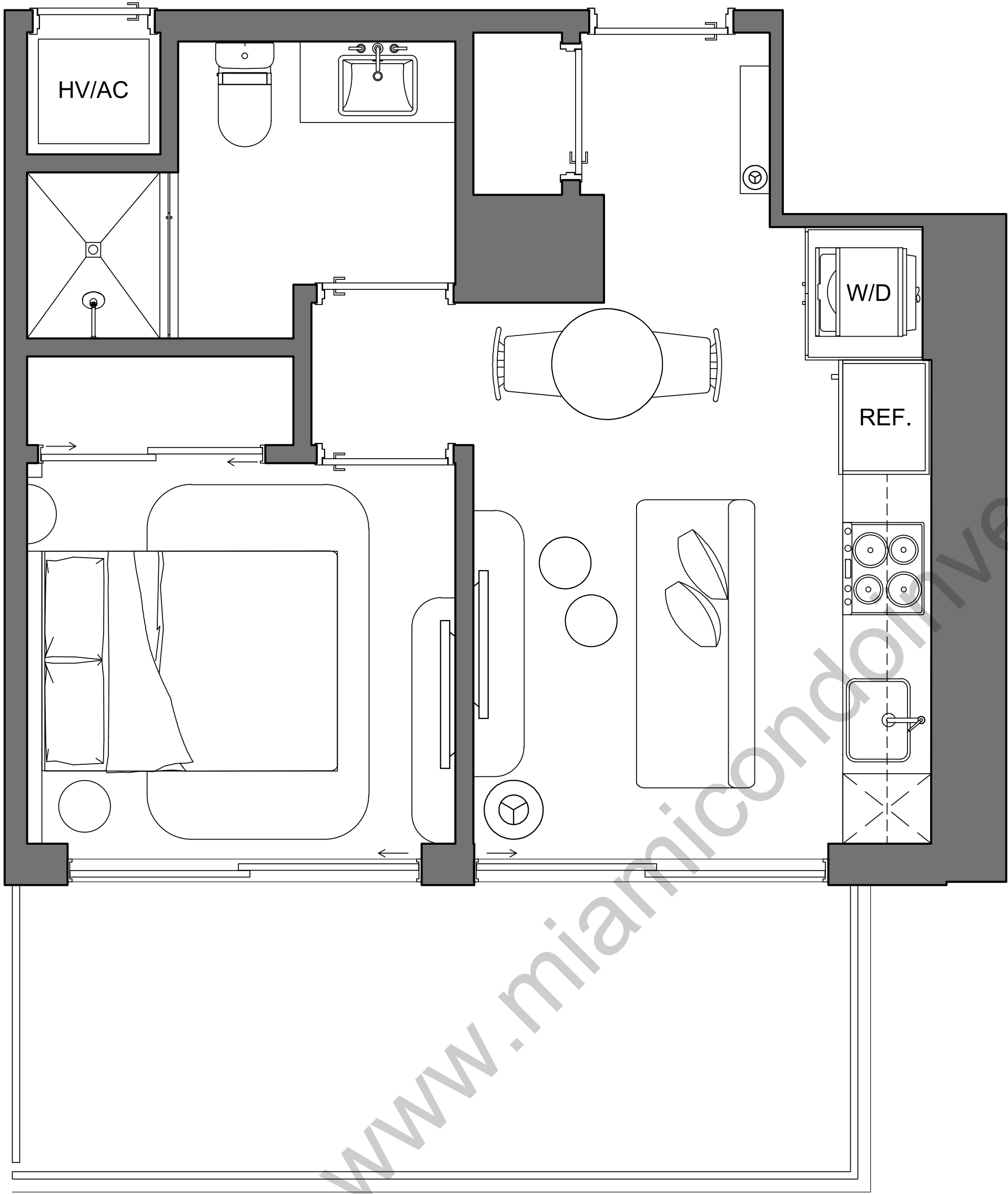


Palma Miami Beach (the "Condominium") is being developed, offered and sold by Palma Miami Beach, LLC, a Florida limited liability company (the "Developer") and not by Lefferts Investments LLC or its other affiliates ("Lefferts"). The Developer is a separate legal entity from Lefferts. Any and all statements, disclosures and/or representations shall be deemed made by Developer and not by Lefferts and you agree to look solely to the Developer (and not to Lefferts) with respect to any and all matters relating to the marketing and/or development of the Condominium and with respect to the sales of units in the Condominium. This is not intended to be an offer to sell, or solicitation to buy, condominium units to residents of any jurisdiction where prohibited by law, and your eligibility for purchase will depend upon your state of residency. This offering is made only by the prospectus for the condominium and no statement should be relied upon if not made in the prospectus.

The sketches, renderings, graphic materials, plans, specifications, terms, conditions and statements contained herein are proposed only, and the Developer reserves the right to modify, revise or withdraw any or all of same in its sole discretion and without prior notice. They should not be relied upon as representations, express or implied, of the final detail of the residences or the Condominium. All stated dimensions and ceiling heights are approximate and all floor plans and development plans are subject to change. All residence features and finishes and building amenities are subject to change, including, without limitation, changes in manufacturers, brands, amenities, services and/or the design team. The views from units at the Condominium will vary depending on the unit purchased. Any view from any unit of from other portions of the property may in the future be limited or eliminated by future development or circumstances or events beyond our control, and the Developer in no manner guarantees the continuing existence of any view. Short term rental of units require each owner to obtain a certificate of use from the applicable governing agency and are otherwise subject to issuance at the discretion of the City of Miami Beach and applicable laws. While short term rentals are permitted as of the date hereof, there is no guarantee that this will always be the case. The project graphics, renderings and text provided herein are copyrighted works owned by the Developer. © 2023 Palma Miami Beach LLC or © 2023 Lefferts Investments LLC, or their respective affiliates or licensors. All rights reserved. Unauthorized reproduction, display or other dissemination of such materials is strictly prohibited and constitutes copyright infringement. No real estate broker is authorized to make any representations or other statements regarding the Condominium, and no agreements with, deposits paid to or other arrangements made with any real estate broker are or shall be binding on the Developer.



LEFFERTS



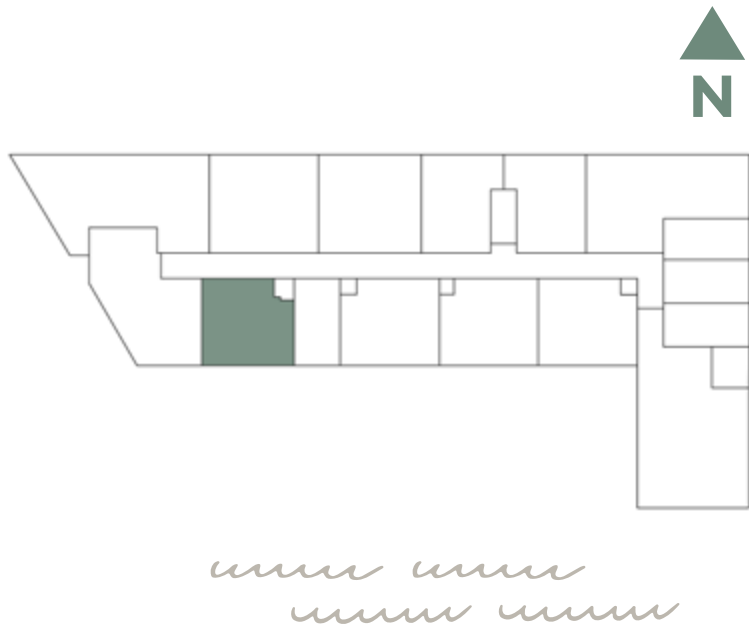
PALMA

MIAMI BEACH RESIDENCES

A10/10

ONE BED / ONE BATH

INTERIOR	426 SQFT 40 M2
EXTERIOR	135 SQFT 12 M2
TOTAL	561 SQFT 52 M2

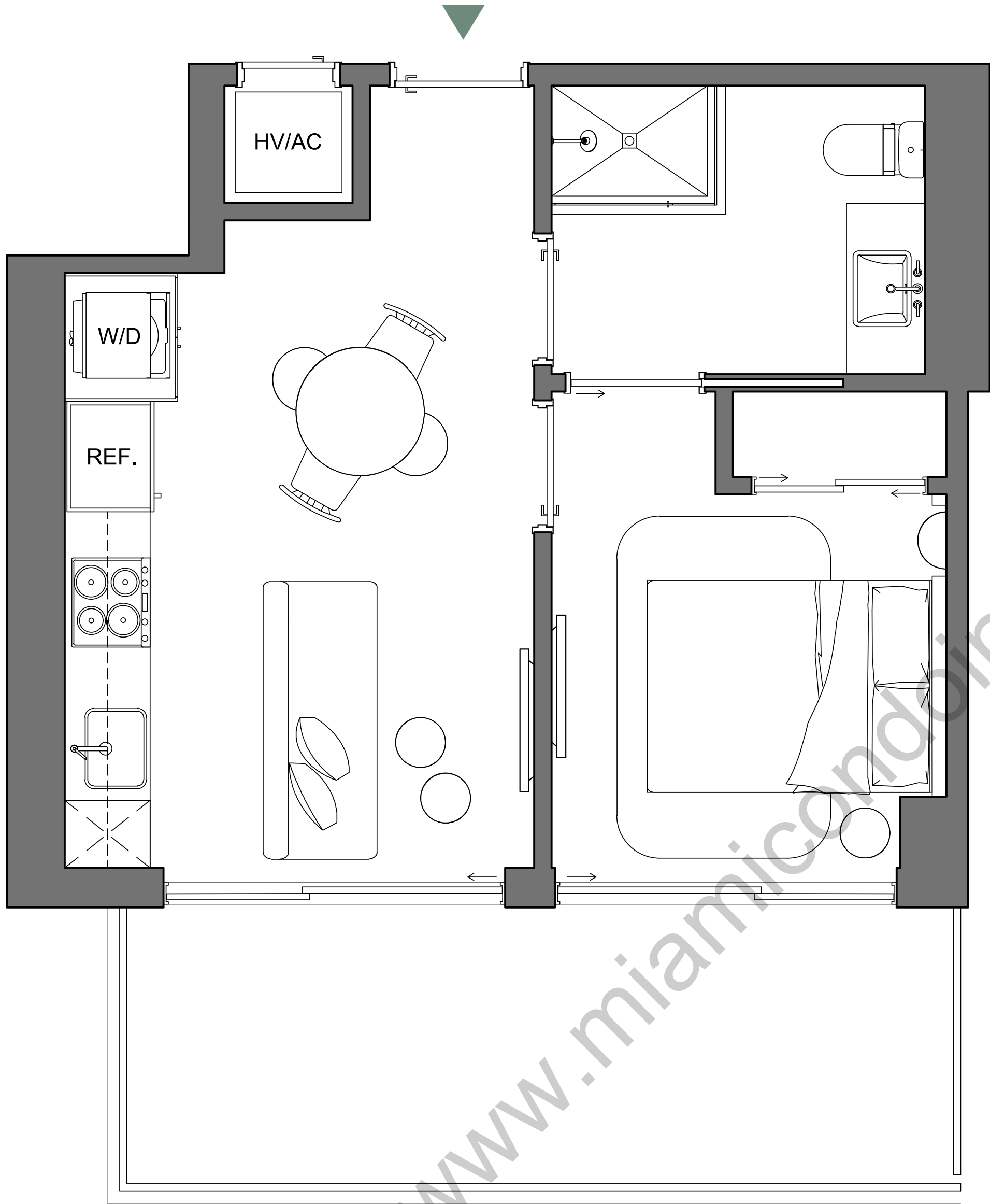


Palma Miami Beach (the "Condominium") is being developed, offered and sold by Palma Miami Beach, LLC, a Florida limited liability company (the "Developer") and not by Lefferts Investments LLC or its other affiliates ("Lefferts"). The Developer is a separate legal entity from Lefferts. Any and all statements, disclosures and/or representations shall be deemed made by Developer and not by Lefferts and you agree to look solely to the Developer (and not to Lefferts) with respect to any and all matters relating to the marketing and/or development of the Condominium and with respect to the sales of units in the Condominium. This is not intended to be an offer to sell, or solicitation to buy, condominium units to residents of any jurisdiction where prohibited by law, and your eligibility for purchase will depend upon your state of residency. This offering is made only by the prospectus for the condominium and no statement should be relied upon if not made in the prospectus.

The sketches, renderings, graphic materials, plans, specifications, terms, conditions and statements contained herein are proposed only, and the Developer reserves the right to modify, revise or withdraw any or all of same in its sole discretion and without prior notice. They should not be relied upon as representations, express or implied, of the final detail of the residences or the Condominium. All stated dimensions and ceiling heights are approximate and all floor plans and development plans are subject to change. All residence features and finishes and building amenities are subject to change, including, without limitation, changes in manufacturers, brands, amenities, services and/or the design team. The views from units at the Condominium will vary depending on the unit purchased. Any view from any unit of from other portions of the property may in the future be limited or eliminated by future development or circumstances or events beyond our control, and the Developer in no manner guarantees the continuing existence of any view. Short term rental of units require each owner to obtain a certificate of use from the applicable governing agency and are otherwise subject to issuance at the discretion of the City of Miami Beach and applicable laws. While short term rentals are permitted as of the date hereof, there is no guarantee that this will always be the case. The project graphics, renderings and text provided herein are copyrighted works owned by the Developer. © 2023 Palma Miami Beach LLC or © 2023 Lefferts Investments LLC, or their respective affiliates or licensors. All rights reserved. Unauthorized reproduction, display or other dissemination of such materials is strictly prohibited and constitutes copyright infringement. No real estate broker is authorized to make any representations or other statements regarding the Condominium, and no agreements with, deposits paid to or other arrangements made with any real estate broker are or shall be binding on the Developer.



LEFFERTS



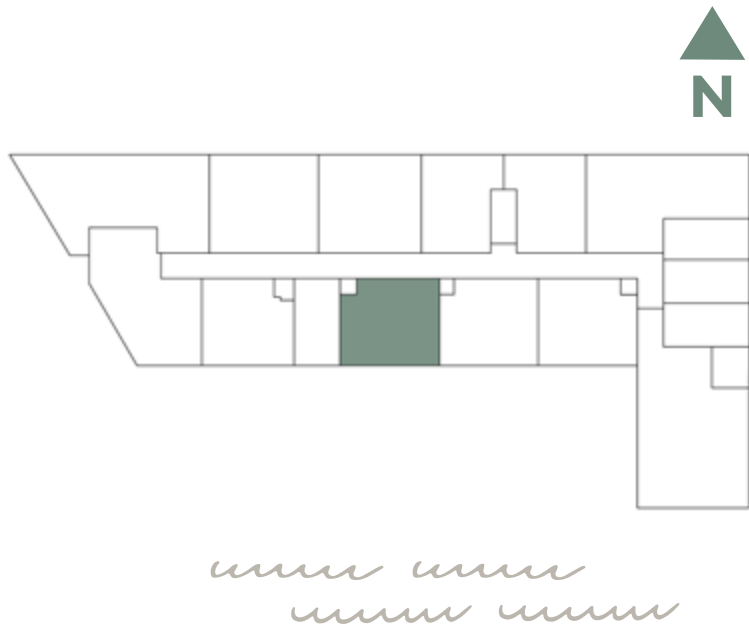
PALMA

MIAMI BEACH RESIDENCES

A1/08

ONE BED / ONE BATH

INTERIOR	408 SQFT 38 M2
EXTERIOR	140 SQFT 13 M2
TOTAL	548 SQFT 51 M2

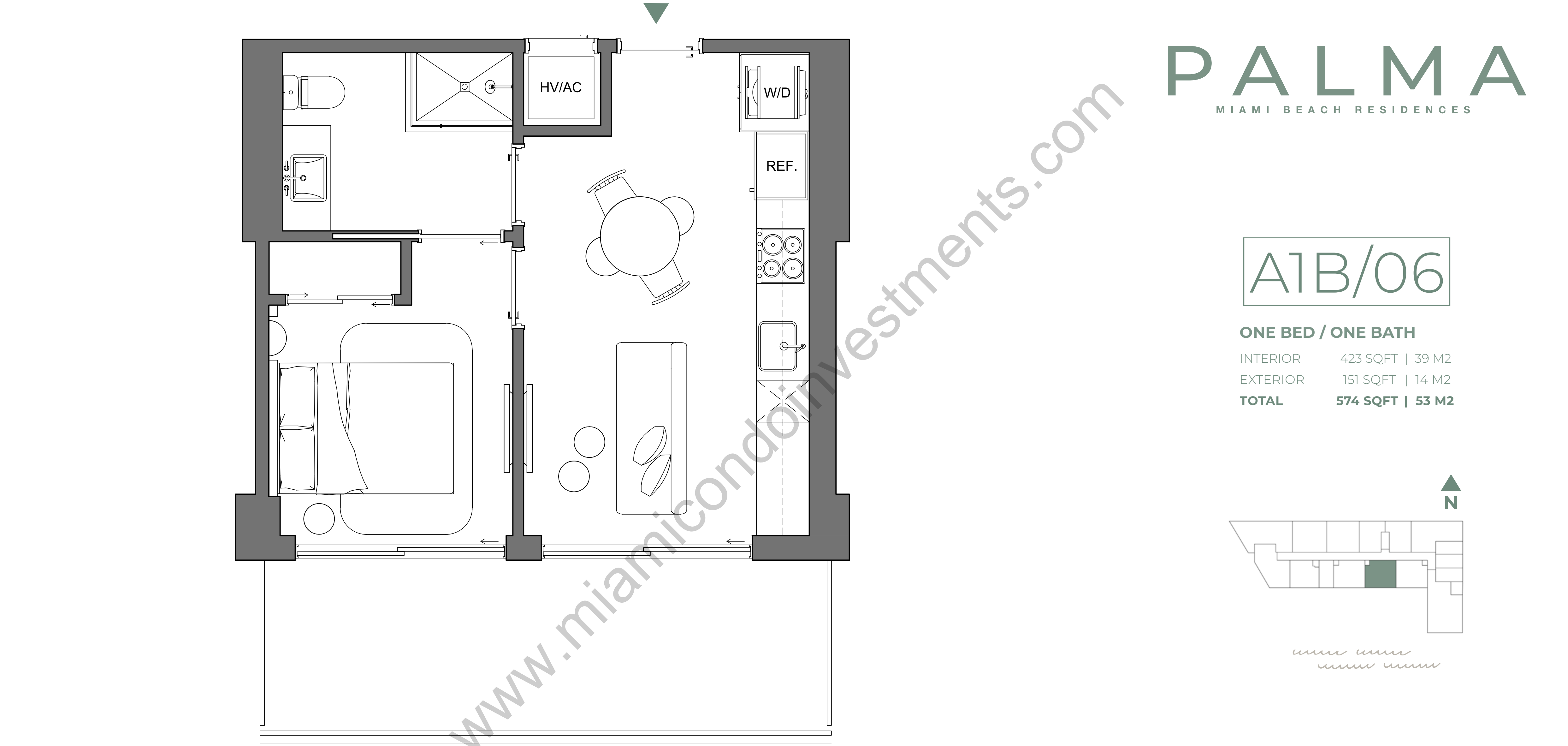


Palma Miami Beach (the "Condominium") is being developed, offered and sold by Palma Miami Beach, LLC, a Florida limited liability company (the "Developer") and not by Lefferts Investments LLC or its other affiliates ("Lefferts"). The Developer is a separate legal entity from Lefferts. Any and all statements, disclosures and/or representations shall be deemed made by Developer and not by Lefferts and you agree to look solely to the Developer (and not to Lefferts) with respect to any and all matters relating to the marketing and/or development of the Condominium and with respect to the sales of units in the Condominium. This is not intended to be an offer to sell, or solicitation to buy, condominium units to residents of any jurisdiction where prohibited by law, and your eligibility for purchase will depend upon your state of residency. This offering is made only by the prospectus for the condominium and no statement should be relied upon if not made in the prospectus.

The sketches, renderings, graphic materials, plans, specifications, terms, conditions and statements contained herein are proposed only, and the Developer reserves the right to modify, revise or withdraw any or all of same in its sole discretion and without prior notice. They should not be relied upon as representations, express or implied, of the final detail of the residences or the Condominium. All stated dimensions and ceiling heights are approximate and all floor plans and development plans are subject to change. All residence features and finishes and building amenities are subject to change, including, without limitation, changes in manufacturers, brands, amenities, services and/or the design team. The views from units at the Condominium will vary depending on the unit purchased. Any view from any unit of from other portions of the property may in the future be limited or eliminated by future development or circumstances or events beyond our control, and the Developer in no manner guarantees the continuing existence of any view. Short term rental of units require each owner to obtain a certificate of use from the applicable governing agency and are otherwise subject to issuance at the discretion of the City of Miami Beach and applicable laws. While short term rentals are permitted as of the date hereof, there is no guarantee that this will always be the case. The project graphics, renderings and text provided herein are copyrighted works owned by the Developer. © 2023 Palma Miami Beach LLC or © 2023 Lefferts Investments LLC, or their respective affiliates or licensors. All rights reserved. Unauthorized reproduction, display or other dissemination of such materials is strictly prohibited and constitutes copyright infringement. No real estate broker is authorized to make any representations or other statements regarding the Condominium, and no agreements with, deposits paid to or other arrangements made with any real estate broker are or shall be binding on the Developer.



LEFFERTS



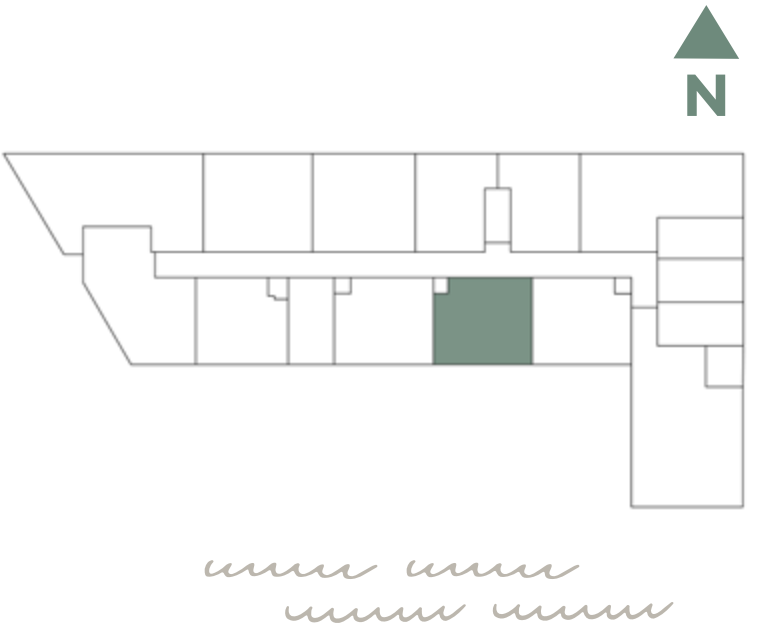
PALMA

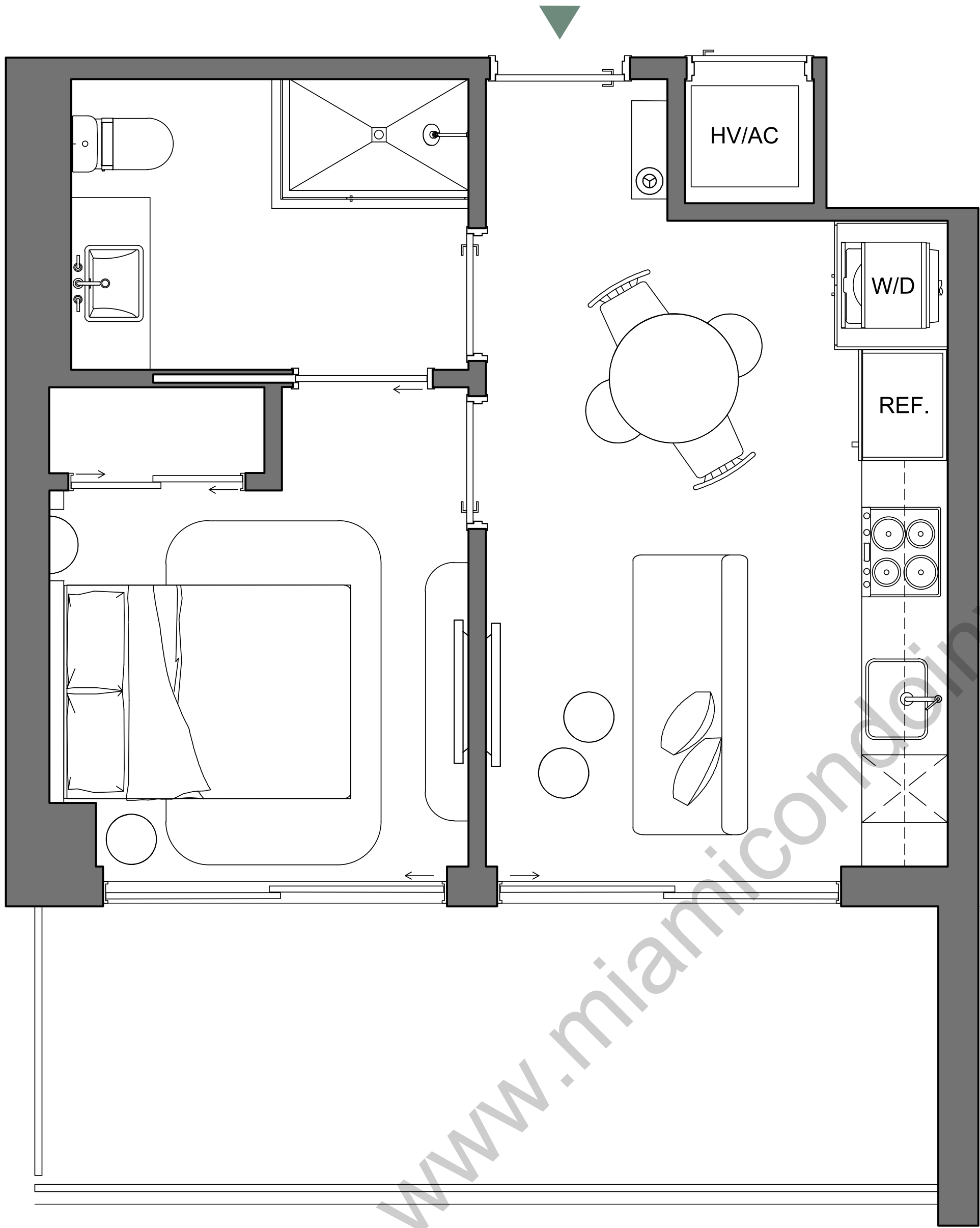
MIAMI BEACH RESIDENCES

A1B/06

ONE BED / ONE BATH

INTERIOR	423 SQFT 39 M2
EXTERIOR	151 SQFT 14 M2
TOTAL	574 SQFT 53 M2





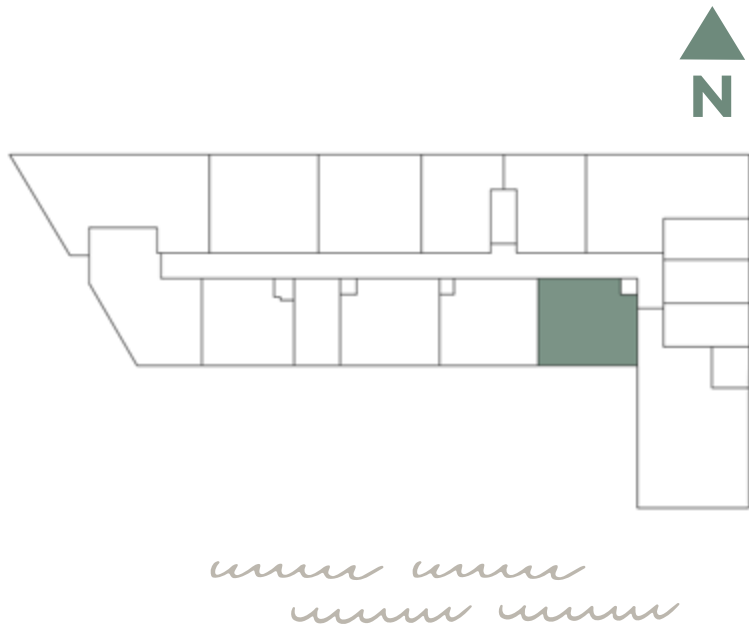
PALMA

MIAMI BEACH RESIDENCES

A1C/04

ONE BED / ONE BATH

INTERIOR	413 SQFT 39 M2
EXTERIOR	150 SQFT 14 M2
TOTAL	563 SQFT 52 M2

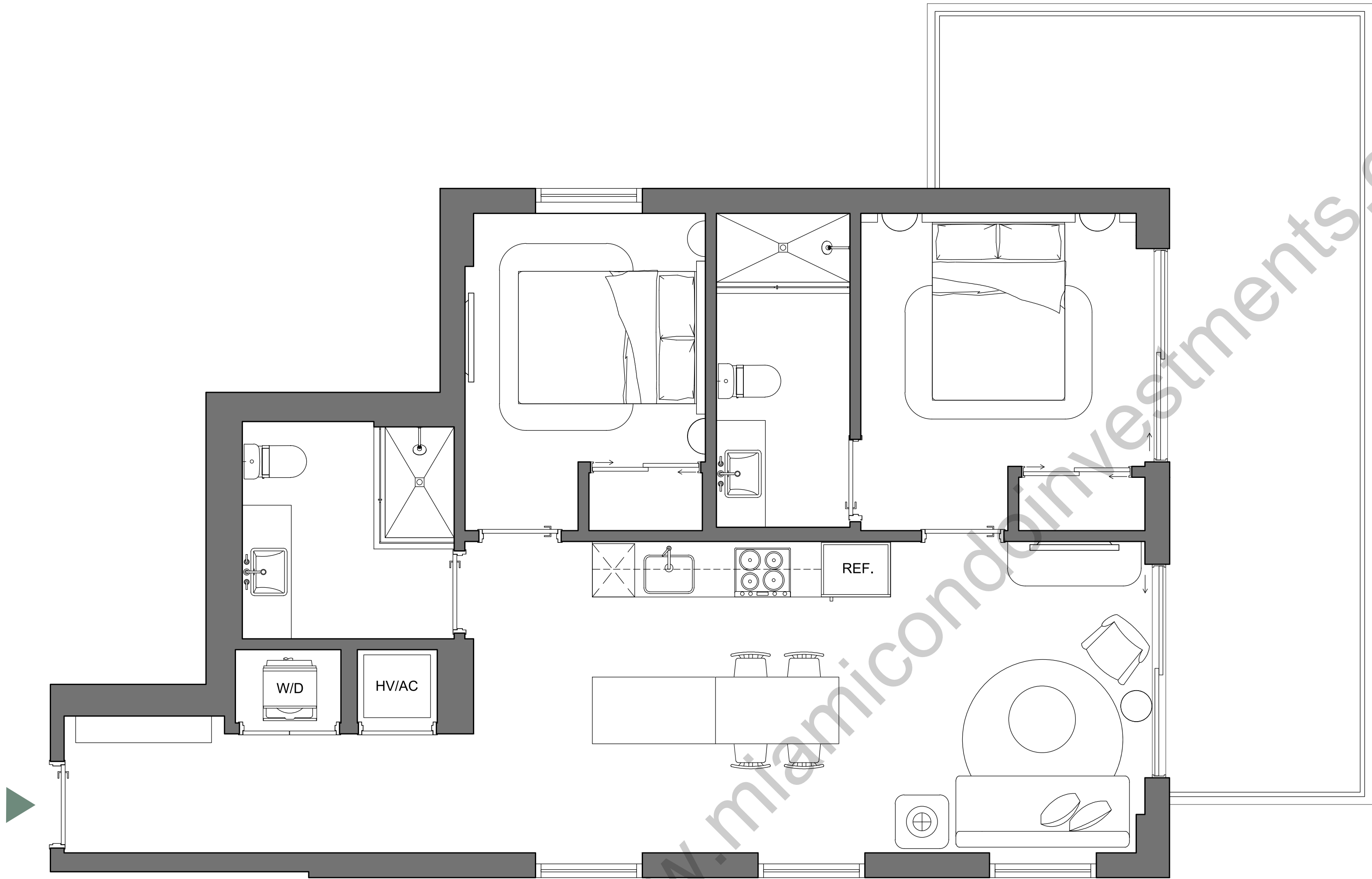


Palma Miami Beach (the "Condominium") is being developed, offered and sold by Palma Miami Beach, LLC, a Florida limited liability company (the "Developer") and not by Lefferts Investments LLC or its other affiliates ("Lefferts"). The Developer is a separate legal entity from Lefferts. Any and all statements, disclosures and/or representations shall be deemed made by Developer and not by Lefferts and you agree to look solely to the Developer (and not to Lefferts) with respect to any and all matters relating to the marketing and/or development of the Condominium and with respect to the sales of units in the Condominium. This is not intended to be an offer to sell, or solicitation to buy, condominium units to residents of any jurisdiction where prohibited by law, and your eligibility for purchase will depend upon your state of residency. This offering is made only by the prospectus for the condominium and no statement should be relied upon if not made in the prospectus.

The sketches, renderings, graphic materials, plans, specifications, terms, conditions and statements contained herein are proposed only, and the Developer reserves the right to modify, revise or withdraw any or all of same in its sole discretion and without prior notice. They should not be relied upon as representations, express or implied, of the final detail of the residences or the Condominium. All stated dimensions and ceiling heights are approximate and all floor plans and development plans are subject to change. All residence features and finishes and building amenities are subject to change, including, without limitation, changes in manufacturers, brands, amenities, services and/or the design team. The views from units at the Condominium will vary depending on the unit purchased. Any view from any unit of from other portions of the property may in the future be limited or eliminated by future development or circumstances or events beyond our control, and the Developer in no manner guarantees the continuing existence of any view. Short term rental of units require each owner to obtain a certificate of use from the applicable governing agency and are otherwise subject to issuance at the discretion of the City of Miami Beach and applicable laws. While short term rentals are permitted as of the date hereof, there is no guarantee that this will always be the case. The project graphics, renderings and text provided herein are copyrighted works owned by the Developer. © 2023 Palma Miami Beach LLC or © 2023 Lefferts Investments LLC, or their respective affiliates or licensors. All rights reserved. Unauthorized reproduction, display or other dissemination of such materials is strictly prohibited and constitutes copyright infringement. No real estate broker is authorized to make any representations or other statements regarding the Condominium, and no agreements with, deposits paid to or other arrangements made with any real estate broker are or shall be binding on the Developer.



LEFFERTS



PALMA

MIAMI BEACH RESIDENCES

B1/02

TWO BED / TWO BATH

INTERIOR	889 SQFT 83 M2
EXTERIOR	291 SQFT 27 M2
TOTAL	1,180 SQFT 110 M2



Palma Miami Beach (the "Condominium") is being developed, offered and sold by Palma Miami Beach, LLC, a Florida limited liability company (the "Developer") and not by Lefferts Investments LLC or its other affiliates ("Lefferts"). The Developer is a separate legal entity from Lefferts. Any and all statements, disclosures and/or representations shall be deemed made by Developer and not by Lefferts and you agree to look solely to the Developer (and not to Lefferts) with respect to any and all matters relating to the marketing and/or development of the Condominium and with respect to the sales of units in the Condominium. This is not intended to be an offer to sell, or solicitation to buy, condominium units to residents of any jurisdiction where prohibited by law, and your eligibility for purchase will depend upon your state of residency. This offering is made only by the prospectus for the condominium and no statement should be relied upon if not made in the prospectus.

The sketches, renderings, graphic materials, plans, specifications, terms, conditions and statements contained herein are proposed only, and the Developer reserves the right to modify, revise or withdraw any or all of same in its sole discretion and without prior notice. They should not be relied upon as representations, express or implied, of the final detail of the residences or the Condominium. All stated dimensions and ceiling heights are approximate and all floor plans and development plans are subject to change. All residence features and finishes and building amenities are subject to change, including, without limitation, changes in manufacturers, brands, amenities, services and/or the design team. The views from units at the Condominium will vary depending on the unit purchased. Any view from any unit of from other portions of the property may in the future be limited or eliminated by future development or circumstances or events beyond our control, and the Developer in no manner guarantees the continuing existence of any view. Short term rental of units require each owner to obtain a certificate of use from the applicable governing agency and are otherwise subject to issuance at the discretion of the City of Miami Beach and applicable laws. While short term rentals are permitted as of the date hereof, there is no guarantee that this will always be the case. The project graphics, renderings and text provided herein are copyrighted works owned by the Developer. © 2023 Palma Miami Beach LLC or © 2023 Lefferts Investments LLC, or their respective affiliates or licensors. All rights reserved. Unauthorized reproduction, display or other dissemination of such materials is strictly prohibited and constitutes copyright infringement. No real estate broker is authorized to make any representations or other statements regarding the Condominium, and no agreements with, deposits paid to or other arrangements made with any real estate broker are or shall be binding on the Developer.



LEFFERTS

THE TEAM

DEVELOPER | **LEFFERTS**

Lefferts is an unrivaled force in the realm of privately owned real estate development in New York and South Florida. Established in the vibrant landscape of New York City, Lefferts emerges as a preeminent force in the domain of privately owned real estate development, boasting a rich legacy spanning over two decades. With a steadfast dedication to excellence and sustainability, Lefferts crafts exceptional residential and commercial properties that transcend conventional boundaries, embodying innovation, quality, and inclusivity.

ARCHITECT | **BUILT FORM**

Built Form provides uncompromising residential design that graces the skylines of many great cities and feature interior residences that are a perfect blend of both form and function.

INTERIOR DESIGN | **STUDIO RAMIREZ**

Studio Ramirez defines a new era of luxury interiors with their fresh iteration of a 20+ year history in interior design. The studio's growing portfolio is a tribute to their ability to welcome design challenges and create poignant solutions.

LANDSCAPE ARCHITECT | **KEITH**

For more than six decades, KEITH has been providing design solutions throughout the State of Florida and the Caribbean creating tropical oasis' and lush gardens that are both elegant and inviting.

SALES & MARKETING | **ONELAND PROPERTIES**

With over 20 years of experience, OneWorld Properties is an international leader in luxury real estate marketing and sales reaching markets in Asia, Europe, North America and South America.





PALMA

MIAMI BEACH RESIDENCES



ORAL REPRESENTATIONS CANNOT BE RELIED UPON AS CORRECTLY STATING THE REPRESENTATIONS OF THE DEVELOPER. FOR CORRECT REPRESENTATIONS, MAKE REFERENCE TO THIS BROCHURE AND TO THE DOCUMENTS REQUIRED BY SECTION 718.503, FLORIDA STATUTES, TO BE FURNISHED BY A DEVELOPER TO A BUYER OR LESSEE.



LEFFERTS

Palma Miami Beach (the "Condominium") is being developed, offered and sold by Palma Miami Beach, LLC, a Florida limited liability company (the "Developer") and not by Lefferts Investments LLC or its other affiliates ("Lefferts"). The Developer is a separate legal entity from Lefferts. Any and all statements, disclosures and/or representations shall be deemed made by Developer and not by Lefferts and you agree to look solely to the Developer (and not to Lefferts) with respect to any and all matters relating to the marketing and/or development of the Condominium and with respect to the sales of units in the Condominium. This is not intended to be an offer to sell, or solicitation to buy, condominium units to residents of any jurisdiction where prohibited by law, and your eligibility for purchase will depend upon your state of residency. This offering is made only by the prospectus for the condominium and no statement should be relied upon if not made in the prospectus. The sketches, renderings, graphic materials, plans, specifications, terms, conditions and statements contained herein are proposed only, and the Developer reserves the right to modify, revise or withdraw any or all of same in its sole discretion and without prior notice. They should not be relied upon as representations, express or implied, of the final detail of the residences or the Condominium. All stated dimensions and ceiling heights are approximate and all floor plans and development plans are subject to change. All residence features and finishes and building amenities are subject to change, including, without limitation, changes in manufacturers, brands, amenities, services and/or the design team. The views from units at the Condominium will vary depending on the unit purchased. Any view from any unit of from other portions of the property may in the future be limited or eliminated by future development or circumstances or events beyond our control, and the Developer in no manner guarantees the continuing existence of any view. Short term rental of units require each owner to obtain a certificate of use from the applicable governing agency and are otherwise subject to issuance at the discretion of the City of Miami Beach and applicable laws. While short term rentals are permitted as of the date hereof, there is no guarantee that this will always be the case. The project graphics, renderings and text provided herein are copyrighted works owned by the Developer. © 2023 Palma Miami Beach LLC or © 2023 Lefferts Investments LLC, or their respective affiliates or licensors. All rights reserved. Unauthorized reproduction, display or other dissemination of such materials is strictly prohibited and constitutes copyright infringement. No real estate broker is authorized to make any representations or other statements regarding the Condominium, and no agreements with, deposits paid to or other arrangements made with any real estate broker are or shall be binding on the Developer.