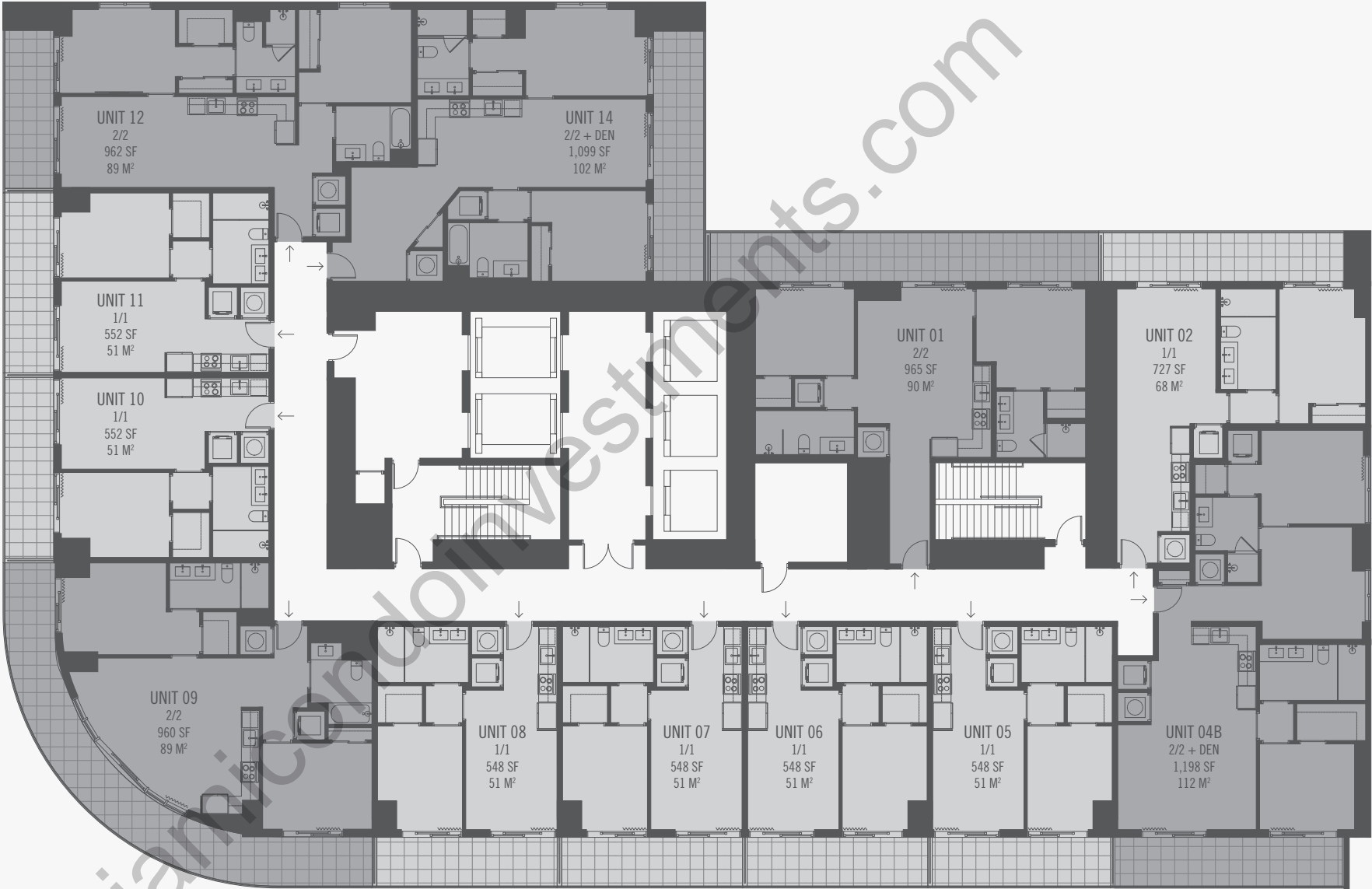


RESIDENCY
FLOOR PLAN 2

Southwest 7th Street

The Underline Park



River

Southeast 1st Avenue

ORAL REPRESENTATIONS CANNOT BE RELIED UPON AS CORRECTLY STATING THE REPRESENTATIONS OF THE DEVELOPER. FOR CORRECT REPRESENTATIONS, MAKE REFERENCE TO THIS BROCHURE AND TO THE DOCUMENTS REQUIRED BY SECTION 718.503, FLORIDA STATUTES, TO BE FURNISHED BY A DEVELOPER TO A BUYER OR LESSEE. This project is being developed by Lofty Brickell LLC (the “Developer”), which was formed solely for such purpose. Any other parties described herein are not the Developer of this project. This Condominium and project are being developed by Lofty Brickell LLC, a Delaware limited liability company (“Developer”), which has a limited right to use the trademarked names and logos of Standard International Management, LLC pursuant to a license and marketing agreement with Standard International Management, LLC. Any and all statements, disclosures and/or representations shall be deemed made by Developer and not by Standard International Management, LLC and you agree to look solely to Developer (and not to Standard International Management, LLC and/or any of its affiliates) with respect to any and all matters relating to the marketing and/or development of the Condominium and project and with respect to the sales of units in the Condominium and project. Stated dimensions are measured to the exterior boundaries of the exterior walls and the centerline of interior demising walls and in fact vary from the dimensions that would be determined by using the description and definition of the “Unit” set forth in the Declaration (which generally only includes the interior airspace between the perimeter walls and excludes interior structural components). Dimensions and square footage are approximate and may vary with actual construction.