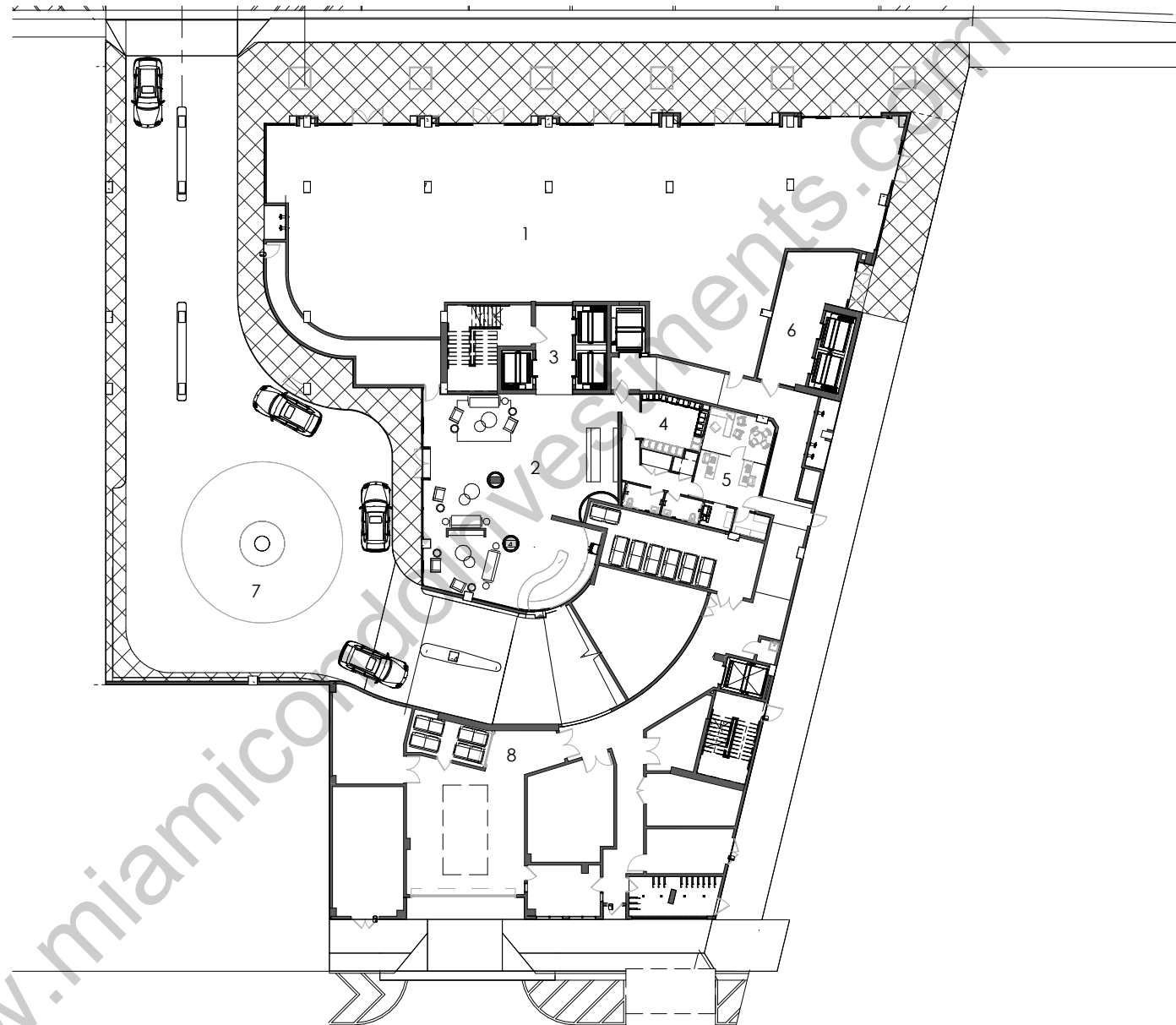
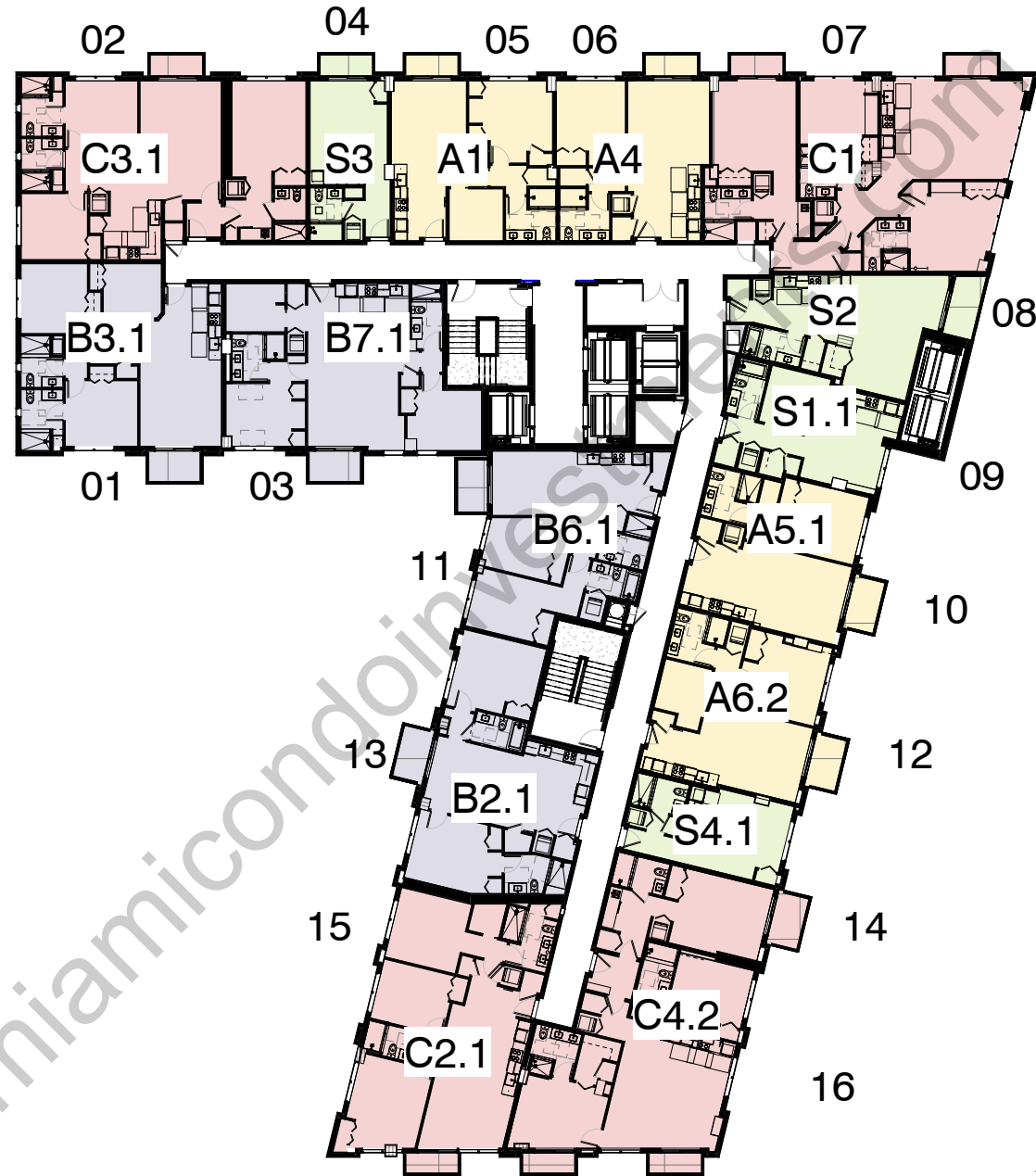


*THE  
RIDER*®  
RESIDENCES | MIAMI

PLANS



LOBBY LEVEL



## RESIDENCES

- STUDIO
- 1 BEDROOM
- 2 BEDROOMS
- 3 BEDROOMS

## SIXTH FLOOR UNIT MATRIX

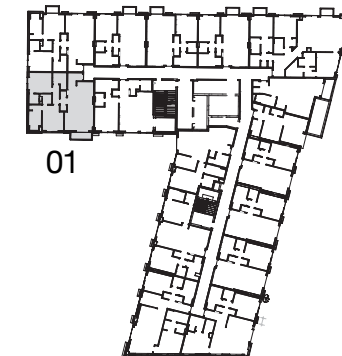
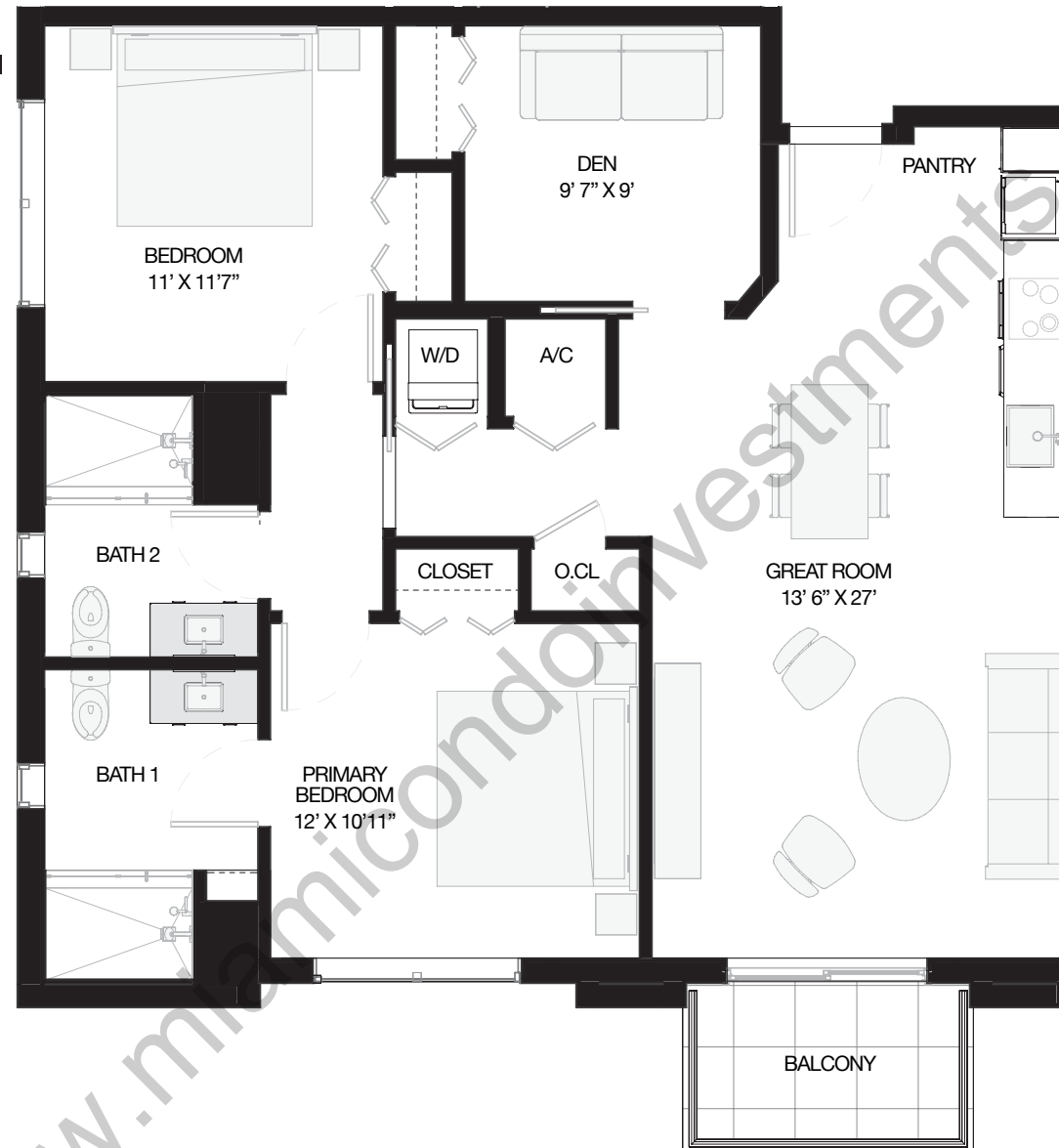


All square footages and dimensions, including (without limitation) ceiling heights, are estimates based on preliminary plans and will vary with actual construction. All floor plans, specifications and other development plans are proposed and conceptual only and are subject to change and will not necessarily accurately reflect the final plans and specifications. Stated square footages and dimensions are measured to the exterior boundaries of the exterior walls and the centerline of interior demising walls between units and in fact vary from the square footages and dimensions that would be determined by using the description and definition of the "Unit" set forth in the Declaration, which generally only includes the interior airspace between the perimeter walls and excludes all interior structural components and other common elements or shared facilities. The method of measurement used herein is generally found in sales materials and is provided to allow a prospective buyer to compare the Units with units in other condominium projects that utilize the same method. For the dimensions of the Unit determined as set forth in the Declaration refer to the prospectus documents. Measurements of rooms set forth on this floor plan are generally taken at the farthest points of each given room (as described above and as if the room were a perfect rectangle), without regard for any cutouts, soffits or other variations. Accordingly, the interior air space dimensions of the actual room will be smaller than the product obtained by multiplying the stated length and width. Terraces and other exterior areas are not part of the Unit.

CIPRÉS



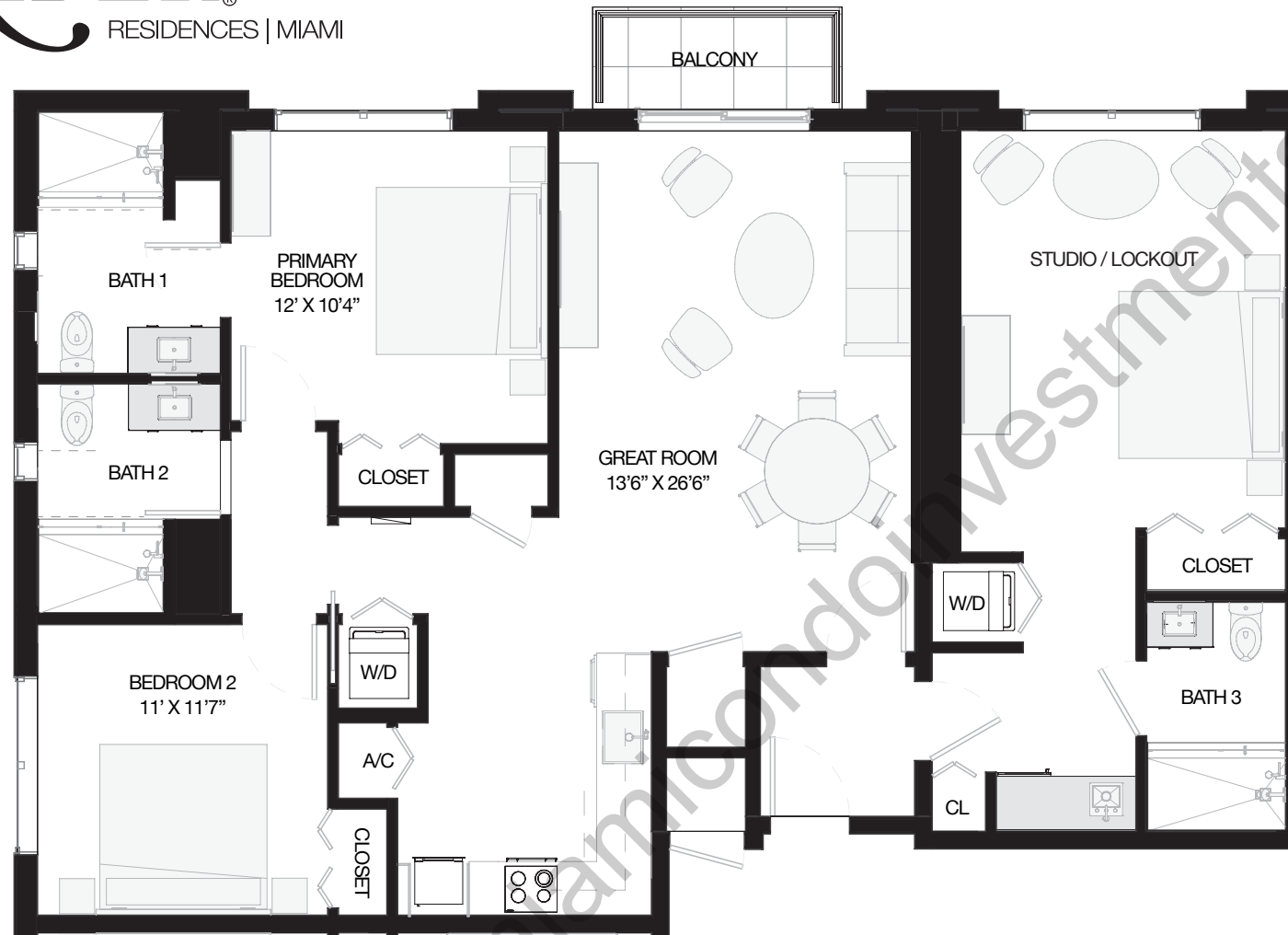
INTERIOR: 1,064 SF 99 M<sup>2</sup>  
BALCONY: 61 SF 6 M<sup>2</sup>  
TOTAL: 1,125 SF 105 M<sup>2</sup>



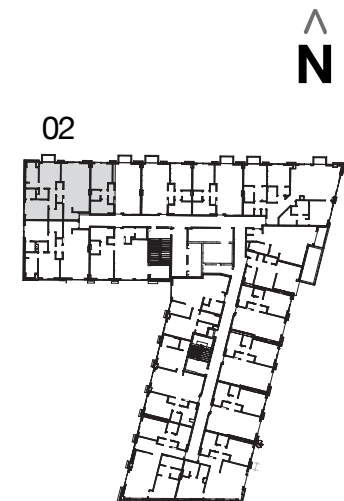
**MODEL B3**  
**2 BEDROOMS + DEN / 2 BATHS**  
FLOORS 3-12



All square footages and dimensions, including (without limitation) ceiling heights, are estimates based on preliminary plans and will vary with actual construction. All floor plans, specifications and other development plans are proposed and conceptual only and are subject to change and will not necessarily accurately reflect the final plans and specifications. Stated square footages and dimensions are measured to the exterior boundaries of the exterior walls and the centerline of interior demising walls between units and in fact vary from the square footages and dimensions that would be determined by using the description and definition of the "Unit" set forth in the Declaration, which generally only includes the interior airspace between the perimeter walls and excludes all interior structural components and other common elements or shared facilities. The method of measurement used herein is generally found in sales materials and is provided to allow a prospective buyer to compare the Units with units in other condominium projects that utilize the same method. For the dimensions of the Unit determined as set forth in the Declaration refer to the prospectus documents. Measurements of rooms set forth on this floor plan are generally taken at the farthest points of each given room (as described above and as if the room were a perfect rectangle), without regard for any cutouts, soffits or other variations. Accordingly, the interior air space dimensions of the actual room will be smaller than the product obtained by multiplying the stated length and width. Terraces and other exterior areas are not part of the Unit.



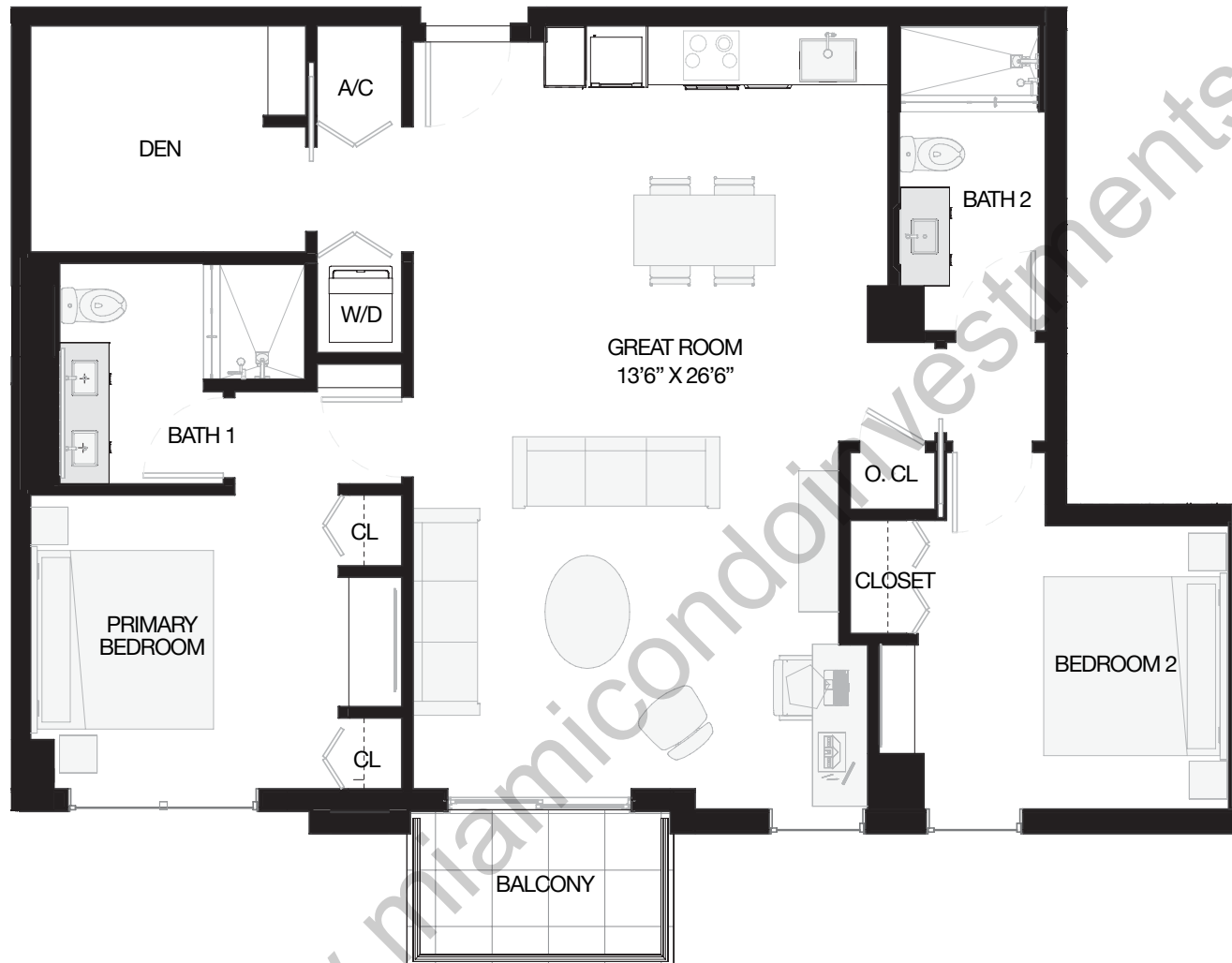
INTERIOR:	1,441 SF	134 M <sup>2</sup>
BALCONY:	37 SF	3.5 M <sup>2</sup>
<b>TOTAL:</b>	<b>1,478 SF</b>	<b>137 M<sup>2</sup></b>



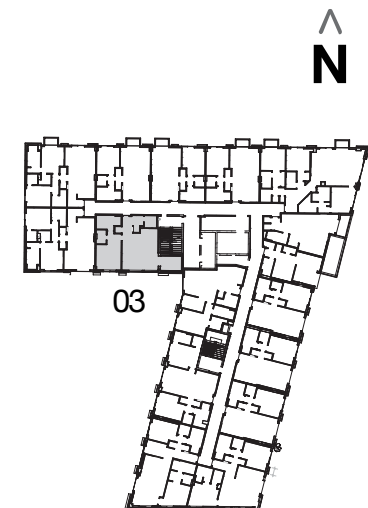
**MODEL C3 (w/ LOCKOUT UNIT)**  
**3 BEDROOMS / 3 BATHS**  
FLOORS 3-12



All square footages and dimensions, including (without limitation) ceiling heights, are estimates based on preliminary plans and will vary with actual construction. All floor plans, specifications and other development plans are proposed and conceptual only and are subject to change and will not necessarily accurately reflect the final plans and specifications. Stated square footages and dimensions are measured to the exterior boundaries of the exterior walls and the centerline of interior demising walls between units and in fact vary from the square footages and dimensions that would be determined by using the description and definition of the "Unit" set forth in the Declaration, which generally only includes the interior airspace between the perimeter walls and excludes all interior structural components and other common elements or shared facilities. The method of measurement used herein is generally found in sales materials and is provided to allow a prospective buyer to compare the Units with units in other condominium projects that utilize the same method. For the dimensions of the Unit determined as set forth in the Declaration refer to the prospectus documents. Measurements of rooms set forth on this floor plan are generally taken at the farthest points of each given room (as described above and as if the room were a perfect rectangle), without regard for any cutouts, soffits or other variations. Accordingly, the interior air space dimensions of the actual room will be smaller than the product obtained by multiplying the stated length and width. Terraces and other exterior areas are not part of the Unit.



INTERIOR:	1,145 SF	106 M <sup>2</sup>
BALCONY:	52 SF	5 M <sup>2</sup>
<b>TOTAL:</b>	<b>1,197 SF</b>	<b>111 M<sup>2</sup></b>



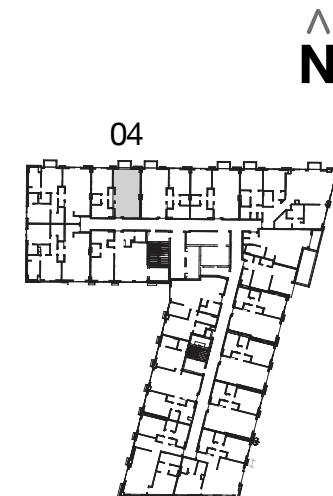
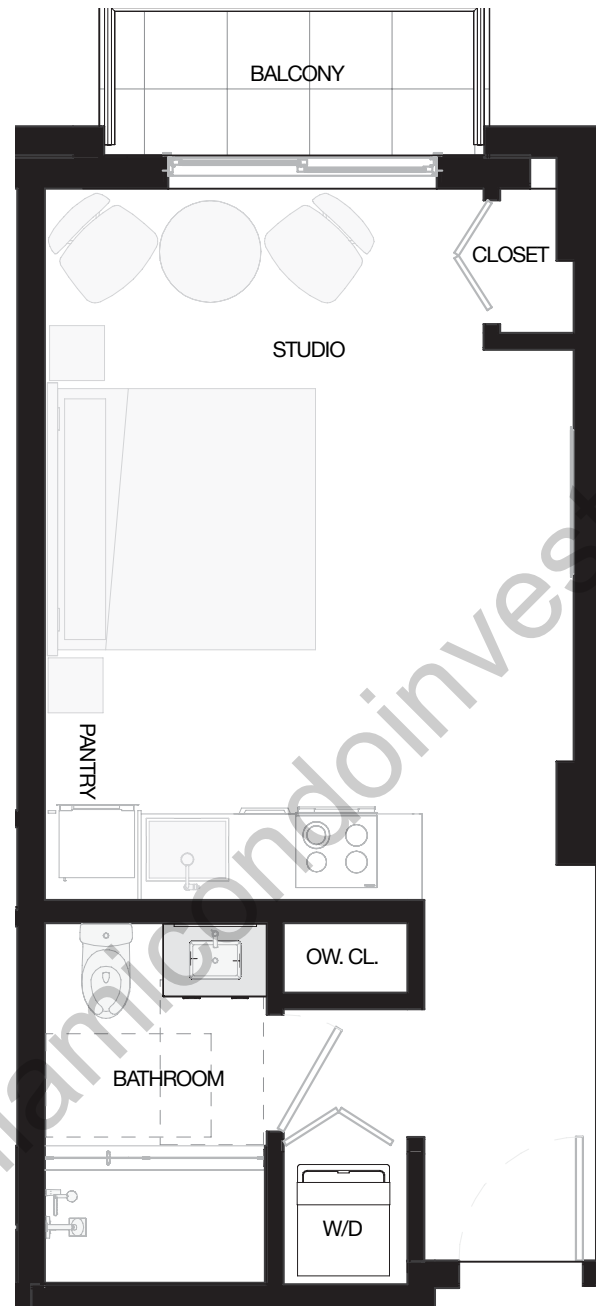
**MODEL B7**  
**2 BEDROOMS + DEN / 2 BATHS**  
FLOORS 4-12



All square footages and dimensions, including (without limitation) ceiling heights, are estimates based on preliminary plans and will vary with actual construction. All floor plans, specifications and other development plans are proposed and conceptual only and are subject to change and will not necessarily accurately reflect the final plans and specifications. Stated square footages and dimensions are measured to the exterior boundaries of the exterior walls and the centerline of interior demising walls between units and in fact vary from the square footages and dimensions that would be determined by using the description and definition of the "Unit" set forth in the Declaration, which generally only includes the interior airspace between the perimeter walls and excludes all interior structural components and other common elements or shared facilities. The method of measurement used herein is generally found in sales materials and is provided to allow a prospective buyer to compare the Units with units in other condominium projects that utilize the same method. For the dimensions of the Unit determined as set forth in the Declaration refer to the prospectus documents. Measurements of rooms set forth on this floor plan are generally taken at the farthest points of each given room (as described above and as if the room were a perfect rectangle), without regard for any cutouts, soffits or other variations. Accordingly, the interior air space dimensions of the actual room will be smaller than the product obtained by multiplying the stated length and width. Terraces and other exterior areas are not part of the Unit.

**04** LINE

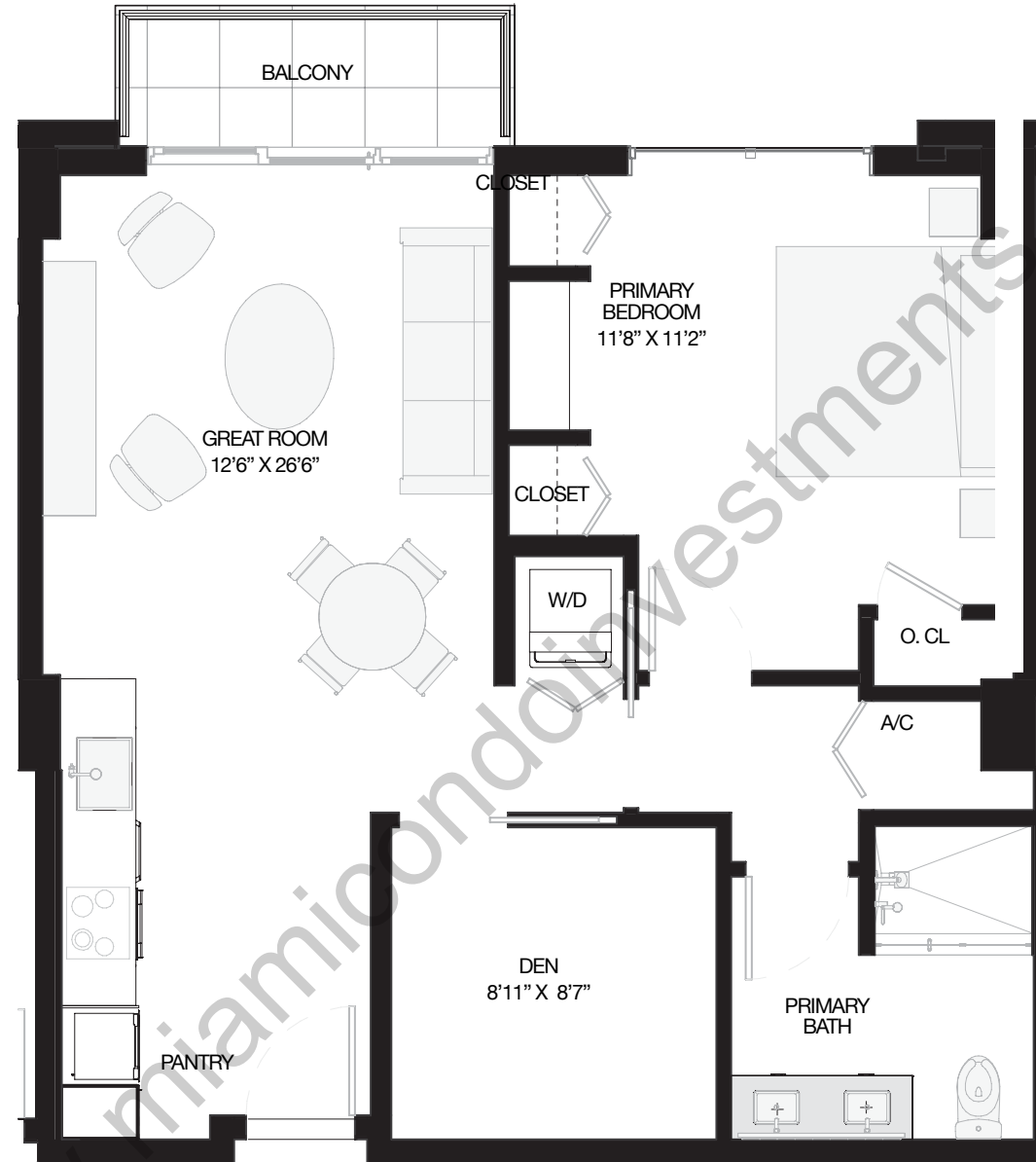
INTERIOR:	386 SF	36 M <sup>2</sup>
BALCONY:	37 SF	3.5 M <sup>2</sup>
<b>TOTAL:</b>	<b>423 SF</b>	<b>39 M<sup>2</sup></b>



**MODEL S3**  
**STUDIO / 1 BATH**  
FLOORS 3-12

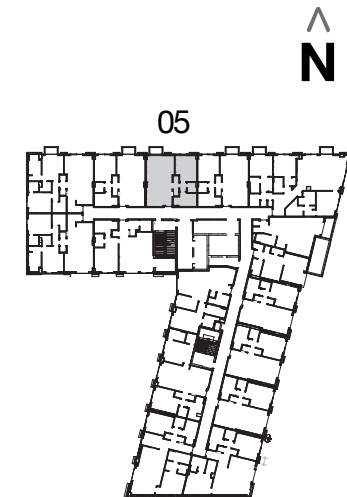


All square footages and dimensions, including (without limitation) ceiling heights, are estimates based on preliminary plans and will vary with actual construction. All floor plans, specifications and other development plans are proposed and conceptual only and are subject to change and will not necessarily accurately reflect the final plans and specifications. Stated square footages and dimensions are measured to the exterior boundaries of the exterior walls and the centerline of interior demising walls between units and in fact vary from the square footages and dimensions that would be determined by using the description and definition of the "Unit" set forth in the Declaration, which generally only includes the interior airspace between the perimeter walls and excludes all interior structural components and other common elements or shared facilities. The method of measurement used herein is generally found in sales materials and is provided to allow a prospective buyer to compare the Units with units in other condominium projects that utilize the same method. For the dimensions of the Unit determined as set forth in the Declaration refer to the prospectus documents. Measurements of rooms set forth on this floor plan are generally taken at the farthest points of each given room (as described above and as if the room were a perfect rectangle), without regard for any cutouts, soffits or other variations. Accordingly, the interior air space dimensions of the actual room will be smaller than the product obtained by multiplying the stated length and width. Terraces and other exterior areas are not part of the Unit.



**05** LINE

INTERIOR:	777 SF	72 M <sup>2</sup>
BALCONY:	43 SF	4 M <sup>2</sup>
<b>TOTAL:</b>	<b>817 SF</b>	<b>76 M<sup>2</sup></b>

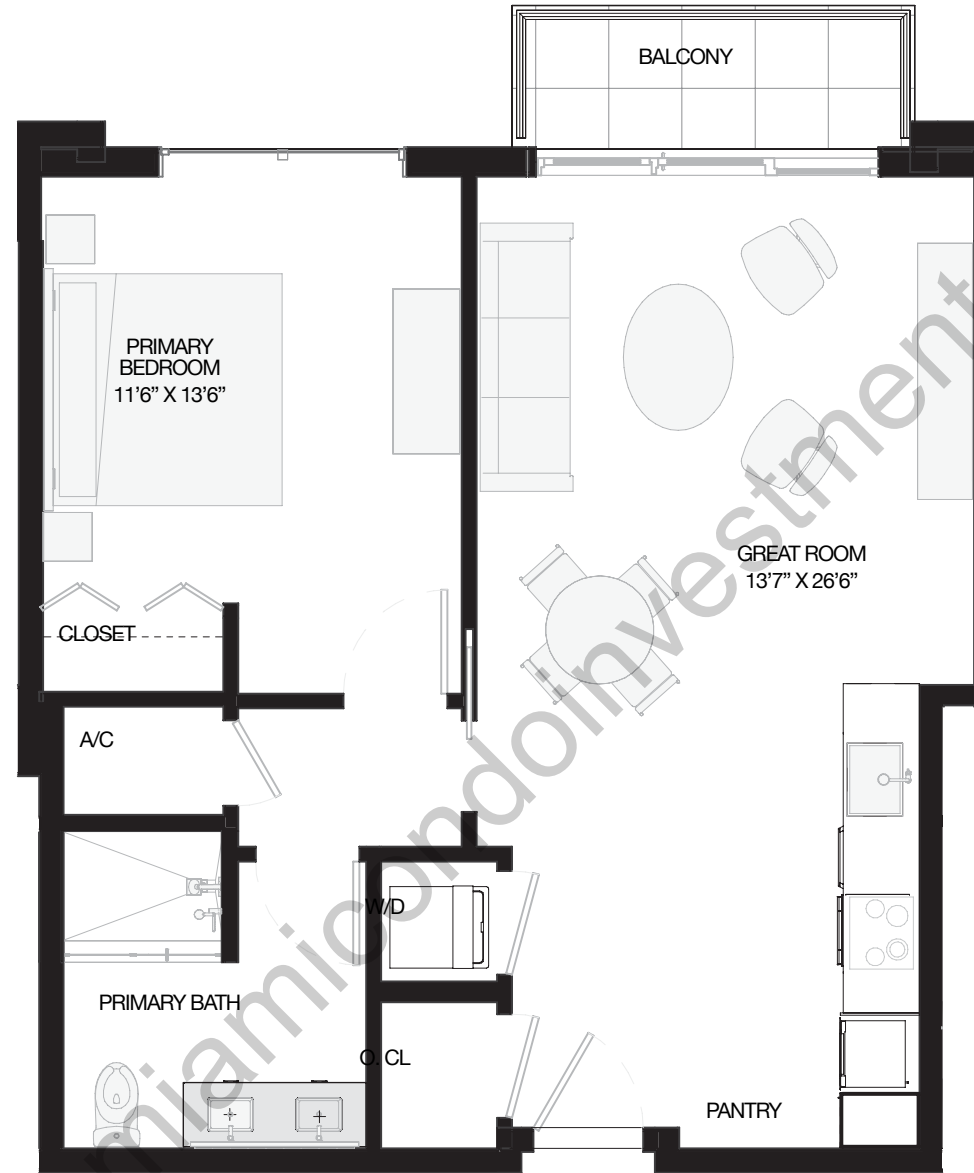


**MODEL A1**  
**1 BEDROOM + DEN / 1 BATH**  
FLOORS 3-12



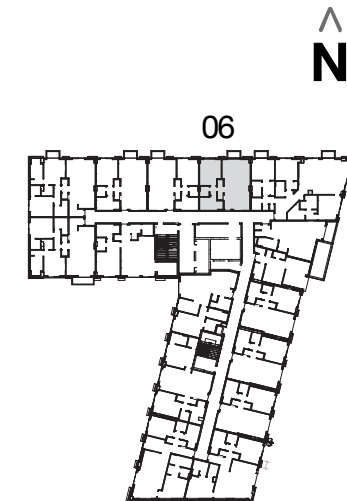
All square footages and dimensions, including (without limitation) ceiling heights, are estimates based on preliminary plans and will vary with actual construction. All floor plans, specifications and other development plans are proposed and conceptual only and are subject to change and will not necessarily accurately reflect the final plans and specifications. Stated square footages and dimensions are measured to the exterior boundaries of the exterior walls and the centerline of interior demising walls between units and in fact vary from the square footages and dimensions that would be determined by using the description and definition of the "Unit" set forth in the Declaration, which generally only includes the interior airspace between the perimeter walls and excludes all interior structural components and other common elements or shared facilities. The method of measurement used herein is generally found in sales materials and is provided to allow a prospective buyer to compare the Units with units in other condominium projects that utilize the same method. For the dimensions of the Unit determined as set forth in the Declaration refer to the prospectus documents. Measurements of rooms set forth on this floor plan are generally taken at the farthest points of each given room (as described above and as if the room were a perfect rectangle), without regard for any cutouts, soffits or other variations. Accordingly, the interior air space dimensions of the actual room will be smaller than the product obtained by multiplying the stated length and width. Terraces and other exterior areas are not part of the Unit.





**06** LINE

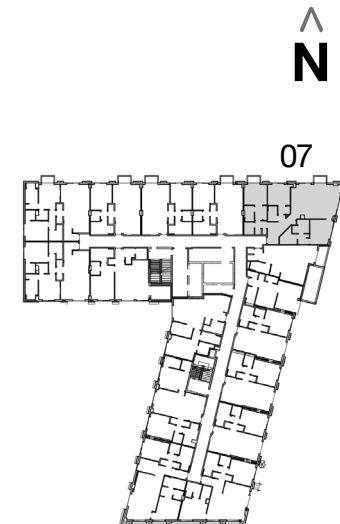
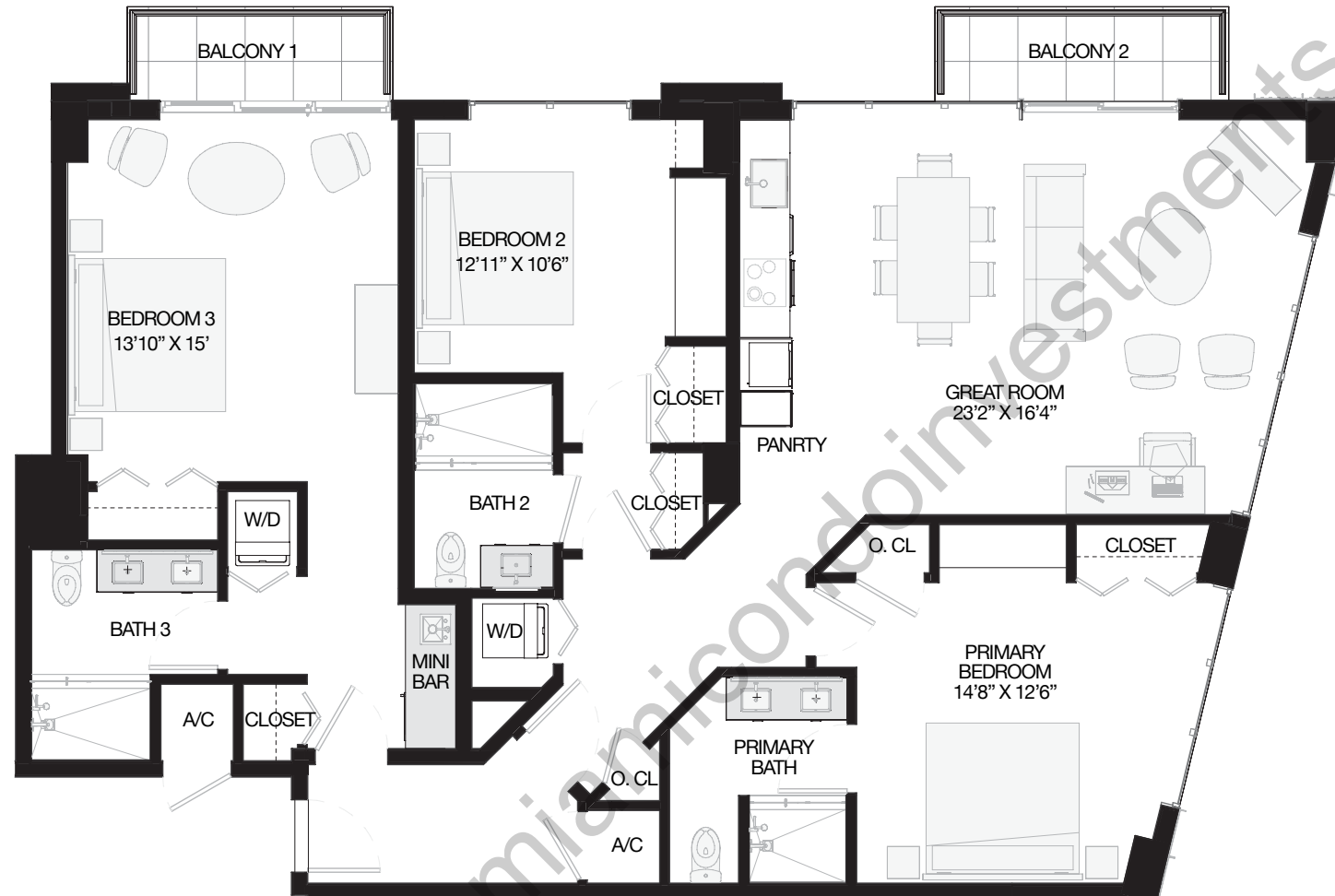
INTERIOR:	708	SF	66 M <sup>2</sup>
BALCONY:	43	SF	4 M <sup>2</sup>
<b>TOTAL:</b>	<b>751</b>	<b>SF</b>	<b>70 M<sup>2</sup></b>



**MODEL A4**  
**1 BEDROOM / 1 BATH**  
FLOORS 3-12



INTERIOR:	1,612	SF	150 M <sup>2</sup>
BALCONY:	91	SF	9 M <sup>2</sup>
<b>TOTAL:</b>	<b>1,686</b>	<b>SF</b>	<b>157 M<sup>2</sup></b>

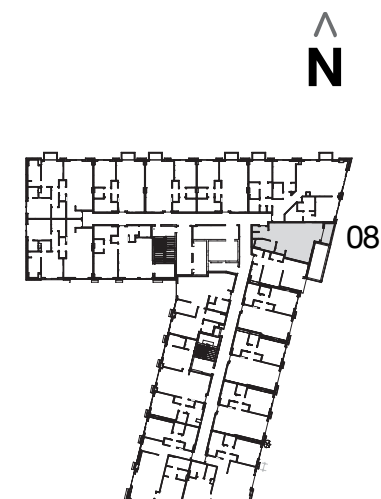
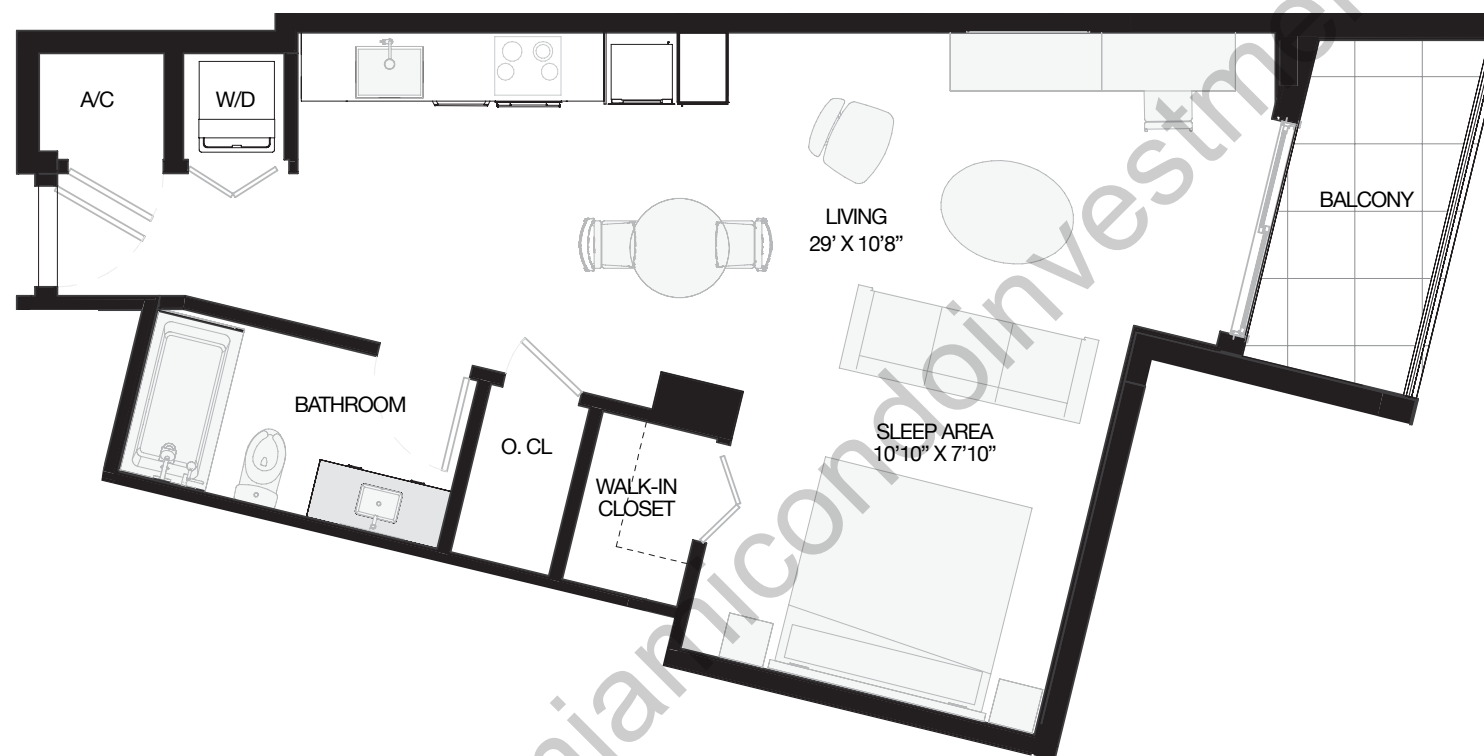


**MODEL C1**  
**3 BEDROOMS / 3 BATHS** (WITH LOCKOUT OPTION)  
FLOORS 3-12



All square footages and dimensions, including (without limitation) ceiling heights, are estimates based on preliminary plans and will vary with actual construction. All floor plans, specifications and other development plans are proposed and conceptual only and are subject to change and will not necessarily accurately reflect the final plans and specifications. Stated square footages and dimensions are measured to the exterior boundaries of the exterior walls and the centerline of interior demising walls between units and in fact vary from the square footages and dimensions that would be determined by using the description and definition of the "Unit" set forth in the Declaration, which generally only includes the interior airspace between the perimeter walls and excludes all interior structural components and other common elements or shared facilities. The method of measurement used herein is generally found in sales materials and is provided to allow a prospective buyer to compare the Units with units in other condominium projects that utilize the same method. For the dimensions of the Unit determined as set forth in the Declaration refer to the prospectus documents. Measurements of rooms set forth on this floor plan are generally taken at the farthest points of each given room (as described above and as if the room were a perfect rectangle), without regard for any cutouts, soffits or other variations. Accordingly, the interior air space dimensions of the actual room will be smaller than the product obtained by multiplying the stated length and width. Terraces and other exterior areas are not part of the Unit.

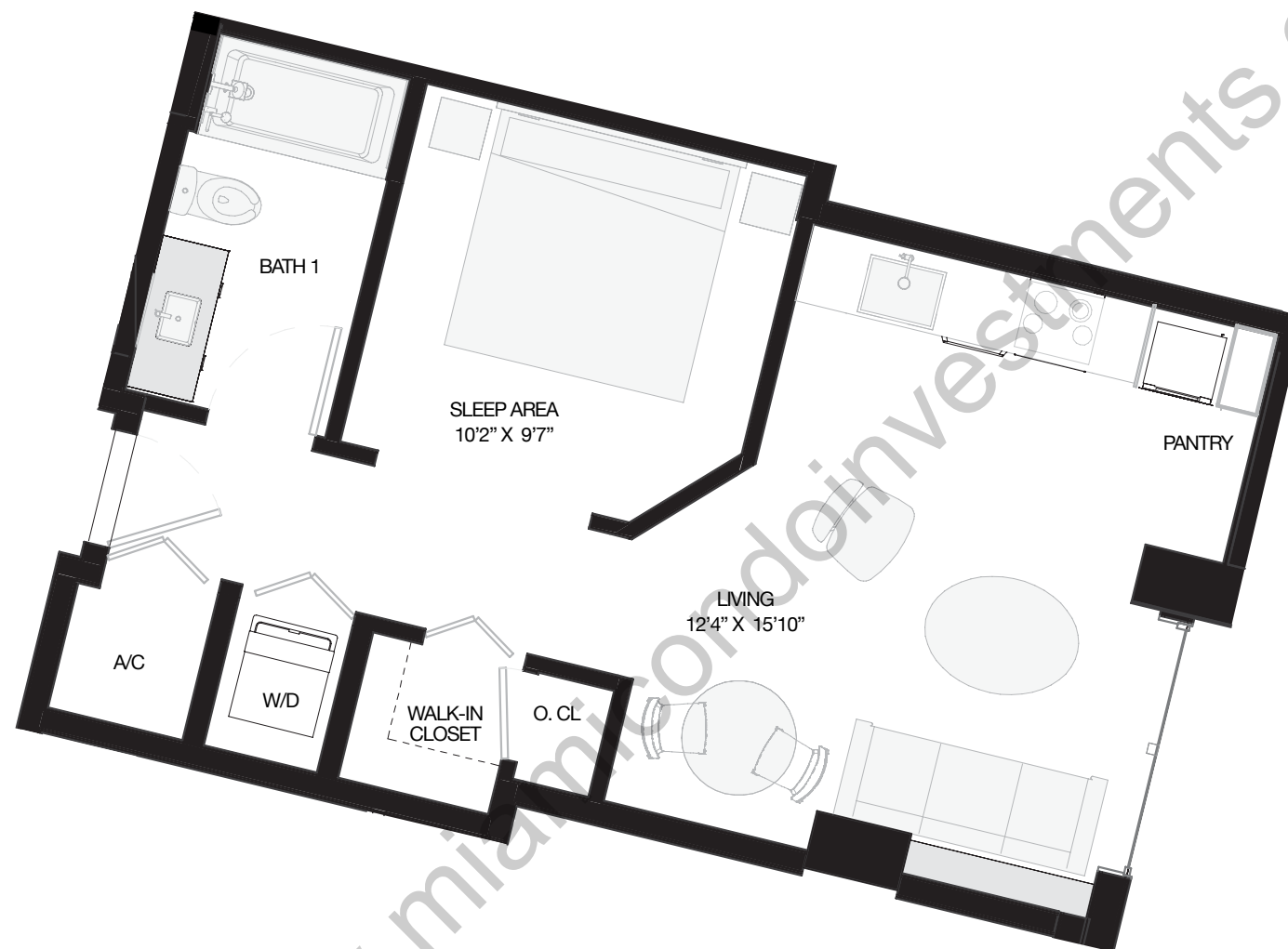
INTERIOR:	599	SF	56 M <sup>2</sup>
BALCONY:	62	SF	6 M <sup>2</sup>
<b>TOTAL:</b>	<b>661</b>	<b>SF</b>	<b>62 M<sup>2</sup></b>



**MODEL S2**  
**STUDIO / 1 BATH**  
FLOORS 3-12



INTERIOR: 511 SF 48 M<sup>2</sup>  
TOTAL: 511 SF 48 M<sup>2</sup>

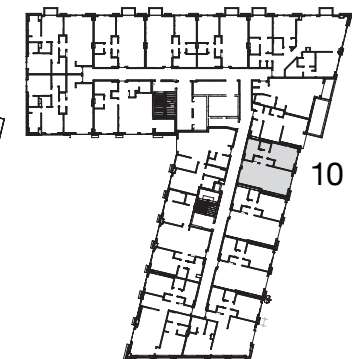
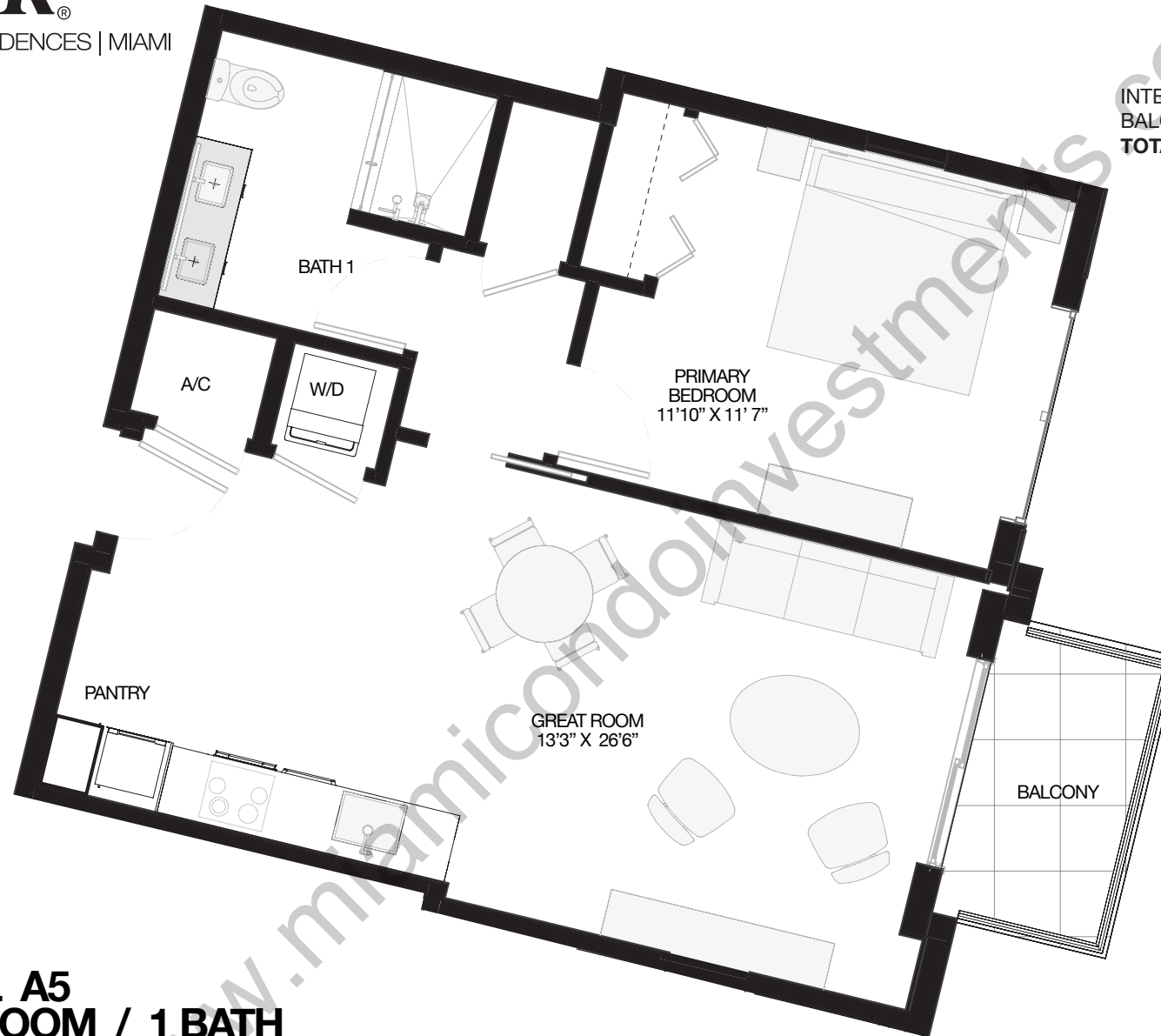


**MODEL S1**  
**STUDIO / 1 BATH**  
FLOORS 3-12



All square footages and dimensions, including (without limitation) ceiling heights, are estimates based on preliminary plans and will vary with actual construction. All floor plans, specifications and other development plans are proposed and conceptual only and are subject to change and will not necessarily accurately reflect the final plans and specifications. Stated square footages and dimensions are measured to the exterior boundaries of the exterior walls and the centerline of interior demising walls between units and in fact vary from the square footages and dimensions that would be determined by using the description and definition of the "Unit" set forth in the Declaration, which generally only includes the interior airspace between the perimeter walls and excludes all interior structural components and other common elements or shared facilities. The method of measurement used herein is generally found in sales materials and is provided to allow a prospective buyer to compare the Units with units in other condominium projects that utilize the same method. For the dimensions of the Unit determined as set forth in the Declaration refer to the prospectus documents. Measurements of rooms set forth on this floor plan are generally taken at the farthest points of each given room (as described above and as if the room were a perfect rectangle), without regard for any cutouts, soffits or other variations. Accordingly, the interior air space dimensions of the actual room will be smaller than the product obtained by multiplying the stated length and width. Terraces and other exterior areas are not part of the Unit.

INTERIOR:	704	SF	65 M <sup>2</sup>
BALCONY:	52	SF	5 M <sup>2</sup>
<b>TOTAL:</b>	<b>756</b>	<b>SF</b>	<b>70 M<sup>2</sup></b>



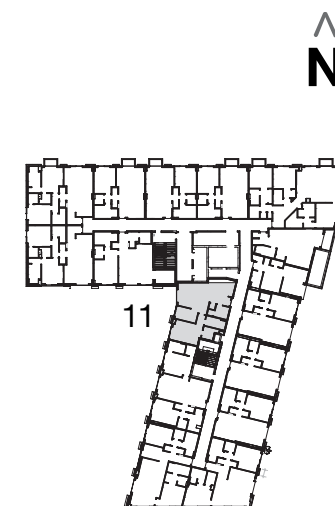
**MODEL A5**  
**1 BEDROOM / 1 BATH**  
FLOORS 3-12



All square footages and dimensions, including (without limitation) ceiling heights, are estimates based on preliminary plans and will vary with actual construction. All floor plans, specifications and other development plans are proposed and conceptual only and are subject to change and will not necessarily accurately reflect the final plans and specifications. Stated square footages and dimensions are measured to the exterior boundaries of the exterior walls and the centerline of interior demising walls between units and in fact vary from the square footages and dimensions that would be determined by using the description and definition of the "Unit" set forth in the Declaration, which generally only includes the interior airspace between the perimeter walls and excludes all interior structural components and other common elements or shared facilities. The method of measurement used herein is generally found in sales materials and is provided to allow a prospective buyer to compare the Units with units in other condominium projects that utilize the same method. For the dimensions of the Unit determined as set forth in the Declaration refer to the prospectus documents. Measurements of rooms set forth on this floor plan are generally taken at the farthest points of each given room (as described above and as if the room were a perfect rectangle), without regard for any cutouts, soffits or other variations. Accordingly, the interior air space dimensions of the actual room will be smaller than the product obtained by multiplying the stated length and width. Terraces and other exterior areas are not part of the Unit.

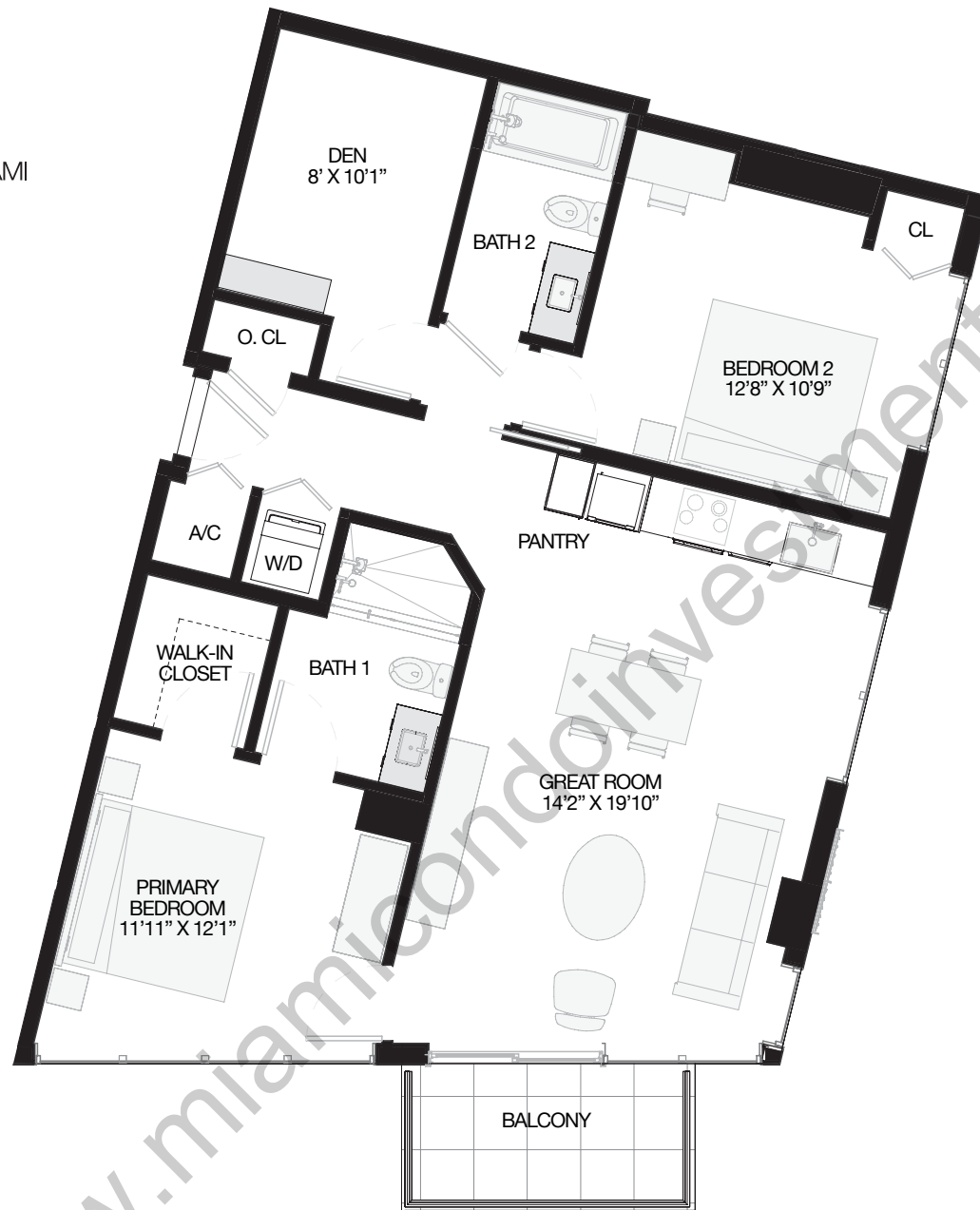


INTERIOR:	897 SF	83 M <sup>2</sup>
BALCONY:	52 SF	5 M <sup>2</sup>
<b>TOTAL:</b>	<b>949 SF</b>	<b>88 M<sup>2</sup></b>



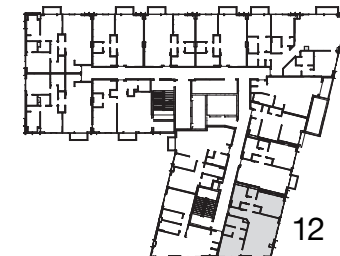
**MODEL B6**  
**2 BEDROOMS / 2 BATHS**  
FLOORS 3-12





**12** LINE

INTERIOR:	1021	SF	95 M <sup>2</sup>
BALCONY:	60	SF	6 M <sup>2</sup>
<b>TOTAL:</b>	<b>1081</b>	<b>SF</b>	<b>101 M<sup>2</sup></b>

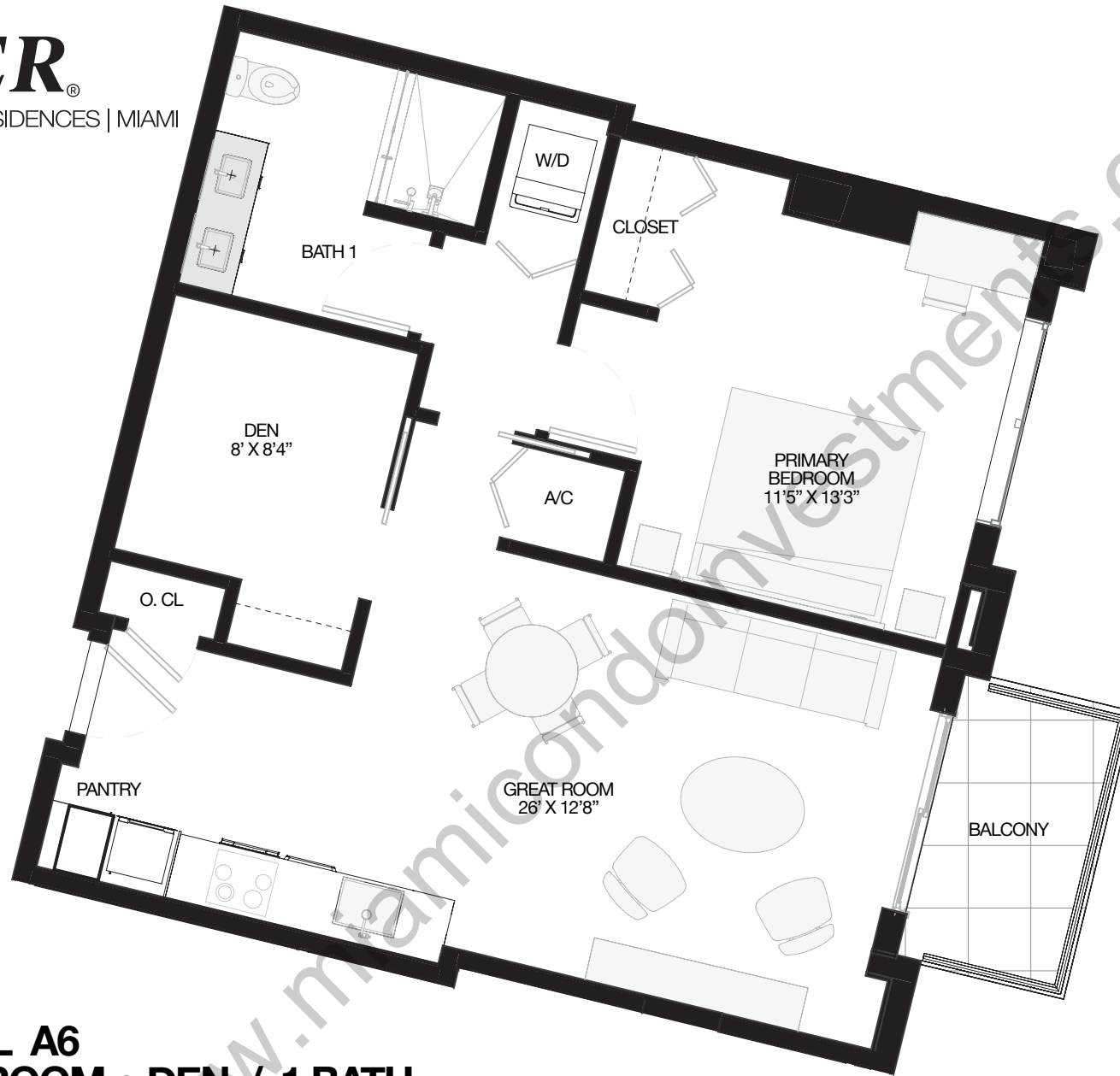


**MODEL B5**  
**2 BEDROOMS + DEN / 2 BATHS**  
FLOORS 10 -12



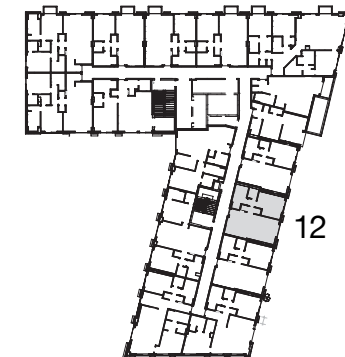
All square footages and dimensions, including (without limitation) ceiling heights, are estimates based on preliminary plans and will vary with actual construction. All floor plans, specifications and other development plans are proposed and conceptual only and are subject to change and will not necessarily accurately reflect the final plans and specifications. Stated square footages and dimensions are measured to the exterior boundaries of the exterior walls and the centerline of interior demising walls between units and in fact vary from the square footages and dimensions that would be determined by using the description and definition of the "Unit" set forth in the Declaration, which generally only includes the interior airspace between the perimeter walls and excludes all interior structural components and other common elements or shared facilities. The method of measurement used herein is generally found in sales materials and is provided to allow a prospective buyer to compare the Units with units in other condominium projects that utilize the same method. For the dimensions of the Unit determined as set forth in the Declaration refer to the prospectus documents. Measurements of rooms set forth on this floor plan are generally taken at the farthest points of each given room (as described above and as if the room were a perfect rectangle), without regard for any cutouts, soffits or other variations. Accordingly, the interior air space dimensions of the actual room will be smaller than the product obtained by multiplying the stated length and width. Terraces and other exterior areas are not part of the Unit.





**12** LINE

INTERIOR:	774 SF	72 M <sup>2</sup>
BALCONY:	52 SF	5 M <sup>2</sup>
<b>TOTAL:</b>	<b>823 SF</b>	<b>77 M<sup>2</sup></b>

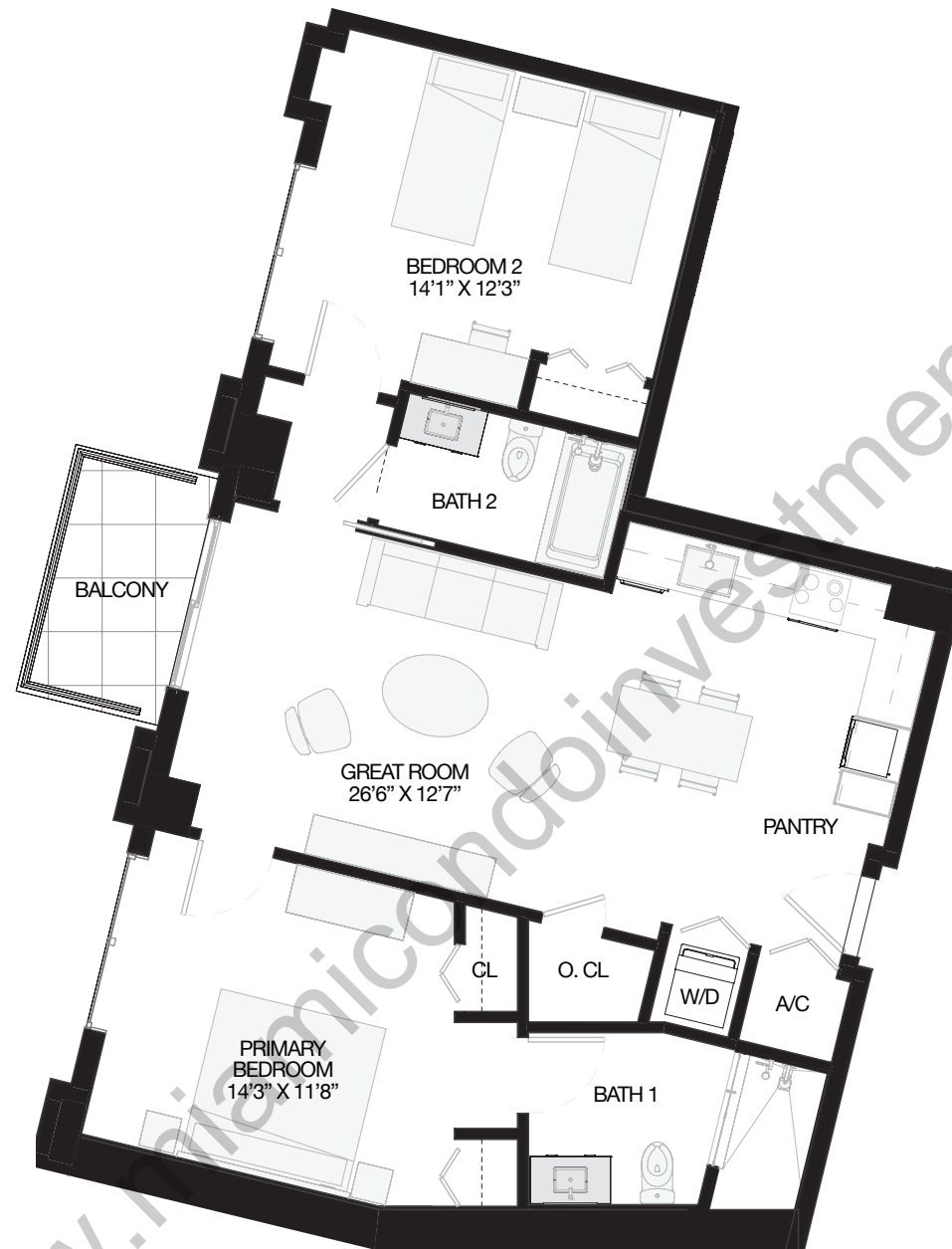


**MODEL A6**  
**1 BEDROOM + DEN / 1 BATH**  
FLOORS 3 -12



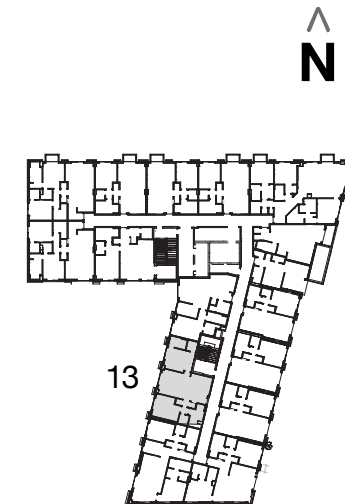
All square footages and dimensions, including (without limitation) ceiling heights, are estimates based on preliminary plans and will vary with actual construction. All floor plans, specifications and other development plans are proposed and conceptual only and are subject to change and will not necessarily accurately reflect the final plans and specifications. Stated square footages and dimensions are measured to the exterior boundaries of the exterior walls and the centerline of interior demising walls between units and in fact vary from the square footages and dimensions that would be determined by using the description and definition of the "Unit" set forth in the Declaration, which generally only includes the interior airspace between the perimeter walls and excludes all interior structural components and other common elements or shared facilities. The method of measurement used herein is generally found in sales materials and is provided to allow a prospective buyer to compare the Units with units in other condominium projects that utilize the same method. For the dimensions of the Unit determined as set forth in the Declaration refer to the prospectus documents. Measurements of rooms set forth on this floor plan are generally taken at the farthest points of each given room (as described above and as if the room were a perfect rectangle), without regard for any cutouts, soffits or other variations. Accordingly, the interior air space dimensions of the actual room will be smaller than the product obtained by multiplying the stated length and width. Terraces and other exterior areas are not part of the Unit.





**13** LINE

INTERIOR:	1,015	SF	94 M <sup>2</sup>
BALCONY:	52	SF	5 M <sup>2</sup>
<b>TOTAL:</b>	<b>1,067</b>	<b>SF</b>	<b>99 M<sup>2</sup></b>

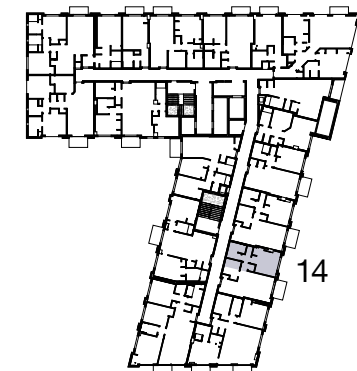
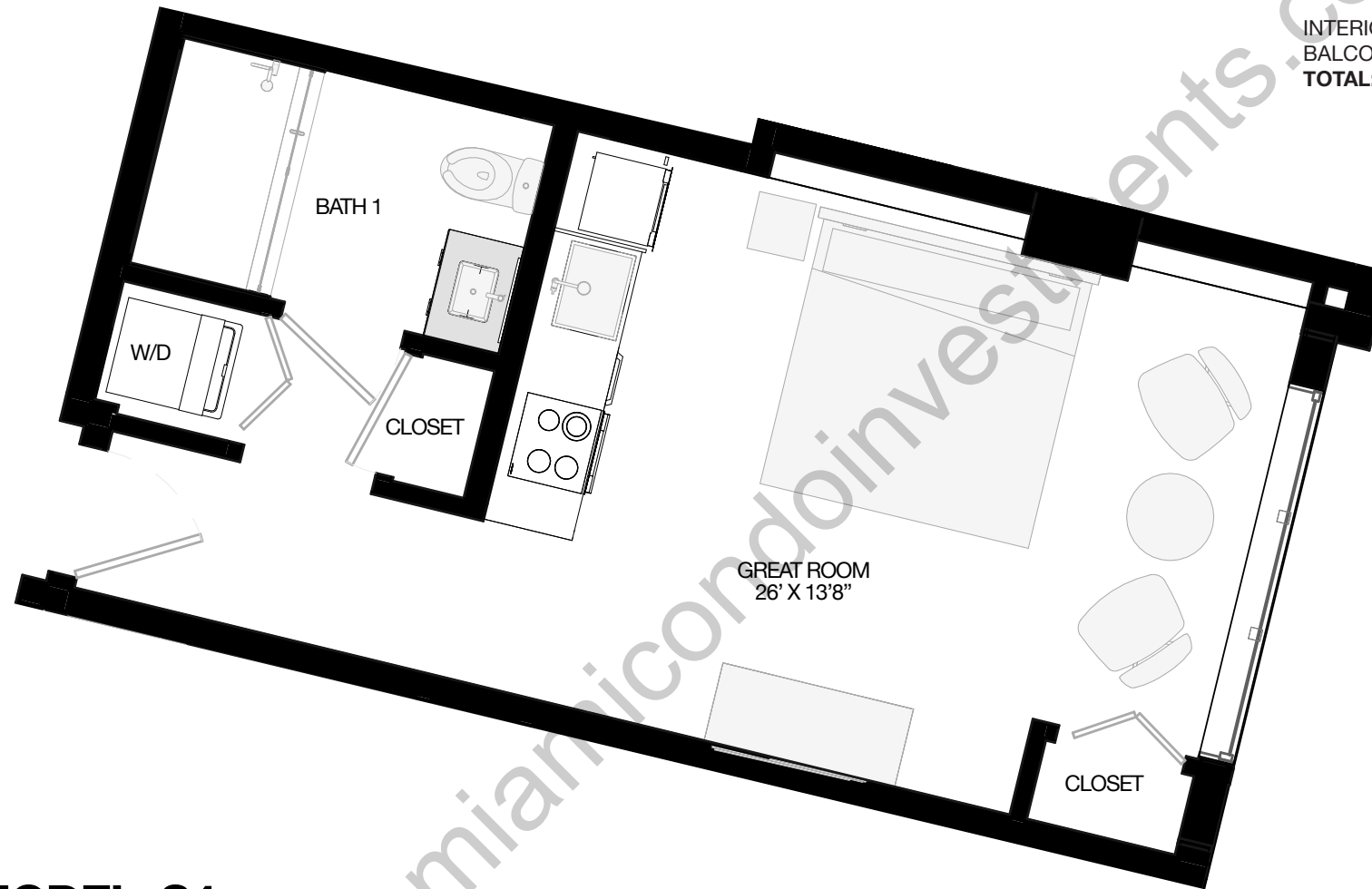


**MODEL B2**  
**2 BEDROOMS / 2 BATHS**  
FLOORS 3-8



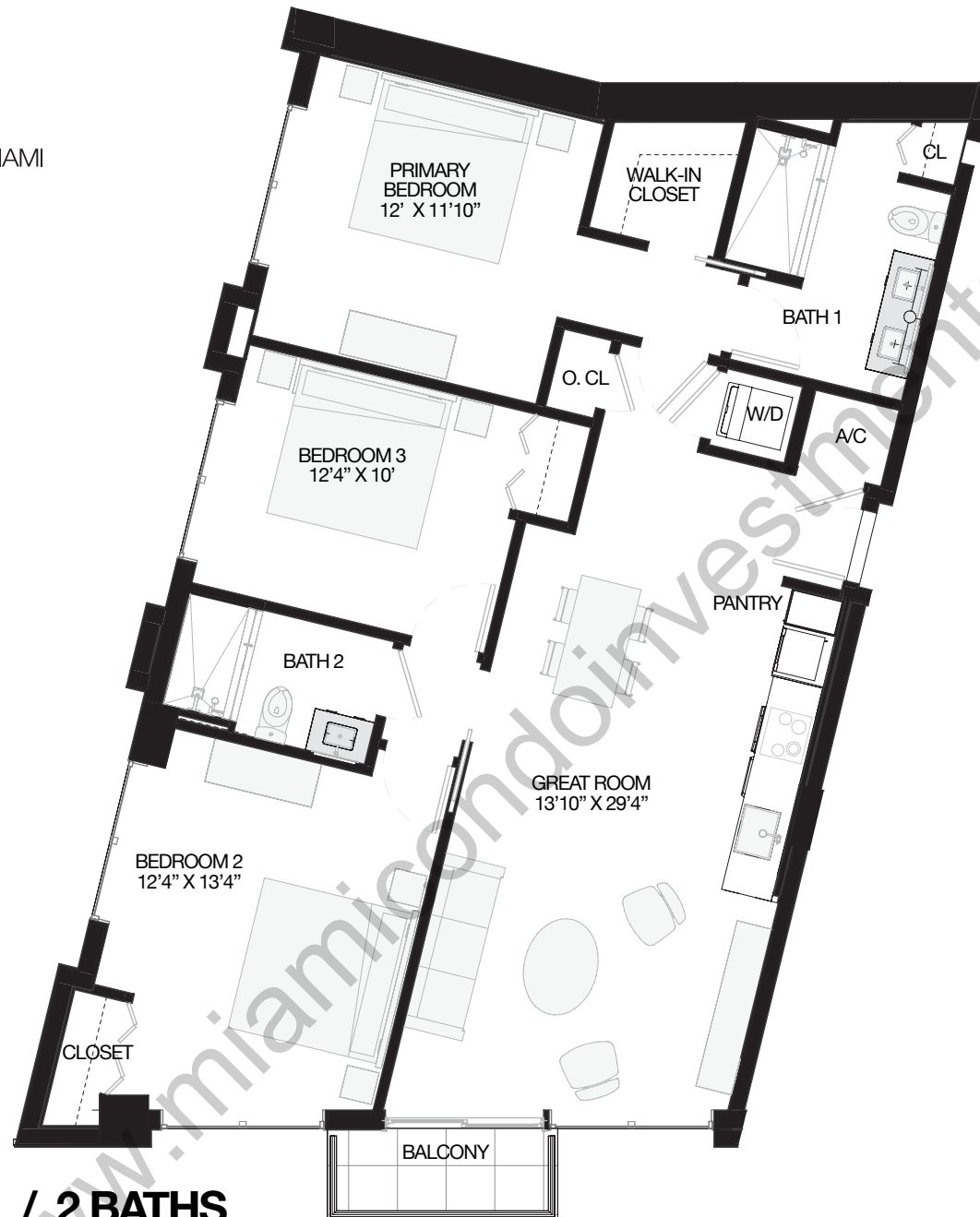
All square footages and dimensions, including (without limitation) ceiling heights, are estimates based on preliminary plans and will vary with actual construction. All floor plans, specifications and other development plans are proposed and conceptual only and are subject to change and will not necessarily accurately reflect the final plans and specifications. Stated square footages and dimensions are measured to the exterior boundaries of the exterior walls and the centerline of interior demising walls between units and in fact vary from the square footages and dimensions that would be determined by using the description and definition of the "Unit" set forth in the Declaration, which generally only includes the interior airspace between the perimeter walls and excludes all interior structural components and other common elements or shared facilities. The method of measurement used herein is generally found in sales materials and is provided to allow a prospective buyer to compare the Units with units in other condominium projects that utilize the same method. For the dimensions of the Unit determined as set forth in the Declaration refer to the prospectus documents. Measurements of rooms set forth on this floor plan are generally taken at the farthest points of each given room (as described above and as if the room were a perfect rectangle), without regard for any cutouts, soffits or other variations. Accordingly, the interior air space dimensions of the actual room will be smaller than the product obtained by multiplying the stated length and width. Terraces and other exterior areas are not part of the Unit.

INTERIOR:	353 SF	33 M <sup>2</sup>
BALCONY:	0 SF	0 M <sup>2</sup>
<b>TOTAL:</b>	<b>353 SF</b>	<b>33 M<sup>2</sup></b>



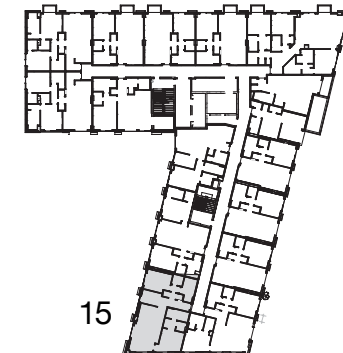
**MODEL S4**  
**STUDIO / 1 BATH**  
FLOORS 3-8





**15 LINE**

INTERIOR:	1,240 SF	115 M <sup>2</sup>
BALCONY:	36 SF	3 M <sup>2</sup>
<b>TOTAL:</b>	<b>1,276 SF</b>	<b>119 M<sup>2</sup></b>



**MODEL C2**  
**3 BEDROOMS / 2 BATHS**  
FLOORS 3-8

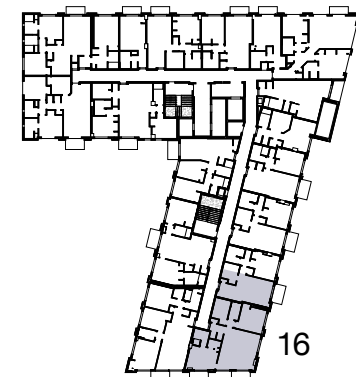


All square footages and dimensions, including (without limitation) ceiling heights, are estimates based on preliminary plans and will vary with actual construction. All floor plans, specifications and other development plans are proposed and conceptual only and are subject to change and will not necessarily accurately reflect the final plans and specifications. Stated square footages and dimensions are measured to the exterior boundaries of the exterior walls and the centerline of interior demising walls between units and in fact vary from the square footages and dimensions that would be determined by using the description and definition of the "Unit" set forth in the Declaration, which generally only includes the interior airspace between the perimeter walls and excludes all interior structural components and other common elements or shared facilities. The method of measurement used herein is generally found in sales materials and is provided to allow a prospective buyer to compare the Units with units in other condominium projects that utilize the same method. For the dimensions of the Unit determined as set forth in the Declaration refer to the prospectus documents. Measurements of rooms set forth on this floor plan are generally taken at the farthest points of each given room (as described above and as if the room were a perfect rectangle), without regard for any cutouts, soffits or other variations. Accordingly, the interior air space dimensions of the actual room will be smaller than the product obtained by multiplying the stated length and width. Terraces and other exterior areas are not part of the Unit.



**16 LINE**

INTERIOR:	1,394 SF	130 M <sup>2</sup>
BALCONY:	122 SF	11 M <sup>2</sup>
<b>TOTAL:</b>	<b>1,516 SF</b>	<b>141 M<sup>2</sup></b>



**MODEL C4**  
**3 BEDROOMS / 3 BATHS**  
FLOORS 3-8

