



SOLINA

BAY HARBOR

SOLINA
BAY HARBOR


WELCOME TO BAY HARBOR ISLANDS,
WHERE LUXURY LIVING MEETS ISLAND CHARM.



<div>1</div> <div>Ruth K, Broad Bay Harbor K-8</div> <div>0.2 mi</div>	<div>2</div> <div>Kane Concourse</div> <div>0.4 mi</div>	<div>3</div> <div>Bal Harbour Shops</div> <div>0.9 mi</div>
<div>4</div> <div>Harding Ave</div> <div>1.9 mi</div>	<div>5</div> <div>Surfside Beach</div> <div>1 mi</div>	<div>6</div> <div>Haulover Beach</div> <div>2.5 mi</div>
<div></div> <div>South Beach, 8 mi Coconut Grove, 17 mi Brickell, 15 mi Downtown Miami, 14 mi</div>	<div></div> <div>Design District, 8 mi Aventura Mall, 7.5 mi Wynwood Walls, 10 mi Kesaya Arena, 11 mi</div>	<div></div> <div>Miami Int’l Airport, 16 mi Fort Lauderdale Int’l Airport, 18 mi Opa-Locka Executive Airport, 10 mi</div>

MIAMI DEBUT

PIONEERING NEW YORK
DEVELOPER AND BUILDER,
REDHOEK+, SELECTS BAY
HARBOR ISLANDS TO ENTER
THE MIAMI MARKET.



“We don’t start on the excel sheet,
we start by falling in love with the
neighborhood”

LEE COHEN, DEVELOPER



“For Solina, we wanted to play off of it feeling like a home—and not like a tower.

When you arrive, you immediately have a sense of tranquility. From the entrance to the courtyard to the small corridors it gives a sense of peace.”

LEE COHEN, DEVELOPER

Notable Projects From RedHoek+



THE CONOVER

Red Hook, Brooklyn

22 Condos
March 2023 Completion



996 MANHATTAN AVE

Greenpoint, Brooklyn

10 Condos
December 2023 Completion



OPAL

Gravesend, Brooklyn

12 Condos
Summer 2025 Completion




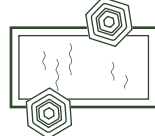



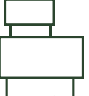


ONYX

Gravesend, Brooklyn

12 Condos
Summer 2025 Completion

THE BUILDING

<div>9</div> <div>Expansive Luxury Residences</div>	<div></div> <div>18 Covered Parking Spots</div>	<div></div> <div>Private Courtyard Lobby & Entrance</div>
<div></div> <div>Boutique Fitness Center</div>	<div></div> <div>Tranquility Pool & Cold Plunge</div>	<div></div> <div>Private Storage / Owner's Closet</div>
<div></div> <div>Doorman & Onsite Management</div>	<div></div> <div>Flexible Rental Terms</div>	<div></div> <div>~\$1.05 HOAs</div>





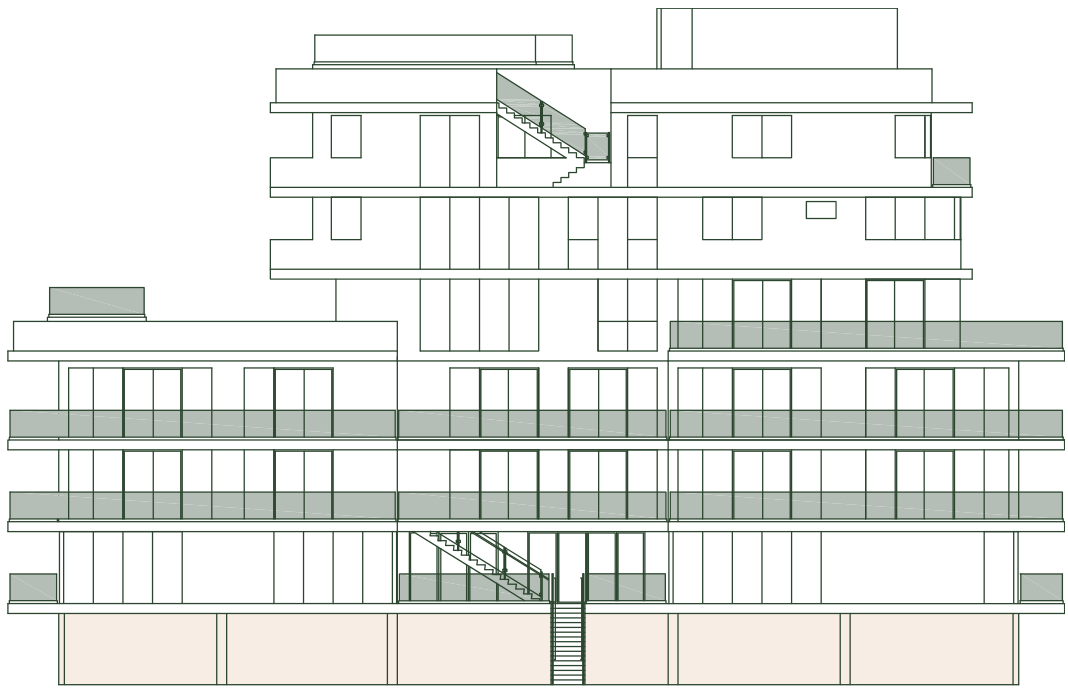












Ground Floor

Building Entrance

Amenities

Residence Floors

Private Penthouse Rooftop

SOUTH
93RD ST



WEST

COVERED PARKING

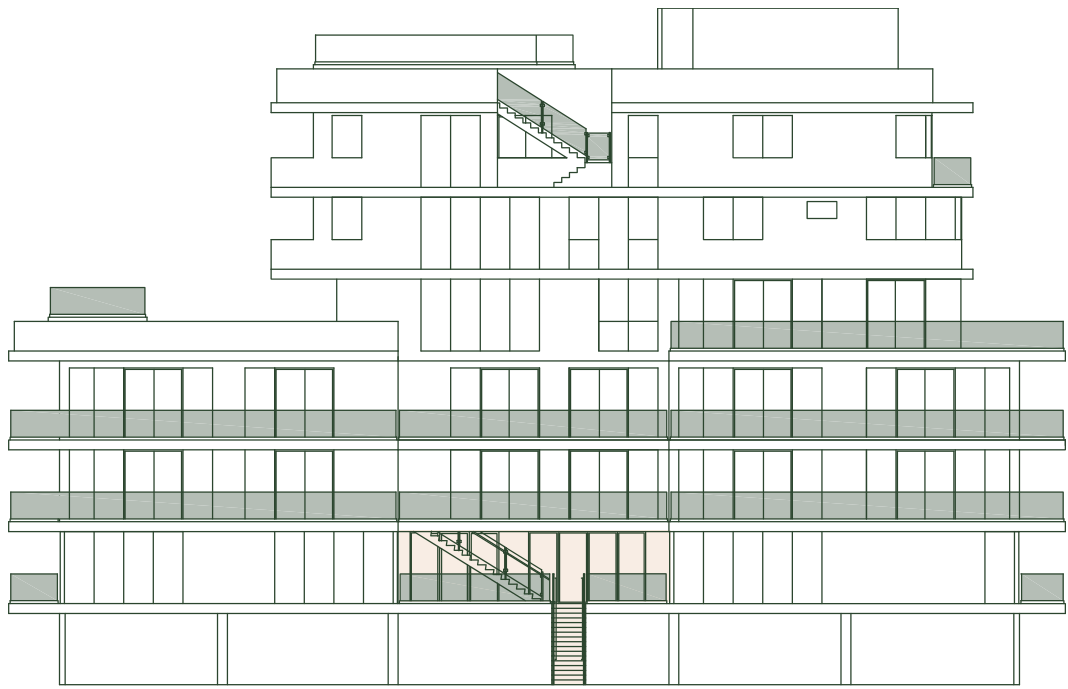
MOTOR
LOBBY

ELEV.

PRIVATE
STORAGE

NORTH

EAST



Ground Floor

Building Entrance

Amenities

Residence Floors

Private Penthouse Rooftop

SOUTH
93RD ST

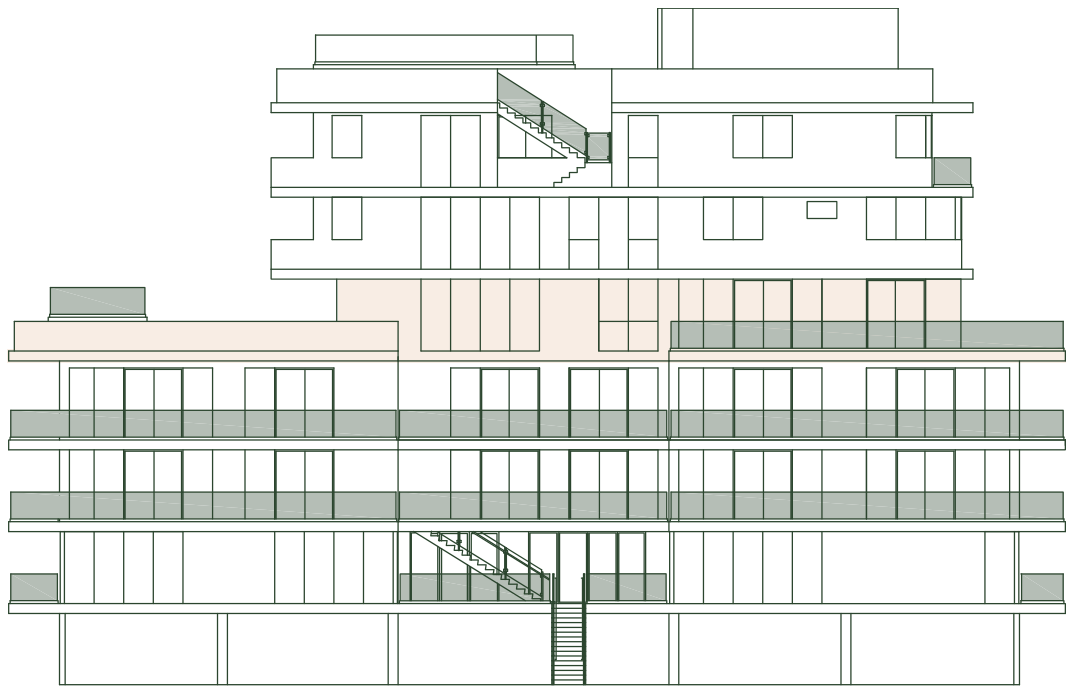
WEST

ELEV.

COURTYARD
LOBBY

NORTH

EAST



Ground Floor

Building Entrance

Amenities

Residence Floors

Private Penthouse Rooftop

SOUTH
93RD ST

UPPER
POOL DECK

LOWER
POOL DECK

GYM

ELEV.

WEST

EAST

NORTH



Ground Floor

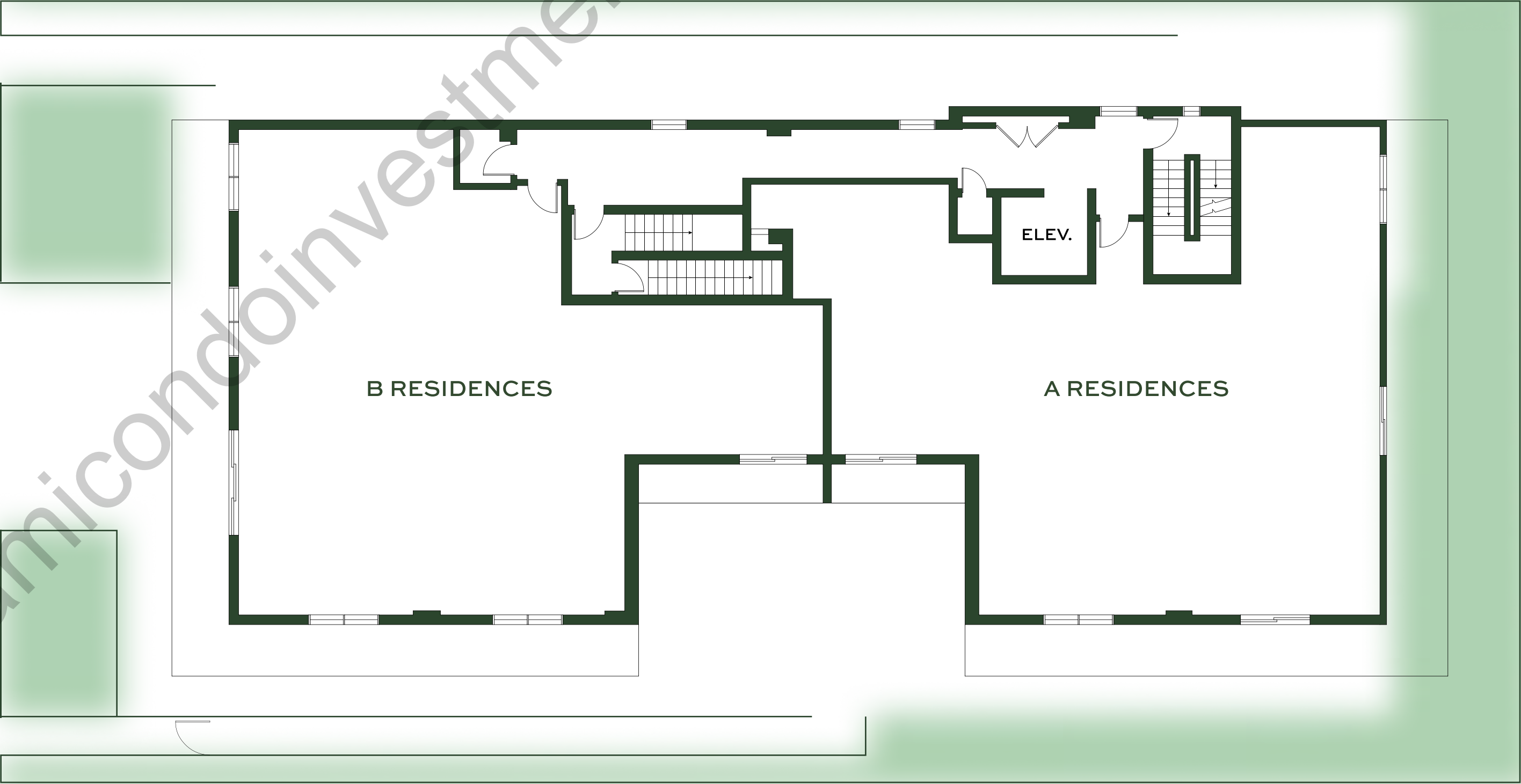
Building Entrance

Amenities

Residence Floors

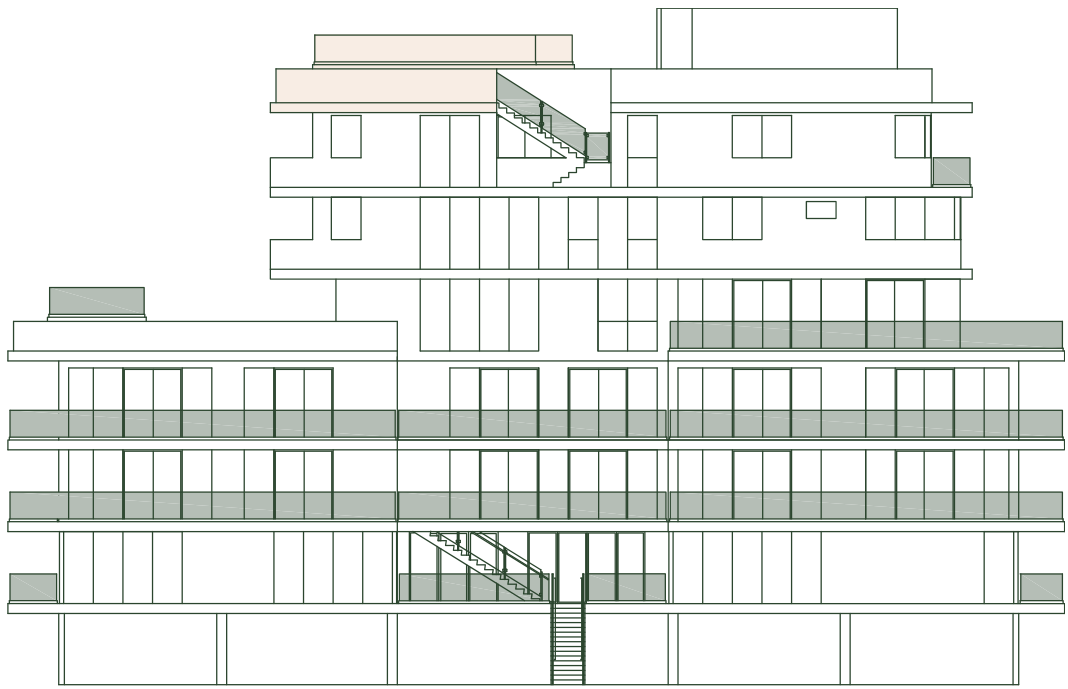
Private Penthouse Rooftop

SOUTH
93RD ST



EAST

NORTH



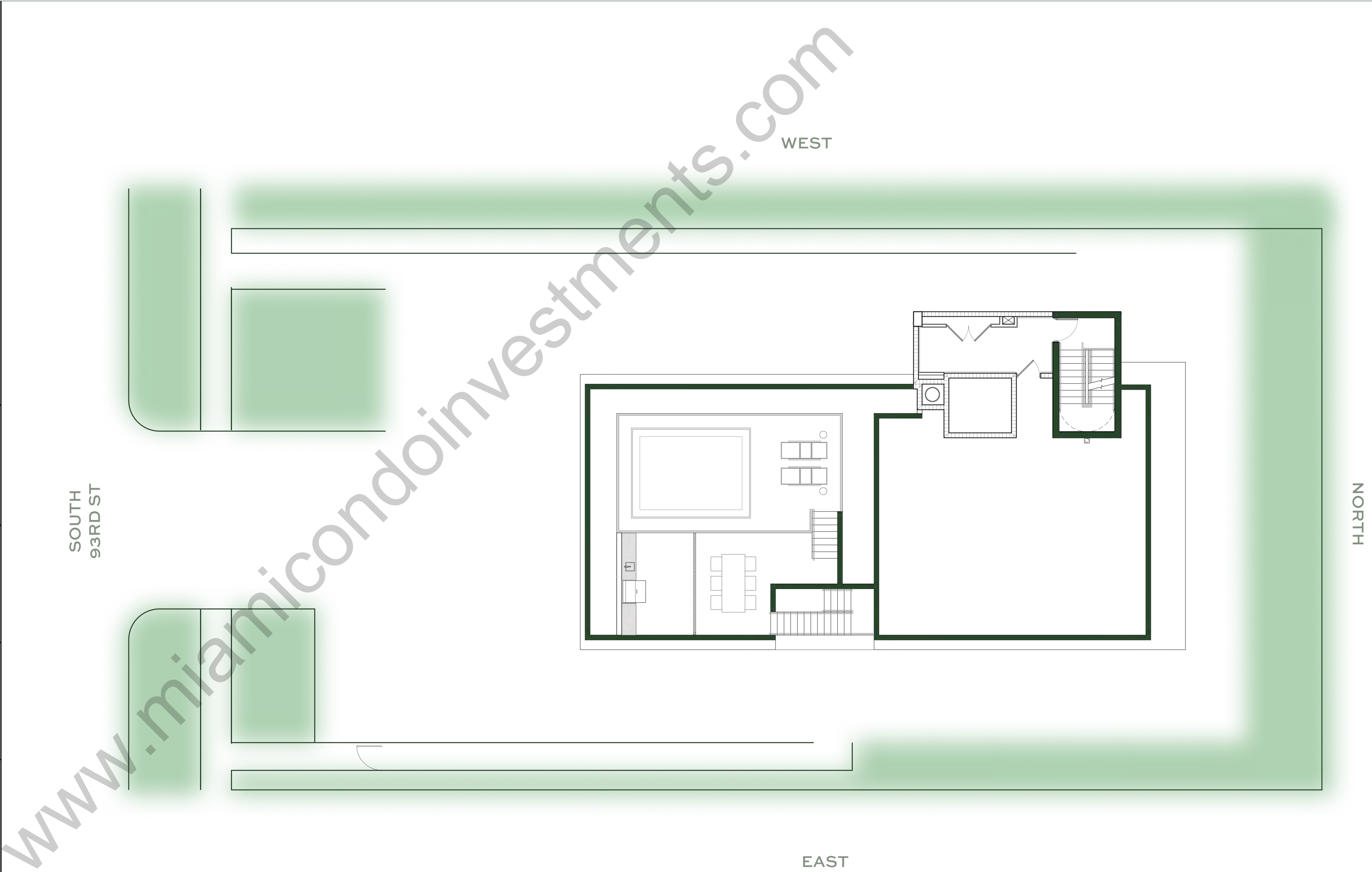
Ground Floor

Building Entrance

Amenities

Residence Floors

Private Penthouse Rooftop





THE RESIDENCES

9 Unique Floor Plans	1-2 Units Per Floor	1 PH Villa Private Rooftop Pool
 2, 3 & 4 Bedrooms	 Private Terraces	 Stainless Steel Bosch Appliances
 2 Parking Spaces per Residence	 Fully Finished	 Wood & Spanish Travertine Finishes













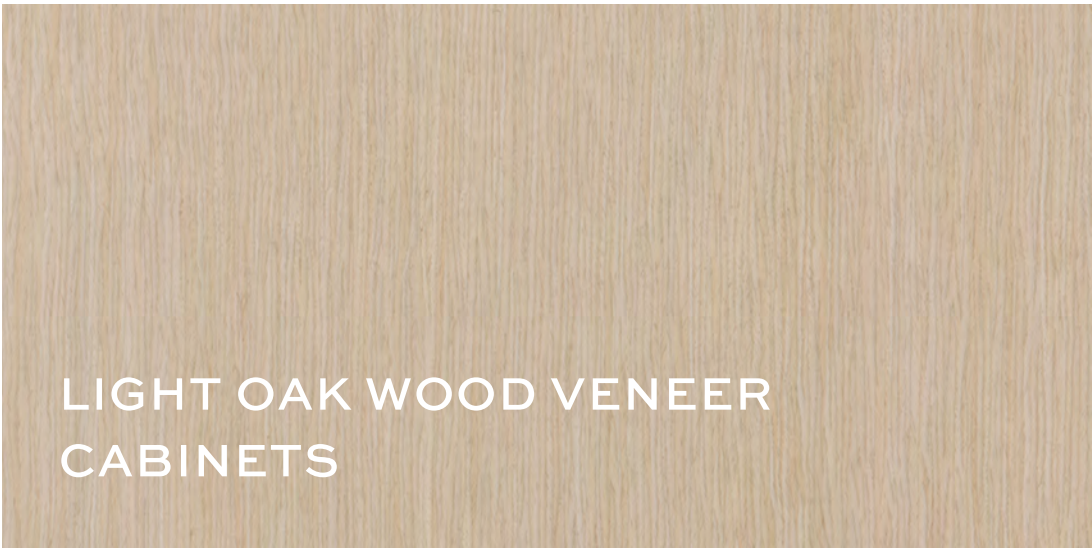


Luxury Finishes
& Features

Kitchen

Primary Bathroom

Standard Bathroom



LIGHT OAK WOOD VENEER
CABINETS



NAVONA TRAVERTINE
BACKSPLASH



WHITE QUARTZ
COUNTERTOPS



EUROPEAN OAK WOOD
FLOORS



BOSCH INTEGRATED REFRIGERATOR



BOSCH DOUBLE OVEN



BOSCH DISHWASHER



VIGO KITCHEN FAUCET
STAINLESS STEEL



BOSCH GAS COOKTOP



BLACO DOUBLE KITCHEN SINK



WHIRLPOOL WASHER & DRYER

Luxury Finishes
& Features

Kitchen

Primary Bathroom

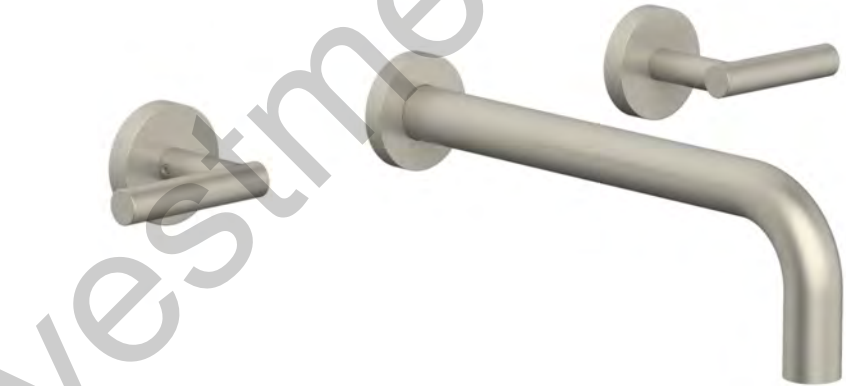
Standard Bathroom



LIGHT OAK WOOD VENEER
VANITY



NAVONA TRAVERTINE
WET WALL & FLOOR



WALL MOUNTED FAUCET
BURNISHED NICKEL



KOHLER UNDERMOUNT SINK



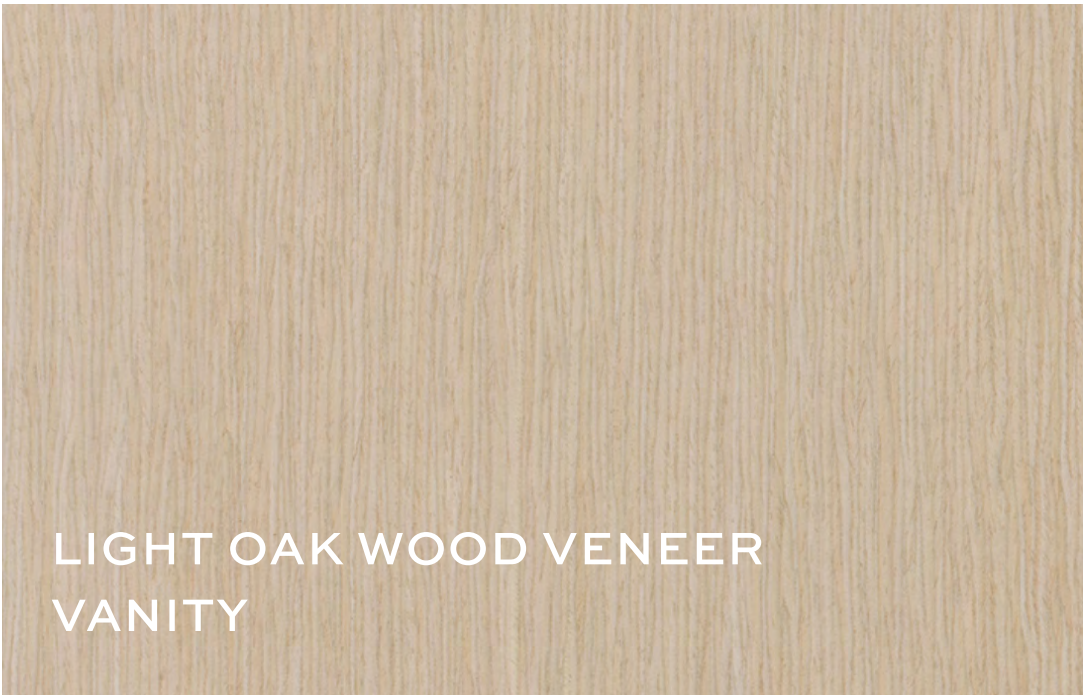
RAIN SHOWER, HAND SHOWER &
CONTROL
BURNISHED NICKEL

Luxury Finishes
& Features

Kitchen

Primary Bathroom

Standard Bathroom



LIGHT OAK WOOD VENEER
VANITY



NAVONA TRAVERTINE
WET WALL & FLOOR



PORCELAIN TILE
WET WALL



DECK MOUNTED FAUCET
BURNISHED NICKEL



KOHLER UNDERMOUNT SINK



SHOWER HEAD, BATHTUB SPOUT &
CONTROL
BURNISHED NICKEL

AVAILABILITY

<div>2A</div> <div>2 Bed 2.5 Bath</div> <div>Interior</div> <div>1,599 SF 149 SQ M</div> <div>Exterior</div> <div>427 SF 40 SQ M</div>	<div>2B</div> <div>3 Bed 3.5 Bath</div> <div>Interior</div> <div>2,121 SF 197 SQ M</div> <div>Exterior</div> <div>458 SF 43 SQ M</div>	<div>3A</div> <div>3 Bed 3.5 Bath</div> <div>Interior</div> <div>2,066 SF 192 SQ M</div> <div>Exterior</div> <div>275 SF 26 SQ M</div>
<div>3B</div> <div>In Contract</div>	<div>4A</div> <div>In Contract</div>	<div>4B</div> <div>In Contract</div>
<div>5A</div> <div>In Contract</div>	<div>PH6</div> <div>4 Bed 3.5 Bath</div> <div>Interior</div> <div>2,367 SF 220 SQ M</div> <div>Exterior</div> <div>199 SF 18 SQ M</div>	<div>PH7</div> <div>3 Bed 3.5 Bath</div> <div>Interior</div> <div>2,140 SF 199 SQ M</div> <div>Exterior</div> <div>487 SF 45 SQ M</div>



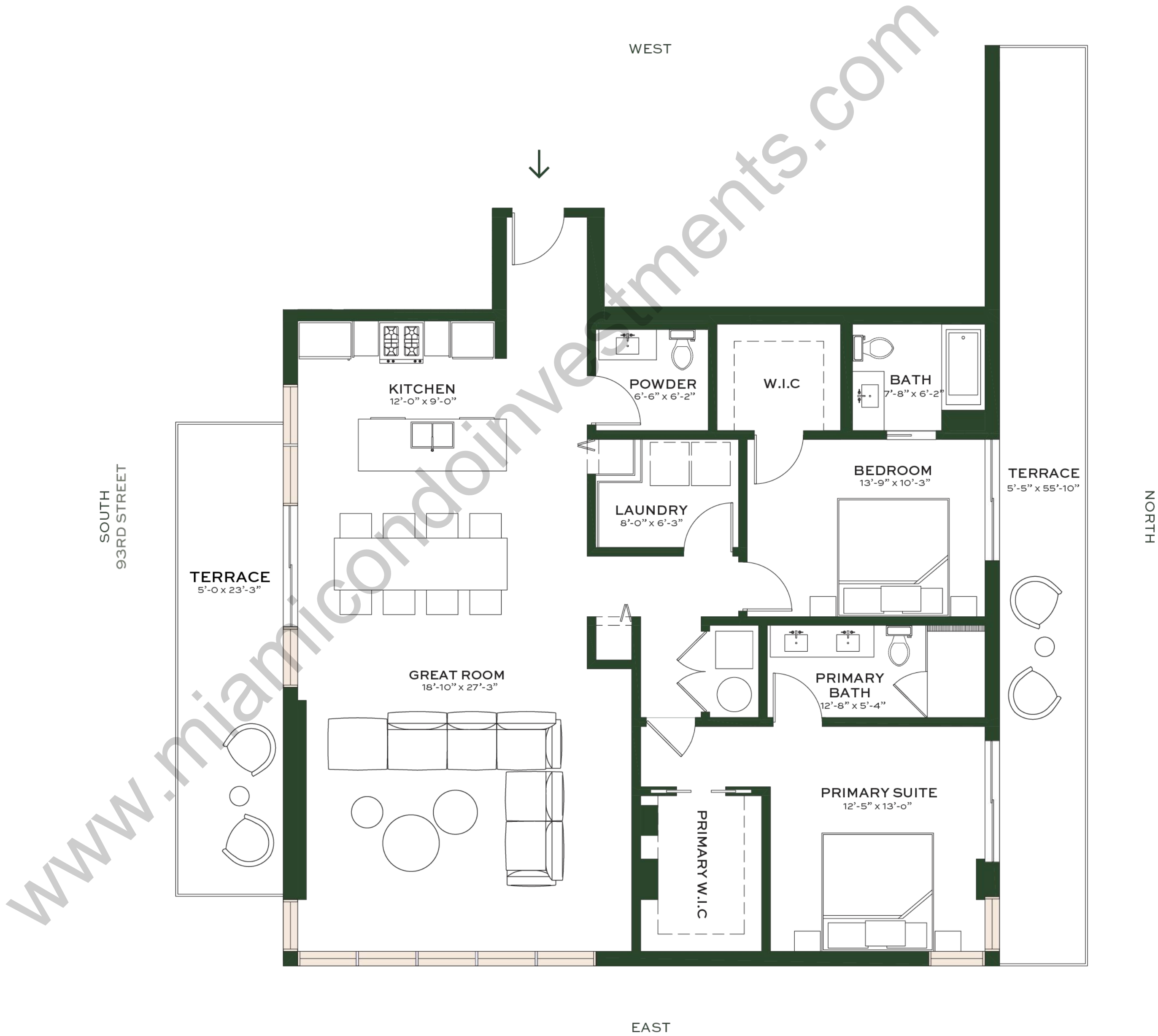
2A
2 Bed | 2.5 Bath

Interior
1,599 SF | 149 SQ M

Exterior
427 SF | 40 SQ M



EAST FACADE



2B
3 Bed | 3.5 Bath

Interior
2,121 SF | 197 SQ M

Exterior
458 SF | 43 SQ M



EAST FACADE

SOUTH
93RD STREET



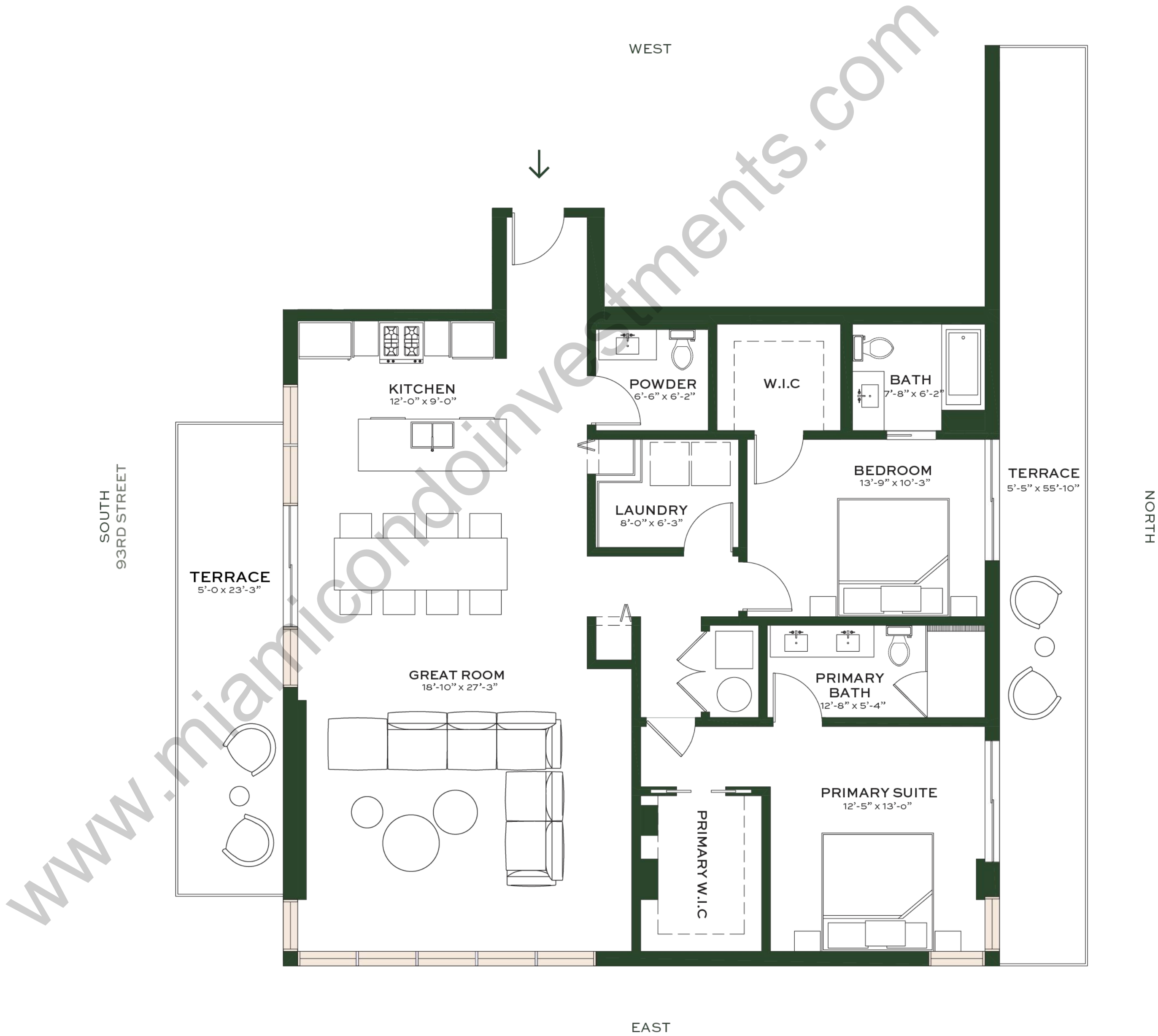
3A
3 Bed | 3.5 Bath

Interior
2,066 SF | 192 SQ M

Exterior
275 SF | 26 SQ M



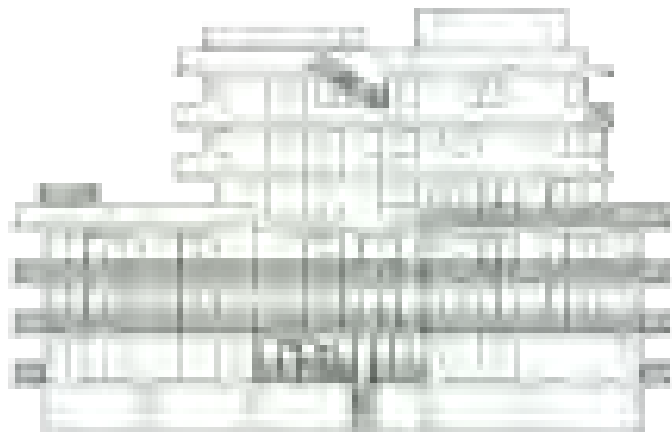
EAST FACADE



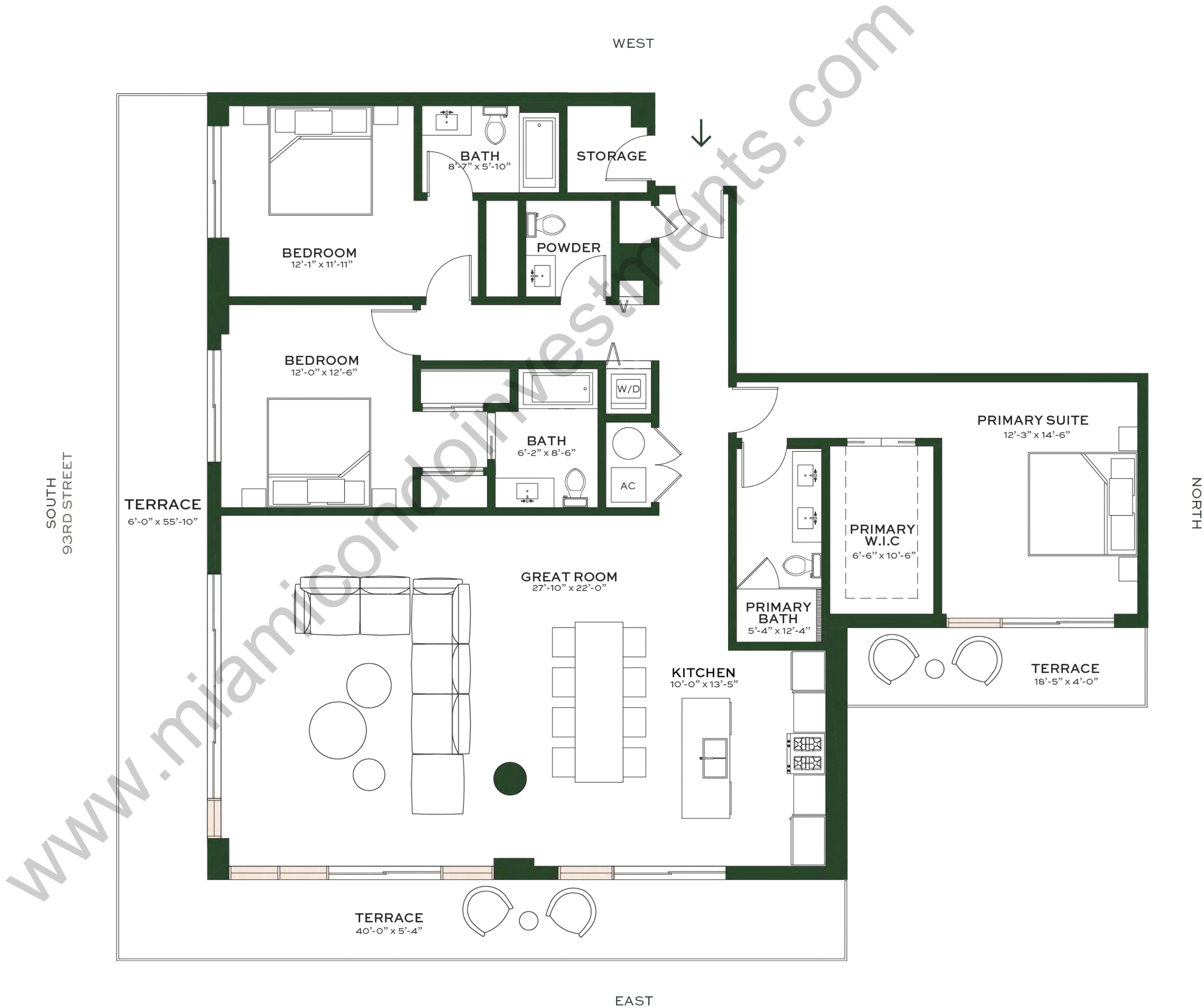
3B
3 Bed | 3.5 Bath

Interior
2,100 SF | 195 SQ M

Exterior
622 SF | 58 SQ M



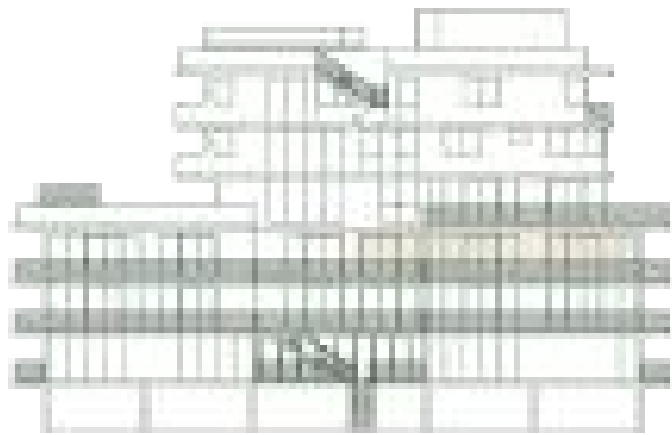
EAST FACADE



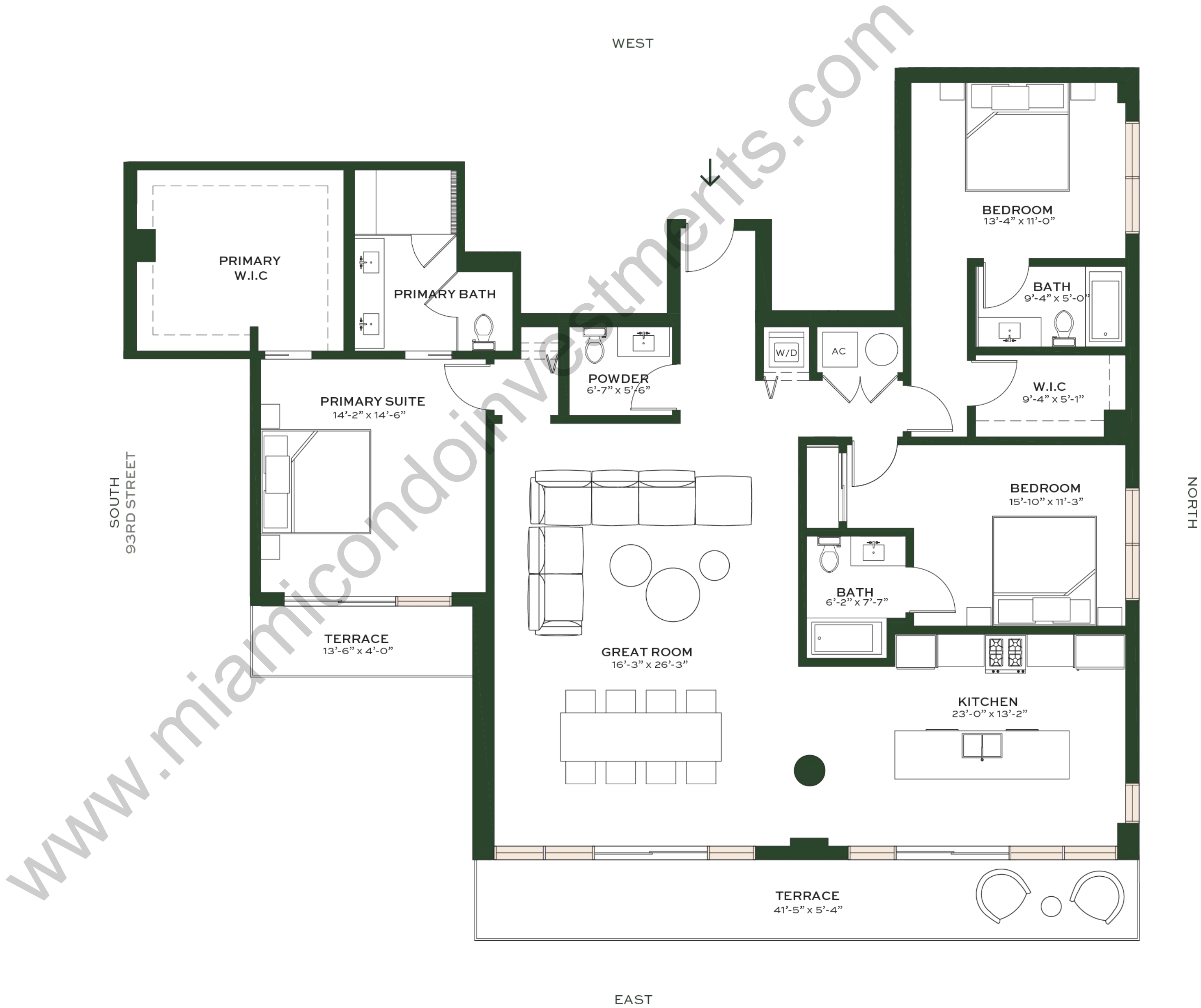
4A
3 Bed | 3.5 Bath

Interior
2,092 SF | 194 SQ M

Exterior
275 SF | 26 SQ M



EAST FACADE



4B
3 Bed | 3.5 Bath

Interior
2,100 SF | 195 SQ M

Exterior
622 SF | 58 SQ M



EAST FACADE

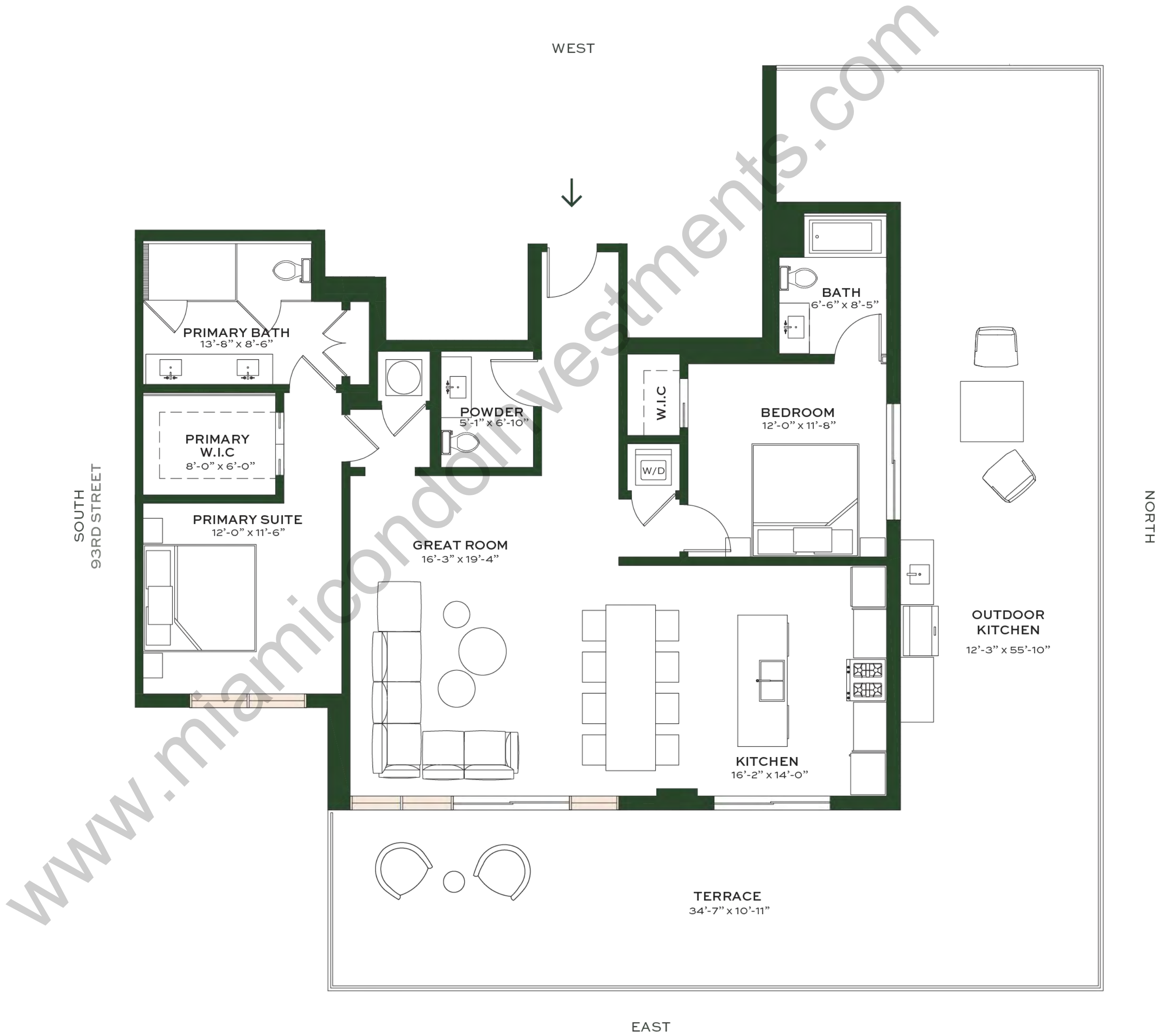
5A
2 Bed | 2.5 Bath

Interior
1,416 SF | 132 SQ M

Exterior
1,016 SF | 99 SQ M



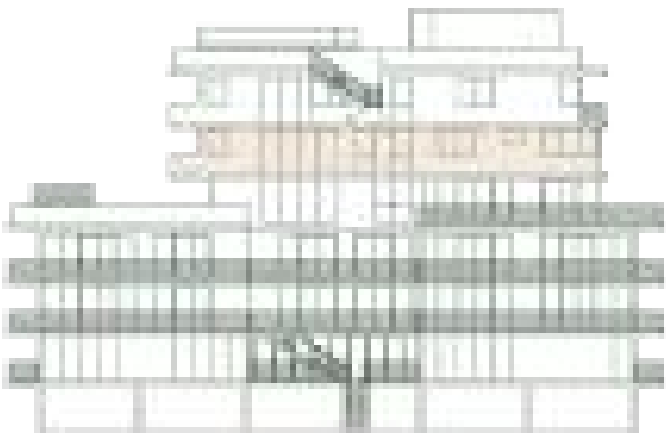
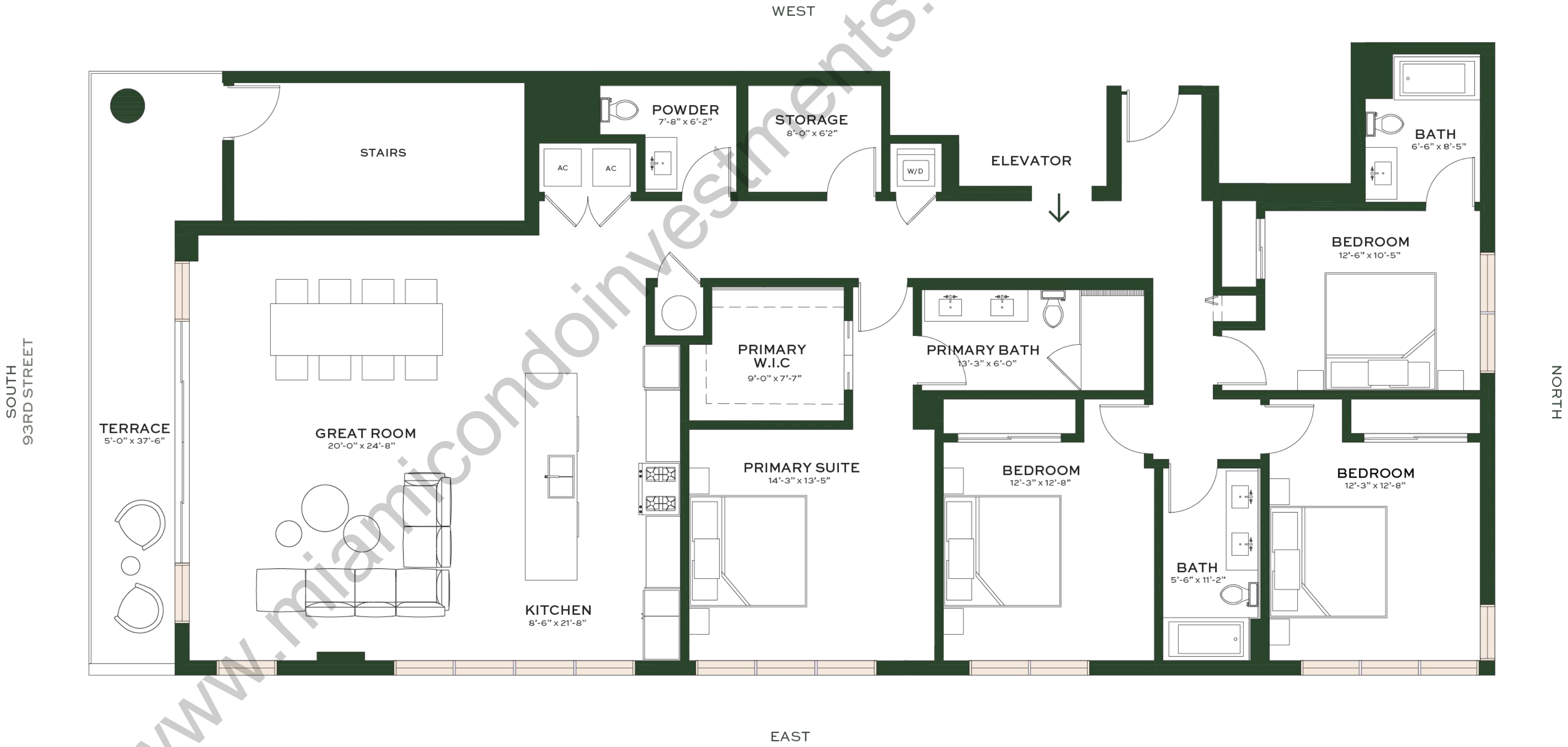
EAST FACADE



PH6
4 Bed | 2.5 Bath

Interior
2,367 SF | 220 SQ M

Exterior
199 SF | 18 SQ M



EAST FACADE

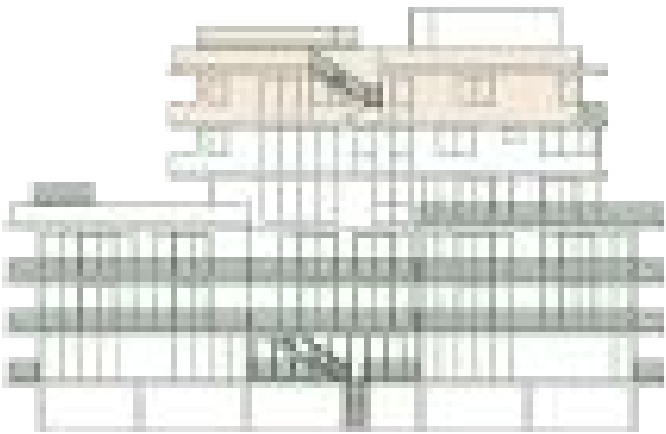
PH7

3 Bed | 3.5 Bath

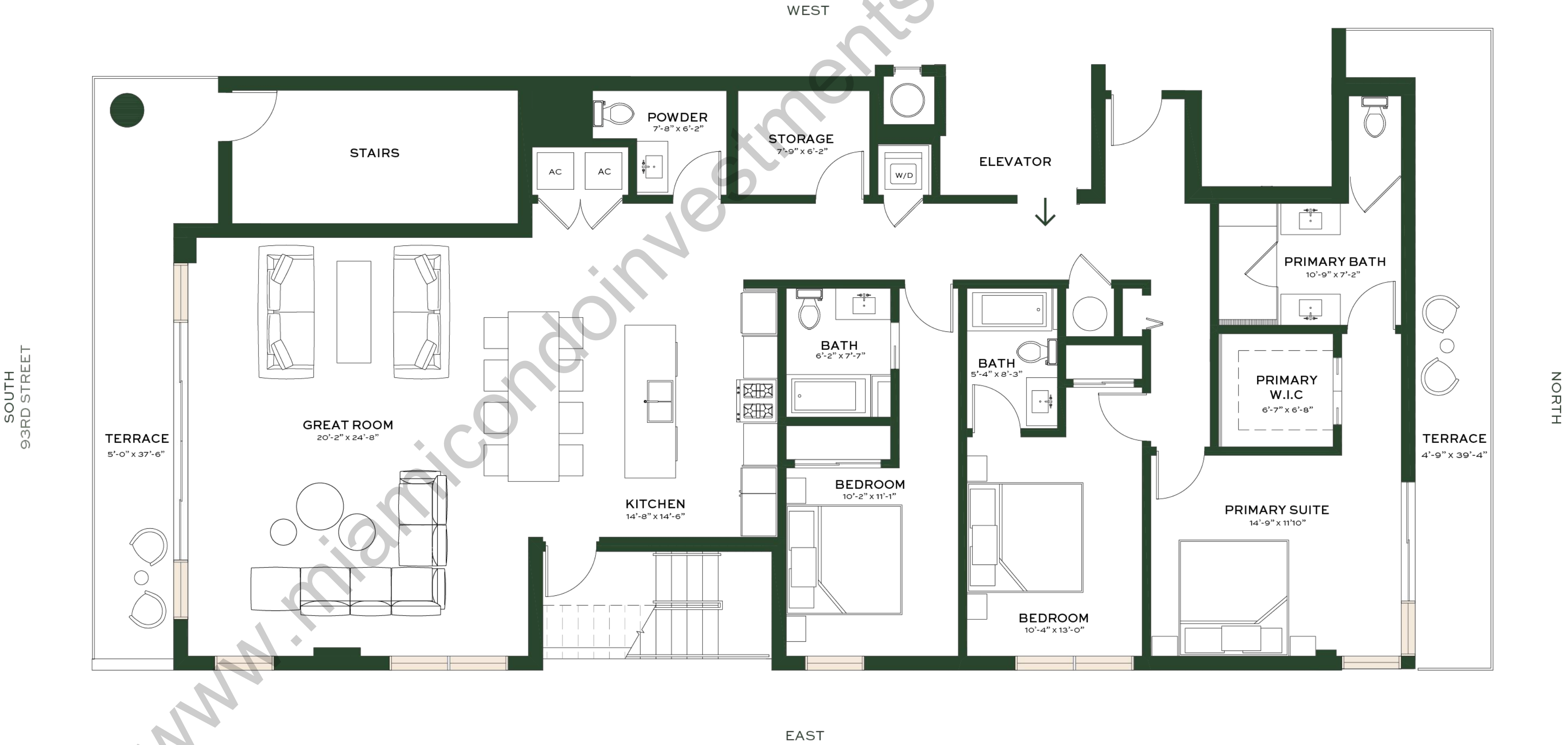
Interior
2,140 SF | 199 SQ M

Exterior
487 SF | 45 SQ M

FIRST FLOOR



EAST FACADE



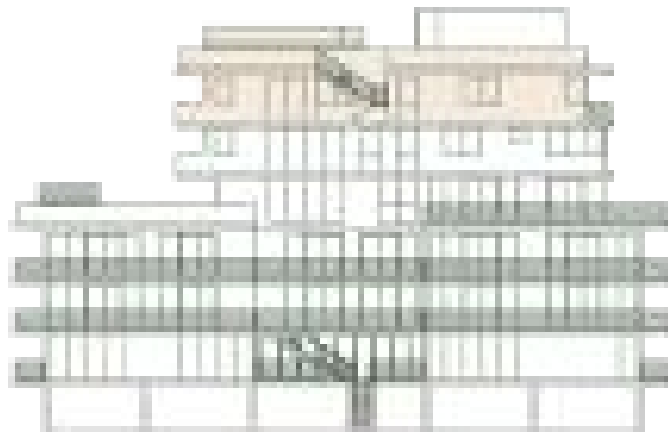
PH7

3 Bed | 3.5 Bath

Interior
2,140 SF | 199 SQ M

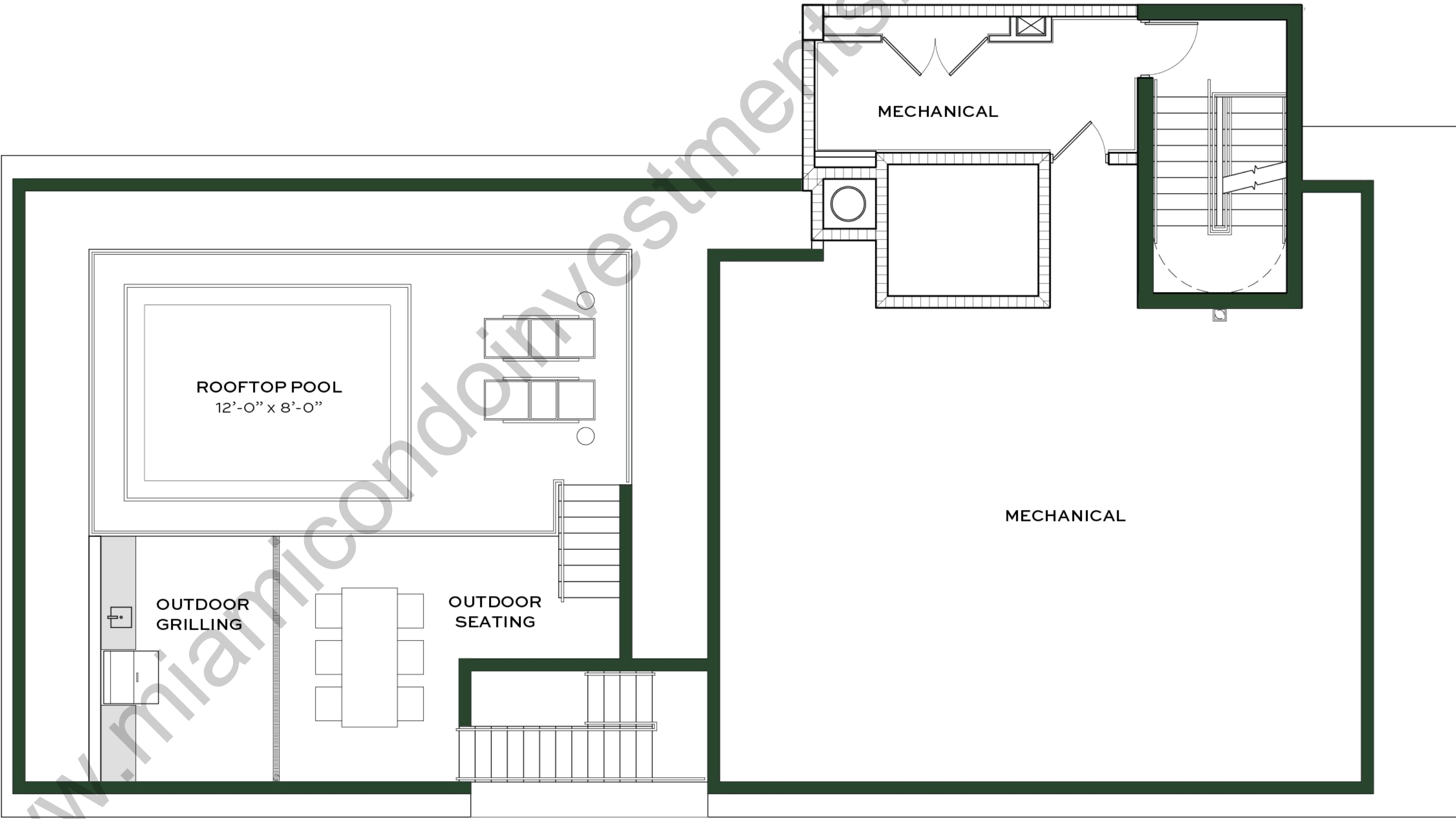
Exterior
487 SF | 45 SQ M

SECOND FLOOR



EAST FACADE

SOUTH
93RD STREET



NORTH

WEST

DEPOSIT SCHEDULE

20%

Upon Contract

10%

Commencement Upon
Construction

10%

Commencement Upon Pouring
Foundation

10%

At Top Off

Balance At Closing

www.miamicondoinvestments.com



www.miamicondoinvestments.com

SOLINA

BAY HARBOR

REDHOEK+

ORAL REPRESENTATIONS CANNOT BE RELIED UPON AS CORRECTLY STATING REPRESENTATIONS OF THE DEVELOPER. FOR CORRECT REPRESENTATIONS, MAKE REFERENCE TO THIS BROCHURE AND TO THE DOCUMENTS REQUIRED BY § 718.503, FLORIDA STATUTES, TO BE FURNISHED BY A DEVELOPER TO A BUYER OR LESSEE.

Neither DDG 1055 BHI LLC nor any of its affiliates or related persons makes any representation, warranty or guarantee, expressed or implied, in respect of any statement or information made or contained in these materials. Neither DDG 1055 BHI LLC Nor any of its directors, officers, employees or agents has or will have any responsibility or liability arising out of, or related to, these materials or the transactions contemplated by these materials, including any liability or responsibility for any statement or information made or contained in or the use of these materials. The square footages of Units set forth in this brochure and/or these marketing materials, and/or the methodology used to calculate such square footages, may differ from the square footages of Units set forth in the other documents required by §718.503, Florida Statutes, to be furnished by a Developer to a buyer or lessee, and/or the methodology used to calculate such square footages.