

# WEST UNIT B

2 BEDROOMS  
2 BATHROOMS

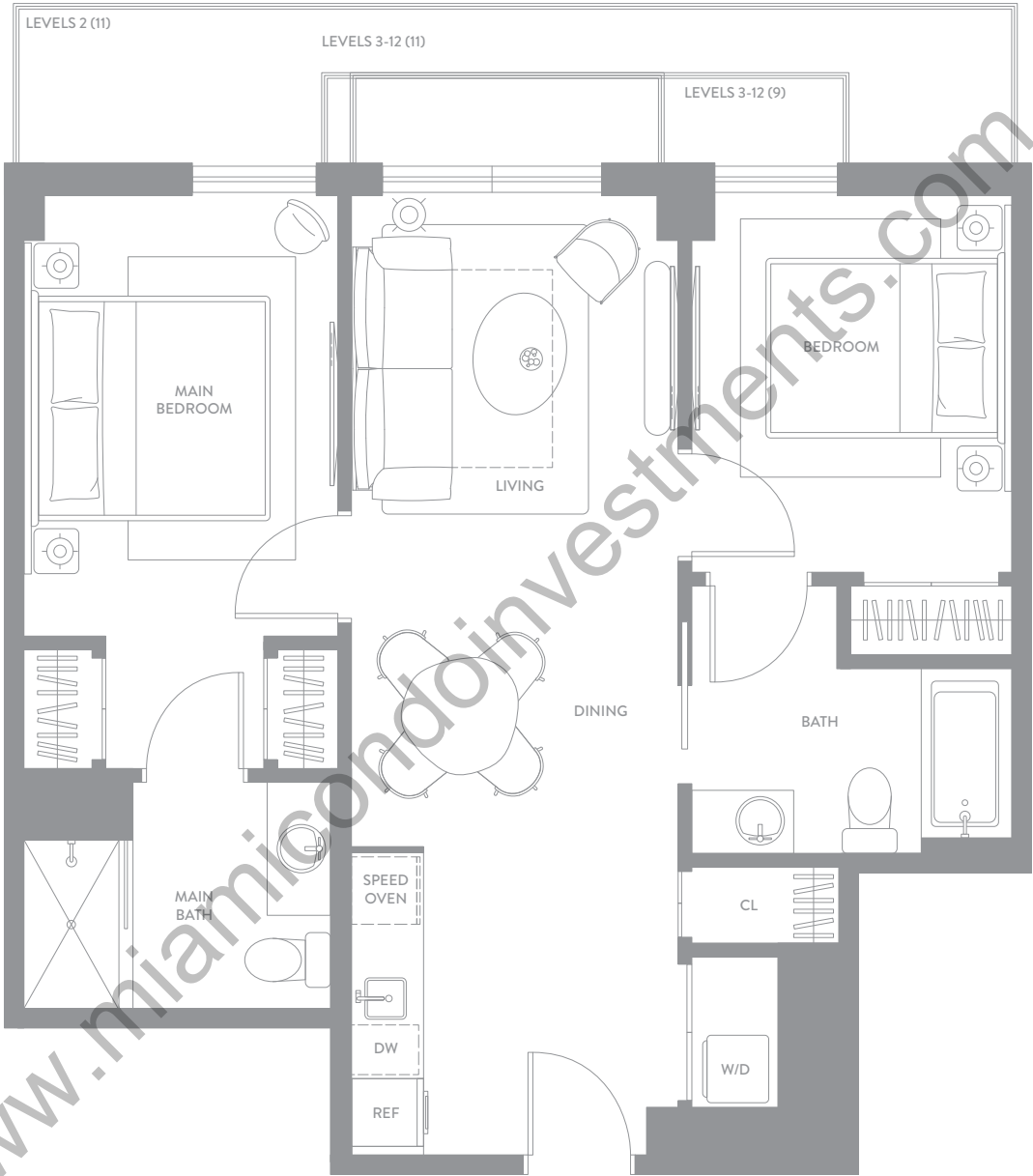
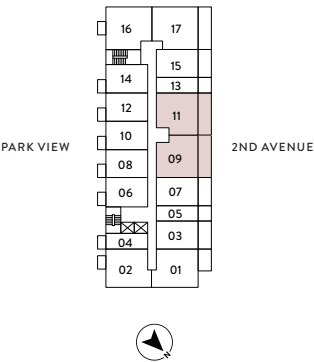
LINES 09 & 11  
FLOORS 02 TO 12

INTERIOR  
800 sf | 75 m<sup>2</sup>

EXTERIOR  
51 sf | 5 m<sup>2</sup>  
38 sf | 4 m<sup>2</sup>

TOTAL  
851 sf | 80 m<sup>2</sup>  
838 sf | 78 m<sup>2</sup>

2nd Floor Exterior  
303 sf | 28 m<sup>2</sup>



domus<sup>®</sup>  
FLATS

BRICKELL PARK

® ORAL REPRESENTATIONS CANNOT BE RELIED UPON AS CORRECTLY STATING THE REPRESENTATIONS OF THE DEVELOPER. FOR CORRECT REPRESENTATIONS, MAKE REFERENCE TO THIS BROCHURE AND TO THE DOCUMENTS REQUIRED BY SECTION 718.503, FLORIDA STATUTES, TO BE FURNISHED BY A DEVELOPER TO A BUYER OR LESSEE. Stated square footages and dimensions of residences are measured to the exterior boundaries of the exterior walls and the centerline of interior demising walls between units and in fact vary from the square footages and dimensions that would be determined by using the description and definition of the "Unit" set forth in the Declaration of Condominium, which generally only includes the interior airspace between the perimeter walls and excludes all interior structural components and other common elements. The method of measurement used in these materials is generally used in sales materials and is provided to allow a prospective buyer to compare the Units with units in other projects that utilize the same method. Refer to Exhibit "2" to the Declaration of Condominium for the unit dimensions calculated based on the description and definition of the "Unit" set forth in the Declaration. Terraces are not part of the Unit. Measurements of rooms set forth on this floor plan are generally taken at the farthest points of each given room (as described above and as if the room were a perfect rectangle), without regard for any cutouts or variations. Accordingly, the interior air space dimensions of the actual room will typically be smaller than the product obtained by multiplying the stated length and width. All measurements are estimates based on preliminary plans and will vary with actual construction. All floor plans, specifications and other development plans are proposed and conceptual only, and are subject to change and will not necessarily accurately reflect the final plans and specifications.

EXCLUSIVE SALES & MARKETING BY CERVERA<sup>®</sup> DEVELOPED BY NORTH  
REAL ESTATE • 1969 DEVELOPMENT