

RESIDENCE 06

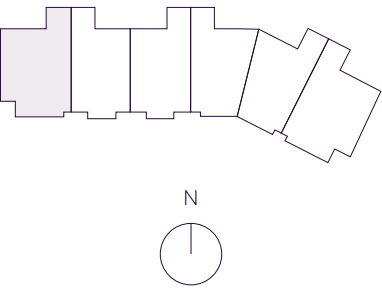
INTERIOR	EXTERIOR
5,058 F ²	1,943 F ²
470 M ²	181 M ²

TOTAL
7,001 F²
651 M²

*

4 BEDROOMS
5 BATHROOMS
POWDER ROOM
FAMILY ROOM
SERVICE SUITE
LIVING ROOM
OFFICE

OCEAN VIEW



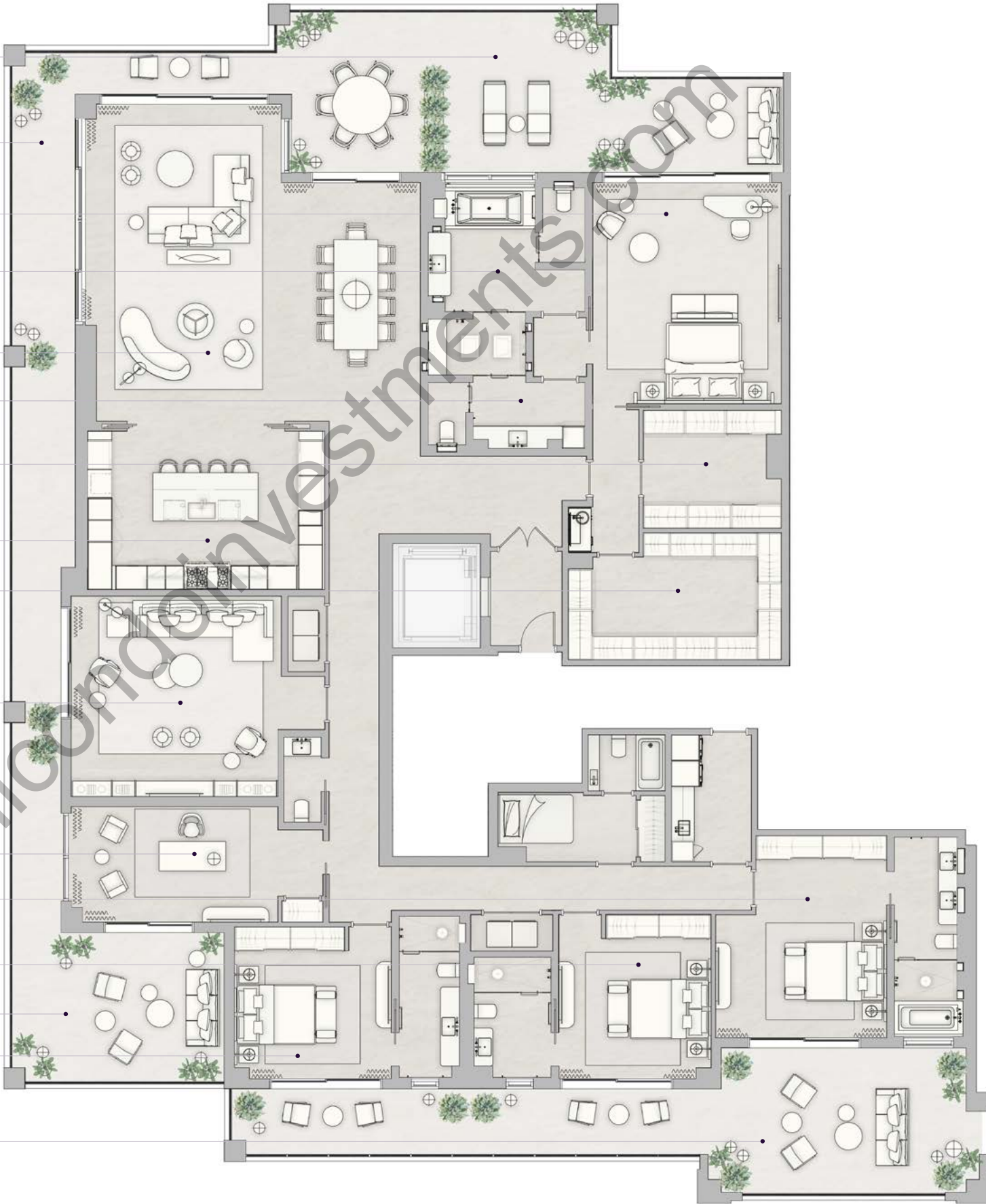
THE RESIDENCES
SIX FISHER ISLAND
⑥

6 Fisher Island Drive, Fisher Island, FL 33109
305.873.3852 — 6-fisherisland.com

Douglas Elliman
Development Marketing

The dimensions stated for this floor plan are approximate because there are various recognized methods for calculating the square footage of a unit. The square footage stated here is calculated from the exterior boundaries of the exterior walls to the centerline of interior demising walls without deductions for cutouts, curves, or architectural features. This method typically results in quoted dimensions greater than the dimensions that would be determined by using other accepted methods. The definition of "Unit" and the calculation method to be relied upon is set forth by the Developer in Developer's prospectus which method may result in a square footage calculation less than the result of the calculation method used here. Dimension and unit configuration is not guaranteed and may change during construction. Depictions of furnishings, fixtures and other items of personal property are not included with purchase. Consult the Developer's prospectus to understand Unit dimensions, to learn what is included with purchase and by payment of regular condominium assessments, and to learn all terms and conditions. 2023 © PRH Parcel 7 Owner, LLC, with all rights reserved.

- BALCONY
68'-6" x 14'-4"
- BALCONY
92'-1" x 5'-7"
- PRIMARY BEDROOM
19'-9" x 16'-9"
- HER BATHROOM
17'-1" x 13'-11"
- LIVING ROOM
28'-4" x 29'-9"
- HIS BATHROOM
12'-2" x 13'-11"
- HIS WARDROBE
10'-6" x 12'-3"
- KITCHEN
14'-2" x 21'-1"
- HER WARDROBE
18'-11" x 11'-4"
- FAMILY ROOM
17'-11" x 22'-6"
- OFFICE
10'-4" x 22'-8"
- BEDROOM 2
18'-1" x 15'-2"
- BEDROOM 3
13'-6" x 14'-8"
- BALCONY
18'-10" x 13'-4"
- BEDROOM 4
13'-7" x 13'-11"
- BALCONY
66'-5" x 13'



N 25° 45.8255



W 80° 8.4428