

# RESIDENCE 06

## Alternate

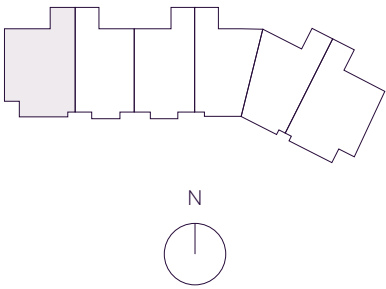
INTERIOR	EXTERIOR
5,058 F <sup>2</sup>	1,943 F <sup>2</sup>
470 M <sup>2</sup>	181 M <sup>2</sup>

TOTAL  
7,001 F<sup>2</sup>  
651 M<sup>2</sup>

\*

5 BEDROOMS  
6 BATHROOMS  
POWDER ROOM  
OFFICE  
SERVICE SUITE  
LIVING ROOM

OCEAN VIEW



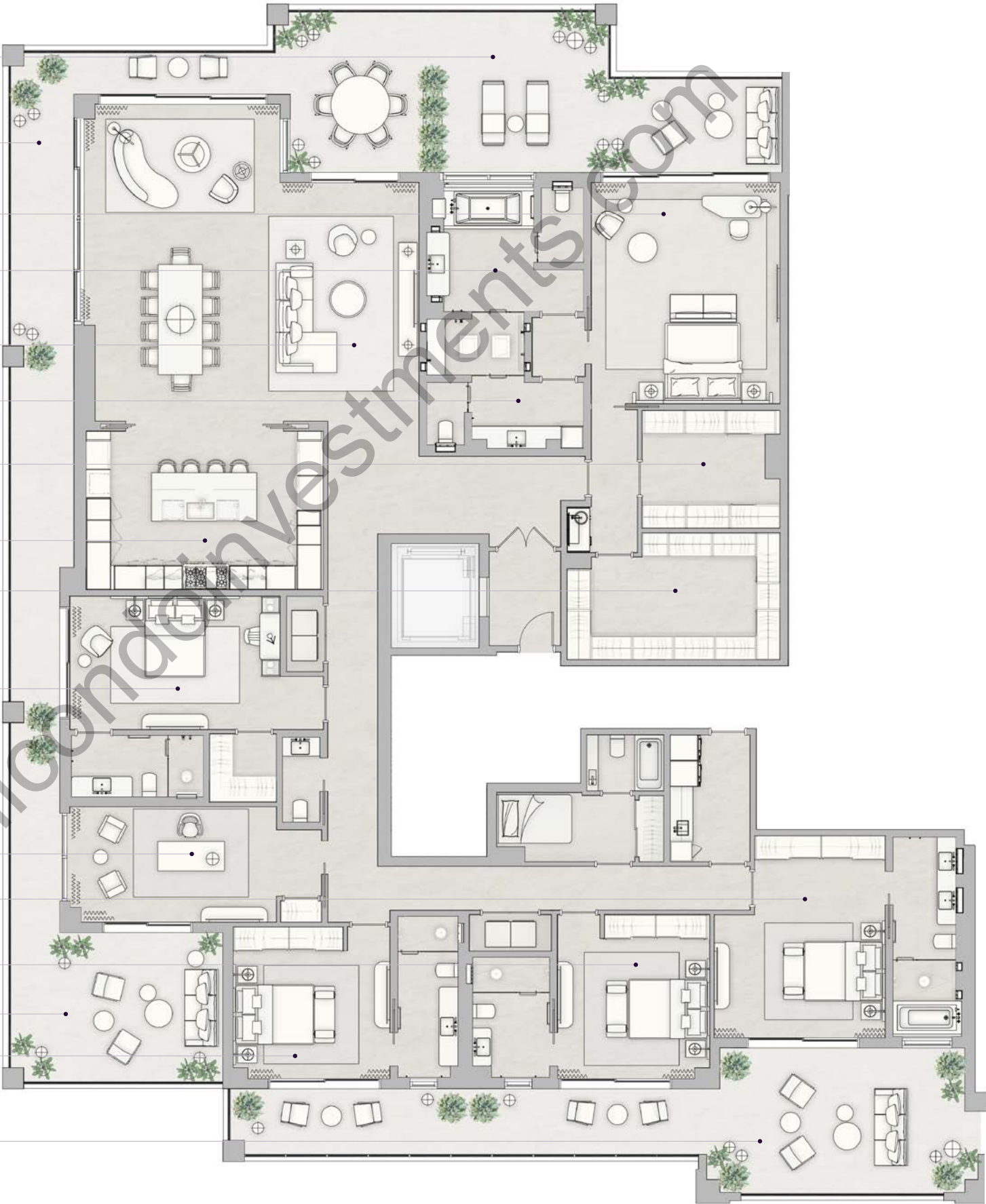
THE RESIDENCES  
SIX FISHER ISLAND  
⑥

6 Fisher Island Drive, Fisher Island, FL 33109  
305.873.3852 — 6-fisherisland.com

**Douglas Elliman**  
Development Marketing

The dimensions stated for this floor plan are approximate because there are various recognized methods for calculating the square footage of a unit. The square footage stated here is calculated from the exterior boundaries of the exterior walls to the centerline of interior demising walls without deductions for cutouts, curves, or architectural features. This method typically results in quoted dimensions greater than the dimensions that would be determined by using other accepted methods. The definition of "Unit" and the calculation method to be relied upon is set forth by the Developer in Developer's prospectus which method may result in a square footage calculation less than the result of the calculation method used here. Dimension and unit configuration is not guaranteed and may change during construction. Depictions of furnishings, fixtures and other items of personal property are not included with purchase. Consult the Developer's prospectus to understand Unit dimensions, to learn what is included with purchase and by payment of regular condominium assessments, and to learn all terms and conditions. 2023 © PRH Parcel 7 Owner, LLC, with all rights reserved.

- BALCONY  
68'-6" x 14'-4"
- BALCONY  
92'-1" x 5'-7"
- PRIMARY BEDROOM  
19'-9" x 16'-9"
- HER BATHROOM  
17'-1" x 13'-11"
- LIVING ROOM  
28'-4" x 29'-9"
- HIS BATHROOM  
12'-2" x 13'-11"
- HIS WARDROBE  
10'-6" x 12'-3"
- KITCHEN  
14'-2" x 21'-1"
- HER WARDROBE  
18'-11" x 11'-4"
- SECONDARY BEDROOM  
11'-11" x 22'-6"
- OFFICE  
10'-4" x 22'-8"
- BEDROOM 2  
18'-1" x 15'-2"
- BEDROOM 3  
13'-6" x 14'-8"
- BALCONY  
18'-10" x 13'-4"
- BEDROOM 4  
13'-7" x 13'-11"
- BALCONY  
66'-5" x 13'



N 25° 45.8255



\*

W 80° 8.4428