

RESIDENCE 01

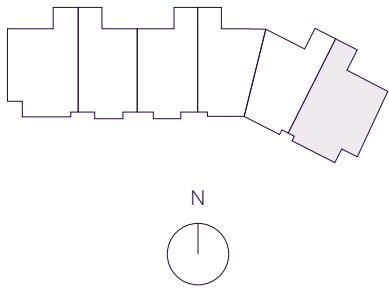
INTERIOR	EXTERIOR
4,980 F ²	1,305 F ²
463 M ²	122 M ²

TOTAL
6,285 F²
585 M²

*

5 BEDROOMS
6 BATHROOMS
POWDER ROOM
GREAT ROOM
SERVICE SUITE

OCEAN VIEW



THE RESIDENCES
SIX FISHER ISLAND
⑥

6 Fisher Island Drive, Fisher Island, FL 33109
305.873.3852 — 6-fisherisland.com

DouglasElliman
Development Marketing

The dimensions stated for this floor plan are approximate because there are various recognized methods for calculating the square footage of a unit. The square footage stated here is calculated from the exterior boundaries of the exterior walls to the centerline of interior demising walls without deductions for cutouts, curves, or architectural features. This method typically results in quoted dimensions greater than the dimensions that would be determined by using other accepted methods. The definition of "Unit" and the calculation method to be relied upon is set forth by the Developer in Developer's prospectus which method may result in a square footage calculation less than the result of the calculation method used here. Dimension and unit configuration is not guaranteed and may change during construction. Depictions of furnishings, fixtures and other items of personal property are not included with purchase. Consult the Developer's prospectus to understand Unit dimensions, to learn what is included with purchase and by payment of regular condominium assessments, and to learn all terms and conditions. 2023 © PRH Parcel 7 Owner, LLC, with all rights reserved.

PRIMARY BEDROOM
20'-1" x 20'-1"
BALCONY
16'-6" x 48'-1"

HER WARDROBE
14'-1" x 12'-11"

HER BATHROOM
17'-2" x 13'-11"

GREAT ROOM
32'-3" x 29'-6"

HIS WARDROBE
8'-10" x 12'-11"

HIS BATHROOM
12'-3" x 13'-11"

BALCONY
39'-3" x 4'-8"

KITCHEN
13'-5" x 22'-2"

BEDROOM 2
17'-6" x 13'-1"

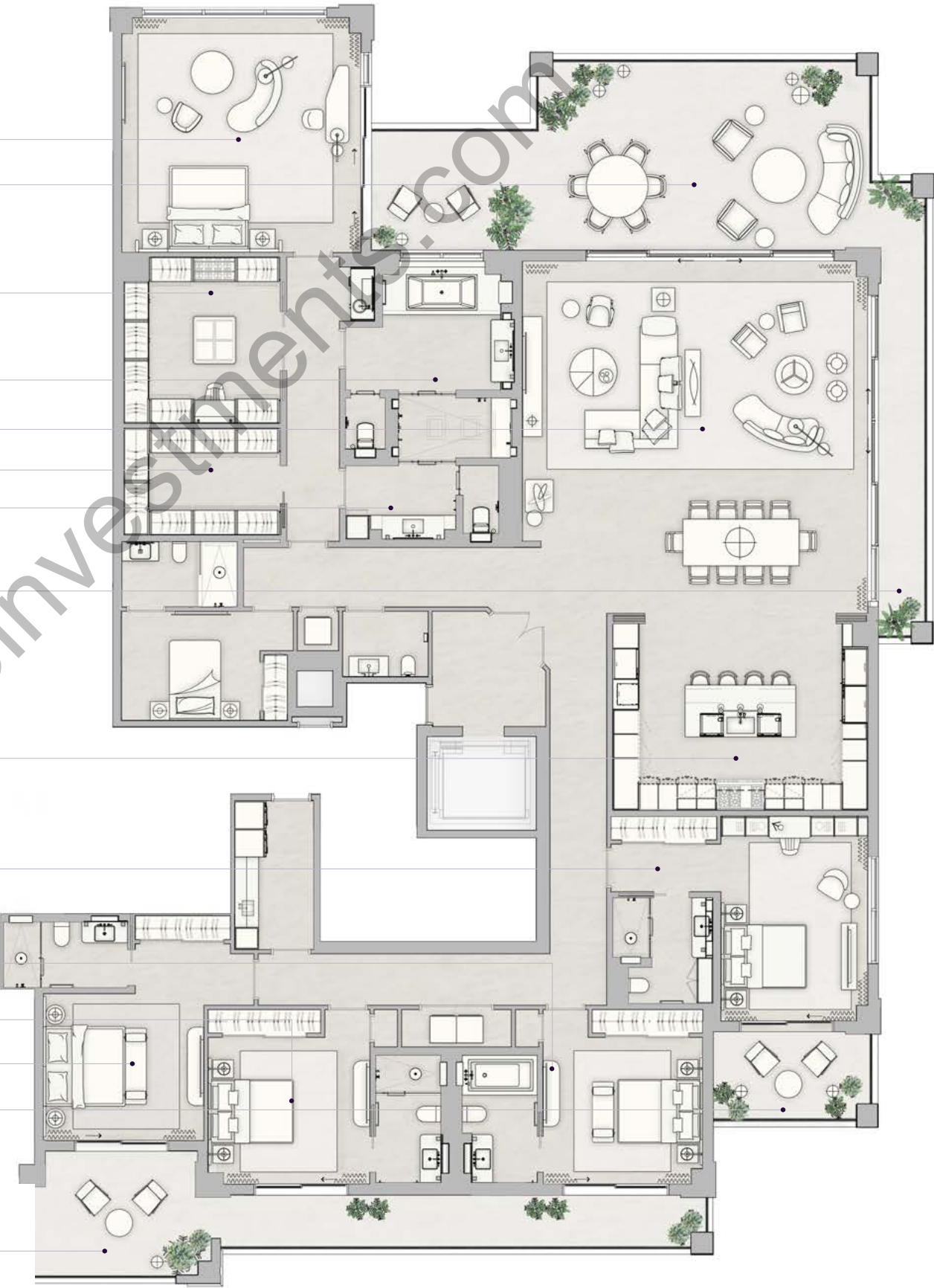
BEDROOM 3
12'-6" x 14'-6"

BEDROOM 4
12'-6" x 14'-6"

BEDROOM 5
12'-7" x 13'-6"

BALCONY
14' x 8'

BALCONY
58'-2" x 11'-1"



N 25° 45.8255



W 80° 8.4428