

Flat A
1 bedroom

Total Area: 709 to 746 sq ft.

AC Area: 637 sq ft.

Balcony Area: 72 sq ft.

Levels: 10,11,12,14,15,16,17,
18,19,20,21,23,25,27



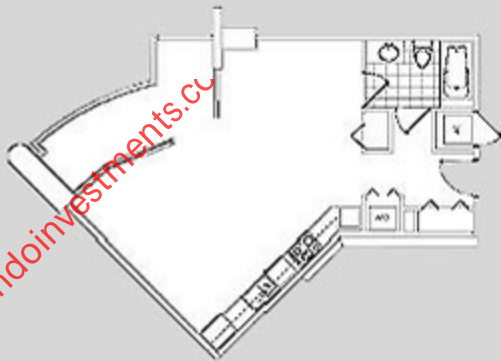
Flat A'
1 bedroom

Total Area: 746 sq ft.

AC Area: 628sq ft.

Balcony Area: 118 sq ft.

Levels: 10,11,12,14,15,16,17,
18,19,20



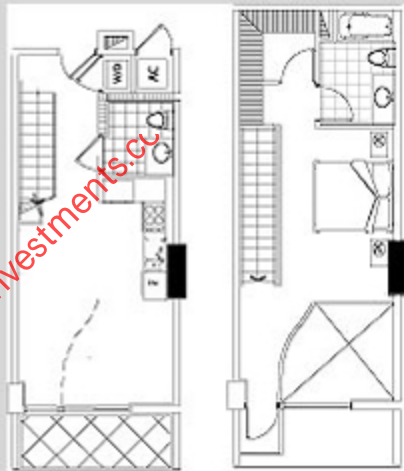
Split B'
1 bedroom

Total Area: 884 sq ft.

AC Area: 789 sq ft.

Balcony Area: 95 sq ft.

Levels: 21 thru. 36



FLAT R

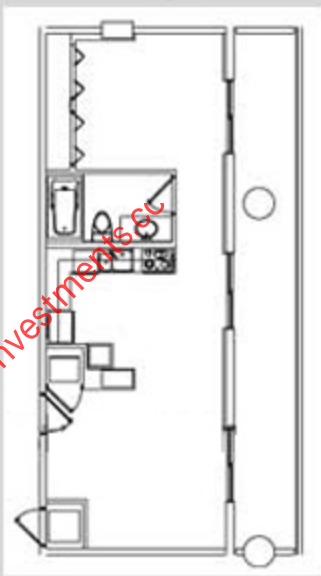
1 Bedroom area 870 sq ft.

Total Area: 870 sq ft.

AC Area: 639 sq ft.

Balcony Area: 231 sq ft.

Levels: 3,4,5,6,7



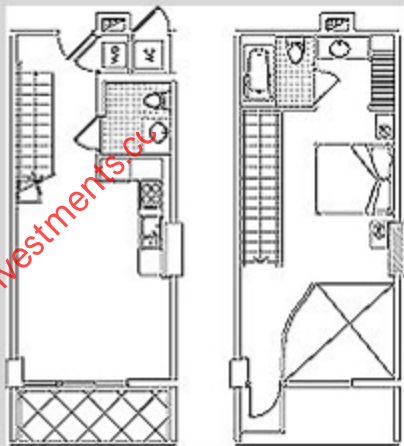
Split B
1 bedroom

Total Area: 836 sq ft.

AC Area: 741 sq ft.

Balcony Area: 95 sq ft.

Levels: 10,12,15,17,19



Split C
1 bedroom

Total Area: 1,231 sq ft.

AC Area: 1,065 sq ft.

Balcony Area: 166 sq ft.

Levels: 21,23,25,27



www.miamicondoinvestments.com

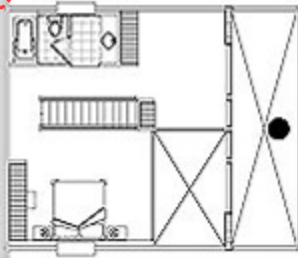
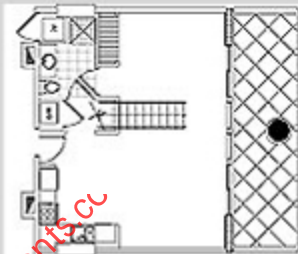
Split D
1 bedroom

Total Area: 1,483 sq ft.

AC Area: 1,248 sq ft.

Balcony Area: 235 sq ft.

Levels: 29,31,33,35



www.miamicondoinvestments.com

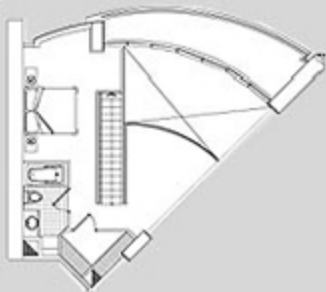
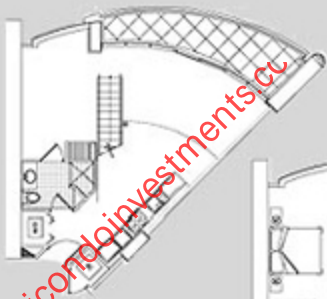
Split E
1 bedroom

Total Area: 1,412 sq ft.

AC Area: 1,246 sq ft.

Balcony Area: 166 sq ft.

Levels: 12,15,17,19



www.miamicondoinvestments.com

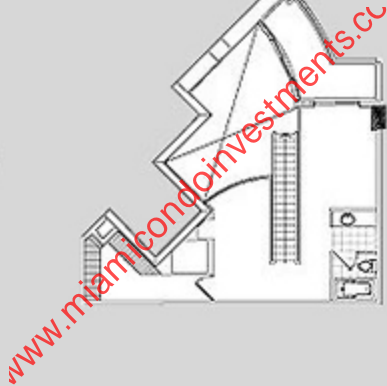
Split F
1 bedroom

Total Area: 1,286 sq ft.

AC Area: 1,170 sq ft.

Balcony Area: 116 sq ft.

Levels: 21 Thru. 35



Flat G
1 bedroom

Total Area: 910 sq ft.

AC Area: 744 sq ft.

Balcony Area: 166 sq ft.

Levels: 5-6-7-10-11

