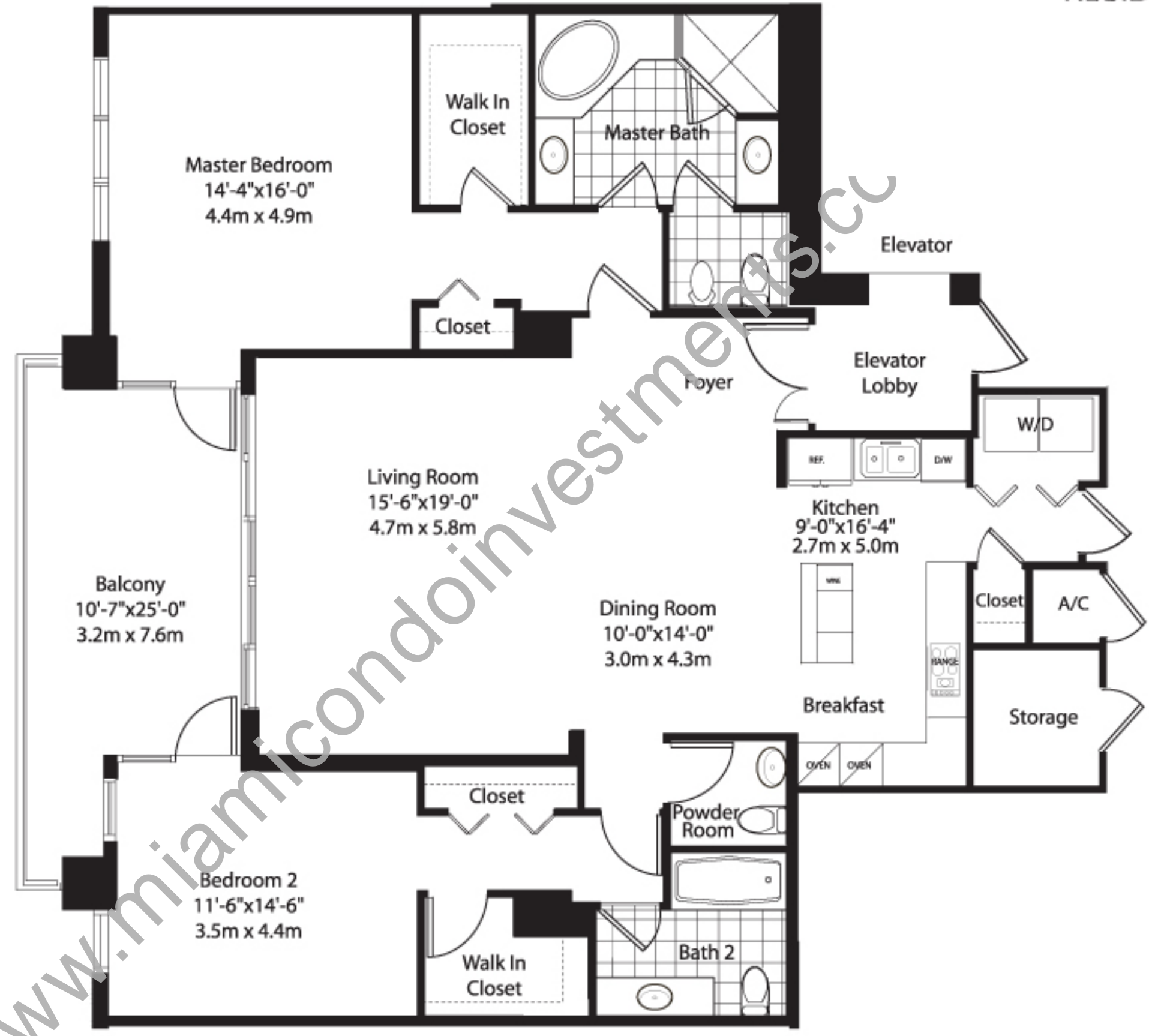
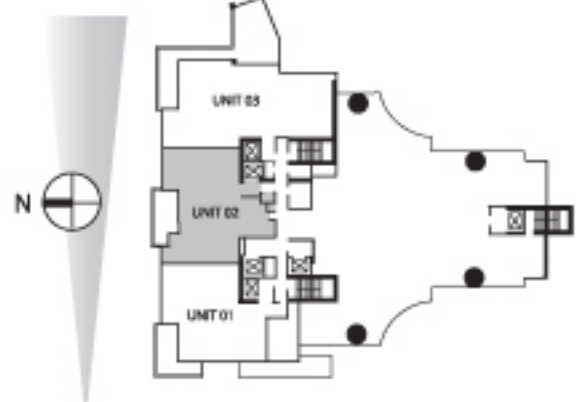


| | | |
|------------------------|-----------------|---------------|
| ENCLOSED AREA | 1,662 SF | 153 SM |
| BALCONY/TERRACE | 361 SF | 33 SM |
| TOTAL RESIDENCE | 2,023 SF | 186 SM |

Not to scale. All dimensions are approximate and all floorplans and development plans are subject to change in accordance with the agreement for sale. Oral representations cannot be relied upon as correctly stating the representations of the developer. For correct representations, make reference to the documents required by section 718.503 Florida Statutes to be furnished by developer to buyer or lessee. Stated dimensions are measured to the exterior boundaries of exterior walls, corridor walls and to the centerline of interior demising walls and may vary from the description and definition of the "Unit" set forth in the Declaration.



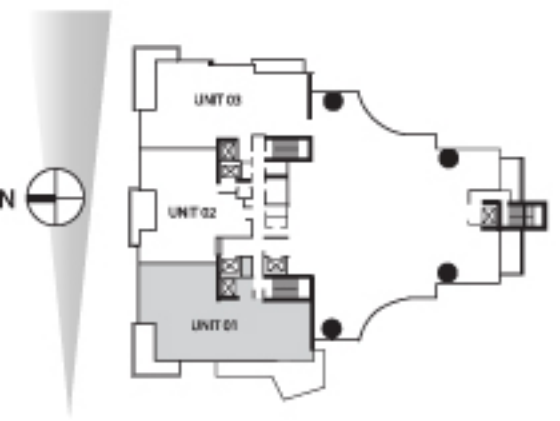
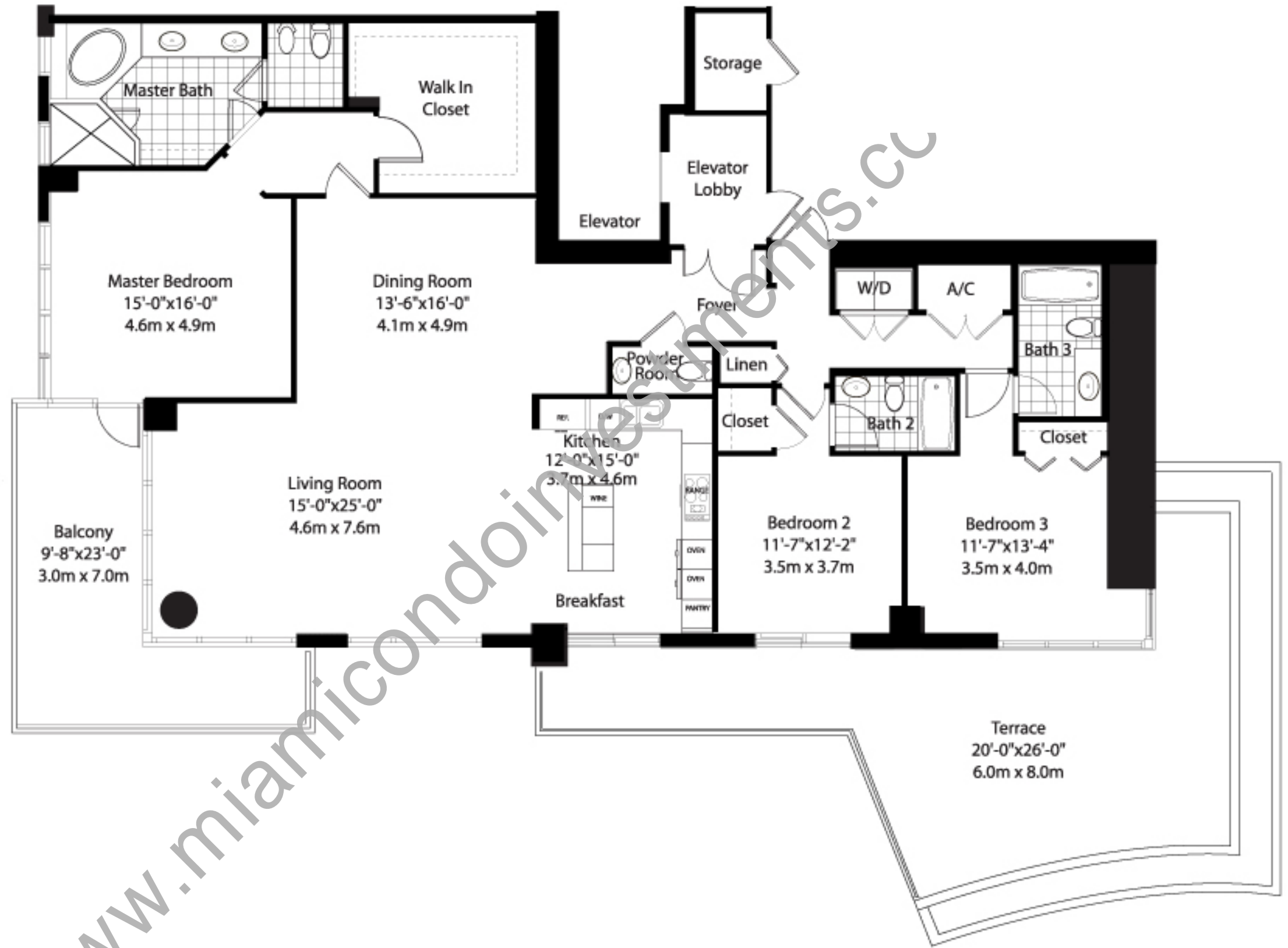
| | | |
|------------------------|-----------------|---------------|
| ENCLOSED AREA | 1,781 SF | 164 SM |
| BALCONY/TERRACE | 208 SF | 19 SM |
| TOTAL RESIDENCE | 1,989 SF | 183 SM |

Not to scale. All dimensions are approximate and all floorplans and development plans are subject to change in accordance with the agreement for sale. Oral representations cannot be relied upon as correctly stating the representations of the developer. For correct representations, make reference to the documents required by section 718.503 Florida Statutes to be furnished by developer to buyer or lessee. Stated dimensions are measured to the exterior boundaries of exterior walls, corridor walls and to the centerline of interior demising walls and may vary from the description and definition of the "Unit" set forth in the Declaration.



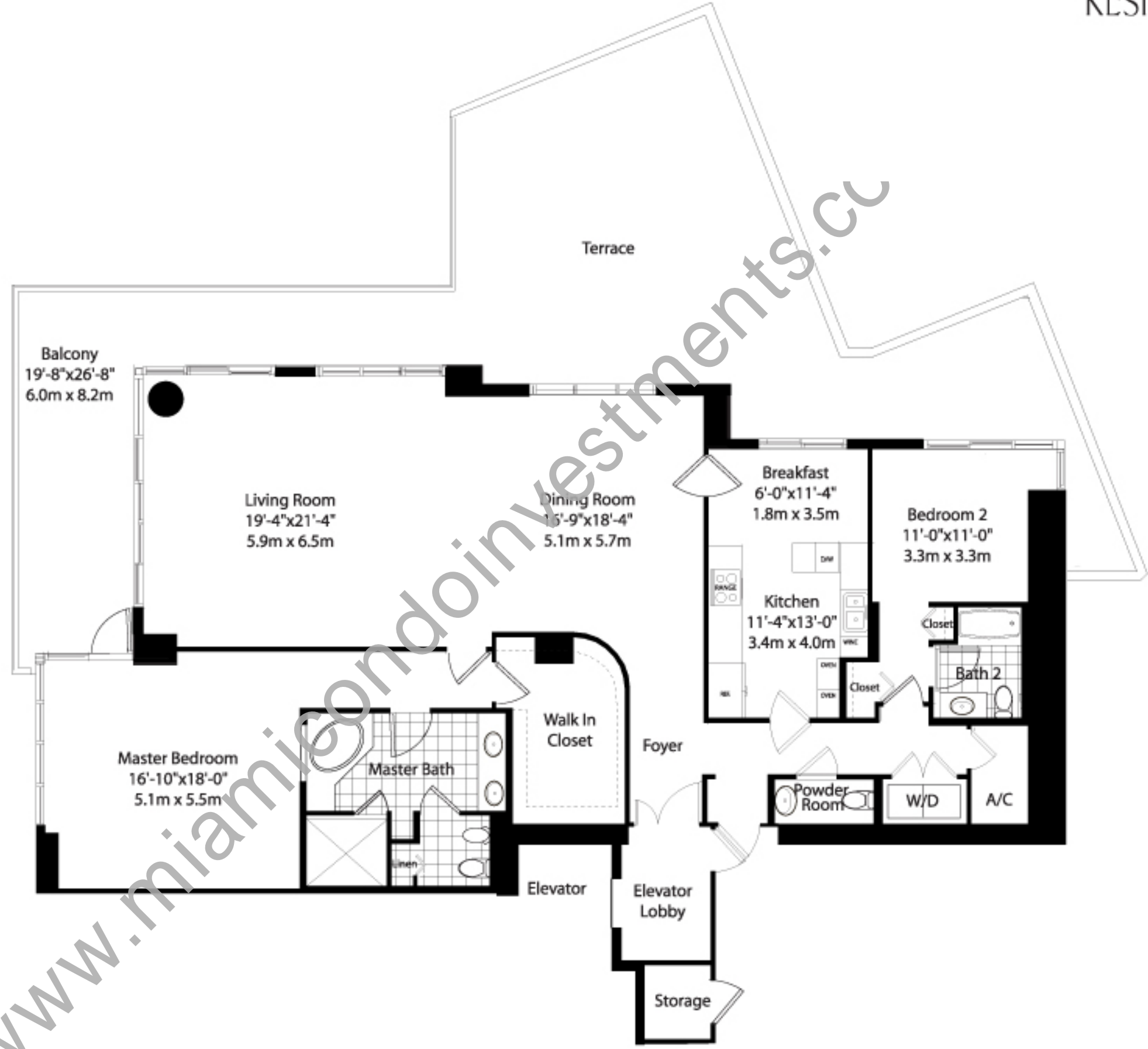
| | | |
|------------------------|-----------------|---------------|
| ENCLOSED AREA | 2,304 SF | 212 SM |
| BALCONY/TERRACE | 775 SF | 71 SM |
| TOTAL RESIDENCE | 3,079 SF | 283 SM |

Not to scale. All dimensions are approximate and all floorplans and development plans are subject to change in accordance with the agreement for sale. Oral representations cannot be relied upon as correctly stating the representations of the developer. For correct representations, make reference to the documents required by section 718.503 Florida Statutes to be furnished by developer to buyer or lessee. Stated dimensions are measured to the exterior boundaries of exterior walls, corridor walls and to the centerline of interior demising walls and may vary from the description and definition of the "Unit" set forth in the Declaration.



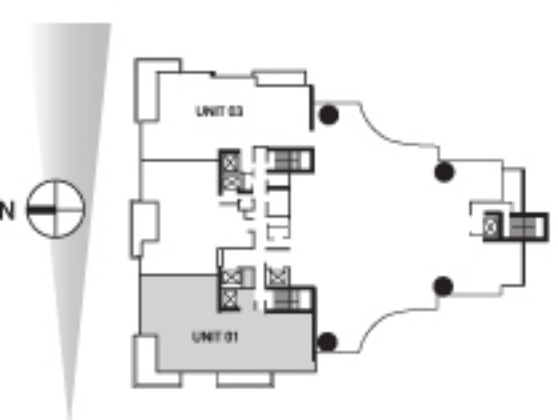
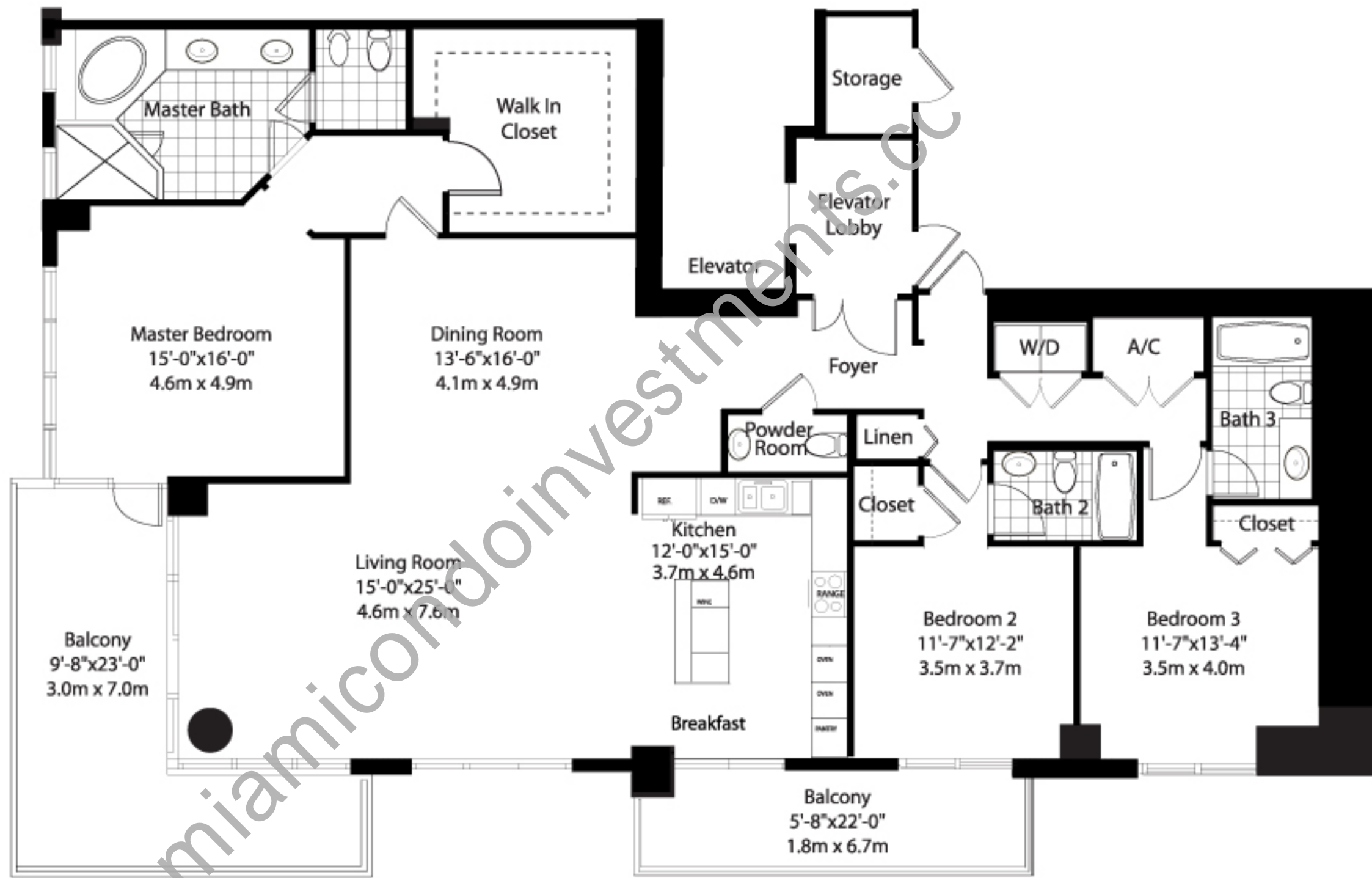
| | | |
|------------------------|-----------------|---------------|
| ENCLOSED AREA | 2,388 SF | 220 SM |
| BALCONY/TERRACE | 754 SF | 69 SM |
| TOTAL RESIDENCE | 3,142 SF | 289 SM |

Not to scale. All dimensions are approximate and all floorplans and development plans are subject to change in accordance with the agreement for sale. Oral representations cannot be relied upon as correctly stating the representations of the developer. For correct representations, make reference to the documents required by section 718.523 Florida Statutes to be furnished by developer to buyer or lessee. Stated dimensions are measured to the exterior boundaries of exterior walls, corridor walls and to the centerline of interior demising walls and may vary from the description and definition of the "Unit" set forth in the Declaration.



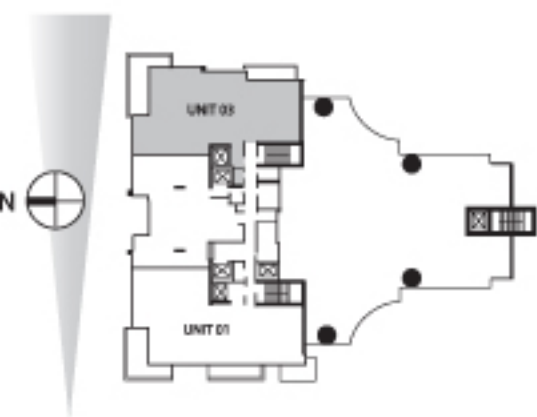
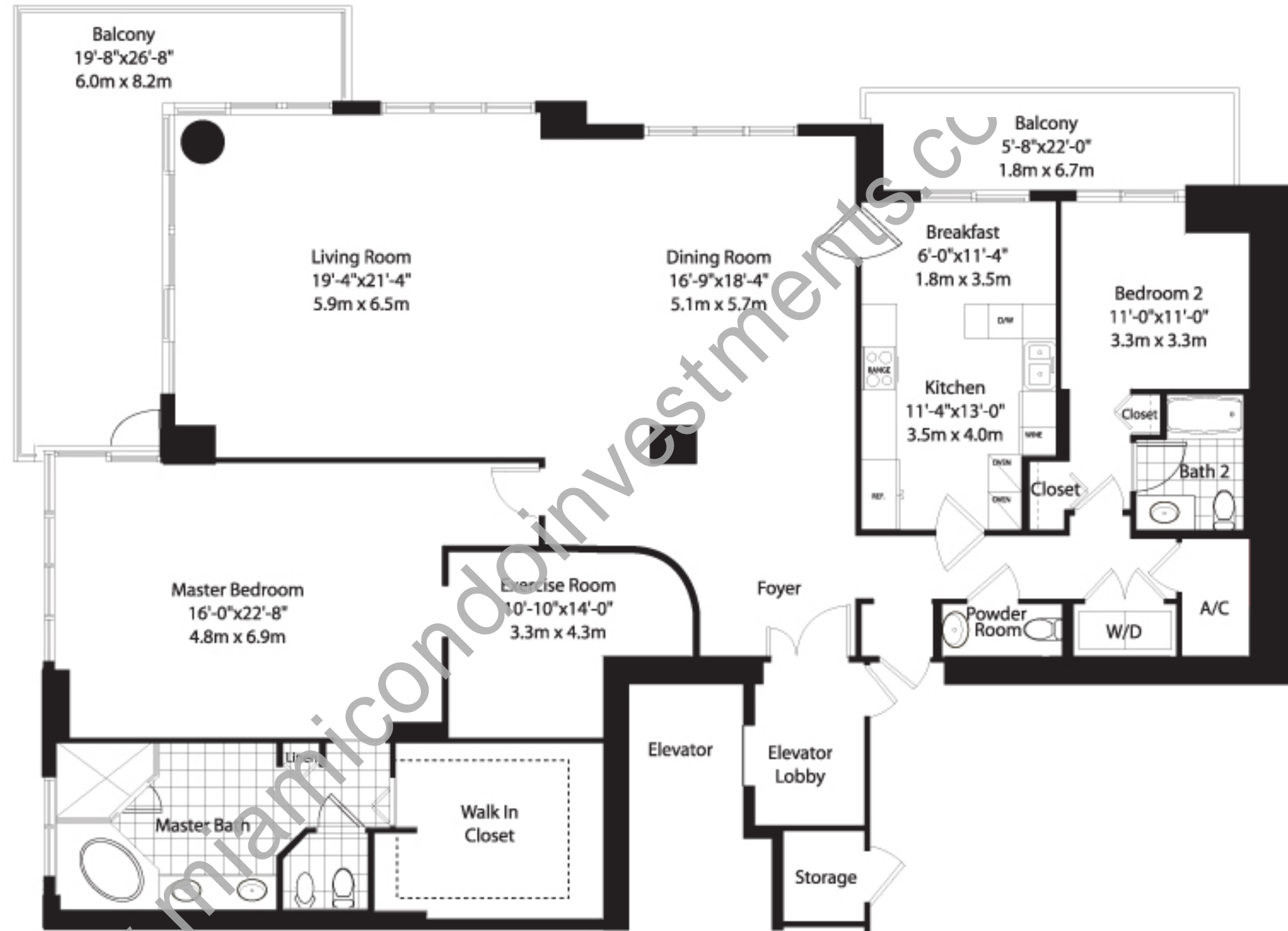
| | | |
|------------------------|-----------------|---------------|
| ENCLOSED AREA | 2,304 SF | 212 SM |
| BALCONY/TERRACE | 1,046 SF | 96 SM |
| TOTAL RESIDENCE | 3,350 SF | 308 SM |

Not to scale. All dimensions are approximate and all floorplans and development plans are subject to change in accordance with the agreement for sale. Oral representations cannot be relied upon as correctly stating the representations of the developer. For correct representations, make reference to the documents required by section 718.503 Florida Statutes to be furnished by developer to buyer or lessee. Stated dimensions are measured to the exterior boundaries of exterior walls, corridor walls and to the centerline of interior demising walls and may vary from the description and definition of the "Unit" set forth in the Declaration.



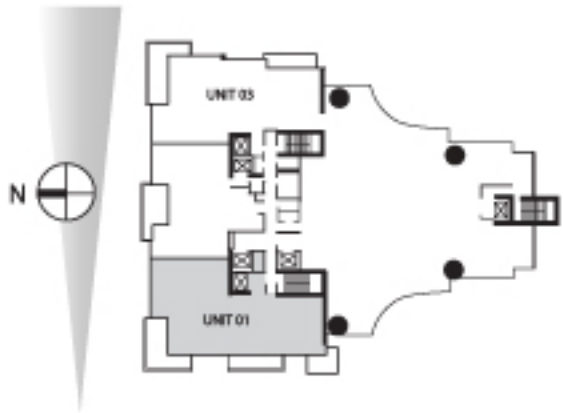
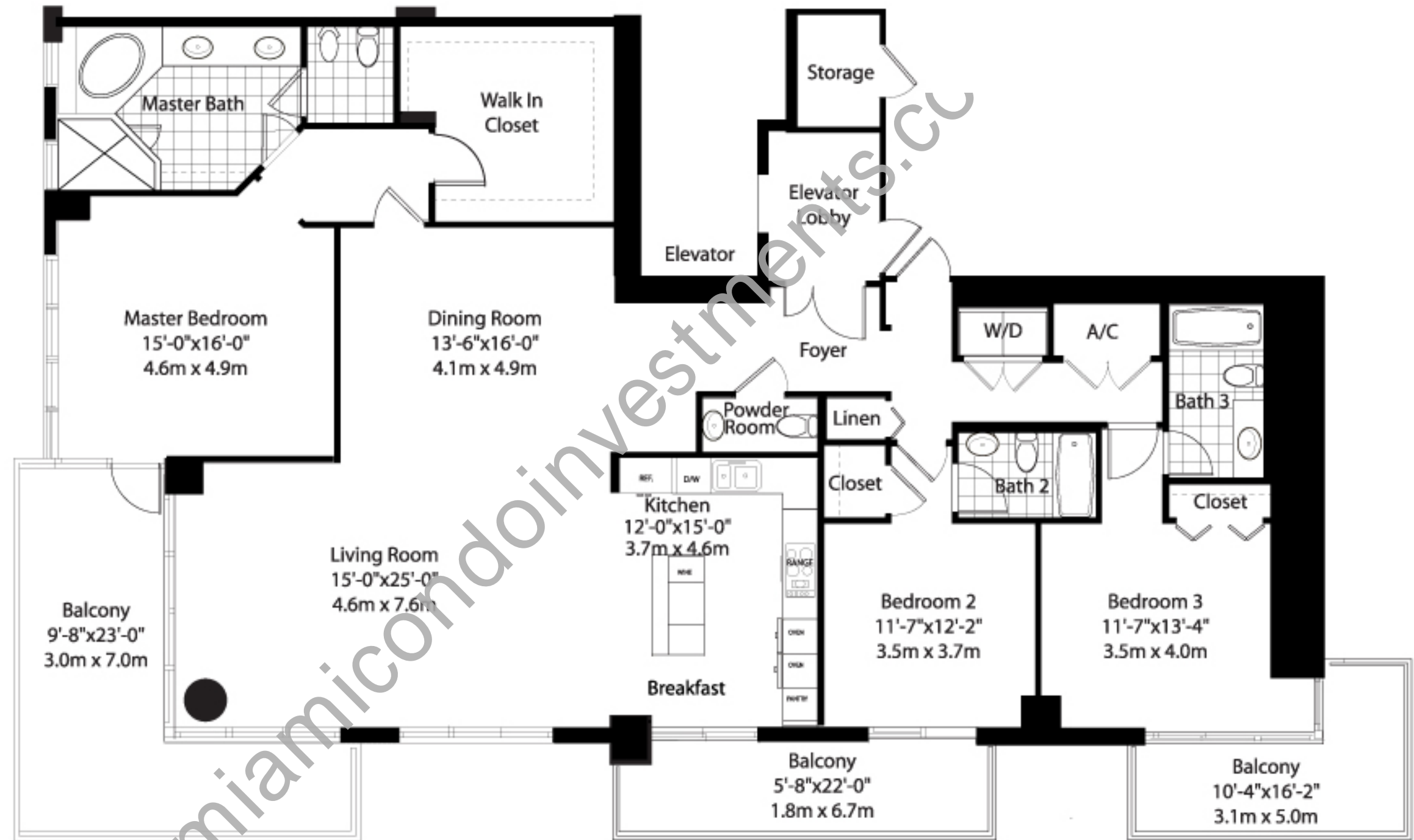
| | | |
|------------------------|-----------------|---------------|
| ENCLOSED AREA | 2,388 SF | 220 SM |
| BALCONY/TERRACE | 374 SF | 34 SM |
| TOTAL RESIDENCE | 2,762 SF | 254 SM |

Not to scale. All dimensions are approximate and all floorplans and development plans are subject to change in accordance with the agreement for sale. Oral representations cannot be relied upon as correctly stating the representations of the developer. For correct representations, make reference to the documents required by section 718.503 Florida Statutes to be furnished by developer to buyer or lessee. Stated dimensions are measured to the exterior boundaries of exterior walls, corridor walls and to the centerline of interior demising walls and may vary from the description and definition of the "Unit" set forth in the Declaration.



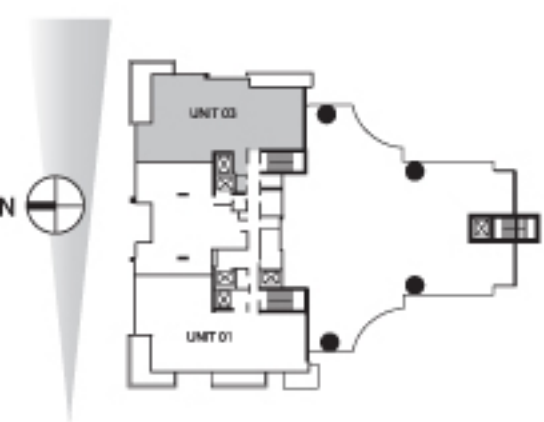
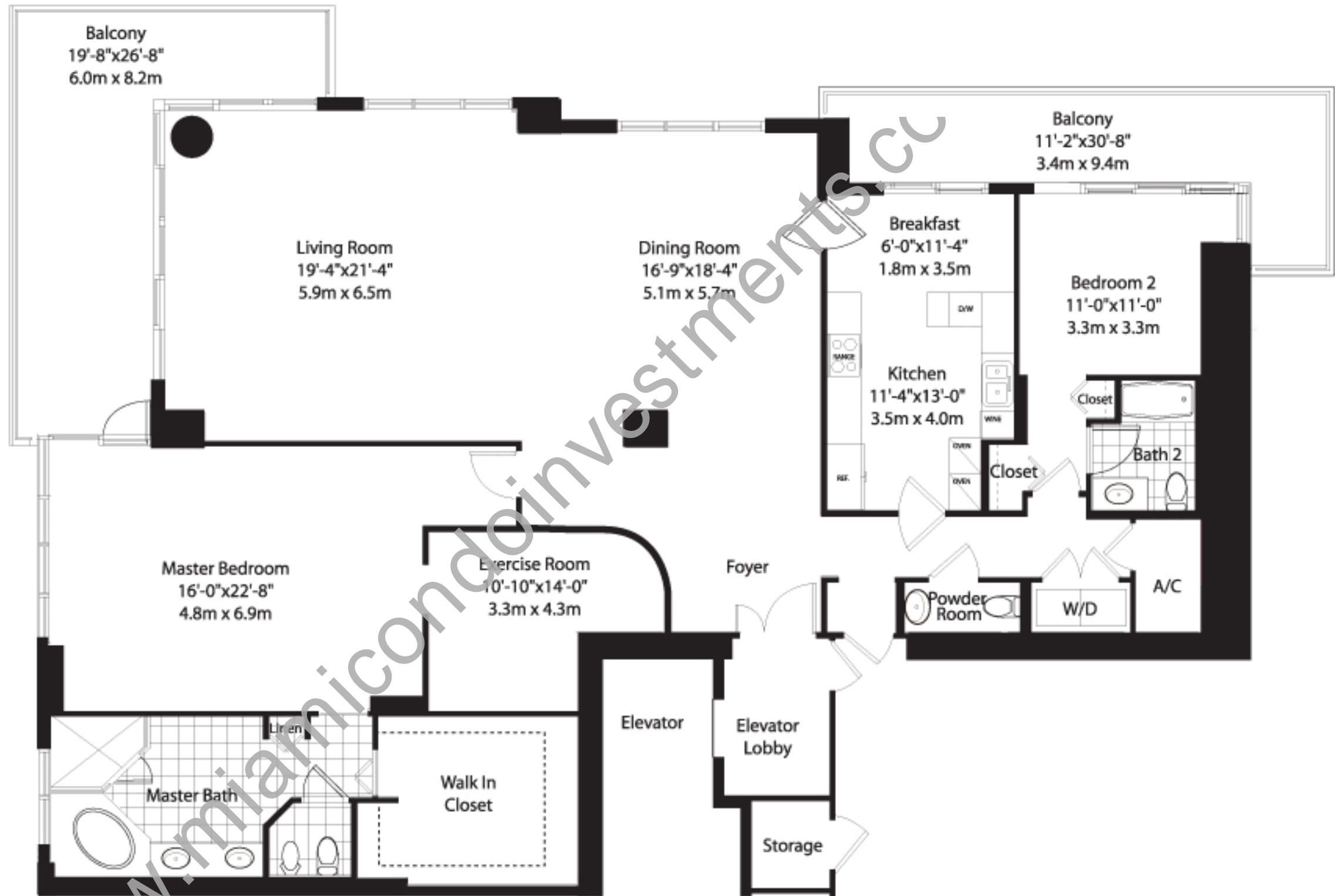
| | | |
|------------------------|-----------------|---------------|
| ENCLOSED AREA | 2,745 SF | 252 SM |
| BALCONY/TERRACE | 411 SF | 38 SM |
| TOTAL RESIDENCE | 3,156 SF | 290 SM |

Not to scale. All dimensions are approximate and all floorplans and development plans are subject to change in accordance with the agreement for sale. Oral representations cannot be relied upon as correctly stating the representations of the developer. For correct representations, make reference to the documents required by section 718.503 Florida Statutes to be furnished by developer to buyer or lessee. Stated dimensions are measured to the exterior boundaries of exterior walls, corridor walls and to the centerline of interior demising walls and may vary from the description and definition of the "Unit" set forth in the Declaration.



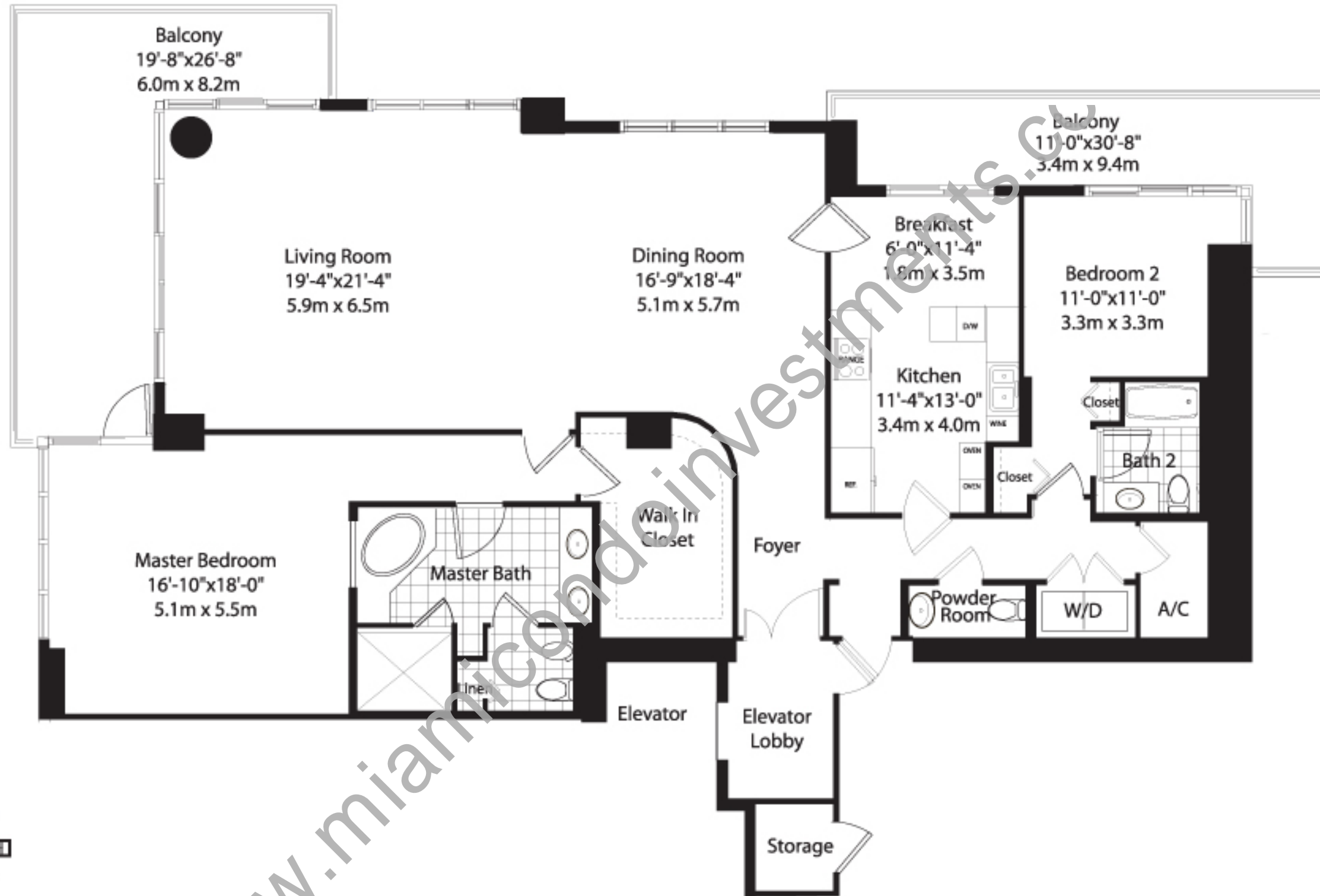
| | | |
|------------------------|-----------------|---------------|
| ENCLOSED AREA | 2,388 SF | 220 SM |
| BALCONY/TERRACE | 489 SF | 45 SM |
| TOTAL RESIDENCE | 2,877 SF | 265 SM |

Not to scale. All dimensions are approximate and all floorplans and development plans are subject to change in accordance with the agreement for sale. Oral representations cannot be relied upon as correctly stating the representations of the developer. For correct representations, make reference to the documents required by section 718.503 Florida Statutes to be furnished by developer to buyer or lessee. Stated dimensions are measured to the exterior boundaries of exterior walls, corridor walls and to the centerline of interior demising walls and may vary from the description and definition of the "Unit" set forth in the Declaration.

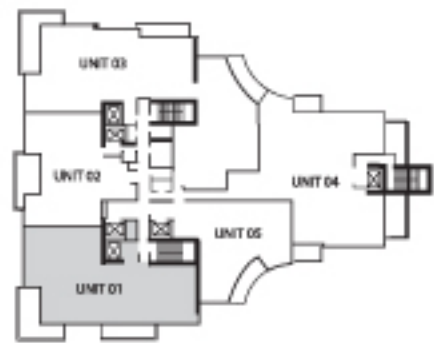
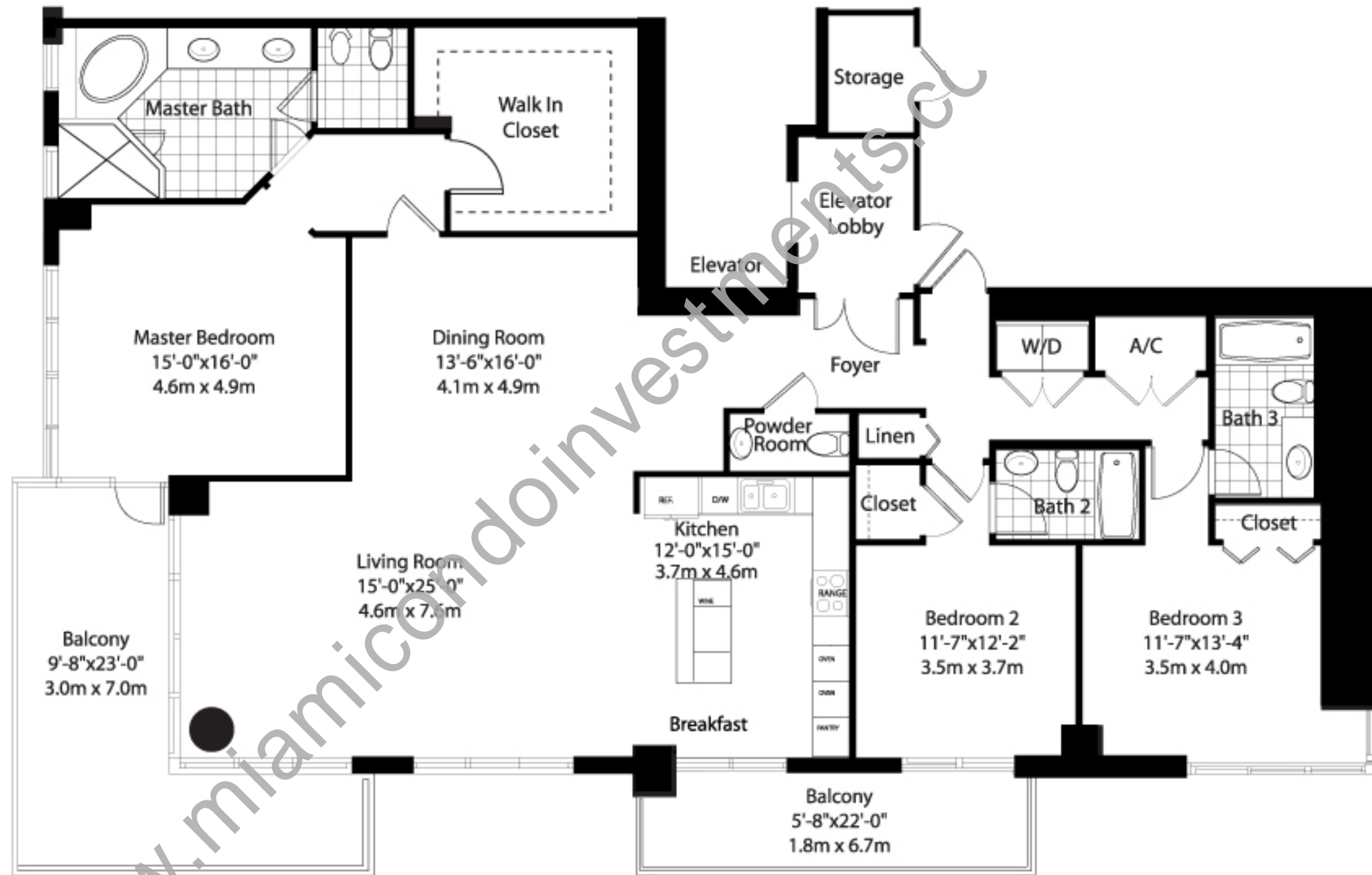


| | | |
|------------------------|-----------------|---------------|
| ENCLOSED AREA | 2,745 SF | 253 SM |
| BALCONY/TERRACE | 485 SF | 45 SM |
| TOTAL RESIDENCE | 3,230 SF | 298 SM |

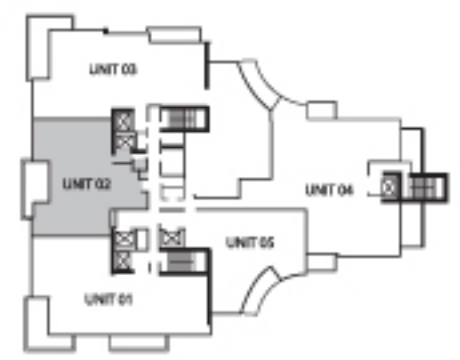
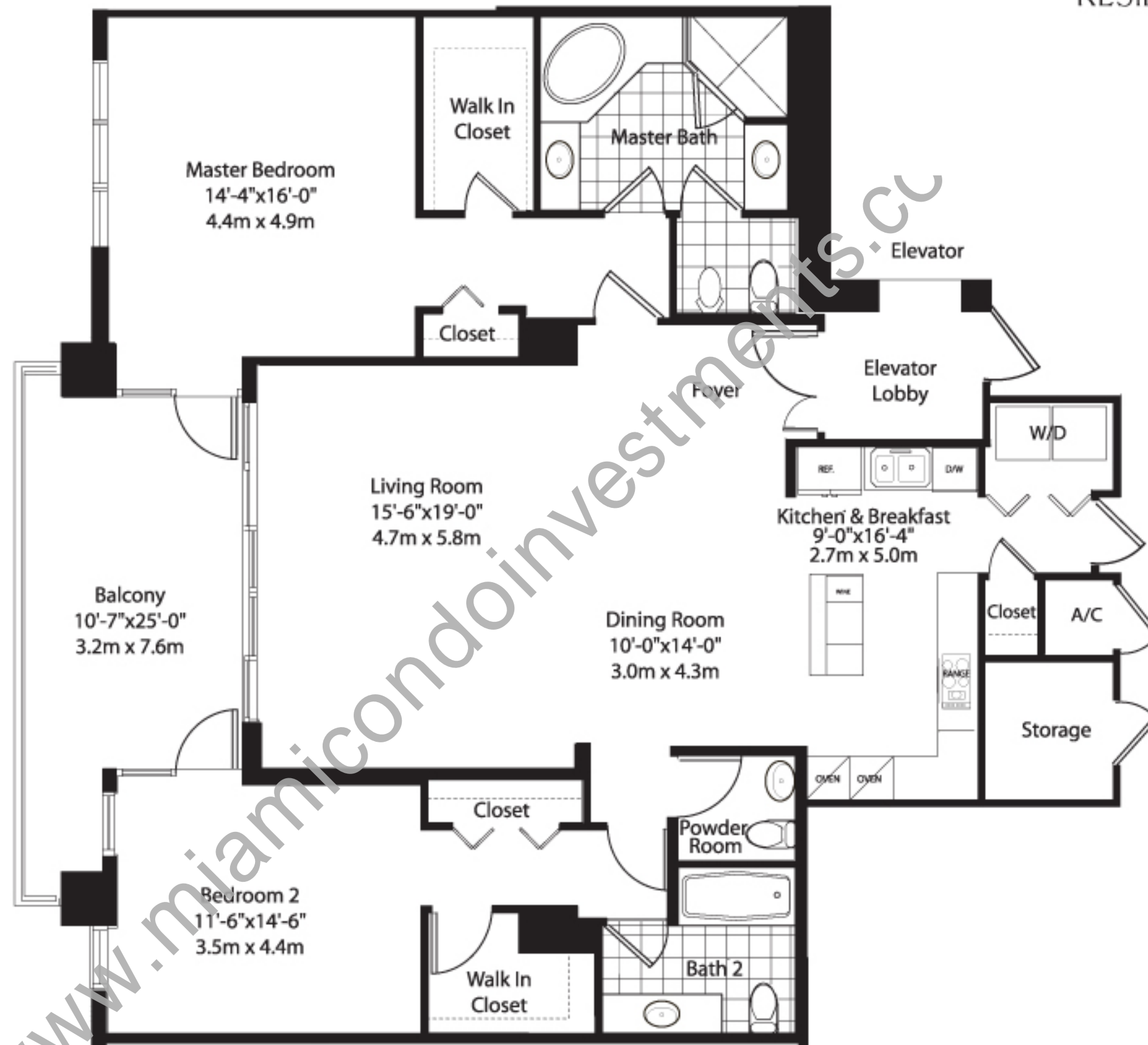
Not to scale. All dimensions are approximate and all floorplans and development plans are subject to change in accordance with the agreement for sale. Oral representations cannot be relied upon as correctly stating the representations of the developer. For correct representations, make reference to the documents required by section 718.503 Florida Statutes to be furnished by developer to buyer or lessee. Stated dimensions are measured to the exterior boundaries of exterior walls, corridor walls and to the centerline of interior demising walls and may vary from the description and definition of the "Unit" set forth in the Declaration.



| | | |
|------------------------|-----------------|---------------|
| ENCLOSED AREA | 2,304 SF | 212 SM |
| BALCONY/TERRACE | 485 SF | 45 SM |
| TOTAL RESIDENCE | 2,789 SF | 257 SM |

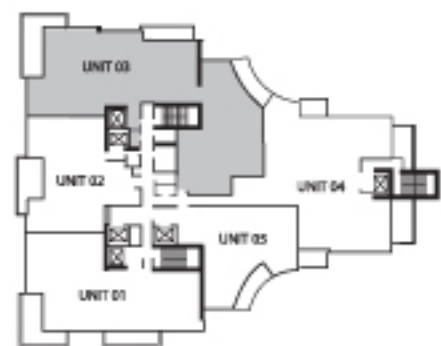
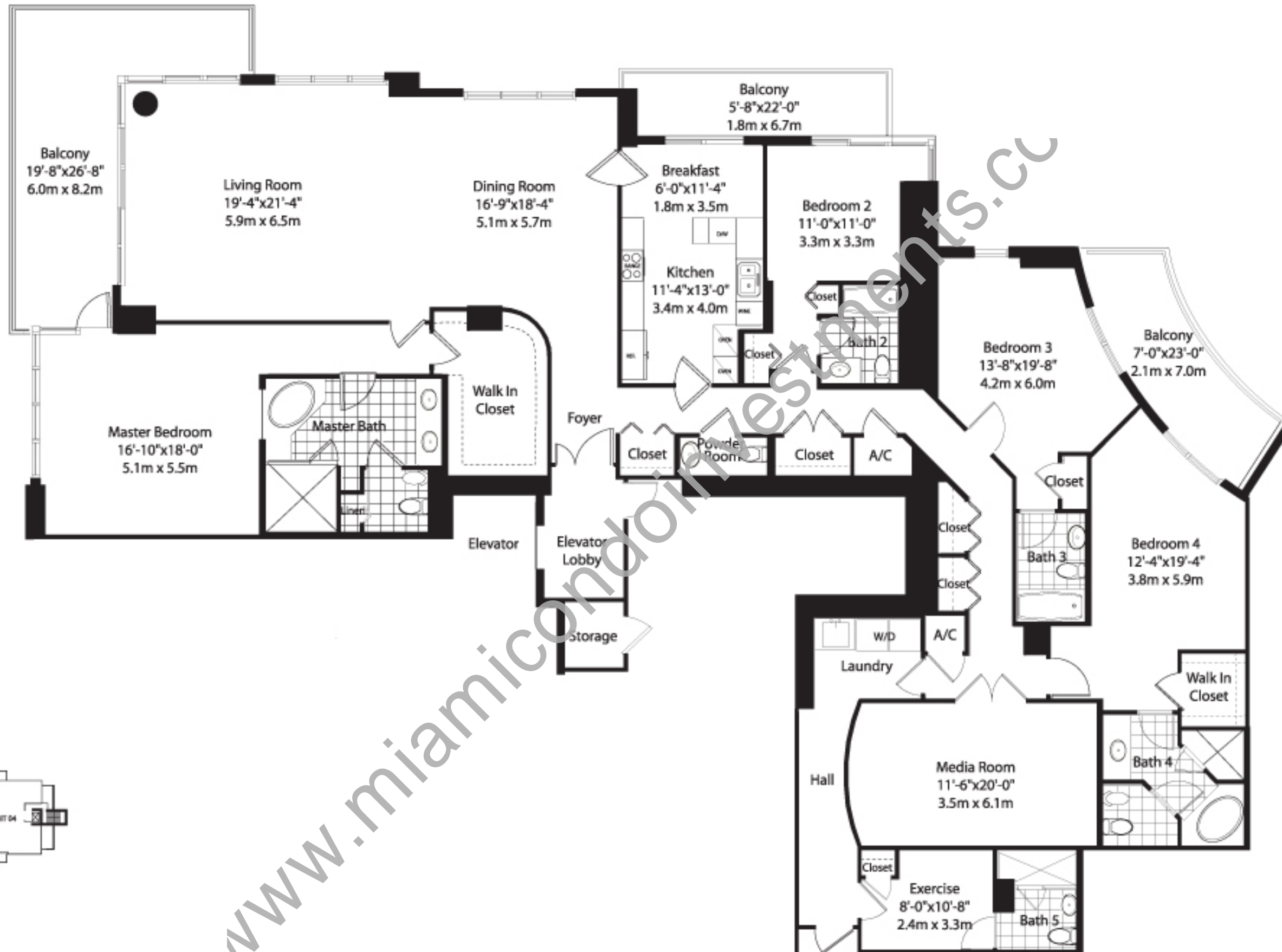


| | | |
|------------------------|-----------------|---------------|
| ENCLOSED AREA | 2,388 SF | 220 SM |
| BALCONY/TERRACE | 374 SF | 34 SM |
| TOTAL RESIDENCE | 2,762 SF | 254 SM |

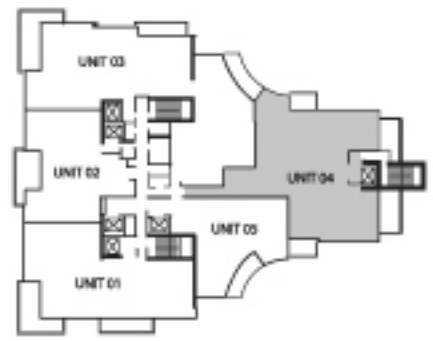
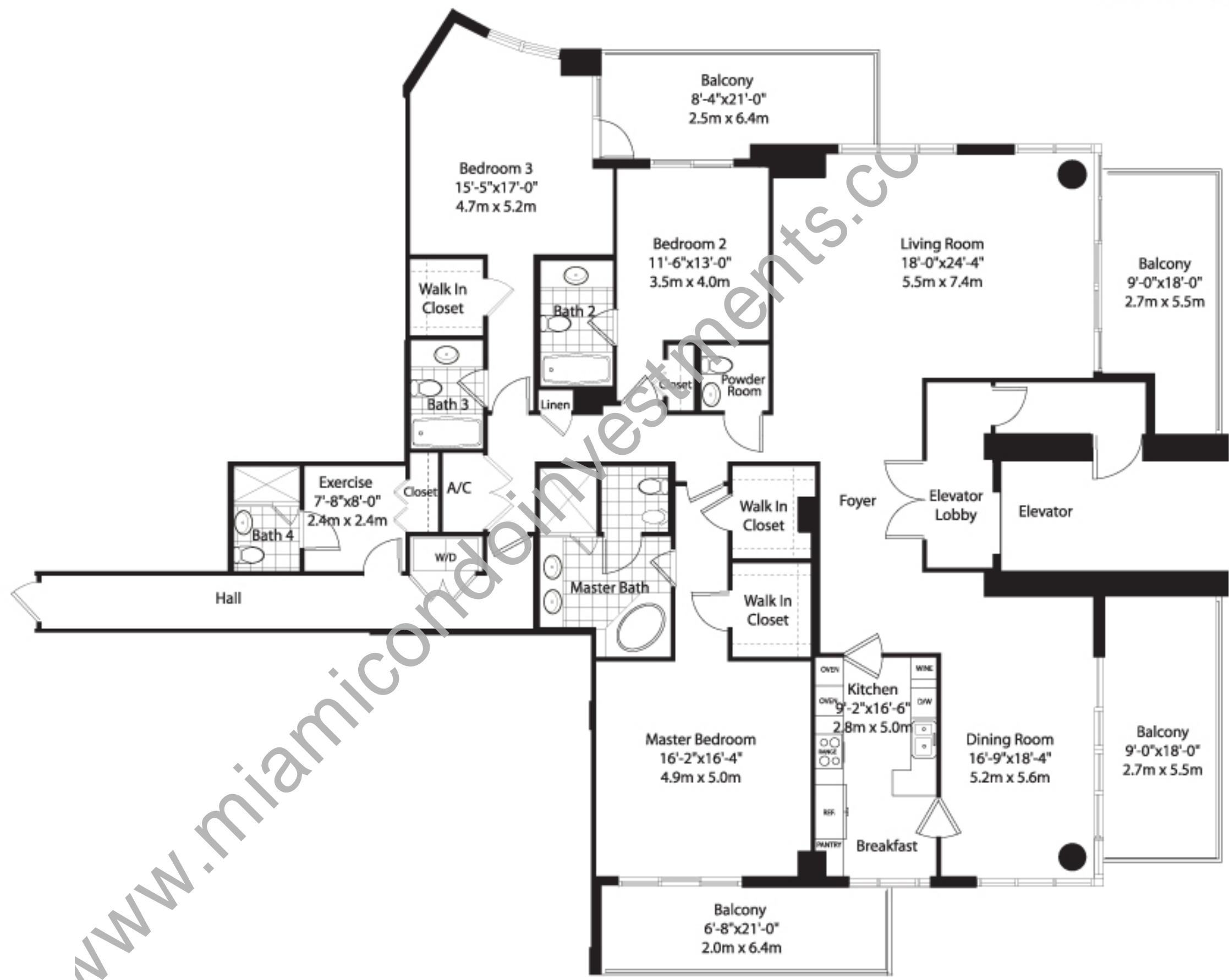


| | | |
|------------------------|-----------------|---------------|
| ENCLOSED AREA | 1,781 SF | 164 SM |
| BALCONY/TERRACE | 208 SF | 19 SM |
| TOTAL RESIDENCE | 1,989 SF | 183 SM |

Not to scale. All dimensions are approximate and all floorplans and development plans are subject to change in accordance with the agreement for sale. Oral representations cannot be relied upon as correctly stating the representations of the developer. For correct representations, make reference to the documents required by section 718.503 Florida Statutes to be furnished by developer to buyer or lessee. Stated dimensions are measured to the exterior boundaries of exterior walls, corridor walls and to the centerline of interior demising walls and may vary from the description and definition of the "Unit" set forth in the Declaration.



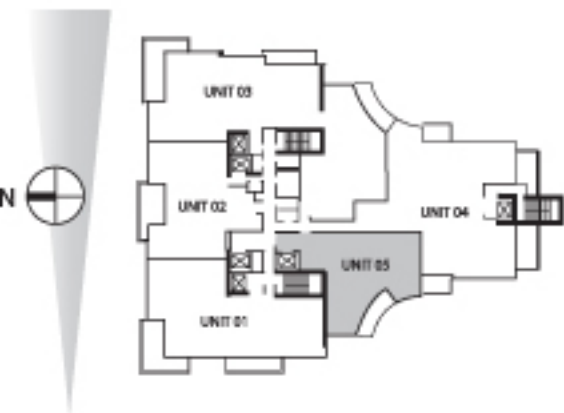
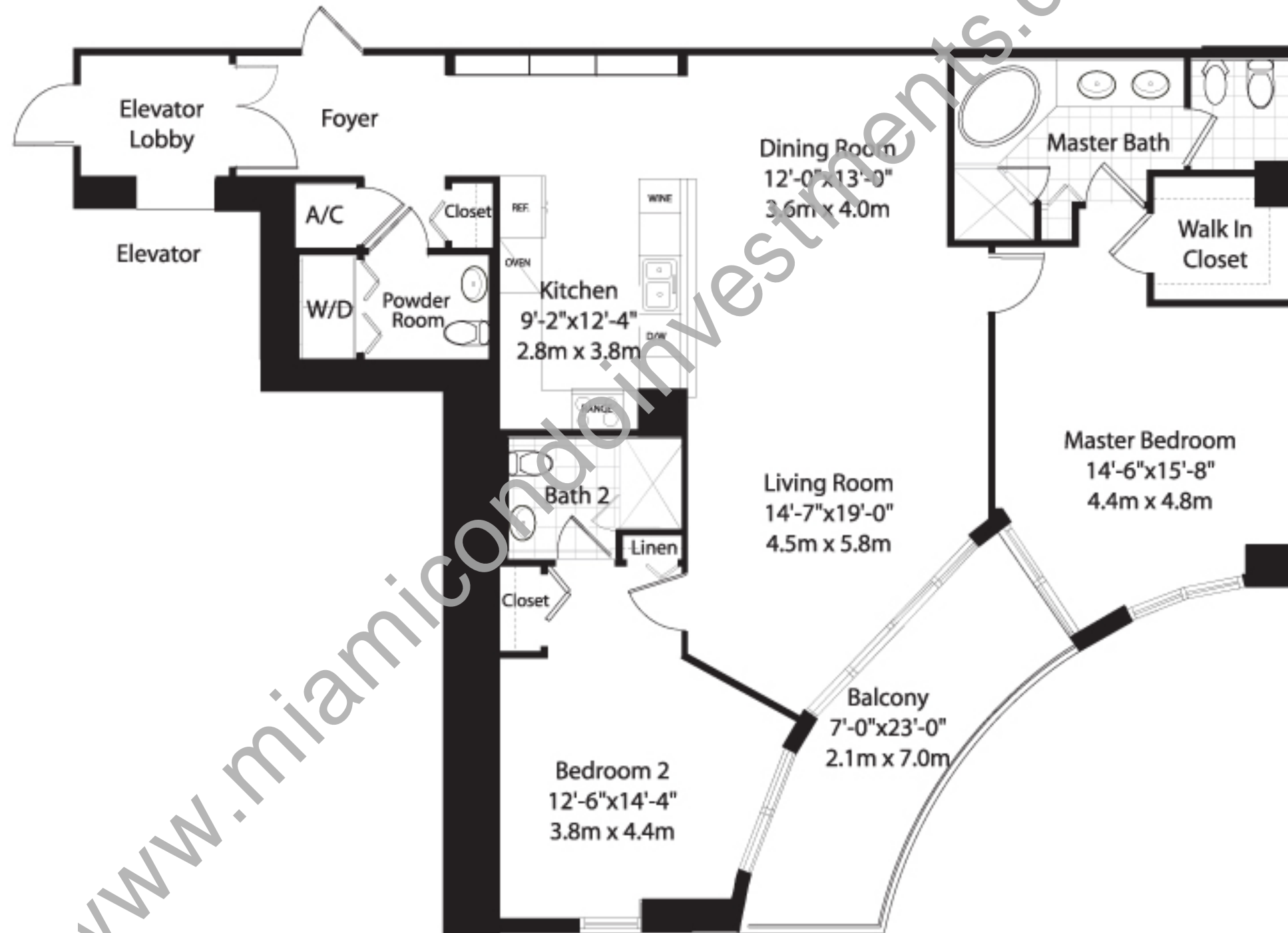
| | | |
|------------------------|-----------------|---------------|
| ENCLOSED AREA | 3,813 SF | 350 SM |
| BALCONY/TERRACE | 553 SF | 51 SM |
| TOTAL RESIDENCE | 4,366 SF | 401 SM |



| | | |
|------------------------|-----------------|---------------|
| ENCLOSED AREA | 2,959 SF | 272 SM |
| BALCONY/TERRACE | 631 SF | 58 SM |
| TOTAL RESIDENCE | 3,590 SF | 330 SM |

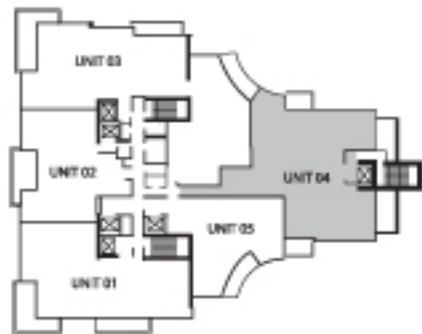
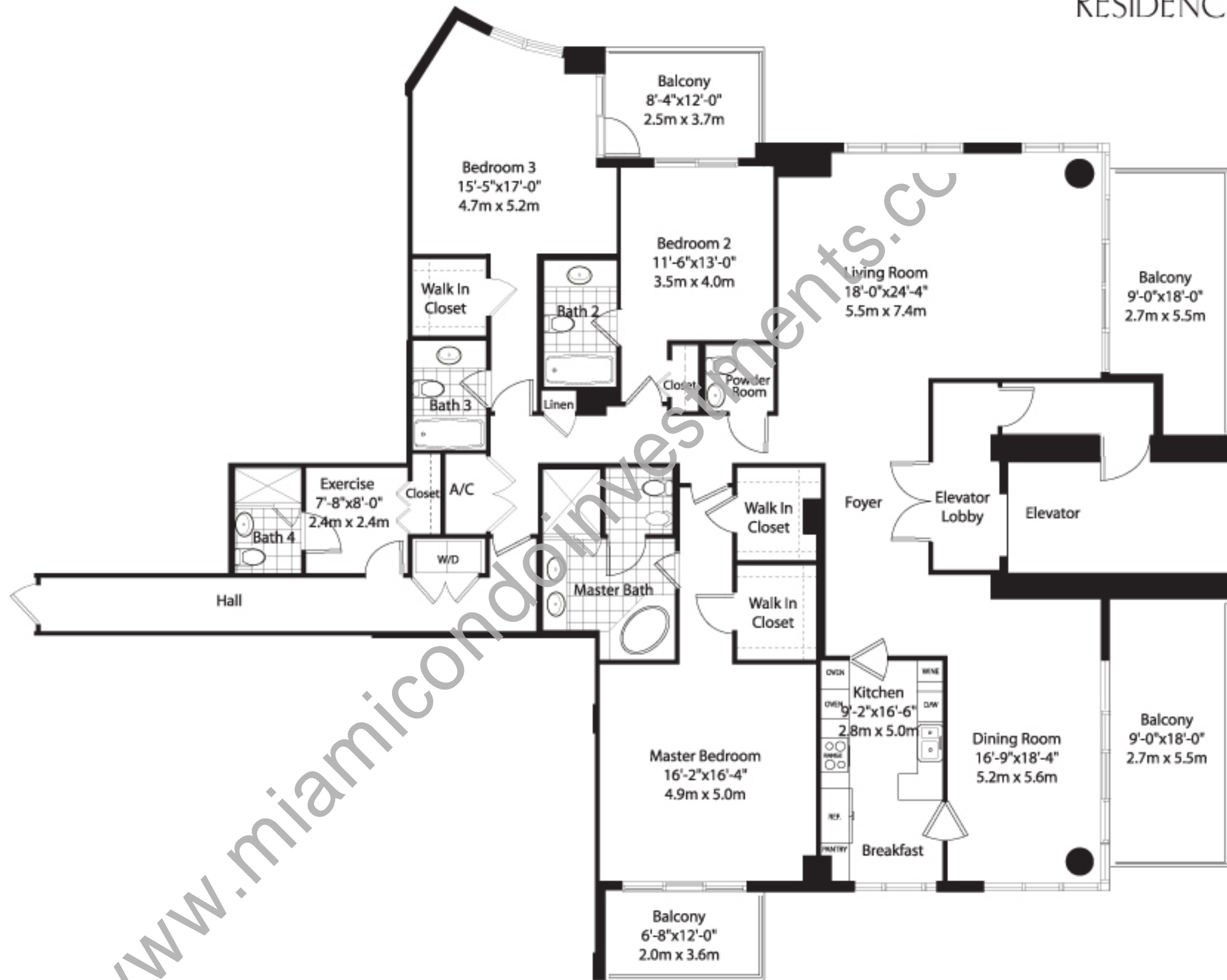
Not to scale. All dimensions are approximate and all floorplans and development plans are subject to change in accordance with the agreement for sale. Oral representations cannot be relied upon as correctly stating the representations of the developer. For correct representations, make reference to the documents required by section 718.503 Florida Statutes to be furnished by developer to buyer or lessee. Stated dimensions are measured to the exterior boundaries of exterior walls, corridor walls and to the centerline of interior demising walls and may vary from the description and definition of the "Unit" set forth in the Declaration.

Storage

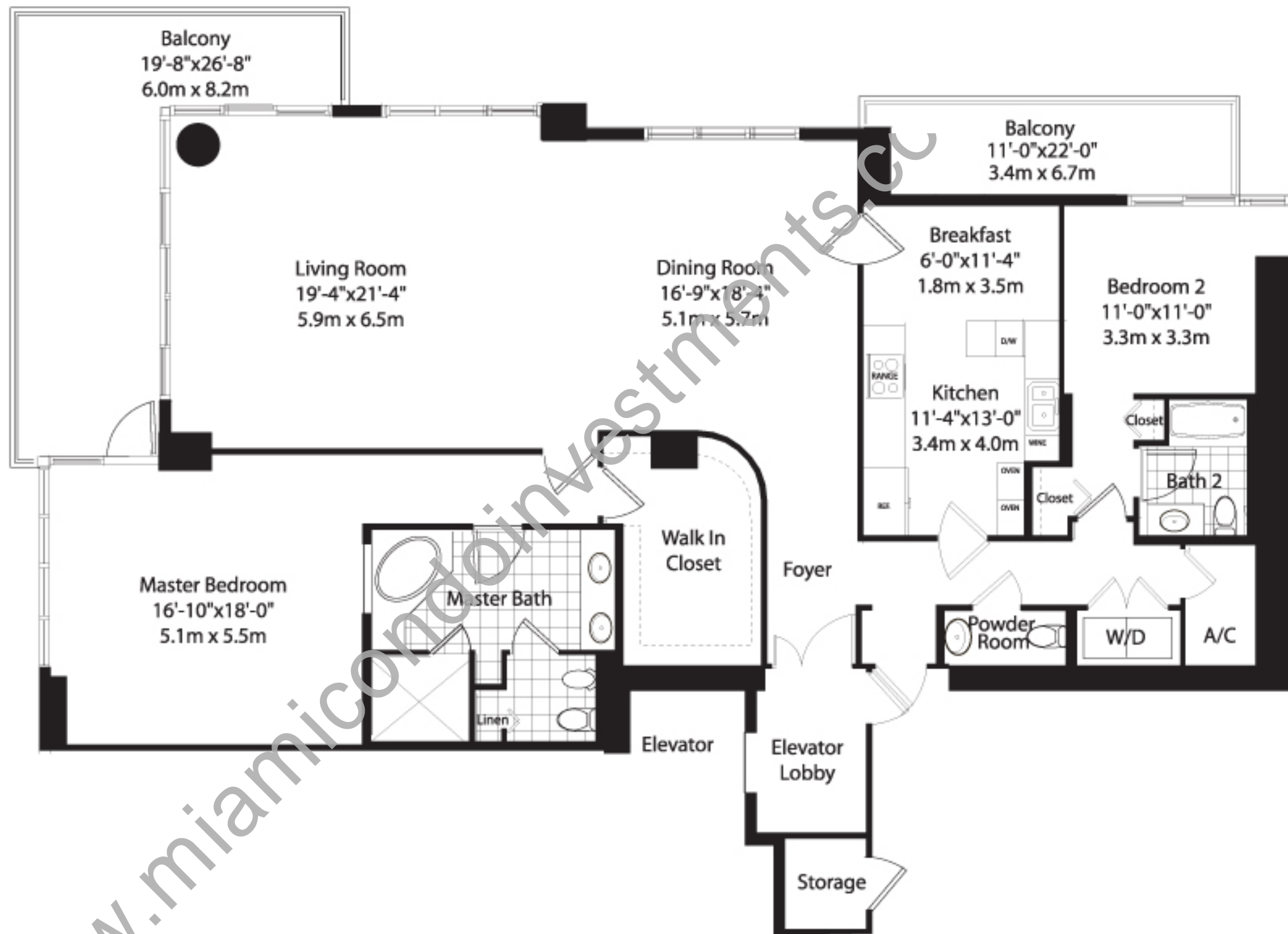


| | | |
|------------------------|-----------------|---------------|
| ENCLOSED AREA | 1,600 SF | 147 SM |
| BALCONY/TERRACE | 138 SF | 13 SM |
| TOTAL RESIDENCE | 1,738 SF | 161 SM |

Not to scale. All dimensions are approximate and all floorplans and development plans are subject to change in accordance with the agreement for sale. Oral representations cannot be relied upon as correctly stating the representations of the developer. For correct representations, make reference to the documents required by section 718.503 Florida Statutes to be furnished by developer to buyer or lessee. Stated dimensions are measured to the exterior boundaries of exterior walls, corridor walls and to the centerline of interior demising walls and may vary from the description and definition of the "Unit" set forth in the Declaration.



| | | |
|------------------------|-----------------|---------------|
| ENCLOSED AREA | 2,959 SF | 272 SM |
| BALCONY/TERRACE | 493 SF | 45 SM |
| TOTAL RESIDENCE | 3,452 SF | 317 SM |



| | | |
|------------------------|-----------------|---------------|
| ENCLOSED AREA | 2,304 SF | 212 SM |
| BALCONY/TERRACE | 410 SF | 38 SM |
| TOTAL RESIDENCE | 2,714 SF | 250 SM |

Not to scale. All dimensions are approximate and all floorplans and development plans are subject to change in accordance with the agreement for sale. Oral representations cannot be relied upon as correctly stating the representations of the developer. For correct representations, make reference to the documents required by section 718.503 Florida Statutes to be furnished by developer to buyer or lessee. Stated dimensions are measured to the exterior boundaries of exterior walls, corridor walls and to the centerline of interior demising walls and may vary from the description and definition of the "Unit" set forth in the Declaration.