

350 NE 24TH STREET, MIAMI, FL 33137
305.456.7081 / WWW.CITY24CONDO.COM

UNIT A3

1 BEDROOM / 1 BATH

Unit Numbers:

402, 403, 404, 407, 408, 409, 508, 509, 510,
513, 514, 515, 609, 612, 613, 614, 709, 712,
713, 714, 809, 812, 813, 814, 906, 909

Unit Dimensions

| | | |
|---|------------|-------------|
| Interior | 679 sq.ft. | 63.08 sq.m. |
| Terrace: 402, 403, 404, 407, 408, 409, 709, 712, 713, 714, 809, 812, 813, 814 | 146 sa.ft. | 13.56 sq.m. |

Total Residence: 825 sq.ft. 76.64 sq.m.

Alternate Terrace Dimensions

| | | |
|--|------------|-------------|
| Terrace: 508, 509, 510, 513, 514, 515, 906, 909 | 170 sq.ft. | 15.79 sq.m. |
|--|------------|-------------|

Balcony: 609, 612, 613, 614 93 sq.ft. 8.64 sq.m.

All dimensions are approximate and all floor plans are subject to change. Floor plans shown are not to any particular scale.

We are pledged to the letter and spirit of US policy for the achievement of equal opportunity throughout the nation. We encourage and support an affirmative advertising and marketing program in which there are no barriers to obtaining housing because of race, color, religion, sex, national origin, handicap or familial status. Oral representations cannot be relied upon to correctly state the representations of the developer. For correct representations, make reference to the documents required by section 718.503 Florida Statutes, to be furnished by a developer to a buyer or lessee. This is not an offer to sell, or solicitation of offers to buy the condominium units in states where such offer of solicitation cannot be made.



350 NE 24TH STREET, MIAMI, FL 33137
 305.456.7081 / WWW.CITY24CONDO.COM

UNIT B2 2 BEDROOM / 2 BATH

Unit Numbers:
 405, 406, 511, 512, 610, 611, 710, 711, 810, 811, 907,
 908, 1007, 1008, 1107, 1108, 1204, 1205, 1404, 1405

Unit Dimensions

| | | |
|---|------------|-------------|
| Interior: | 948 sq.ft. | 88.07 sq.m. |
| Terrace: 405, 406, 710, 711, 810, 811, 1007, 1008, 1107, 1108, 1404, 1405 | 225 sa.ft. | 20.90 sq.m. |

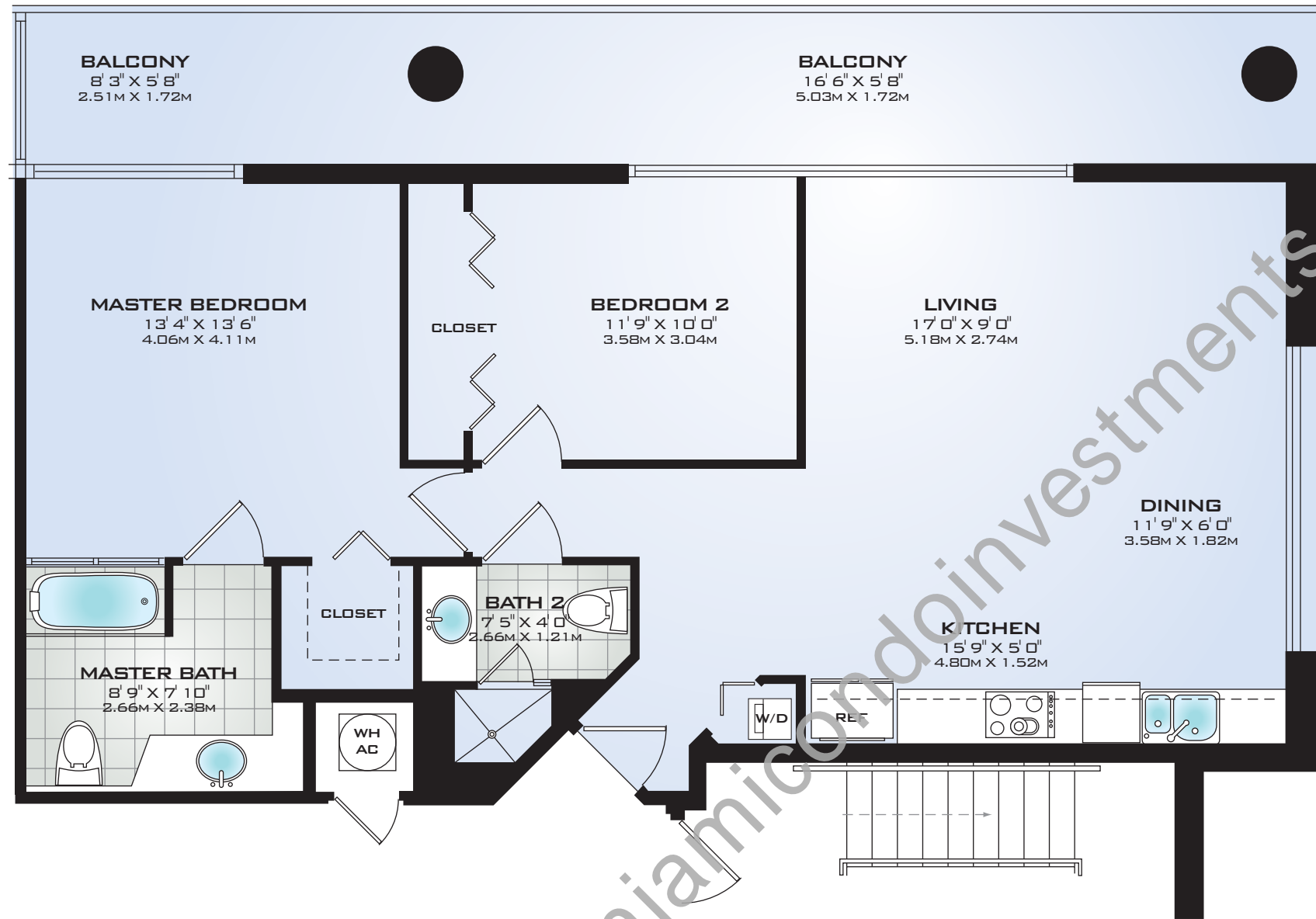
Total Residence: 1,173 sq.ft. 108.97 sq.m.

Alternate Terrace Dimensions

| | | |
|--|------------|-------------|
| Terrace: 511, 512, 907, 908, 1204, 1205 | 260 sq.ft. | 2415 sq.m. |
| Balcony: 610, 611 | 172 sq.ft. | 15.98 sq.m. |

All dimensions are approximate and all floor plans are subject to change. Floor plans shown are not to any particular scale.

We are pledged to the letter and spirit of US policy for the achievement of equal opportunity throughout the nation. We encourage and support an affirmative advertising and marketing program in which there are no barriers to obtaining housing because of race, color, religion, sex, national origin, handicap or familial status. Oral representations cannot be relied upon to correctly state the representations of the developer. For correct representations, make reference to the documents required by section 718.503 Florida Statutes, to be furnished by a developer to a buyer or lessee. This is not an offer to sell, or solicitation of offers to buy the condominium units in states where such offer of solicitation cannot be made.



CITY 24
LIVING THE LIFE 24/7

350 NE 24TH STREET, MIAMI, FL 33137
305.456.7081 / WWW.CITY24CONDO.COM

UNIT B3
2 BEDROOM / 2 BATH

Unit Numbers:
501, 506, 601, 606, 607, 701, 706, 707, 801, 806
807, 1001, 1004, 1005, 1010, 1101, 1104, 1105, 1110

Unit Dimensions

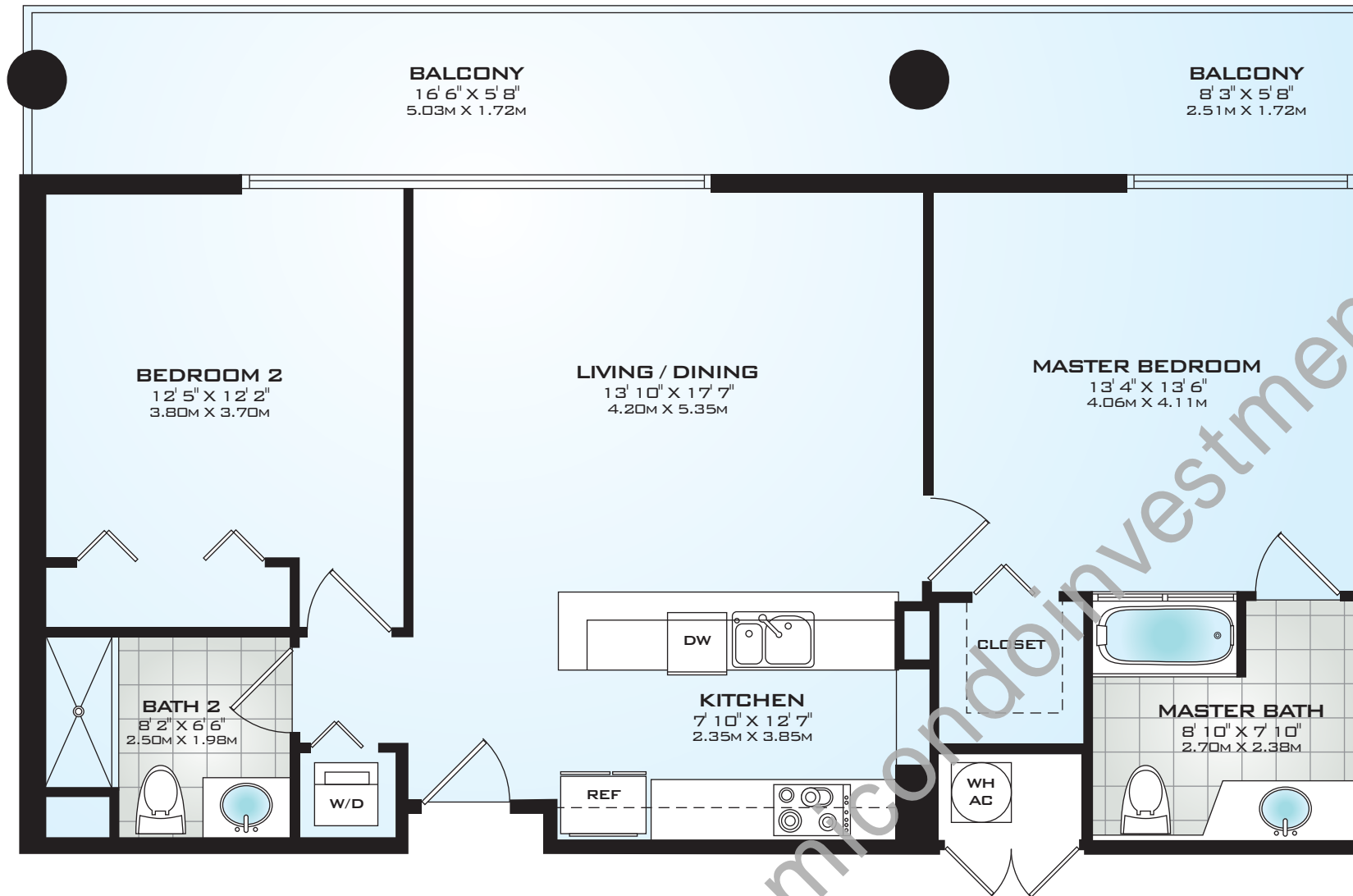
| | | |
|---|---------------------|---------------------|
| Interior: | 1,033 sq.ft. | 92.97 sq.m. |
| Terrace: 701, 706, 707, 801, 806, 807, 1001, 1004, 1005, 1010, 1101, 1104, 1105, 1110 | 219 sq.ft. | 20.34 sq.m. |
| Total Residence: | 1,252 sq.ft. | 113.31 sq.m. |

Alternate Terrace Dimensions

| | | |
|------------------------|------------|-------------|
| Terrace: 501 | 869 sq.ft. | 80.73 sq.m. |
| Terrace: 506 | 966 sq.ft. | 89.74 sq.m. |
| Balcony: 601, 606, 607 | 139 sq.ft. | 12.91 sq.m. |

All dimensions are approximate and all floor plans are subject to change. Floor plans shown are not to any particular scale.

We are pledged to the letter and spirit of US policy for the achievement of equal opportunity throughout the nation. We encourage and support an affirmative advertising and marketing program in which there are no barriers to obtaining housing because of race, color, religion, sex, national origin, handicap or familial status. Oral representations cannot be relied upon to correctly state the representations of the developer. For correct representations, make reference to the documents required by section 718.503 Florida Statutes, to be furnished by a developer to a buyer or lessee. This is not an offer to sell, or solicitation of offers to buy the condominium units in states where such offer of solicitation cannot be made.



370 NE 24TH STREET, MIAMI, FL 33137
305.456.7081 / WWW.CITY24CONDO.COM

UNIT B4 2 BEDROOM / 2 BATH

Unit Numbers:
502, 505, 602, 605, 608, 702, 705, 708,
802, 805, 808, 1006, 1009, 1106, 1109

Unit Dimensions

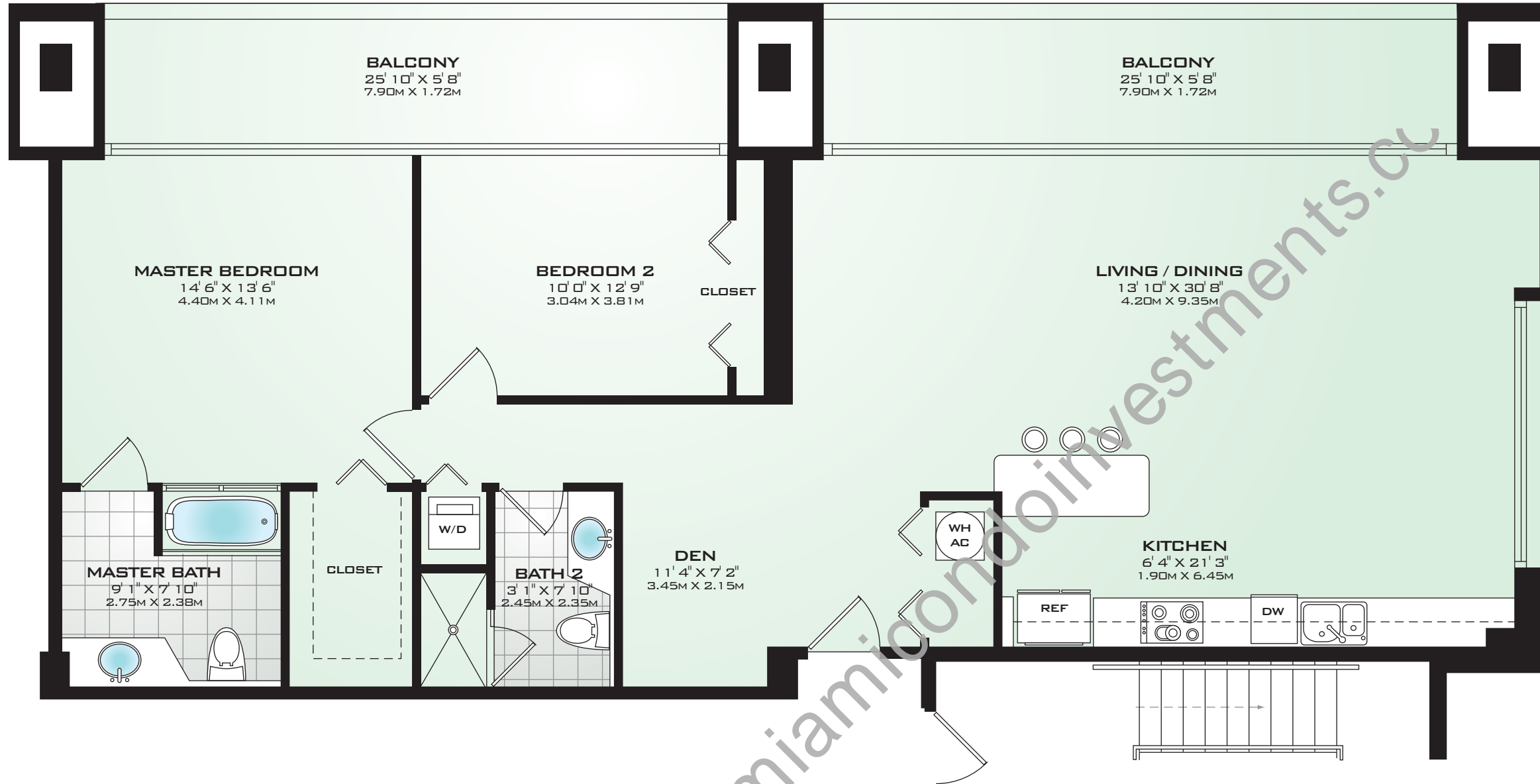
| | | |
|--|--------------|--------------|
| Interior: | 1,020 sq.ft. | 94.76 sq.m. |
| Terrace: 702, 705, 708, 802, 805, 806, 1006, 1009, 1106, 1109 | 219 sq.ft. | 20.34 sq.m. |
| Total Residence: | 1,239 sq.ft. | 115.10 sq.m. |

Alternate Terrace Dimensions

| | | |
|------------------------|------------|-------------|
| Terrace: 502, 505 | 652 sa.ft. | 60.57 sq.m. |
| Balcony: 602, 605, 608 | 139 sq.ft. | 12.91 sq.m. |

All dimensions are approximate and all floor plans are subject to change. Floor plans shown are not to any particular scale.

We are pledged to the letter and spirit of US policy for the achievement of equal opportunity throughout the nation. We encourage and support an affirmative advertising and marketing program in which there are no barriers to obtaining housing because of race, color, religion, sex, national origin, handicap or familial status. Oral representations cannot be relied upon to correctly state the representations of the developer. For correct representations, make reference to the documents required by section 718.503 Florida Statutes, to be furnished by a developer to a buyer or lessee. This is not an offer to sell, or solicitation of offers to buy the condominium units in states where such offer of solicitation cannot be made.



350 NE 24TH STREET, MIAMI, FL 33137
305.456.7081 / WWW.CITY24CONDO.COM

UNIT C1 2 BEDROOM / 2 BATH

Unit Numbers:
901, 904, 905, 910, 1203, 1206, 1403, 1406

Unit Dimensions

| | | |
|-------------------------|---------------------|---------------------|
| Interior: | 1,360 sq.ft. | 126.35 sq.m. |
| Balcony: 1403, 1406 | 292 sq.ft. | 27.13 sq.m. |
| Total Residence: | 1,652 sq.ft. | 153.47 sq.m. |

Alternate Terrace Dimensions

| | | |
|-----------------------------|------------|-------------|
| Terrace: 1203, 1206 | 974 sa.ft. | 90.48 sq.m. |
| Terrace: 901, 904, 905, 910 | 980 sq.ft. | 91.97 sq.m. |

All dimensions are approximate and all floor plans are subject to change. Floor plans shown are not to any particular scale.

We are pledged to the letter and spirit of US policy for the achievement of equal opportunity throughout the nation. We encourage and support an affirmative advertising and marketing program in which there are no barriers to obtaining housing because of race, color, religion, sex, national origin, handicap or familial status. Oral representations cannot be relied upon to correctly state the representations of the developer. For correct representations, make reference to the documents required by section 718.503 Florida Statutes, to be furnished by a developer to a buyer or lessee. This is not an offer to sell, or solicitation of offers to buy the condominium units in states where such offer of solicitation cannot be made.