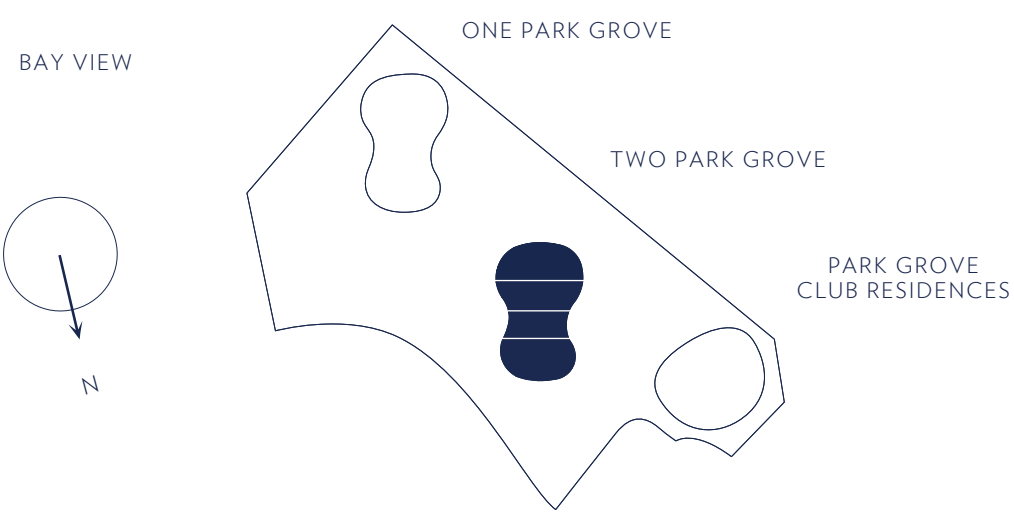


KEY PLAN



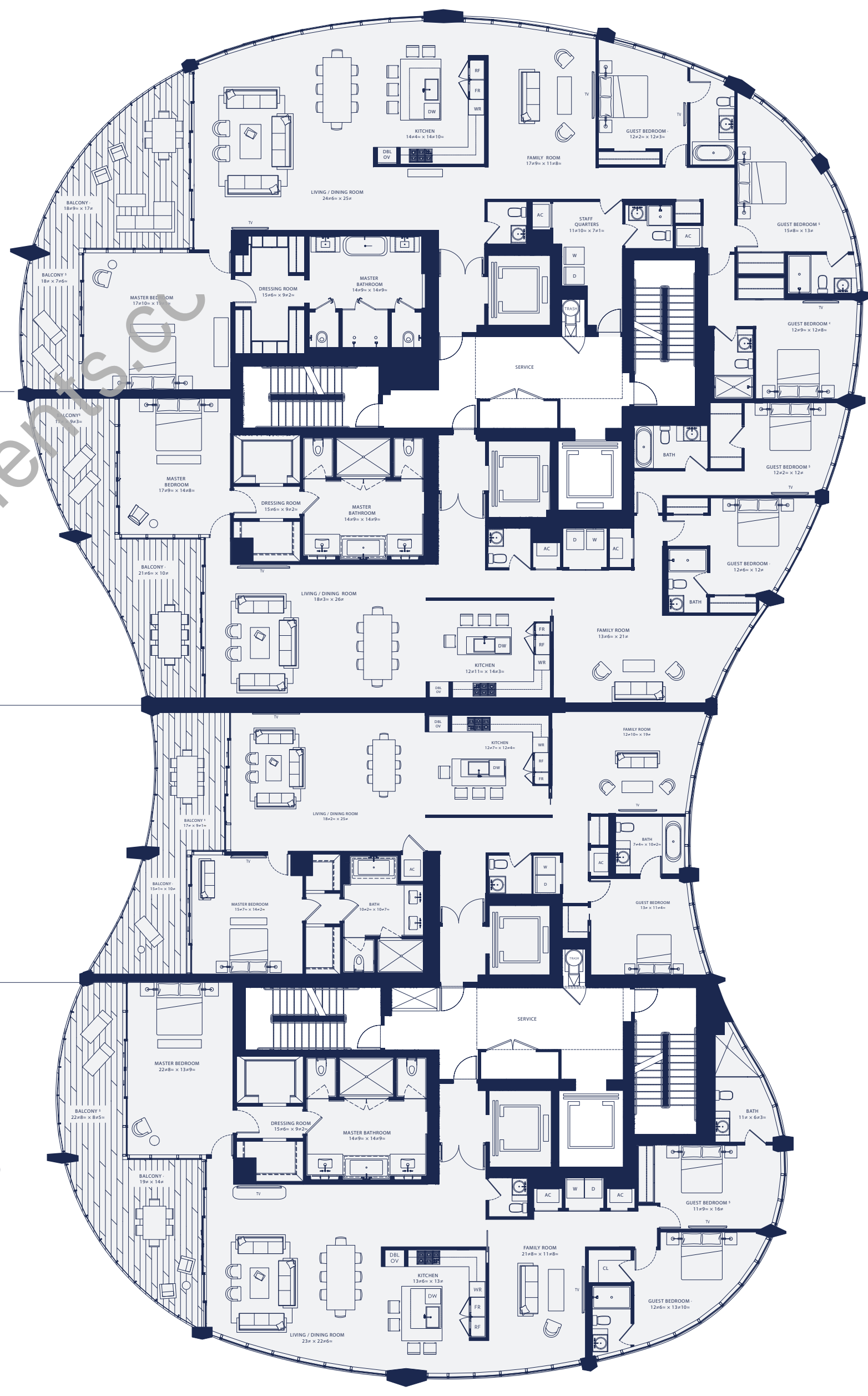
FLOOR TO CEILING WINDOWS WITH BAY & GROVE VIEWS
PRIVATE BAYFRONT TERRACES WITH BAY VIEWS

RESIDENCE A

RESIDENCE B

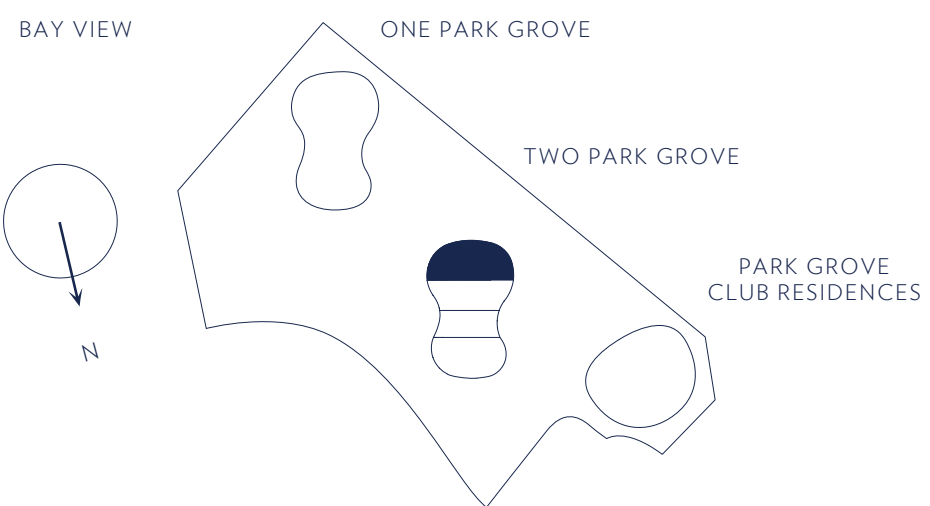
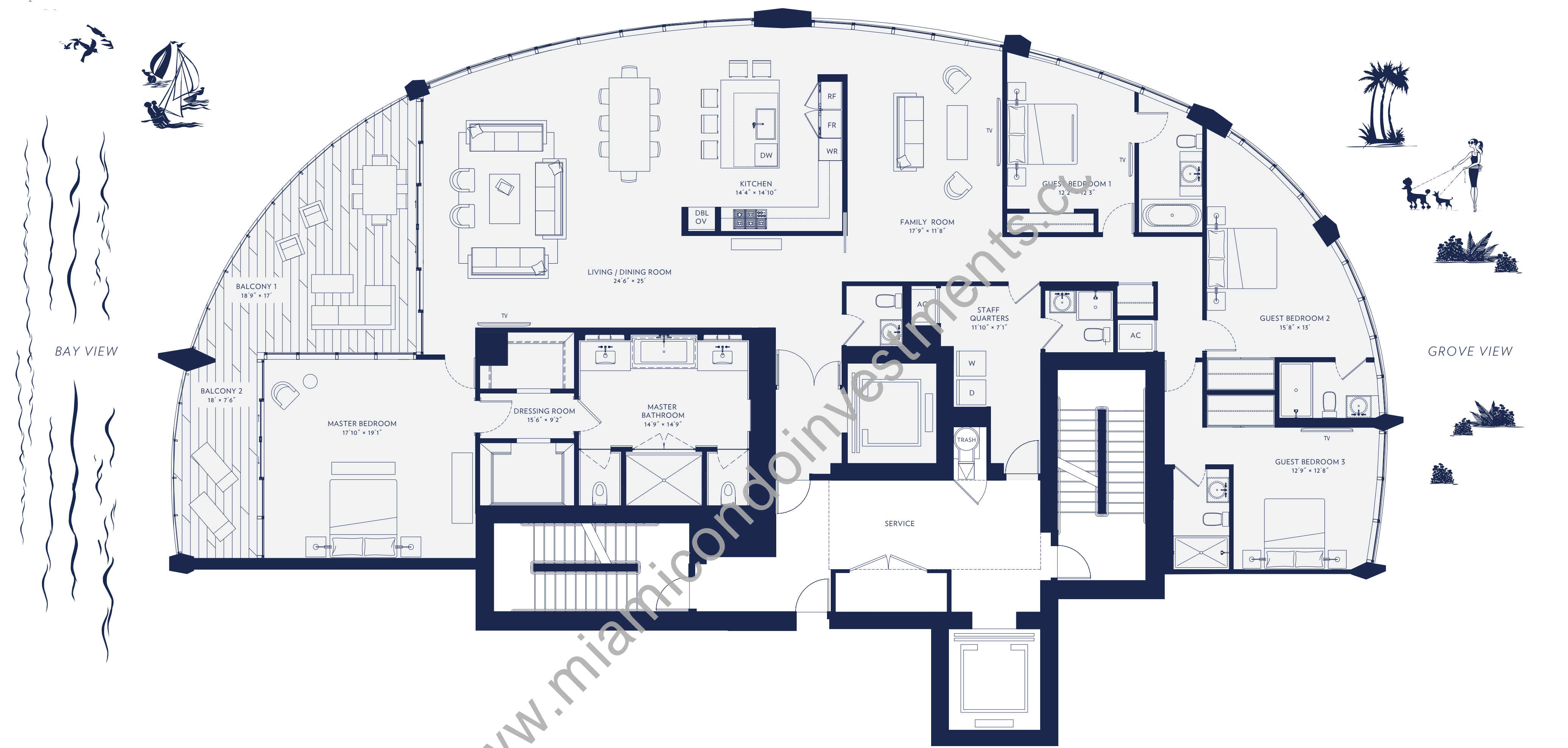
RESIDENCE C

RESIDENCE D



Stated dimensions are measured to the exterior boundaries of the exterior walls and the centerline of interior demising walls and in fact vary from the dimensions that would be determined by using the description and definition of the "Unit" set forth in the Declaration (which generally only includes the interior airspace between the perimeter walls and excludes interior structural components). Note that measurements of rooms set forth on this floor plan are generally taken at the greatest points of each given room (as if the room were a perfect rectangle), without regard for any cutouts. Accordingly, the area of the actual room will typically be smaller than the product obtained by multiplying the stated length times width. All dimensions are approximate and may vary with actual construction, and all floor plans and development plans are subject to change.

RESIDENCE A

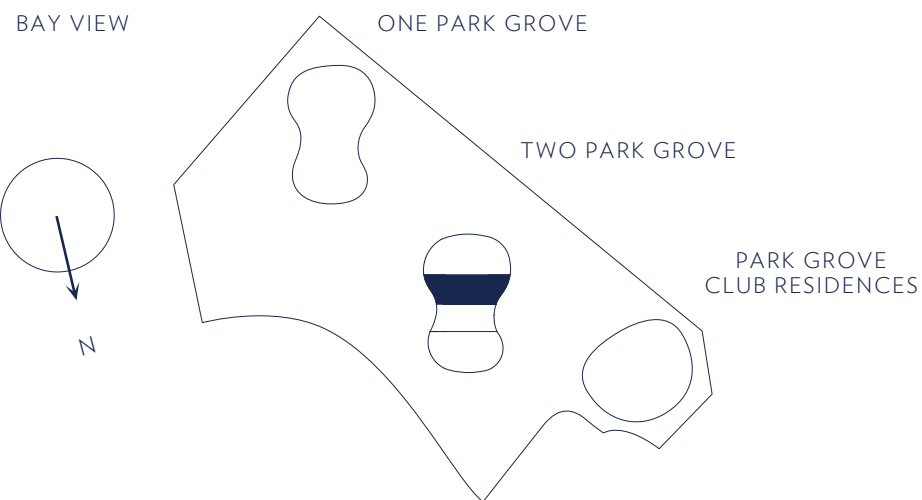
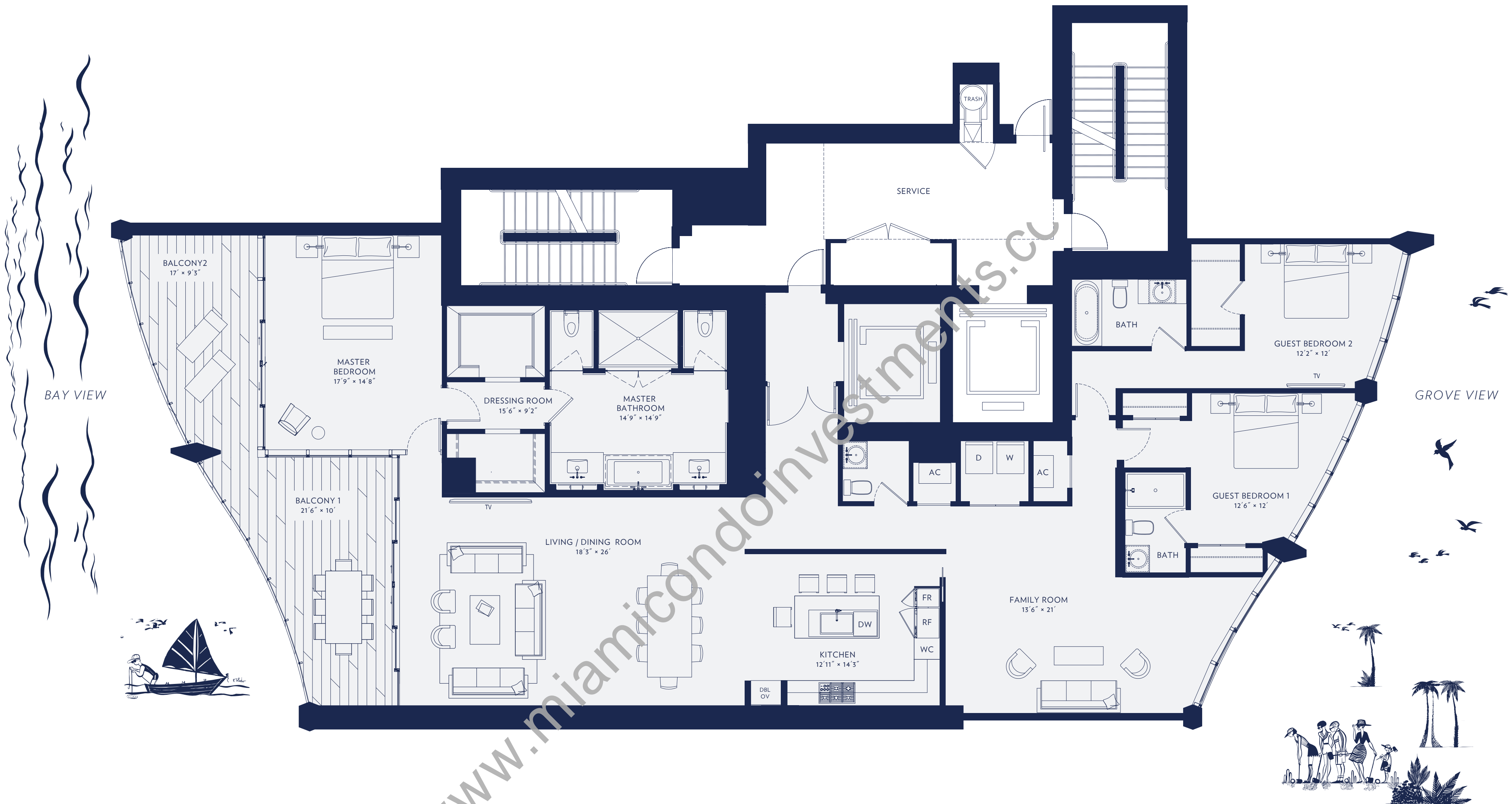


4 BEDROOMS
5 BATHROOMS
1 POWDER ROOM
1 STAFF ROOM
3,592 SQ FT · 334 SQ M INTERIOR
442 SQ FT · 41 SQ M EXTERIOR
4,034 SQ FT · 375 SQ M TOTAL

- 12 FOOT FLOOR TO CEILING GLASS OVERLOOKING BISCAYNE BAY
- PRIVATE OVER-SIZED WATERFRONT TERRACES
- EXPANSIVE DINING AND ENTERTAINING AREAS
- PRIVATE CORNER MASTER BEDROOM WITH WALK-IN CLOSET
- DOUBLE SIZE SHOWER
- HIS & HERS WATER CLOSETS
- HIS & HERS VANITIES
- BEDROOMS WITH EN SUITE BATHROOMS
- EAT-IN CHEF'S KITCHEN WITH ISLAND, WOLF AND SUBZERO APPLIANCES
- STAFF ROOM WITH EN SUITE BATH
- KITCHENS & BATHS DESIGNED BY WILLIAM SOFIELD

Stated dimensions are measured to the exterior boundaries of the exterior walls and the centerline of interior demising walls and in fact vary from the dimensions that would be determined by using the description and definition of the "Unit" set forth in the Declaration (which generally only includes the interior airspace between the perimeter walls and excludes interior structural components). Note that measurements of rooms set forth on this floor plan are generally taken at the greatest points of each given room (as if the room were a perfect rectangle), without regard for any cutouts. Accordingly, the area of the actual room will typically be smaller than the product obtained by multiplying the stated length times width. All dimensions are approximate and may vary with actual construction, and all floor plans and development plans are subject to change.

RESIDENCE B

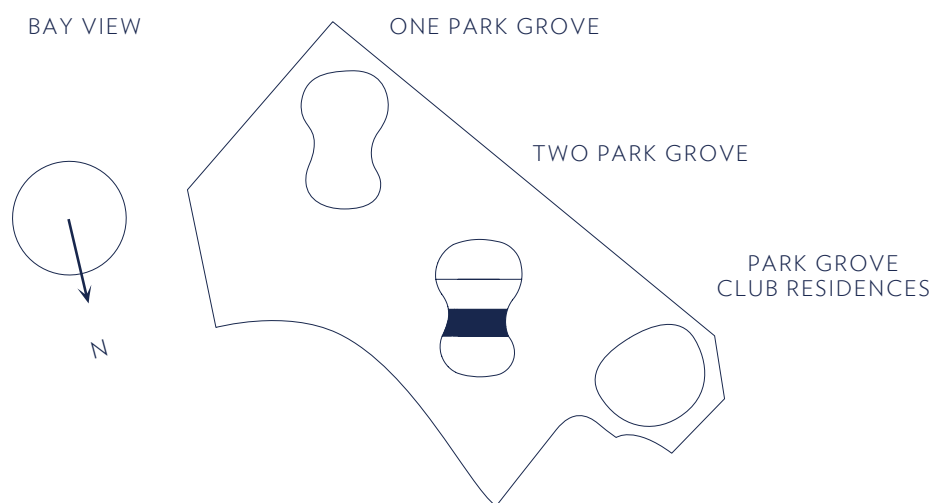


3 BEDROOMS
3 BATHROOMS
1 POWDER ROOM
4th BEDROOM OPTION
2,884 SQ FT · 268 SQ M INTERIOR
393 SQ FT · 37 SQ M EXTERIOR
3,277 SQ FT · 304 SQ M TOTAL

- 12 FOOT FLOOR TO CEILING GLASS OVERLOOKING BISCAYNE BAY
- PRIVATE OVER-SIZED WATERFRONT TERRACES
- EXPANSIVE DINING AND ENTERTAINING AREAS
- PRIVATE CORNER MASTER BEDROOM WITH WALK-IN CLOSET
- DOUBLE SIZE SHOWER
- HIS & HERS WATER CLOSETS
- HIS & HERS VANITIES
- BEDROOMS WITH EN SUITE BATHROOMS
- EAT-IN CHEF'S KITCHEN WITH ISLAND, WOLF AND SUBZERO APPLIANCES
- STAFF ROOM WITH EN SUITE BATH
- KITCHENS & BATHS DESIGNED BY WILLIAM SOFIELD

Stated dimensions are measured to the exterior boundaries of the exterior walls and the centerline of interior demising walls and in fact vary from the dimensions that would be determined by using the description and definition of the "Unit" set forth in the Declaration (which generally only includes the interior airspace between the perimeter walls and excludes interior structural components). Note that measurements of rooms set forth on this floor plan are generally taken at the greatest points of each given room (as if the room were a perfect rectangle), without regard for any cutouts. Accordingly, the area of the actual room will typically be smaller than the product obtained by multiplying the stated length times width. All dimensions are approximate and may vary with actual construction, and all floor plans and development plans are subject to change.

RESIDENCE C



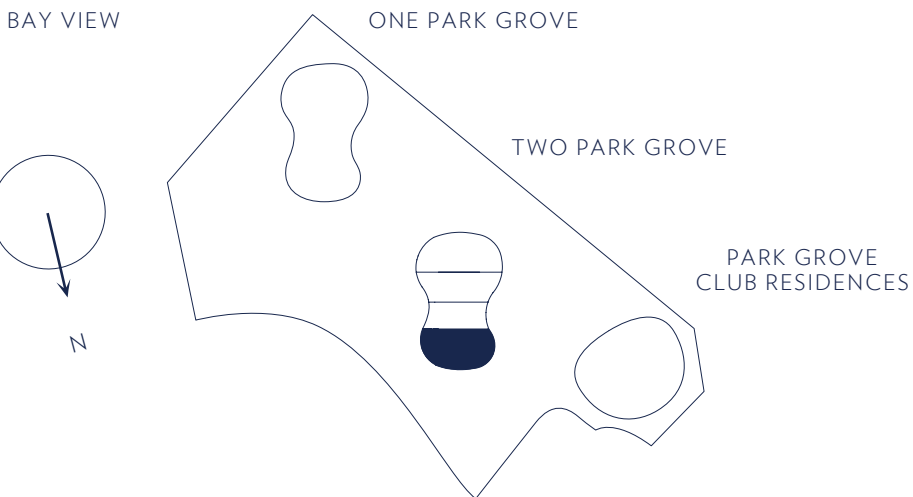
2 BEDROOMS
2 BATHROOMS
1 POWDER ROOM
3rd BEDROOM OPTION
2,232 SQ FT · 207 SQ M INTERIOR
314 SQ FT · 29 SQ M EXTERIOR
2,546 SQ FT · 236 SQ M TOTAL

12 FOOT FLOOR TO CEILING GLASS OVERLOOKING BISCAYNE BAY
PRIVATE OVER-SIZED WATERFRONT TERRACES
EXPANSIVE DINING AND ENTERTAINING AREAS
PRIVATE CORNER MASTER BEDROOM WITH WALK-IN CLOSET
DOUBLE SIZE SHOWER

HIS & HERS WATER CLOSETS
HIS & HERS VANITIES
BEDROOMS WITH EN SUITE BATHROOMS
EAT-IN CHEF'S KITCHEN WITH ISLAND, WOLF AND SUBZERO APPLIANCES
STAFF ROOM WITH EN SUITE BATH
KITCHENS & BATHS DESIGNED BY WILLIAM SOFIELD

Stated dimensions are measured to the exterior boundaries of the exterior walls and the centerline of interior demising walls and in fact vary from the dimensions that would be determined by using the description and definition of the "Unit" set forth in the Declaration (which generally only includes the interior airspace between the perimeter walls and excludes interior structural components). Note that measurements of rooms set forth on this floor plan are generally taken at the greatest points of each given room (as if the room were a perfect rectangle), without regard for any cutouts. Accordingly, the area of the actual room will typically be smaller than the product obtained by multiplying the stated length times width. All dimensions are approximate and may vary with actual construction, and all floor plans and development plans are subject to change.

RESIDENCE D



3 BEDROOMS
3 BATHROOMS
1 POWDER ROOM
2,917 SQ FT · 271 SQ M INTERIOR
439 SQ FT · 41 SQ M EXTERIOR
3,356 SQ FT · 312 SQ M TOTAL

- 12 FOOT FLOOR TO CEILING GLASS OVERLOOKING BISCAYNE BAY
- PRIVATE OVER-SIZED WATERFRONT TERRACES
- EXPANSIVE DINING AND ENTERTAINING AREAS
- PRIVATE CORNER MASTER BEDROOM WITH WALK-IN CLOSET
- DOUBLE SIZE SHOWER
- HIS & HERS WATER CLOSETS
- HIS & HERS VANITIES
- BEDROOMS WITH EN SUITE BATHROOMS
- EAT-IN CHEF'S KITCHEN WITH ISLAND, WOLF AND SUBZERO APPLIANCES
- STAFF ROOM WITH EN SUITE BATH
- KITCHENS & BATHS DESIGNED BY WILLIAM SOFIELD

Stated dimensions are measured to the exterior boundaries of the exterior walls and the centerline of interior demising walls and in fact vary from the dimensions that would be determined by using the description and definition of the "Unit" set forth in the Declaration (which generally only includes the interior airspace between the perimeter walls and excludes interior structural components). Note that measurements of rooms set forth on this floor plan are generally taken at the greatest points of each given room (as if the room were a perfect rectangle), without regard for any cutouts. Accordingly, the area of the actual room will typically be smaller than the product obtained by multiplying the stated length times width. All dimensions are approximate and may vary with actual construction, and all floor plans and development plans are subject to change.