



ONE PARK GROVE

OMA · REM KOOLHAAS

Coconut Grove, Miami



BISCAYNE
BAY

RESIDENCE A

RESIDENCE B

RESIDENCE C

DOWNTOWN



BISCAYNE
BAY

Stated square footages and dimensions are measured to the exterior boundaries of the exterior walls and the centerline of interior demising walls and in fact vary from the square footage and dimensions that would be determined by using the description and definition of the "Unit" set forth in the Declaration (which generally only includes the interior airspace between the perimeter walls and excludes all interior structural components and other common elements). This method is generally used in sales materials and is provided to allow a prospective buyer to compare the Units with units in other condominium projects that utilize the same method. Measurements of rooms set forth on this floor plan are generally taken at the farthest points of each given room (as if the room were a perfect rectangle), without regard for any cutouts or variations. Accordingly, the area of the actual room will typically be smaller than the product obtained by multiplying the stated length and width. All dimensions are estimates which will vary with actual construction, and all floor plans, specifications and other development plans are subject to change and will not necessarily accurately reflect the final plans and specifications for the development.



BISCAYNE
BAY



BISCAYNE
BAY

PENTHOUSE B

DOWNTOWN

Stated square footages and dimensions are measured to the exterior boundaries of the exterior walls and the centerline of interior demising walls and in fact vary from the square footage and dimensions that would be determined by using the description and definition of the "Unit" set forth in the Declaration (which generally only includes the interior airspace between the perimeter walls and excludes all interior structural components and other common elements). This method is generally used in sales materials and is provided to allow a prospective buyer to compare the Units with units in other condominium projects that utilize the same method. Measurements of rooms set forth on this floor plan are generally taken at the farthest points of each given room (as if the room were a perfect rectangle), without regard for any cutouts or variations. Accordingly, the area of the actual room will typically be smaller than the product obtained by multiplying the stated length and width. All dimensions are estimates which will vary with actual construction, and all floor plans, specifications and other development plans are subject to change and will not necessarily accurately reflect the final plans and specifications for the development.



RESIDENCE A

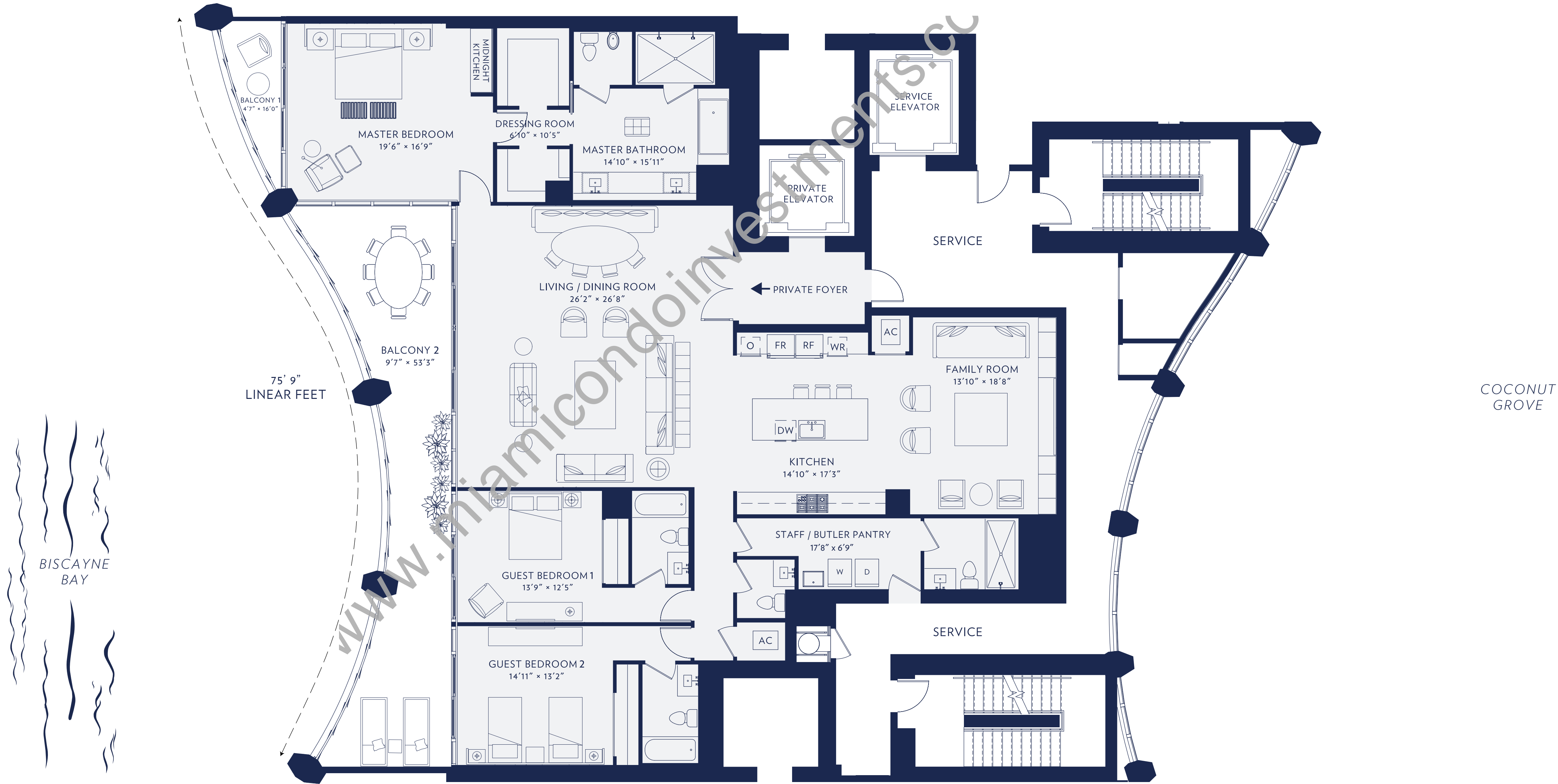
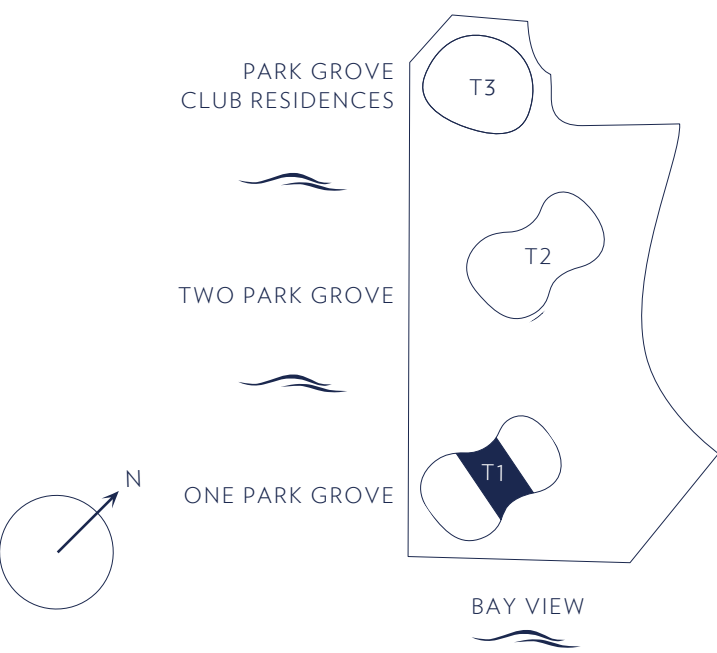
RESIDENCE B

3,732 SQ FT / 357 SQ M TOTAL

3 BEDROOMS
4 BATHROOMS
1 POWDER ROOM

3,154 SQ FT / 293 SQ M INTERIOR
578 SQ FT / 54 SQ M EXTERIOR

- 12 FOOT FLOOR-TO-CEILING GLASS
OVERLOOKING BISCAYNE BAY
- PRIVATE OVERSIZED
WATERFRONT TERRACES
- THREE BEDROOMS
- GENEROUS MASTER SUITE WITH
MIDNIGHT KITCHEN, HIS & HER
DRESSING ROOMS
- MASTER BATH WITH DOUBLE-SIZED
SHOWER, SOAKING TUBS,
HIS & HER VANITIES,
PRIVATE W.C. WITH BIDET
- KITCHENS AND BATHS DESIGNED BY
WILLIAM SOFIELD



Stated square footages and dimensions are measured to the exterior boundaries of the exterior walls and the centerline of interior demising walls and in fact vary from the square footage and dimensions that would be determined by using the description and definition of the "Unit" set forth in the Declaration (which generally only includes the interior airspace between the perimeter walls and excludes all interior structural components and other common elements). This method is generally used in sales materials and is provided to allow a prospective buyer to compare the Units with units in other condominium projects that utilize the same method. Measurements of rooms set forth on this floor plan are generally taken at the farthest points of each given room (as if the room were a perfect rectangle), without regard for any cutouts or variations. Accordingly, the area of the actual room will typically be smaller than the product obtained by multiplying the stated length and width. All dimensions are estimates which will vary with actual construction, and all floor plans, specifications and other development plans are subject to change and will not necessarily accurately reflect the final plans and specifications for the development.



RESIDENCE C

4,433 SQ FT / 412 SQ M TOTAL

4 BEDROOMS
4 BATHROOMS
1 POWDER ROOM

3,935 SQ FT / 366 SQ M INTERIOR
498 SQ FT / 46 SQ M EXTERIOR

12 FOOT FLOOR-TO-CEILING GLASS
OVERLOOKING BISCAYNE BAY

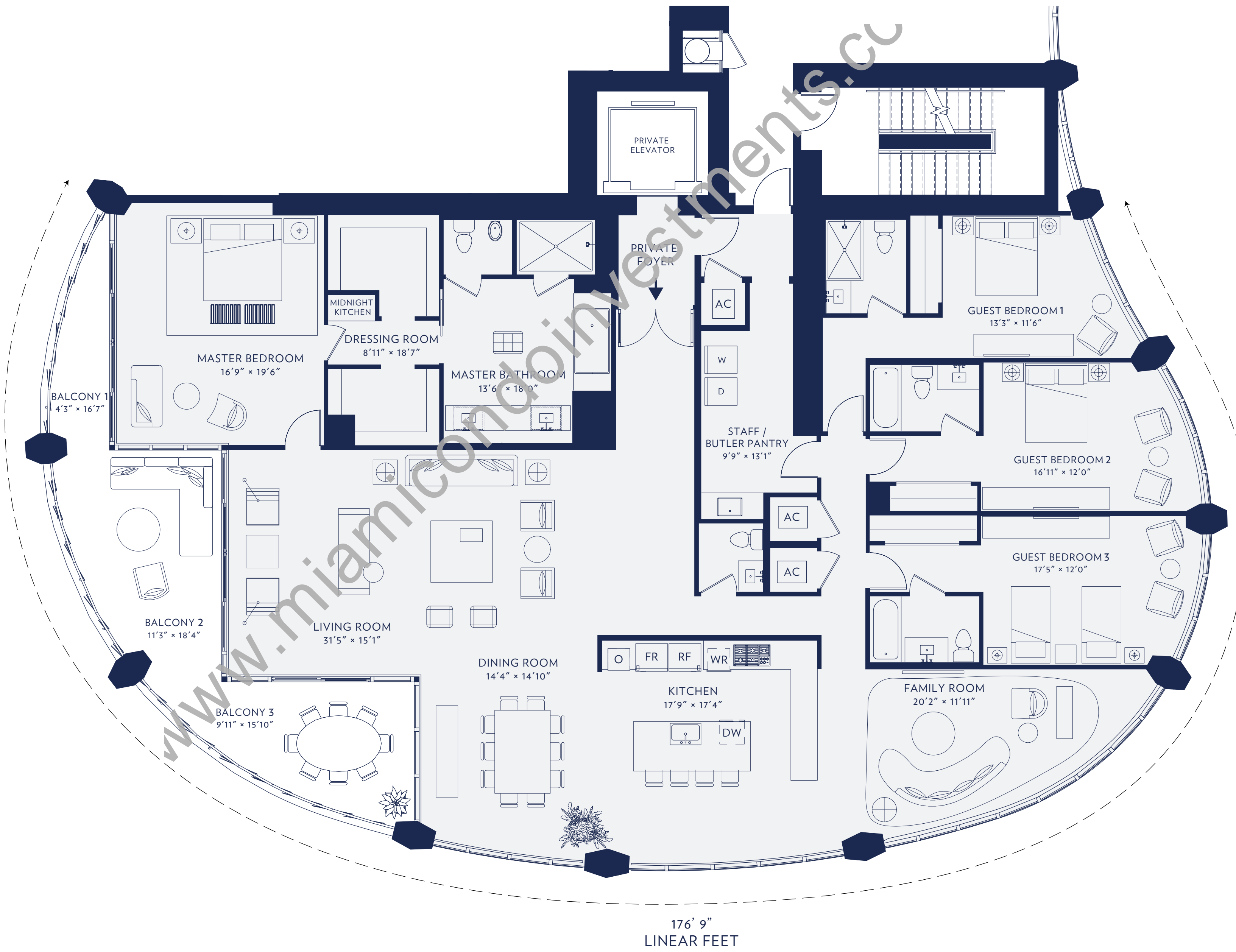
PRIVATE OVERSIZED WATERFRONT TERRACES

FOUR BEDROOMS,
OPTIONAL 5 BEDROOMS

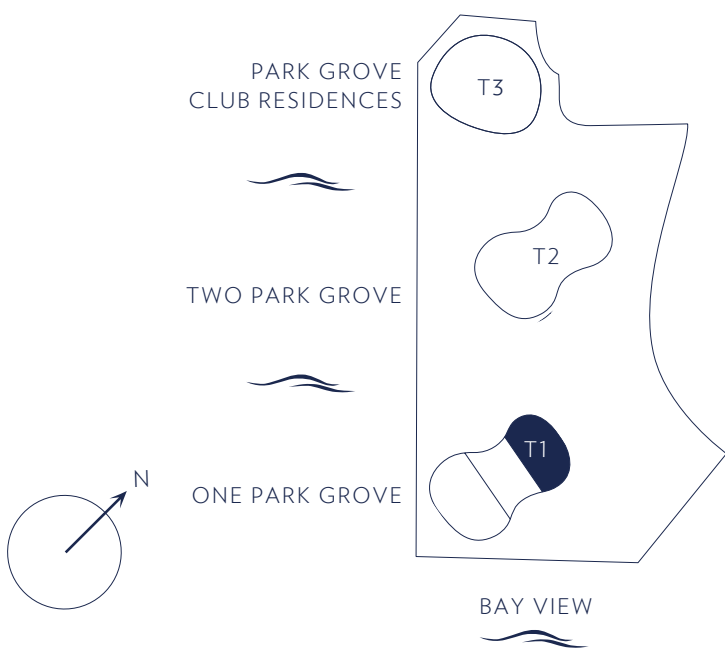
GENEROUS MASTER SUITE WITH
 MIDNIGHT KITCHEN, HIS & HER
 DRESSING ROOMS

MASTER BATH WITH DOUBLE-SIZED
SHOWER, SPAKING TUBS,
HIS & HER VANITIES,
PRIVATE W.C. WITH BIDET

KITCHENS AND BATHS DESIGNED BY
WILLIAM SOFIELD



COCONUT
GROVE



Stated square footages and dimensions are measured to the exterior boundaries of the exterior walls and the centerline of interior demising walls and in fact vary from the square footage and dimensions that would be determined by using the description and definition of the "Unit" set forth in the Declaration (which generally only includes the interior airspace between the perimeter walls and excludes all interior structural components and other common elements). This method is generally used in sales materials and is provided to allow a prospective buyer to compare the Units with units in other condominium projects that utilize the same method. Measurements of rooms set forth on this floor plan are generally taken at the farthest points of each given room (as if the room were a perfect rectangle), without regard for any cutouts or variations. Accordingly, the area of the actual room will typically be smaller than the product obtained by multiplying the stated length and width. All dimensions are estimates which will vary with actual construction, and all floor plans, specifications and other development plans are subject to change and will not necessarily accurately reflect the final plans and specifications for the development.

ONE PARK GROVE



RESIDENCE PH B

5,796 SQ FT / 539 SQ M TOTAL

6 BEDROOMS
6 BATHROOMS
1 POWDER ROOM

5,066 SQ FT / 471 SQ M INTERIOR
730 SQ FT / 68 SQ M EXTERIOR

12 FOOT FLOOR-TO-CEILING GLASS
OVERLOOKING BISCAYNE BAY

EXPANSIVE LIVING ROOM / LOUNGE
LIBRARY / STUDY

GYM OR MEDIA ROOM

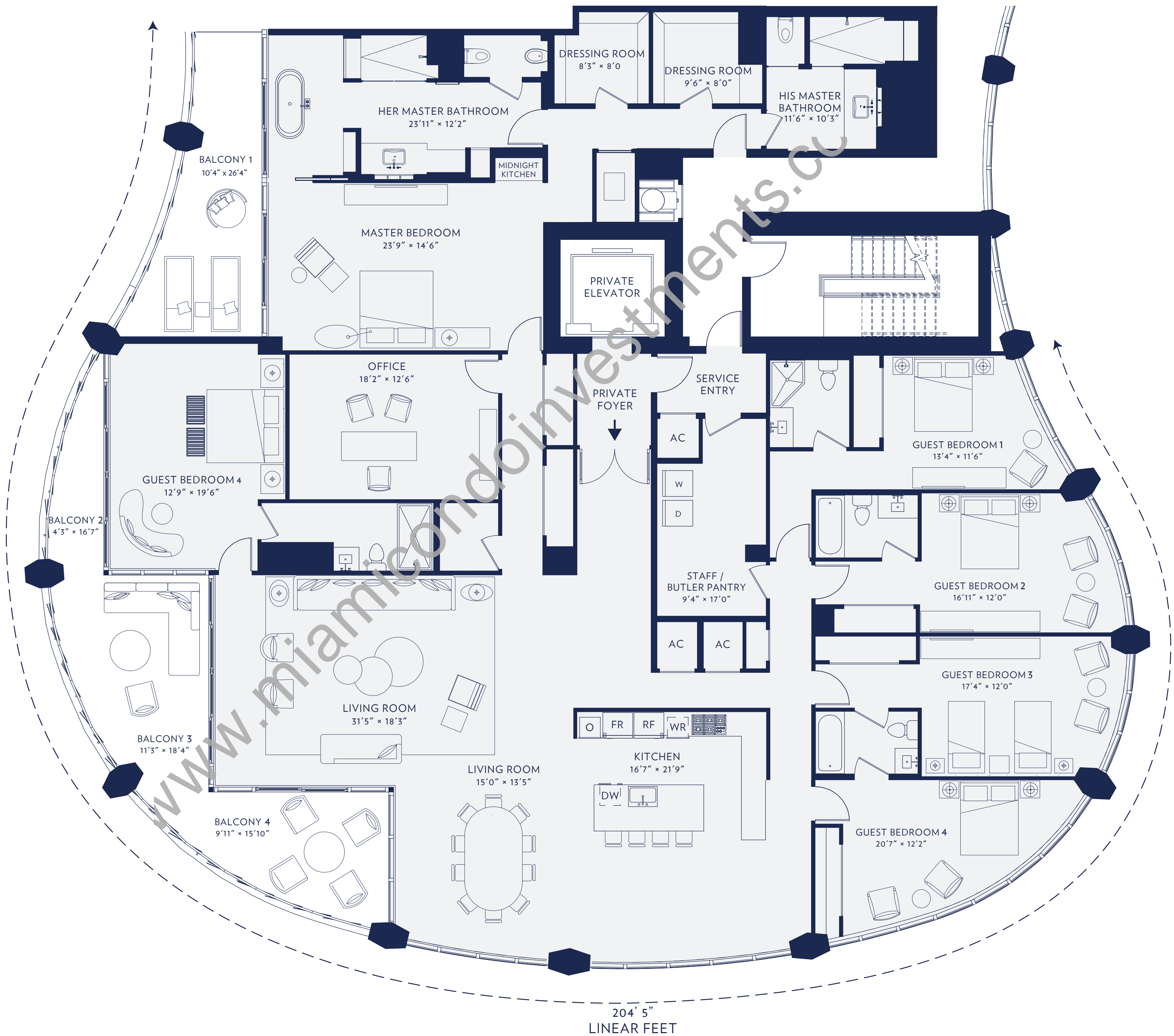
PRIVATE OVERSIZED WATERFRONT TERRACES

SIX BEDROOMS

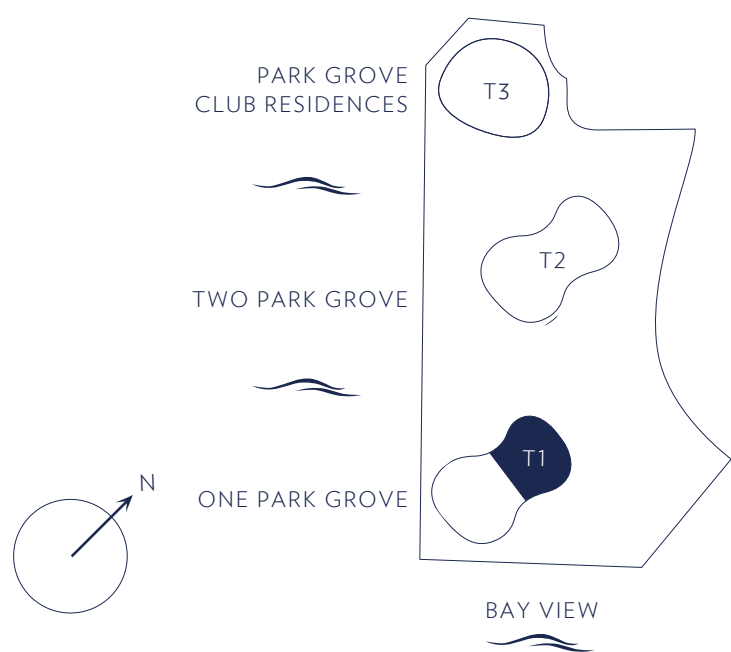
GENEROUS MASTER SUITE WITH
 MIDNIGHT KITCHEN,
 DOUBLE DRESSING ROOMS
 AND PRIVATE TERRACE

MASTER HIS AND HER BATHS
WITH FREE-STANDING BATH

KITCHENS AND BATHS DESIGNED BY
WILLIAM SOFIELD



DOWNTOWN



Stated square footages and dimensions are measured to the exterior boundaries of the exterior walls and the centerline of interior demising walls and in fact vary from the square footage and dimensions that would be determined by using the description and definition of the "Unit" set forth in the Declaration (which generally only includes the interior airspace between the perimeter walls and excludes all interior structural components and other common elements). This method is generally used in sales materials and is provided to allow a prospective buyer to compare the Units with units in other condominium projects that utilize the same method. Measurements of rooms set forth on this floor plan are generally taken at the farthest points of each given room (as if the room were a perfect rectangle), without regard for any cutouts or variations. Accordingly, the area of the actual room will typically be smaller than the product obtained by multiplying the stated length and width. All dimensions are estimates which will vary with actual construction, and all floor plans, specifications and other development plans are subject to change and will not necessarily accurately reflect the final plans and specifications for the development.