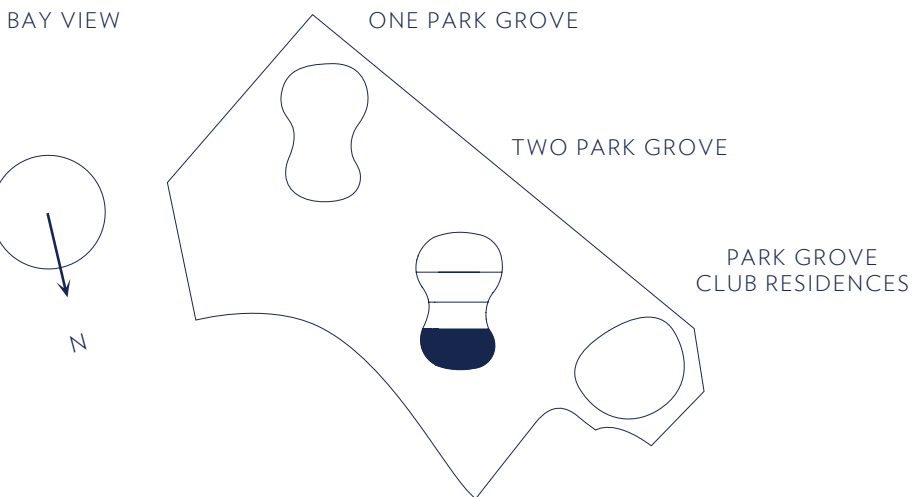
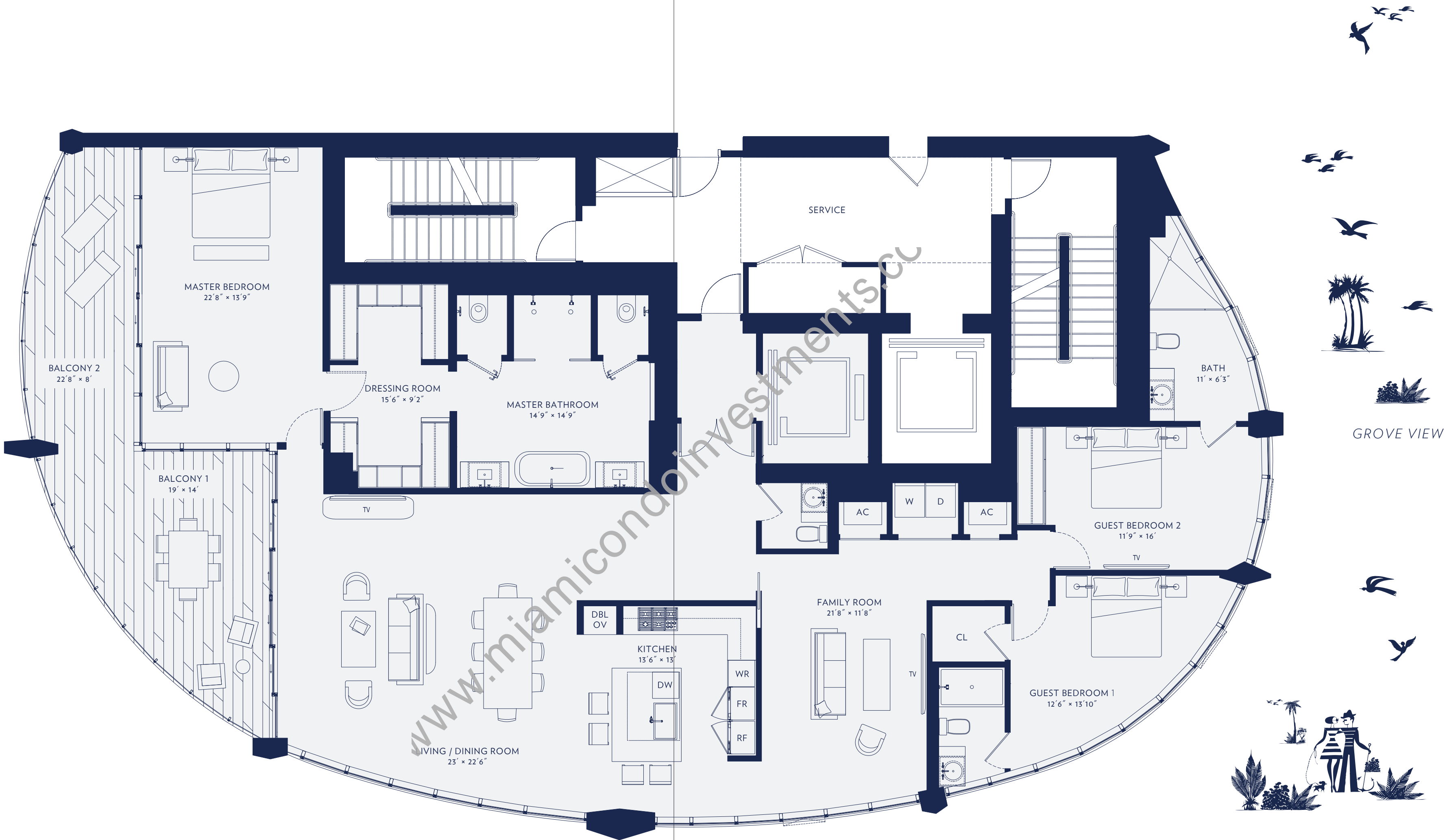


# RESIDENCE D



3 BEDROOMS  
3 BATHROOMS  
1 POWDER ROOM  
2,917 SQ FT · 271 SQ M INTERIOR  
439 SQ FT · 41 SQ M EXTERIOR  
3,356 SQ FT · 312 SQ M TOTAL

- 12 FOOT FLOOR TO CEILING GLASS OVERLOOKING BISCAYNE BAY
- PRIVATE OVER-SIZED WATERFRONT TERRACES
- EXPANSIVE DINING AND ENTERTAINING AREAS
- PRIVATE CORNER MASTER BEDROOM WITH WALK-IN CLOSET
- DOUBLE SIZE SHOWER
- FREESTANDING SOAKING TUB
- HIS & HERS WATER CLOSETS
- HIS & HERS VANITIES
- BEDROOMS WITH EN SUITE BATHROOMS
- EAT-IN CHEF'S KITCHEN WITH ISLAND, WOLF AND SUBZERO APPLIANCES
- KITCHENS & BATHS DESIGNED BY WILLIAM SOFIELD

Stated dimensions are measured to the exterior boundaries of the exterior walls and the centerline of interior demising walls and in fact vary from the dimensions that would be determined by using the description and definition of the "Unit" set forth in the Declaration (which generally only includes the interior airspace between the perimeter walls and excludes interior structural components). Note that measurements of rooms set forth on this floor plan are generally taken at the greatest points of each given room (as if the room were a perfect rectangle), without regard for any cutouts. Accordingly, the area of the actual room will typically be smaller than the product obtained by multiplying the stated length times width. All dimensions are approximate and may vary with actual construction, and all floor plans and development plans are subject to change.