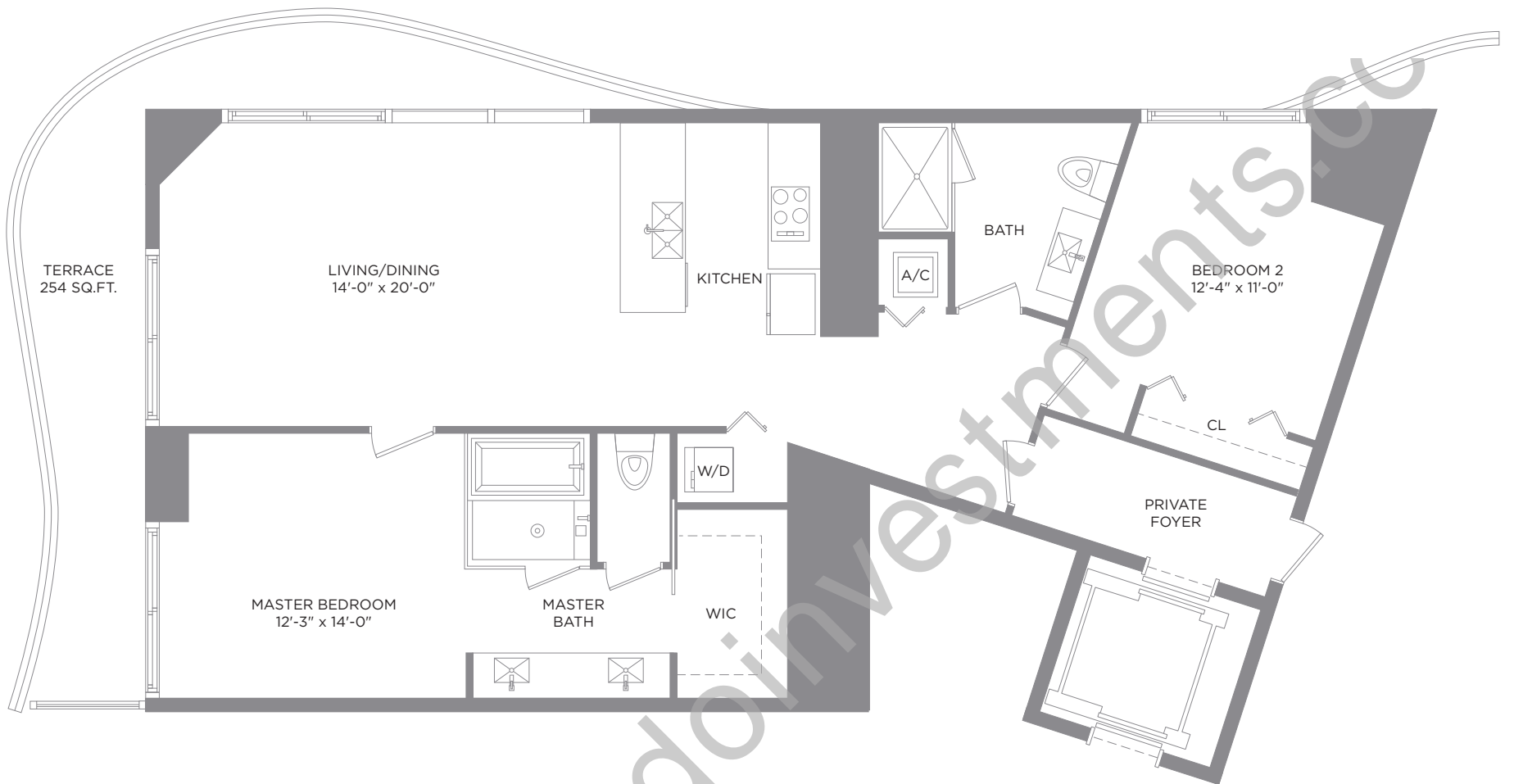




Auberge

RESIDENCES & SPA
MIAMI

AUBERGE RESORTS COLLECTION

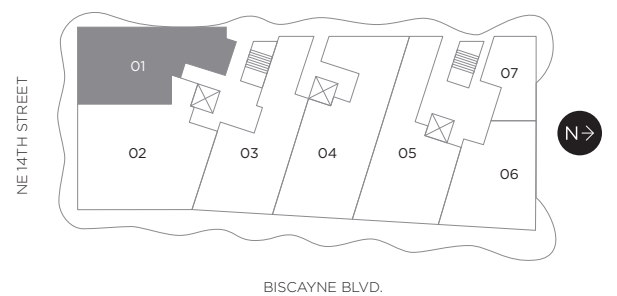


RESIDENCE 01

2 BEDROOMS / 2 BATHS

Floors 14-52

A/C INTERIOR AREA	1,337 SQ. FT.	124.21 SQ. M.
TERRACE AREA	254 SQ. FT.	23.59 SQ. M.
TOTAL RESIDENCE	1,591 SQ. FT.	147.80 SQ. M.



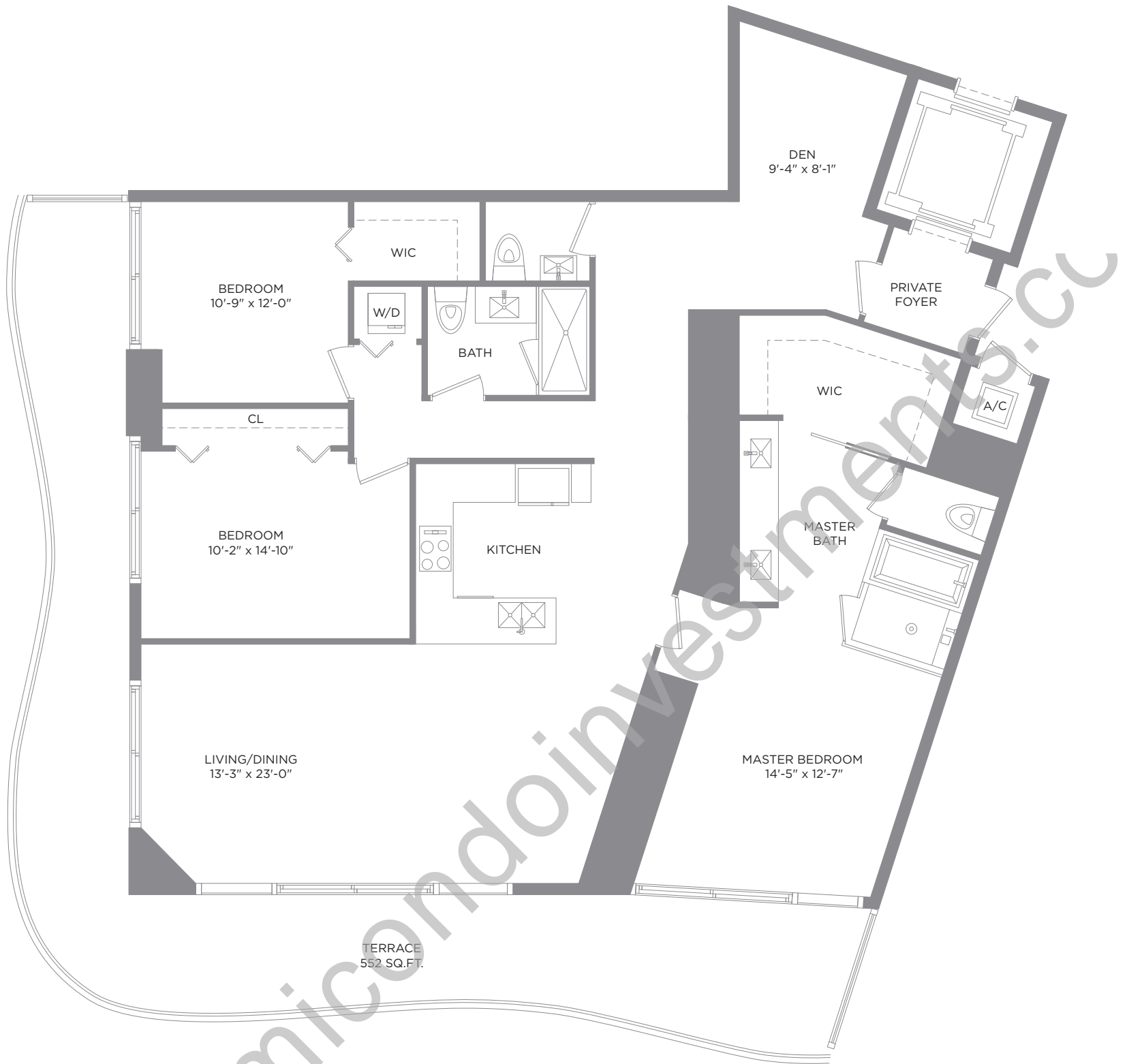
There are various methods for calculating the square footage of a Unit and depending on the method of calculation, the quoted square footage of a Unit may vary. The dimensions in the Unit shown in these floor plans have been calculated from the exterior boundaries of the exterior walls to the centerline of interior demising walls, including common elements such as structural walls and other interior structural components of the building and are greater than the dimensions that would be determined by using the description and definition of the "Unit" set forth in the Prospectus and the Declaration. The measurements of a room set forth on this floor plan are generally taken at the greatest points of each given room (as if the room were a perfect rectangle) without regard for any cutouts. Accordingly, the area of the actual room will typically smaller than the product obtained by multiplying the stated length by the stated width. All dimensions are approximate and may vary with actual construction. All floor plans are subject to change. The furnishings and décor illustrated are not included with the purchase of the Unit. Consult the Prospectus for information regarding what is offered with the Unit and the calculation of the Unit square footage and dimensions.



Auberge

RESIDENCES & SPA
MIAMI

AUBERGE RESORTS COLLECTION

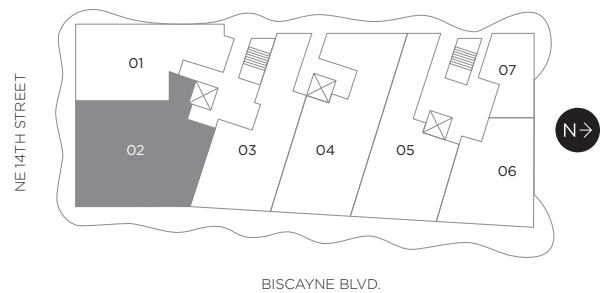


RESIDENCE 02

3 BEDROOMS / 2.5 BATHS & DEN

Floors 14-52

A/C INTERIOR AREA	1,890 SQ. FT.	175.58 SQ. M.
TERRACE AREA	552 SQ. FT.	51.28 SQ. M.
TOTAL RESIDENCE	2,442 SQ. FT.	226.86 SQ. M.



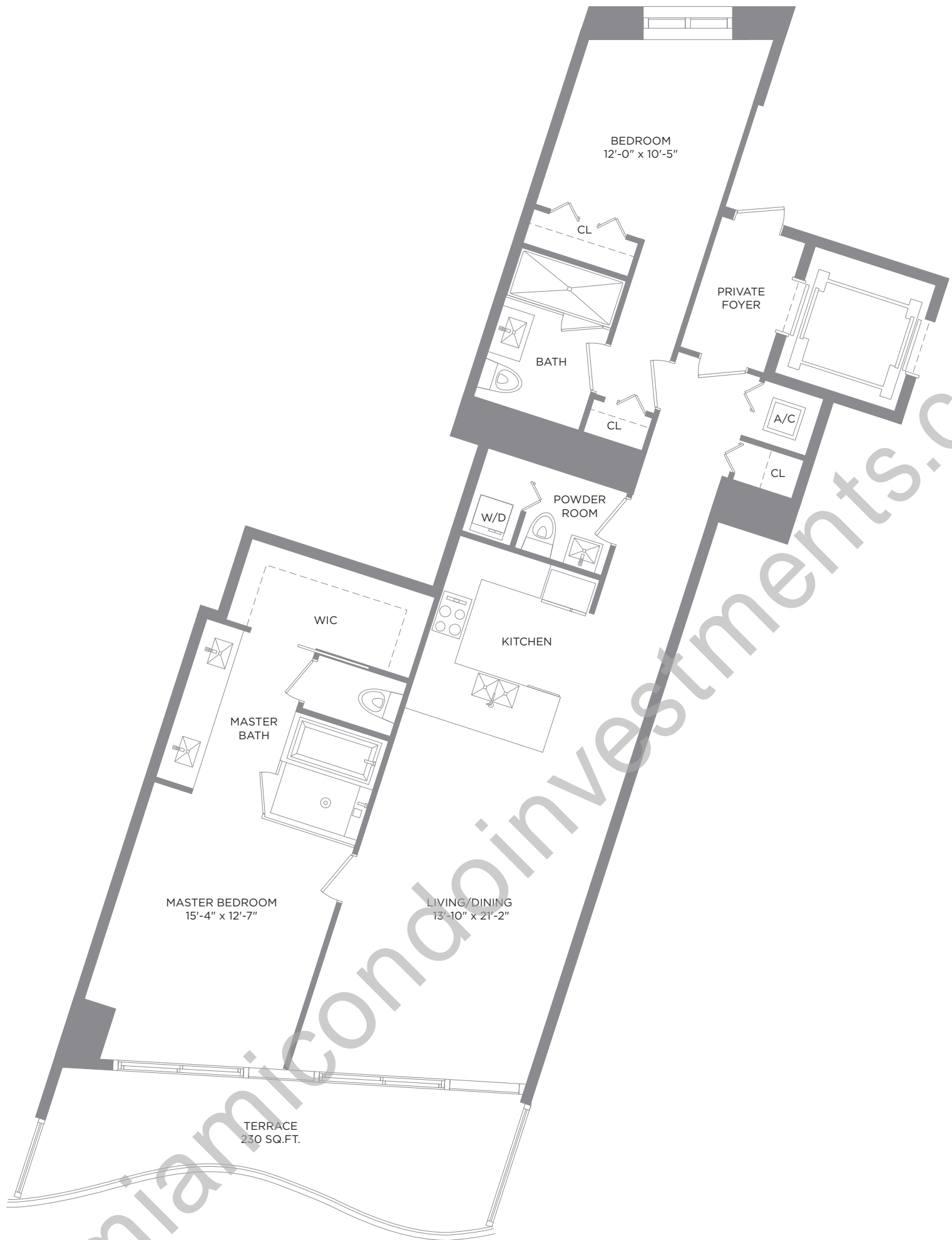
There are various methods for calculating the square footage of a Unit and depending on the method of calculation, the quoted square footage of a Unit may vary. The dimensions in the Unit shown in these floor plans have been calculated from the exterior boundaries of the exterior walls to the centerline of interior demising walls, including common elements such as structural walls and other interior structural components of the building and are greater than the dimensions that would be determined by using the description and definition of the "Unit" set forth in the Prospectus and the Declaration. The measurements of a room set forth on this floor plan are generally taken at the greatest points of each given room (as if the room were a perfect rectangle) without regard for any cutouts. Accordingly, the area of the actual room will typically smaller than the product obtained by multiplying the stated length by the stated width. All dimensions are approximate and may vary with actual construction. All floor plans are subject to change. The furnishings and décor illustrated are not included with the purchase of the Unit. Consult the Prospectus for information regarding what is offered with the Unit and the calculation of the Unit square footage and dimensions.



Auberge

RESIDENCES & SPA
MIAMI

AUBERGE RESORTS COLLECTION

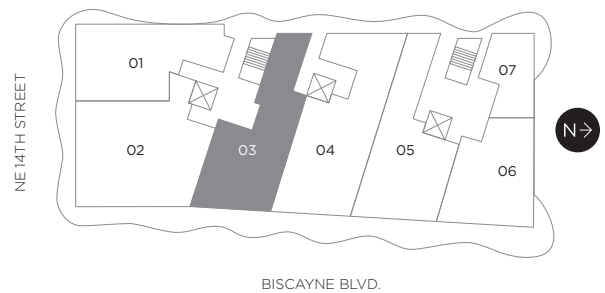


RESIDENCE 03

2 BEDROOMS / 2.5 BATHS

Floors 14-52

A/C INTERIOR AREA	1,438 SQ. FT.	133.59 SQ. M.
TERRACE AREA	230 SQ. FT.	21.36 SQ. M.
TOTAL RESIDENCE	1,668 SQ. FT.	154.95 SQ. M.



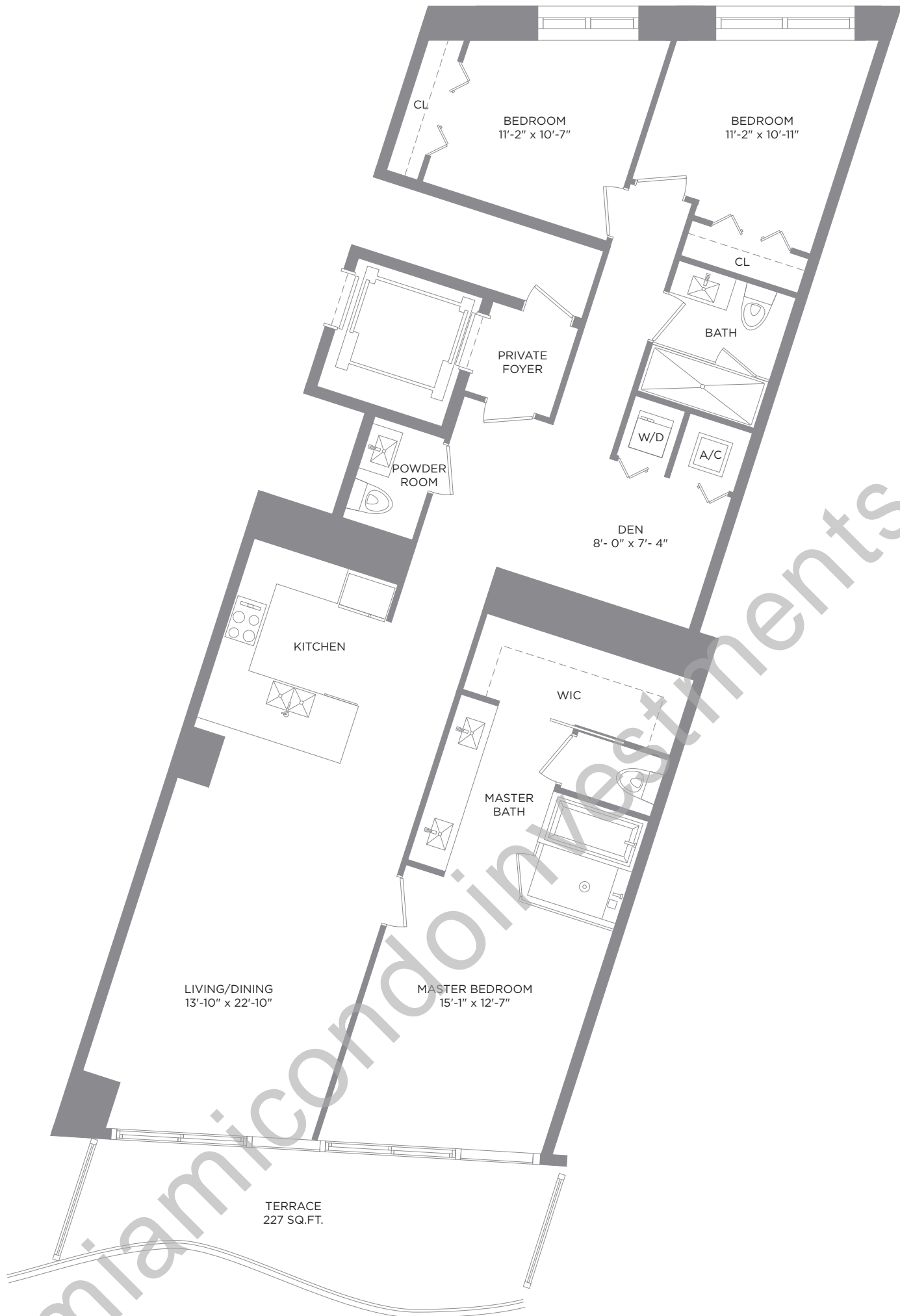
There are various methods for calculating the square footage of a Unit and depending on the method of calculation, the quoted square footage of a Unit may vary. The dimensions in the Unit shown in these floor plans have been calculated from the exterior boundaries of the exterior walls to the centerline of interior demising walls, including common elements such as structural walls and other interior structural components of the building and are greater than the dimensions that would be determined by using the description and definition of the "Unit" set forth in the Prospectus and the Declaration. The measurements of a room set forth on this floor plan are generally taken at the greatest points of each given room (as if the room were a perfect rectangle) without regard for any cutouts. Accordingly, the area of the actual room will typically smaller than the product obtained by multiplying the stated length by the stated width. All dimensions are approximate and may vary with actual construction. All floor plans are subject to change. The furnishings and décor illustrated are not included with the purchase of the Unit. Consult the Prospectus for information regarding what is offered with the Unit and the calculation of the Unit square footage and dimensions.



Auberge

RESIDENCES & SPA
MIAMI

AUBERGE RESORTS COLLECTION

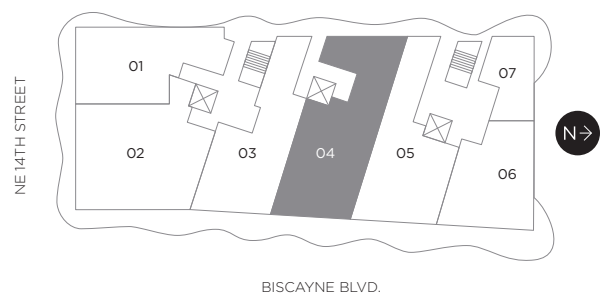


RESIDENCE 04

3 BEDROOMS / 2.5 BATHS & DEN

Floors 14-52

A/C INTERIOR AREA	1,666 SQ. FT.	154.77 SQ. M.
TERRACE AREA	227 SQ. FT.	21.08 SQ. M.
TOTAL RESIDENCE	1,893 SQ. FT.	175.85 SQ. M.



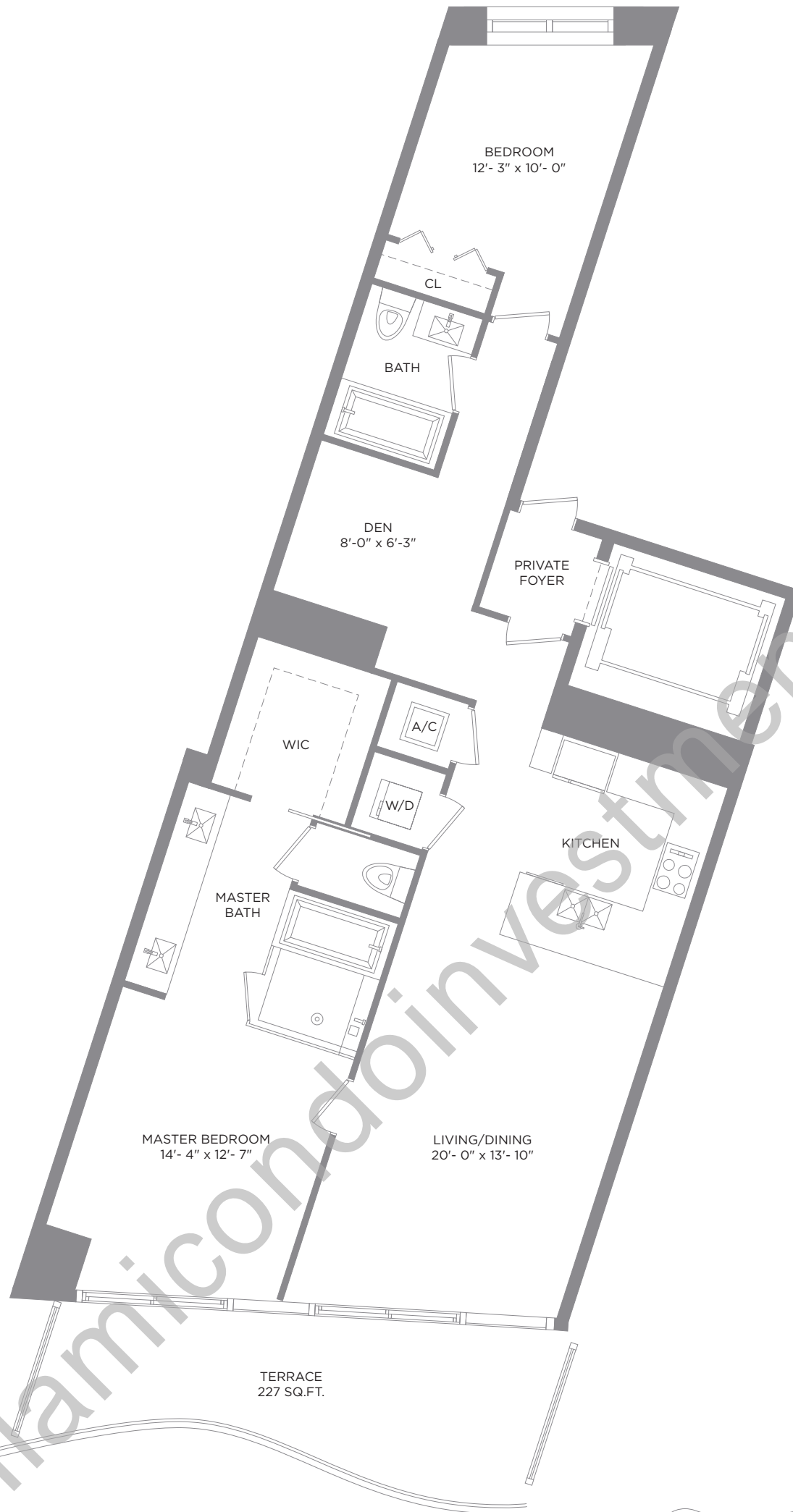
There are various methods for calculating the square footage of a Unit and depending on the method of calculation, the quoted square footage of a Unit may vary. The dimensions in the Unit shown in these floor plans have been calculated from the exterior boundaries of the exterior walls to the centerline of interior demising walls, including common elements such as structural walls and other interior structural components of the building and are greater than the dimensions that would be determined by using the description and definition of the "Unit" set forth in the Prospectus and the Declaration. The measurements of a room set forth on this floor plan are generally taken at the greatest points of each given room (as if the room were a perfect rectangle) without regard for any cutouts. Accordingly, the area of the actual room will typically smaller than the product obtained by multiplying the stated length by the stated width. All dimensions are approximate and may vary with actual construction. All floor plans are subject to change. The furnishings and décor illustrated are not included with the purchase of the Unit. Consult the Prospectus for information regarding what is offered with the Unit and the calculation of the Unit square footage and dimensions.



Auberge

RESIDENCES & SPA
MIAMI

AUBERGE RESORTS COLLECTION

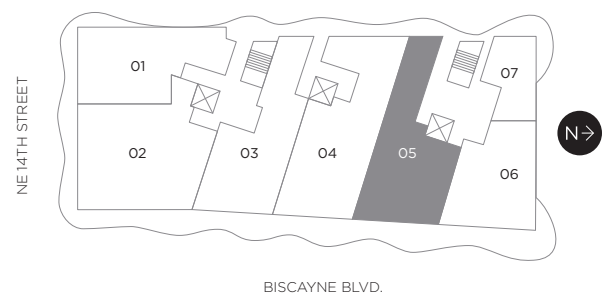


RESIDENCE 05

2 BEDROOMS / 2 BATHS & DEN

Floors 14-52

A/C INTERIOR AREA	1,370 SQ. FT.	127.27 SQ. M.
TERRACE AREA	227 SQ. FT.	21.08 SQ. M.
TOTAL RESIDENCE	1,597 SQ. FT.	148.35 SQ. M.



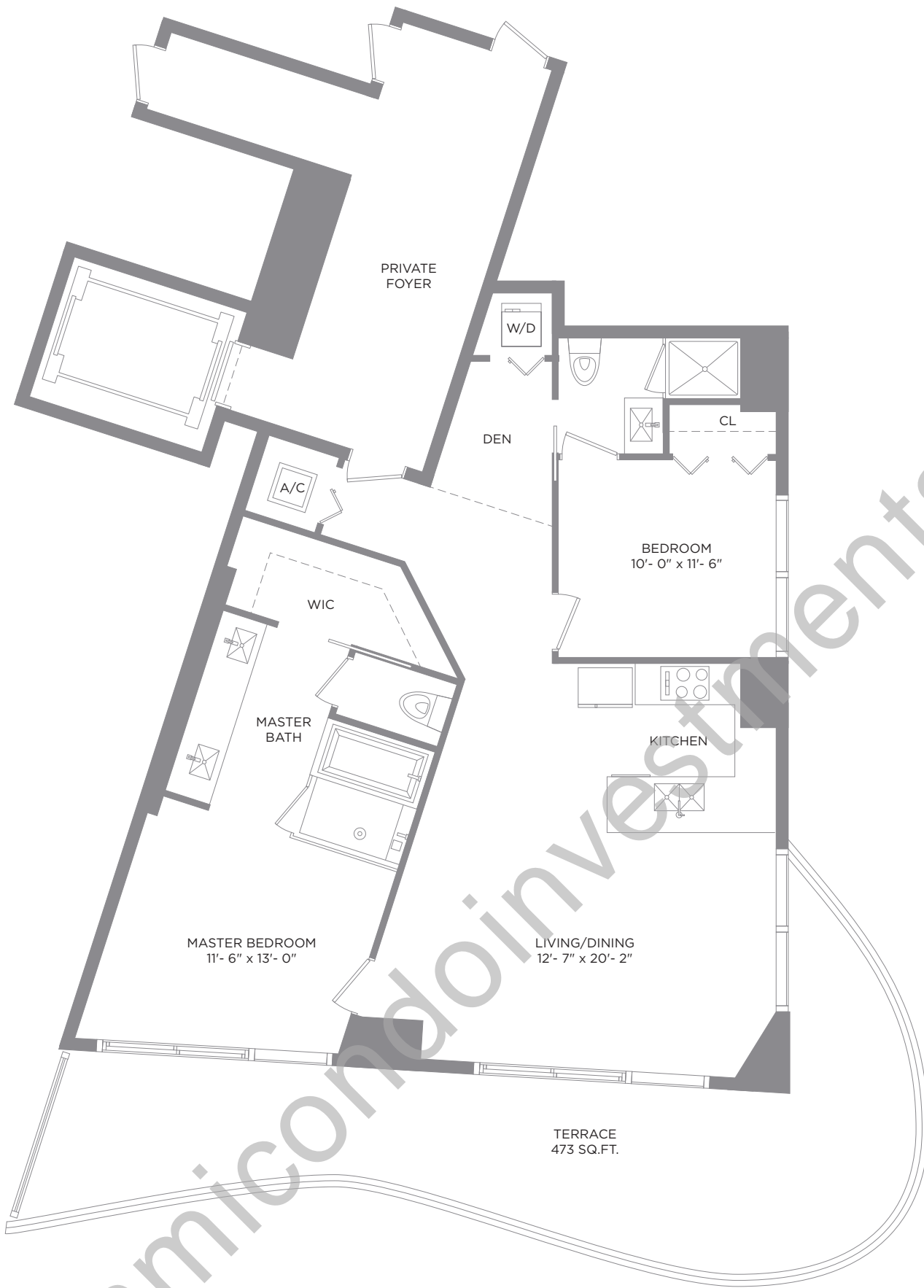
There are various methods for calculating the square footage of a Unit and depending on the method of calculation, the quoted square footage of a Unit may vary. The dimensions in the Unit shown in these floor plans have been calculated from the exterior boundaries of the exterior walls to the centerline of interior demising walls, including common elements such as structural walls and other interior structural components of the building and are greater than the dimensions that would be determined by using the description and definition of the "Unit" set forth in the Prospectus and the Declaration. The measurements of a room set forth on this floor plan are generally taken at the greatest points of each given room (as if the room were a perfect rectangle) without regard for any cutouts. Accordingly, the area of the actual room will typically smaller than the product obtained by multiplying the stated length by the stated width. All dimensions are approximate and may vary with actual construction. All floor plans are subject to change. The furnishings and décor illustrated are not included with the purchase of the Unit. Consult the Prospectus for information regarding what is offered with the Unit and the calculation of the Unit square footage and dimensions.



Auberge

RESIDENCES & SPA
MIAMI

AUBERGE RESORTS COLLECTION

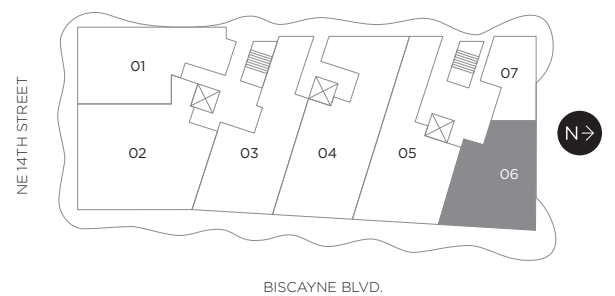


RESIDENCE 06

2 BEDROOMS / 2 BATHS & DEN

Floors 14-23

A/C INTERIOR AREA	1,184 SQ. FT.	109.99 SQ. M.
TERRACE AREA	473 SQ. FT.	43.94 SQ. M.
TOTAL RESIDENCE	1,657 SQ. FT.	153.93 SQ. M.



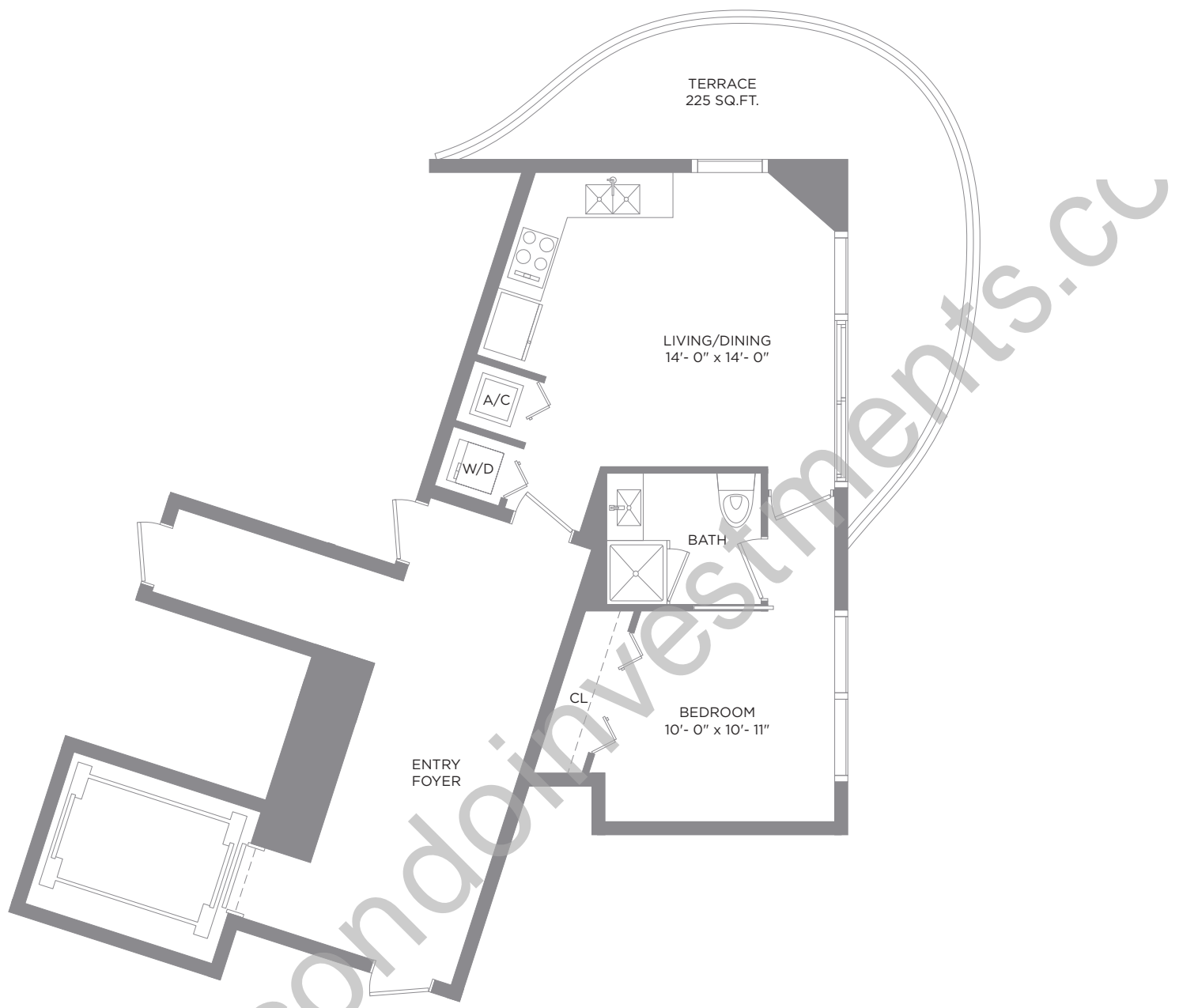
There are various methods for calculating the square footage of a Unit and depending on the method of calculation, the quoted square footage of a Unit may vary. The dimensions in the Unit shown in these floor plans have been calculated from the exterior boundaries of the exterior walls to the centerline of interior demising walls, including common elements such as structural walls and other interior structural components of the building and are greater than the dimensions that would be determined by using the description and definition of the "Unit" set forth in the Prospectus and the Declaration. The measurements of a room set forth on this floor plan are generally taken at the greatest points of each given room (as if the room were a perfect rectangle) without regard for any cutouts. Accordingly, the area of the actual room will typically smaller than the product obtained by multiplying the stated length by the stated width. All dimensions are approximate and may vary with actual construction. All floor plans are subject to change. The furnishings and décor illustrated are not included with the purchase of the Unit. Consult the Prospectus for information regarding what is offered with the Unit and the calculation of the Unit square footage and dimensions.



Auberge

RESIDENCES & SPA
MIAMI

AUBERGE RESORTS COLLECTION

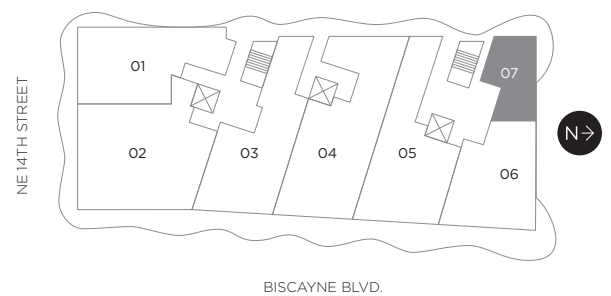


RESIDENCE 07

1 BEDROOM / 1 BATH

Floors 14-23

A/C INTERIOR AREA	515 SQ. FT.	47.84 SQ. M.
TERRACE AREA	225 SQ. FT.	23.69 SQ. M.
TOTAL RESIDENCE	770 SQ. FT.	71.53 SQ. M.



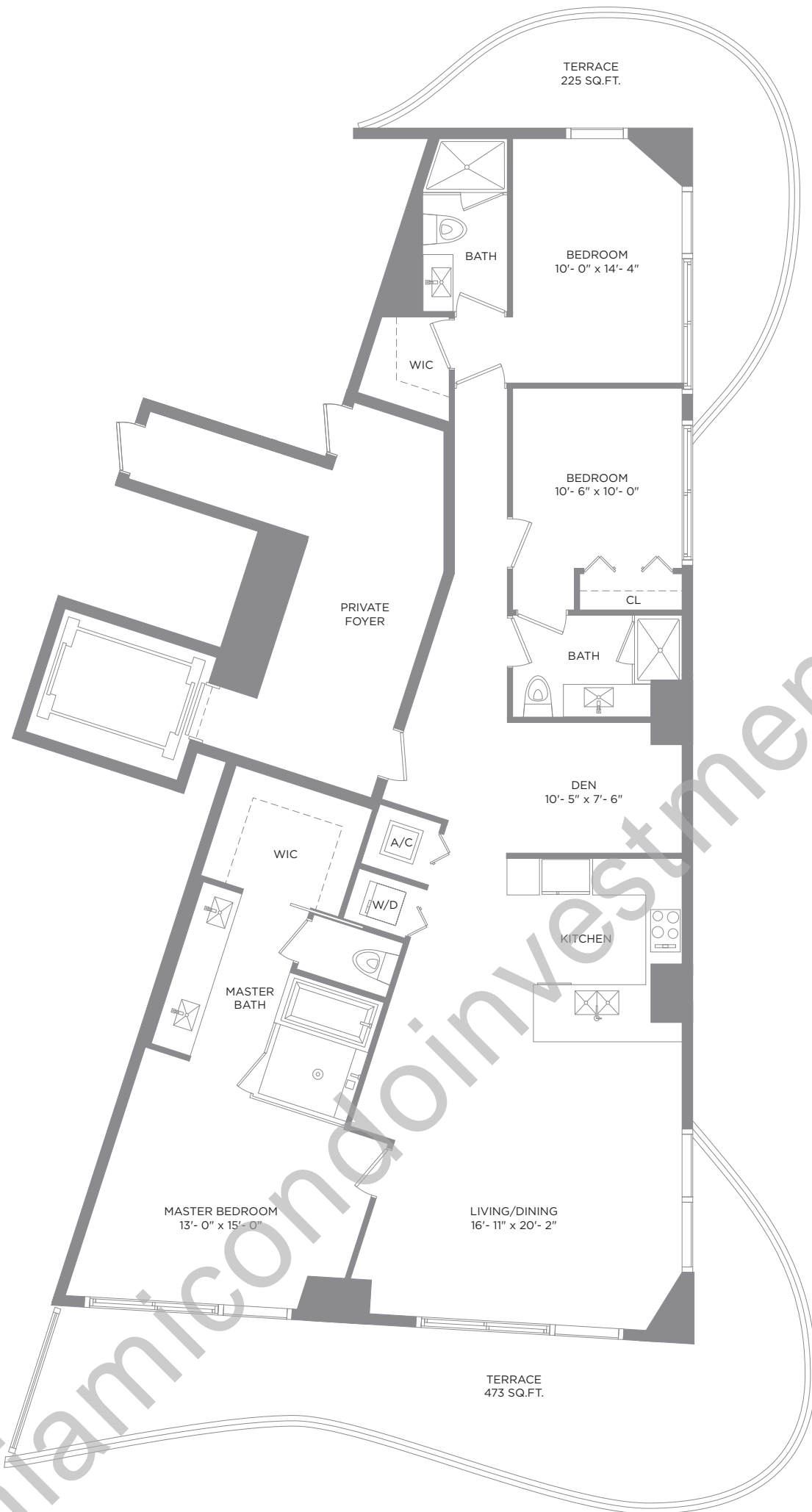
There are various methods for calculating the square footage of a Unit and depending on the method of calculation, the quoted square footage of a Unit may vary. The dimensions in the Unit shown in these floor plans have been calculated from the exterior boundaries of the exterior walls to the centerline of interior demising walls, including common elements such as structural walls and other interior structural components of the building and are greater than the dimensions that would be determined by using the description and definition of the "Unit" set forth in the Prospectus and the Declaration. The measurements of a room set forth on this floor plan are generally taken at the greatest points of each given room (as if the room were a perfect rectangle) without regard for any cutouts. Accordingly, the area of the actual room will typically smaller than the product obtained by multiplying the stated length by the stated width. All dimensions are approximate and may vary with actual construction. All floor plans are subject to change. The furnishings and décor illustrated are not included with the purchase of the Unit. Consult the Prospectus for information regarding what is offered with the Unit and the calculation of the Unit square footage and dimensions.



Auberge

RESIDENCES & SPA
MIAMI

AUBERGE RESORTS COLLECTION

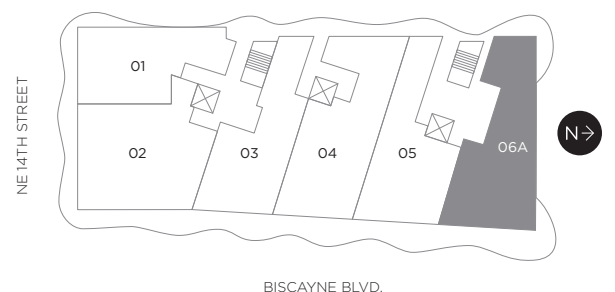


RESIDENCE 06A

3 BEDROOMS / 3 BATHS & DEN

Floors 14-52

A/C INTERIOR AREA	1,964 SQ. FT.	182.46 SQ. M.
TERRACE AREA	698 SQ. FT.	64.84 SQ. M.
TOTAL RESIDENCE	2,662 SQ. FT.	247.30 SQ. M.



There are various methods for calculating the square footage of a Unit and depending on the method of calculation, the quoted square footage of a Unit may vary. The dimensions in the Unit shown in these floor plans have been calculated from the exterior boundaries of the exterior walls to the centerline of interior demising walls, including common elements such as structural walls and other interior structural components of the building and are greater than the dimensions that would be determined by using the description and definition of the "Unit" set forth in the Prospectus and the Declaration. The measurements of a room set forth on this floor plan are generally taken at the greatest points of each given room (as if the room were a perfect rectangle) without regard for any cutouts. Accordingly, the area of the actual room will typically smaller than the product obtained by multiplying the stated length by the stated width. All dimensions are approximate and may vary with actual construction. All floor plans are subject to change. The furnishings and décor illustrated are not included with the purchase of the Unit. Consult the Prospectus for information regarding what is offered with the Unit and the calculation of the Unit square footage and dimensions.