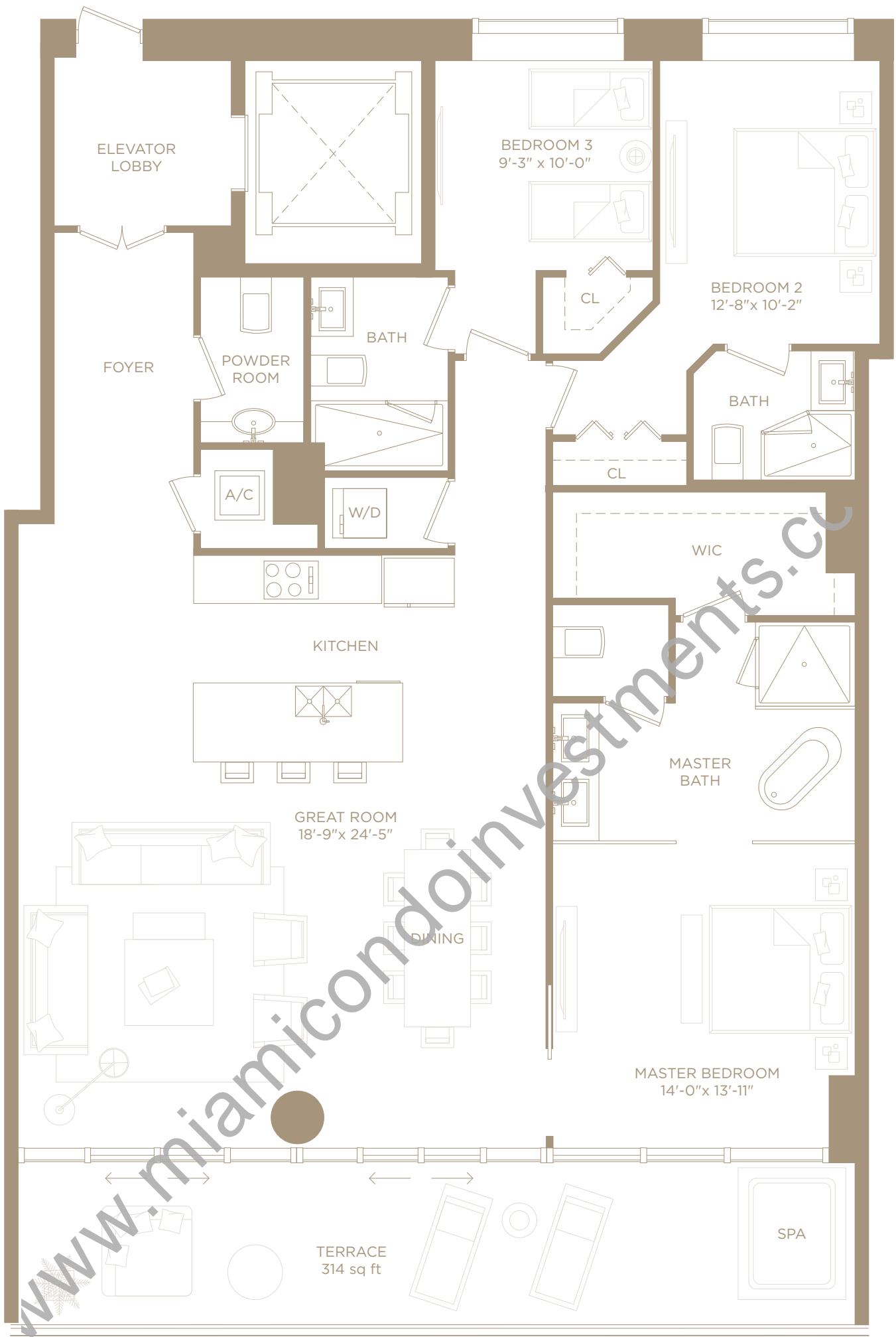


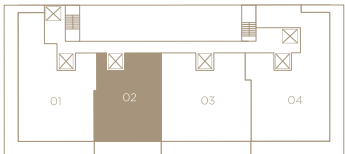
# PENTHOUSE 02

LEVELS 50-53 | 3 BEDROOMS | 3.5 BATHS



BASE TERRACE AS  
DEPICTED IN THIS FLOOR  
PLAN VARIES BY UNIT  
AND LEVELS. REFER TO  
PROSPECTUS FOR ACTUAL  
EXTENDED TERRACE  
CONFIGURATIONS.

N



INTERIOR LIVING AREA  
1,993 SQ.FT.  
185.15 SQ.M.

EXTERIOR LIVING AREA  
314 SQ.FT.  
29.17 SQ.M.

TOTAL LIVING AREA  
2,307 SQ.FT.  
214.33 SQ.M.



There are various methods for calculating the square footage of a Unit and depending on the method of calculation, the quoted square footage of a Unit in advertising materials may vary from the square footage of a Unit as stated or described in the Prospectus and the Declaration. The dimensions in the Unit shown in these floor plans have been calculated from the exterior boundaries of the exterior wall to the centerline of interior demising walls, including common elements such as structural walls and other interior structural components of the building and in fact vary from the dimensions that would be determined by using the description and definition of the "Unit" set forth in the Prospectus and the Declaration. For your reference, the area of the Unit, determined in accordance with the Unit boundaries as defined in the Prospectus and the Declaration are less than the square footage reflected here. The configuration and use of space or the floor plan design may vary from that in the Prospectus and Declaration because the Developer has reserved the right in the Prospectus to make design, dimension, specification, and plan changes at any time, in the Developer's discretion, without notice to Unit buyers. The measurements of room set forth on this floor plan are generally taken at the greatest points of each given room (as if the room were a perfect rectangle) without regard for any cutouts. Accordingly, the area of the actual room will typically be smaller than the product obtained by multiplying the stated length times width. All dimensions are approximate and may vary with actual construction, and all floor plans and development plans are subject to change. The furnishings and décor illustrated are not included with the purchase of the Unit. See Prospectus for additional information regarding what is offered with the Unit and the calculation of the Unit square footage and dimensions.