

PARAMOUNT

MIAMI WORLDCENTER

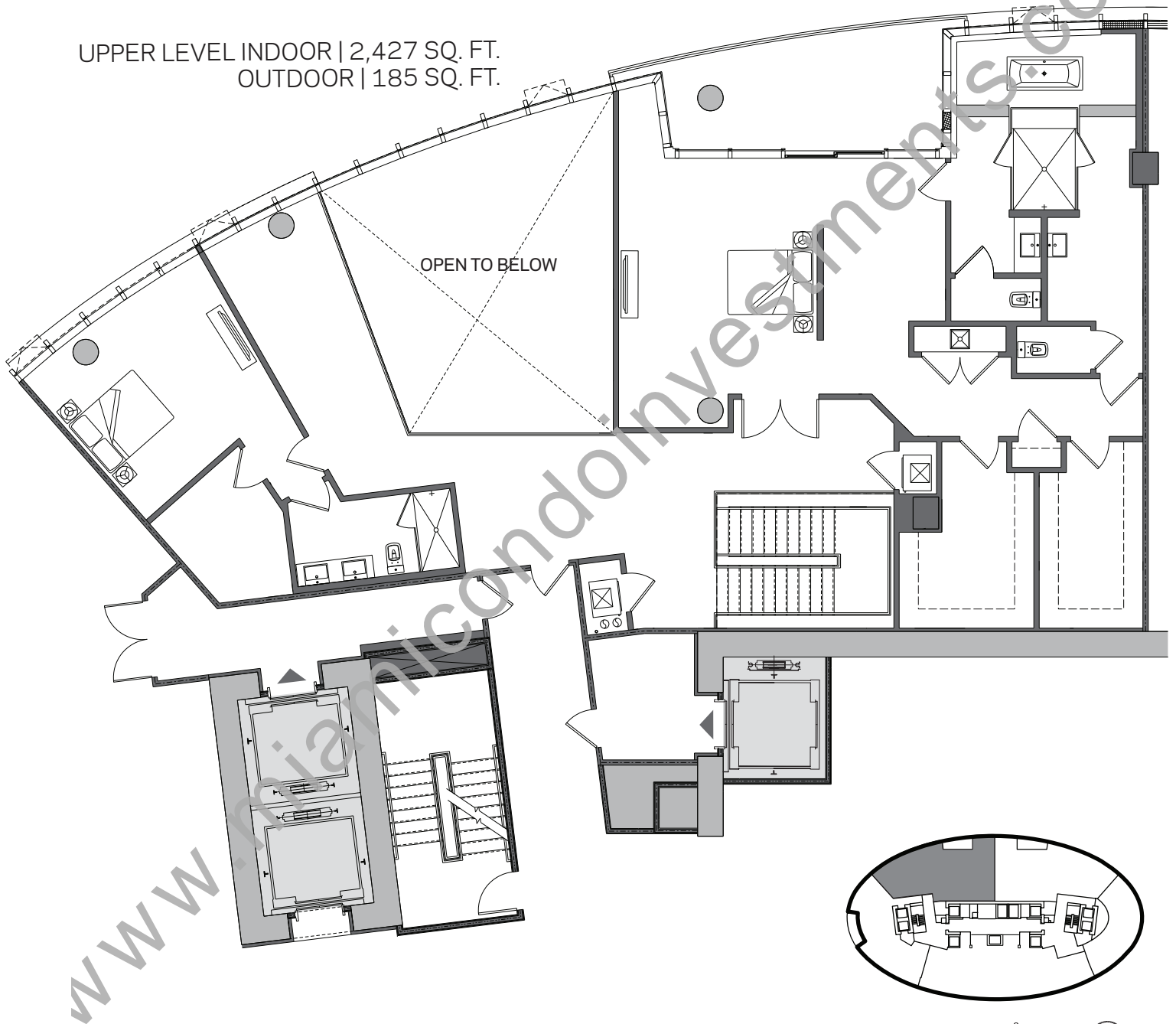


Residence L2 Duplex Upper Level

5 Bedroom + Den | 5.5 Bath

TOTAL:	7,086 sq. ft. 	658 m²
INDOOR:	6,513 sq. ft. 	605 m²
OUTDOOR:	573 sq. ft. 	53 m²

UPPER LEVEL INDOOR | 2,427 SQ. FT.
OUTDOOR | 185 SQ. FT.



These drawings are conceptual only and are for the convenience of reference. They should not be relied upon as representations, express or implied, of the final detail of the residences. Units shown are examples of unit types and may not depict actual units. Stated square footages are ranges for a particular unit type and are measured to the exterior boundaries of the exterior walls and the centerline of interior demising walls and in fact vary from the area that would be determined by using the description and definition of the "Unit" set forth in the Declaration (which generally only includes the interior airspace between the perimeter walls and excludes interior structural components). Note that measurements of rooms set forth on this floor plan are generally taken at the greatest points of each given room (as if the room were a perfect rectangle), without regard for any cutouts. Accordingly, the area of the actual room will typically be smaller than the product obtained by multiplying the stated length times width. All dimensions are approximate and may vary with actual construction, and all floor plans and development plans are subject to change.

PARAMOUNT

MIAMI WORLDCENTER

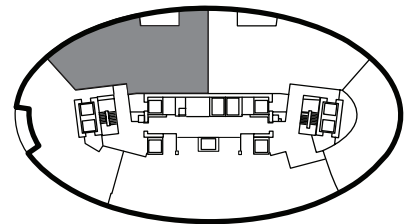
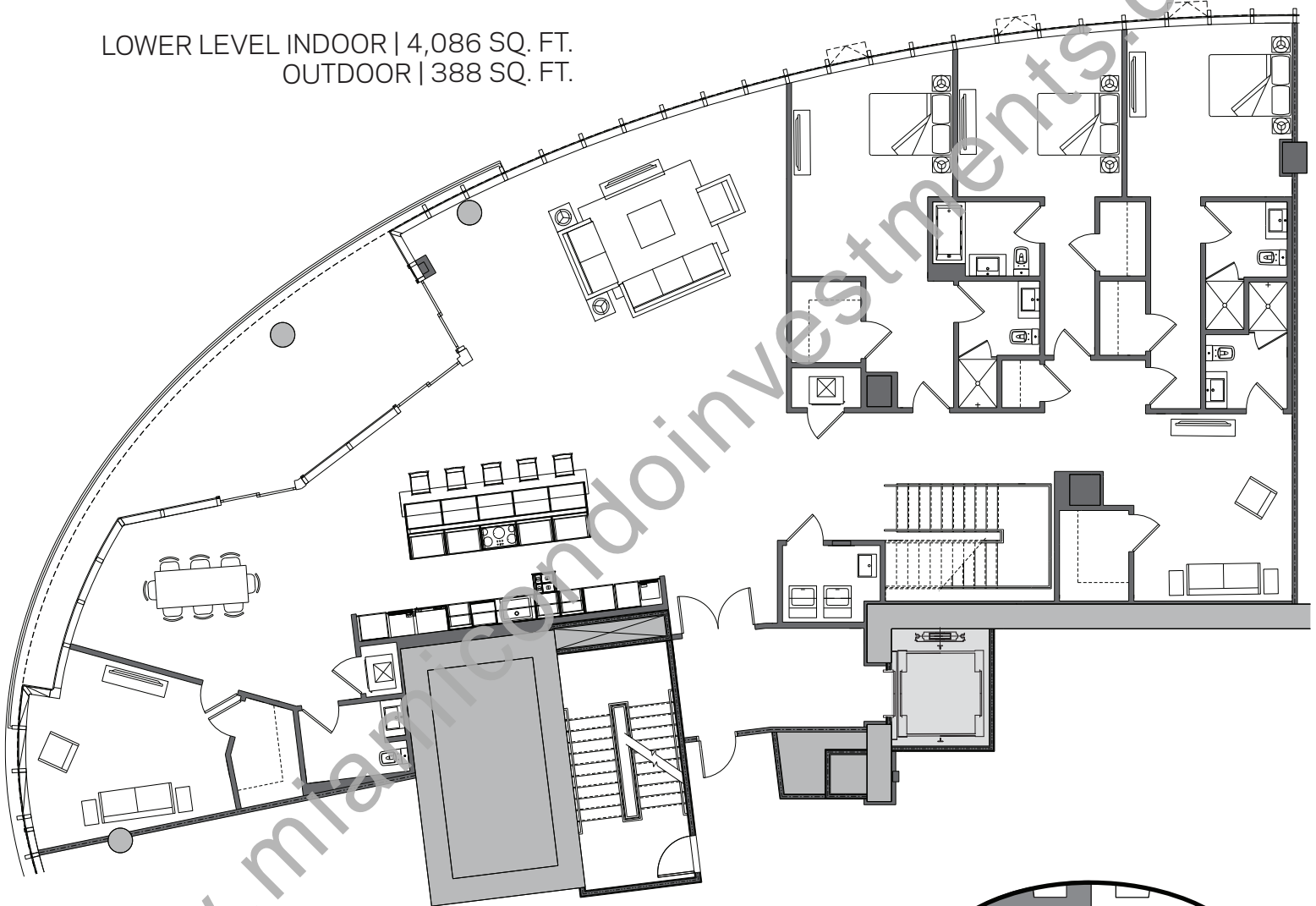



Residence L2 Duplex Lower Level

5 Bedroom + Den | 5.5 Bath

TOTAL:	7,086 sq. ft.	658 m ²
INDOOR:	6,513 sq. ft.	605 m ²
OUTDOOR:	573 sq. ft.	53 m ²

LOWER LEVEL INDOOR | 4,086 SQ. FT.
OUTDOOR | 388 SQ. FT.



 These drawings are conceptual only and are for the convenience of reference. They should not be relied upon as representations, express or implied, of the final detail of the residences. Units shown are examples of unit types and may not depict actual units. Stated square footages are ranges for a particular unit type and are measured to the exterior boundaries of the exterior walls and the centerline of interior demising walls and in fact vary from the area that would be determined by using the description and definition of the "Unit" set forth in the Declaration (which generally only includes the interior airspace between the perimeter walls and excludes interior structural components). Note that measurements of rooms set forth on this floor plan are generally taken at the greatest points of each given room (as if the room were a perfect rectangle), without regard for any cutouts. Accordingly, the area of the actual room will typically be smaller than the product obtained by multiplying the stated length times width. All dimensions are approximate and may vary with actual construction, and all floor plans and development plans are subject to change.