

MUSE

68 INSPIRATIONS

A CONCEPTUAL BOOK





MUSE

68 INSPIRATIONS

We invite you into our conceptual thinking as the final Muse evolves.
We are inspired always by new thoughts, images, materials and a new way of life.

THE FEATURES, PLANS AND SPECIFICATIONS DESCRIBED ABOVE ARE PROPOSED ONLY, AND THE DEVELOPER RESERVES THE RIGHT TO MODIFY, REVISE OR WITHDRAW ANY OR ALL OF SAME IN HIS SOLE DISCRETION AND WITHOUT FURTHER NOTICE. WITHOUT LIMITING THE GENERALITY OF THE FOREGOING, DEVELOPER RESERVES THE RIGHT TO SUBSTITUTE ANY OF THE FOREGOING WITH ITEMS OF SIMILAR OR BETTER VALUE, IN DEVELOPER'S OPINION. ARTIST CONCEPTUAL RENDERING.



*Inspiration is
an Elusive Element of
The Human Experience*



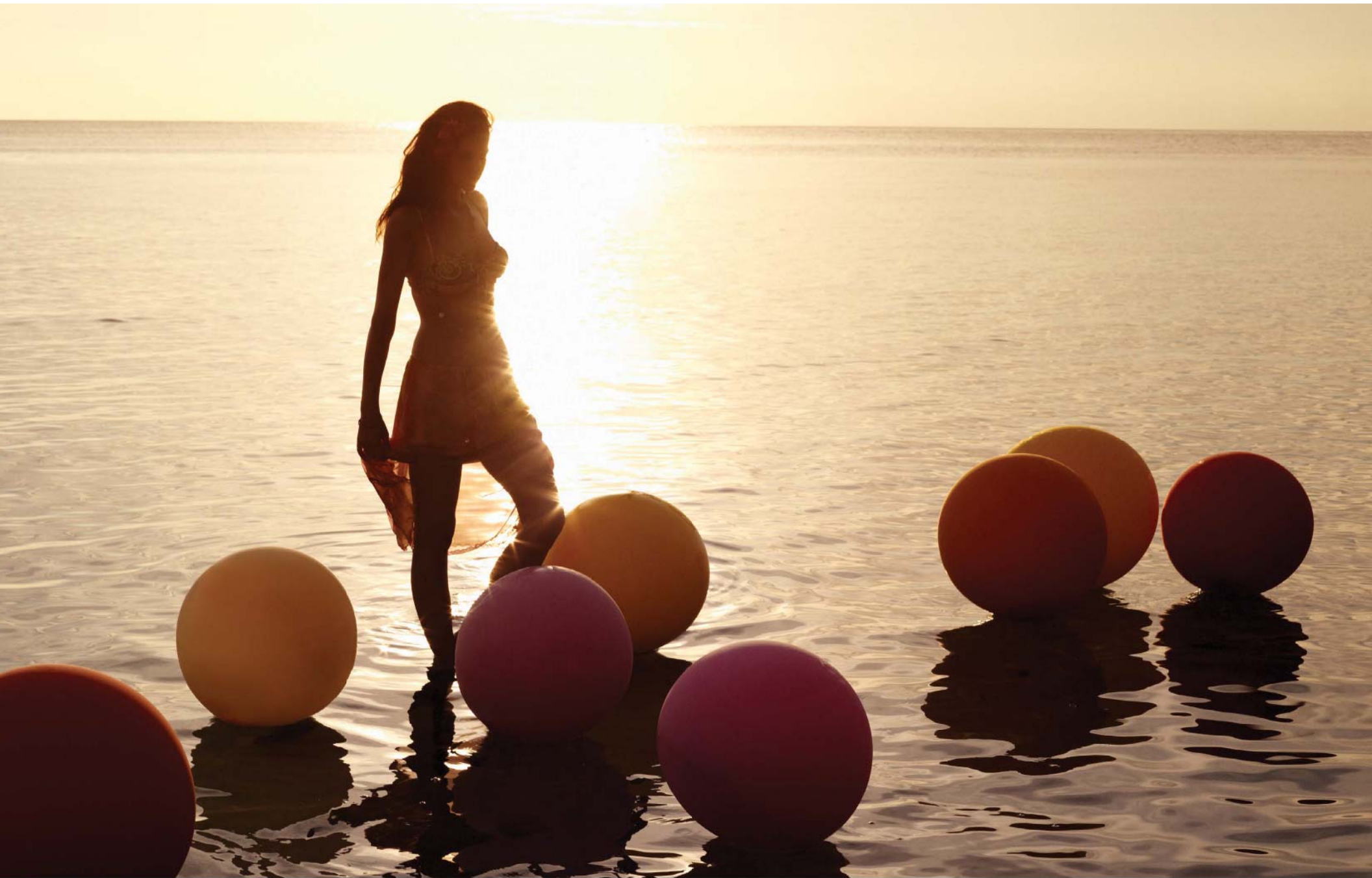
A JOURNEY OF
Discovery

Design and artistic mastery curate the experience awaiting you at Muse. Within each home, throughout every common space, and surrounding the private sands, lies a unique encounter. A fusion of art and unprecedented technology offers a lifestyle of modern elegance, set within the tranquil exclusivity of Sunny Isles.

ACTUAL VIEWS MAY VARY AND CANNOT BE GUARANTEED. VIEWS SHOWN CANNOT BE RELIED UPON AS THE ACTUAL VIEW FROM ANY PARTICULAR UNIT WITHIN THE CONDOMINIUM. ORAL REPRESENTATIONS CANNOT BE RELIED UPON AS CORRECTLY STATING REPRESENTATIONS OF THE DEVELOPER. FOR COMPLETE REPRESENTATIONS, MAKE REFERENCE TO THE BROCHURE AND TO THE DOCUMENTS REQUIRED BY SECTION 718.508, FLORIDA STATUTES, TO BE FURNISHED BY A DEVELOPER TO A BUYER OR LESSEE.

FIND YOUR

III USE





IDYLLIC *Theme*

Residence Features

With incredible panoramic ocean and intracoastal views, each residence is delivered fully finished with inspired designs by Troy Dean Interiors.

Private elevators service each residence. Interiors feature beautiful, eight-foot, Italian entry doors, exquisite marble and wood flooring, custom Italian cabinetry, and personalized art from Helidon Xhikha.

Expansive master bathrooms feature fabulous Dornbracht and Duravit plumbing fixtures, while the master bedroom boasts a midnight bar.

- » Delivered fully finished
- » 12' ceilings with floor-to-ceiling windows
- » 60' wide and up to 38' deep terraces
- » Outdoor living spaces complete with summer kitchens and weather-resistant entertainment systems
- » 8' tall Italian entry doors
- » 2 private elevators with biometrics technology + 1 service elevator
- » Advanced iHome technology
- » Custom Smart Tech 2.0
- » Exquisite marble and wood flooring throughout residences
- » Inspired interiors by Antrobus + Ramirez
- » Panoramic ocean and intracoastal views
- » Master bathrooms feature Dornbracht and Duravit fixtures
- » Custom concealed Italian cabinetry
- » Midnight Bar in Master Suite
- » Inspired designs by Troy Dean Interiors
- » Complimentary Interior Design Consultation

THE FEATURES, PLANS AND SPECIFICATIONS DESCRIBED ABOVE ARE PROPOSED ONLY, AND THE DEVELOPER RESERVES THE RIGHT TO MODIFY, REVEAL OR WITHDRAW ANY OR ALL OF SAME IN ITS SOLE DISCRETION WITHOUT NOTICE. WITHOUT LIMITING THE GENERALITY OF THE FOREGOING, DEVELOPER RESERVES THE RIGHT TO SUBSTITUTE ANY OF THE FOREGOING WITH ITEMS OF SIMILAR OR BETTER VALUE, IN DEVELOPER'S SOLE AND FINAL CONCEPTUAL JUDGMENT.



Interiors inspired by ANTROBUS + RAMÍREZ

THE FEATURES, PLANS AND SPECIFICATIONS DESCRIBED ABOVE ARE PROPOSED ONLY, AND THE DEVELOPER RESERVES THE RIGHT TO ACCEPT, REVISION OR WITHDRAW ANY OR ALL OF SAME IN THE SOLE DISCRETION AND WITHOUT NOTICE, WITHOUT LIMITING THE GENERALITY OF THE FOREGOING. DEVELOPER RESERVES THE RIGHT TO SUBSTITUTE ANY OF THE MATERIALS WITH OTHERS OF SIMILAR OR BETTER VALUE, IN DEVELOPER'S OPINION, ARTIST CONCEPTUAL RENDERING.

THE DEVELOPER DOES NOT MAKE ANY GUARANTEES. VIEWS SHOWN CANNOT BE HELD, UPON AS THE ACTUAL VIEW FROM ANY PHOTOGRAPHY TAKEN WITHIN THE CONDOMINIUM. ORAL REPRESENTATIONS BY SALES PERSONNEL OR ANY OTHER REPRESENTATIVE OF THE DEVELOPER, EVEN IF WRITTEN, SHALL BE SUBJECT TO THE DEVELOPER'S POLICY AND TO THE DEVELOPER'S STANDARD TERMS AND CONDITIONS. THIS FURNISHED BY A DEVELOPER TO A BUYER OR LESSEE.



Interiors inspired by ANTROBUS + RAMIREZ

THE FEATURES, PLANS AND SPECIFICATIONS DESCRIBED ABOVE ARE PROVIDED ONLY, AND THE DEVELOPER RESERVES THE RIGHT TO MODIFY, REVEAL OR WITHDRAW ANY OR ALL OF SAME IN ITS SOLE DISCRETION AND WITHOUT FURTHER NOTICE. WITHOUT LIMITING THE GENERALITY OF THE FOREGOING, DEVELOPER RESERVES THE RIGHT TO SUBSTITUTE ANY OF THE FOREGOING WITH ITEMS OF SIMILAR OR BETTER VALUE, IN DEVELOPER'S OPINION. ARTIST CONCEPTUAL RENDERING.

ACTUAL VIEWS MAY VARY AND CANNOT BE GUARANTEED. VIEWS SHOWN CANNOT BE RELIED UPON AS THE ACTUAL VIEW FROM ANY PARTICULAR UNIT WITHIN THE CONDOMINIUM. REPRESENTATIONS CANNOT BE RELIED UPON AS CORRECTLY STATING REPRESENTATIONS OF THE DEVELOPER. FOR CORRECT REPRESENTATIONS, MAKE REFERENCE TO THE BROCHURE AND TO THE COCCUMDAYS, REGULATED BY SECTION 718.508, FLORIDA STATUTES, TO BE FURNISHED BY A DEVELOPER TO A BUYER OR LESSEE.



ACTUAL VIEWS MAY VARY AND CANNOT BE GUARANTEED. VIEWS SHOWN CANNOT BE RELIED UPON AS THE ACTUAL VIEW FROM ANY PARTICULAR UNIT WITHIN THE CONDOMINIUM. ORAL REPRESENTATIONS CANNOT BE RELIED UPON AS CORRECTLY STATING REPRESENTATIONS OF THE DEVELOPER. FOR CORRECT REPRESENTATIONS, MAKE REFERENCE TO THIS BROCHURE AND TO THE DOCUMENTS REQUIRED BY SECTION 718.609, FLORIDA STATUTES, TO BE FURNISHED BY A DEVELOPER TO A BUYER OR LESSEE.



A VIVID *Scene*

Fully Finished Homes

Throughout each facet of Muse, a promise is kept; to redefine expectations and boundaries. With a drive to fulfill this promise, each home incorporates a customized choice of finishes.

Residences will be delivered fully finished, and equipped with all appliances and fixtures. Designs inspired by Troy Dean Interiors offer buyers a choice in exquisite flooring and countertop materials, paint selections, and lighting.

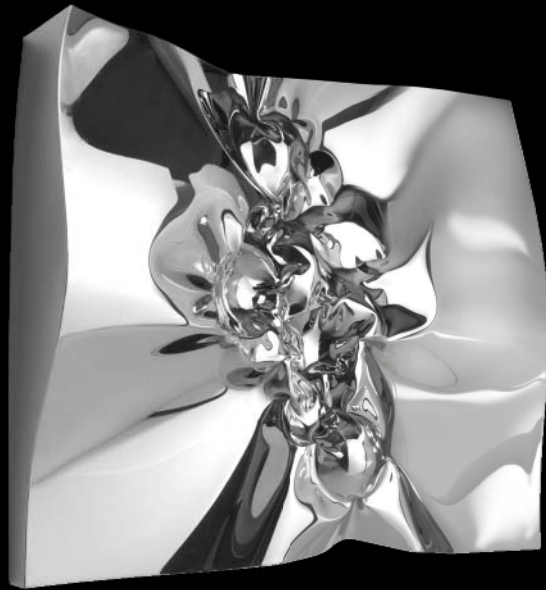
The four unique finishing packages include exotic marble and wide-plank engineered wood flooring options, a selection of striking stone countertops, as well as complimentary paint colors for each choice.

THE FEATURES, PLANS AND SPECIFICATIONS DESCRIBED ABOVE ARE PROVIDED ONLY, AND THE DEVELOPER RESERVES THE RIGHT TO MODIFY, REVESE OR WITHDRAW ANY OR ALL OF SAME IN ITS SOLE DISCRETION WITHOUT NOTICE. WITHOUT LIMITING THE GENERALITY OF THE FOREGOING, DEVELOPER RESERVES THE RIGHT TO SUBSTITUTE ANY OF THE FOREGOING WITH ITEMS OF SIMILAR OR BETTER VALUE, IN DEVELOPER'S SOLE AND APPOINT CONSTRUCTION. READING.



SELECT

HOME FINISHES



CUSTOM MADE ART PIECE
BY HELIDON XHIXHA

IN-HOME KITCHEN

INSPIRED SAMPLES FROM THE FOUR DISTINCT PALETTES



MARBLE ISLAND
CALACATTA ORO MACCHIA
VECCHIA



LOWER CABINETS
BRILLIANT WHITE



FLOOR-TO-CEILING CABINETS
WALNUT WOOD PANELING



WOOD FLOORING
LIGHT GREY WASHED WIDE PLANK



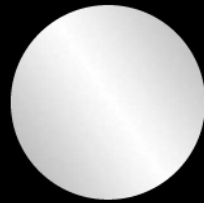
MARBLE FLOORING
CHANTILLY GREY HONED

THE FEATURES, PLANS AND SPECIFICATIONS DESCRIBED ABOVE ARE PROPOSED ONLY, AND THE DEVELOPER RESERVES THE RIGHT TO MODIFY, REVISE OR WITHDRAW ANY OR ALL OF SAME IN ITS SOLE DISCRETION AND WITHOUT PRIOR NOTICE. WITHOUT LIMITING THE GENERALITY OF THE FOREGOING, DEVELOPER RESERVES THE RIGHT TO SUBSTITUTE ANY OF THE FOREGOING WITH ITEMS OF SIMILAR OR BETTER VALUE, IN DEVELOPER'S OPINION. ARTIST CONCEPTUAL RENDERING.

MASTER BATHROOM

INSPIRED SAMPLES FROM THE FOUR DISTINCT PALETTES

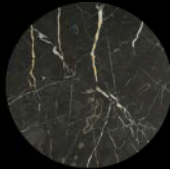
MARBLE FLOORING/VANITY
SILVER WAVE POLISHED



METAL ACCENT
POLISHED CHROME



METAL ACCENT
OIL RUBBED BRONZE



MARBLE FLOORING/VANITY
ST. LAURENT HONED



MARBLE FLOORING/VANITY
GREYWOOD HONED

MASTER CLOSET

INSPIRED SAMPLES FROM THE FOUR DISTINCT PALETTES



MARBLE FLOORING
CHANTILLY GREY HONED



WOOD FLOOR
SMOKED BLACK

CLOSET DOOR
LEATHER OR SUEDE OPTION



CLOSET DOOR
LEATHER OR SUEDE OPTION

CLOSET DOOR
LEATHER OR SUEDE OPTION



THE FEATURES, PLANS AND SPECIFICATIONS DESCRIBED ABOVE ARE PROPOSED ONLY, AND THE DEVELOPER RESERVES THE RIGHT TO MODIFY, REVISE OR WITHDRAW ANY OR ALL OF SAME IN ITS SOLE DISCRETION AND WITHOUT PRIOR NOTICE. WITHOUT LIMITING THE GENERALITY OF THE FOREGOING, DEVELOPER RESERVES THE RIGHT TO SUBSTITUTE ANY OF THE FOREGOING WITH ITEMS OF SIMILAR OR BETTER VALUE, IN DEVELOPER'S OPINION. ARTIST CONCEPTUAL RENDERING.



THE FEATURES, PLANS AND SPECIFICATIONS DESCRIBED ABOVE ARE PROPOSED ONLY, AND THE DEVELOPER RESERVES THE RIGHT TO MODIFY, REVISE OR WITHDRAW ANY OR ALL OF SAME IN ITS SOLE DISCRETION AND WITHOUT PRIOR NOTICE. WITHOUT LIMITING THE GENERALITY OF THE FOREGOING, THE DEVELOPER RESERVES THE RIGHT TO SUBSTITUTE ANY OF THE FOREGOING WITH ITEMS OF SIMILAR OR BETTER VALUE. IN DEVELOPER'S OPINION, ARTIST CONCEPTUAL RENDERING.

ACTUAL VIEWS MAY VARY AND SHOULD BE GUARANTEED. VIEWS SHOWN CANNOT BE RELIED UPON AS THE ACTUAL VIEW FROM ANY PARTICULAR UNIT WITHIN THE CONDOMINIUM. ORAL REPRESENTATIONS SHOULD BE WRITTEN AND SPECIFICALLY STATING REPRESENTATIONS OF THE DEVELOPER. FOR CORRECT REPRESENTATIONS, MAKE REFERENCE TO THIS BROCHURE AND TO THE DOCUMENTS REQUIRED BY APPLICABLE FLORIDA STATUTES, TO BE FURNISHED BY A DEVELOPER TO A BUYER OR LESSEE.



Blueprint of INGENUITY

World Class Architecture

In a first-time collaboration between the world-renowned designer, Carlos Ott, and the innovative architectural firm, Sieger Suarez, Muse is an unparalleled, visually stunning, boutique high rise. From its grand heights, the sleek lines cascade down to white sands below. Placed upon a pristine, exclusive oceanfront, Muse features an unmarred lower-level appearance with a parking garage folded into the building itself. With parking integrated into the tower's progressive design, residents enter directly into the lobby upon arrival. Lobby and common areas will be elegantly curated by Antrobus + Ramirez and rather than a pool atop a conventional parking podium, the tranquil

vanishing-edge pool sits glistening, overlooking the ocean, just steps outside the building's ground level. Two residences divide each floor, boasting eleven and twelve foot ceilings, and running the full sixty-foot width of the tower. Balconies at the same incredible width, offer expansive outdoor living with breathtaking ocean and intracoastal views.

THE FEATURES, PLANS AND SPECIFICATIONS DESCRIBED ABOVE ARE PROPOSED ONLY, AND THE DEVELOPER RESERVES THE RIGHT TO MODIFY, REVESE OR WITHDRAW ANY OR ALL OF SAME IN ITS SOLE DISCRETION WITHOUT FURTHER NOTICE. WITHOUT LIMITING THE GENERALITY OF THE FOREGOING, DEVELOPER RESERVES THE RIGHT TO SUBSTITUTE ANY OF THE FOREGOING WITH ITEMS OF SIMILAR OR BETTER VALUE, IN DEVELOPER'S SOLE AND APPOINT CONCEPTUAL RENDERING.

CARLOS OTT + sieger suarez



THE FEATURES, PLANS AND SPECIFICATIONS DESCRIBED ABOVE ARE PROPOSED ONLY AND ARE SUBJECT TO THE DEVELOPER'S SOLE DISCRETION AND WITHOUT FURTHER NOTICE, WITHOUT LIMITING THE GENERALITY OF THE FOREGOING, DEVELOPERS MAY WITHDRAW ANY OR ALL OF SAME IN ITS ENTIRETY OR IN PART AT ANY TIME WITHOUT LIABILITY TO THE BUYER. THE BUYER AGREES TO HOLD THE FOREGOING WITH ITEMS OF

12
Foot Height

60
Foot Width

14
Foot Depth

THE FEATURES, PLANS AND SPECIFICATIONS DESCRIBED ABOVE ARE PROPOSED ONLY, AND THE DEVELOPER RESERVES THE RIGHT TO MODIFY OR DISCONTINUE ANY PART OR ALL OF SAME IN ITS SOLE DISCRETION WITHOUT LIMITING THE GENERALITY OF THE FOREGOING. DEVELOPER RESERVES THE RIGHT TO REEVALUATE THE FOREGOING WITH THE PROGRESS OF DEVELOPMENT. ALL DETAILS TO BE DETERMINED AT DEVELOPER'S DISCRETION.

BRANDS AND LOGOS ARE TRADEMARKS OF THEIR RESPECTIVE OWNERS.



State of the Art PREEMINENCE

Revolutionary Smart-Home Features

Unparalleled technology brings futuristic elements of convenience to these smart homes. From climate and lighting to safety and security, a fully automated home, effortlessly customizable, leaves you with peace of mind and more time to enjoy your own slice of paradise.

Outside, the terrace boasts a high definition television and distributed speakers, specifically built for outdoor entertainment. With a fully equipped summer kitchen to complete the picture, experience indoor/outdoor living in the lap of luxury.

THE FEATURES, PLANS AND SPECIFICATIONS DESCRIBED ABOVE ARE PROPOSED ONLY, AND THE DEVELOPER RESERVES THE RIGHT TO MODIFY, REVESE OR WITHDRAW ANY OR ALL OF SAME IN ITS SOLE DISCRETION WITHOUT NOTICE. WITHOUT LIMITING THE GENERALITY OF THE FOREGOING, DEVELOPER RESERVES THE RIGHT TO SUBSTITUTE ANY OF THE FOREGOING WITH ITEMS OF SIMILAR OR BETTER VALUE, IN DEVELOPER'S SOLE AND FINAL CONCEPTUAL, READING.

GRACEFUL ELEMENTS

Technology and beauty go hand in hand as your favored soundtrack plays throughout each room. With the most technologically advanced speakers built into the walls, you'll never have to compromise function with elegance.

Interiors inspired by ANTROBUS + RAMIREZ

THE FEATURES, PLANS AND SPECIFICATIONS DESCRIBED ABOVE ARE PROPOSED ONLY, AND THE DEVELOPER RESERVES THE RIGHT TO MODIFY, REMOVE OR WITHDRAW ANY OR ALL OF SAME, IN HIS SOLE DISCRETION AND WITHOUT FURTHER NOTICE, WITHOUT LIMITING THE GENERALITY OF THE FOREGOING, DEVELOPER RESERVES THE RIGHT TO SUBSTITUTE ANY OF THE HARDWARE WITH ITEMS OF SIMILAR OR BETTER VALUE, IN DEVELOPER'S OPINION, ARTIST CONCEPTUAL RENDERING.

ACTUAL VIEWS MAY VARY AND ARE NOT GUARANTEED. VIEWS SHOWN CAN ONLY BE FELT, UPON AS, THE ACTUAL VIEW FROM ANY PARTICULAR UNIT WITHIN THE CONDOMINIUM. ONLY REPRESENTATIONS SHOWN IN THIS ADVERTISING MATERIALS ARE FOR INFORMATIONAL PURPOSES ONLY. THE DEVELOPER'S CONCEPT REPRESENTATIONS HAVE REFERENCE TO THE STRUCTURE AND TO THE DEVELOPER'S DESIGN INTENTIONS. VISUAL REPRESENTATIONS, THEIR FORM AND CONTENT, ARE DEVELOPED BY A DEVELOPER TO A BUYER OR LESSEE.



Pure FORM

The Kitchen Experience

The decadent kitchens are fit for a world-class chef, brimming with artistic design details and state-of-the-art appliances. The latest Sub-Zero and Wolf models, including expansive wine storage, are surrounded by endless marble countertops and exquisite, custom Italian cabinetry. At your whim, close the kitchen off from the rest of the residence with a concealed pocket door and dramatic sheet of counter-to-ceiling glass. When closed the glass becomes opaque revealing a striking stone and glass living-room wall.

THE FEATURES, PLANS AND SPECIFICATIONS DESCRIBED ABOVE ARE PROPOSED ONLY, AND THE DEVELOPER RESERVES THE RIGHT TO MODIFY, REVEE OR WITHDRAW ANY OR ALL OF SAME IN ITS SOLE DISCRETION AND WITHOUT PRIOR NOTICE. WITHOUT LIMITING THE GENERALITY OF THE FOREGOING, DEVELOPER RESERVES THE RIGHT TO SUBSTITUTE ANY OF THE FOREGOING WITH ITEMS OF SIMILAR OR BETTER VALUE, IN DEVELOPER'S OPINION. ARTIST CONCEPTUAL RENDERING.



THE FEATURES, PLANS, AND SPECIFICATIONS DESCRIBED ABOVE ARE PROPOSED ONLY, AND THE DEVELOPER RESERVES THE RIGHT TO MODIFY, REMOVE OR ADD TO ANY OF THEM IN HIS SOLE DISCRETION AND WITHOUT FURTHER NOTICE. BUYERS WILL ASSUME THE RESPONSIBILITY OF THE PROFESSIONAL DESIGNER RESPECTING THE DESIGN TO DISCLOSE ANY OF THE VARIATIONS, WITH REGARD TO, BUT NOT LIMITED TO, THE DEVELOPER'S OPINION, ARCHITECTURAL REQUIREMENTS.

SELECT

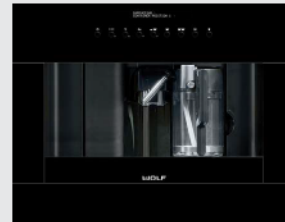
KITCHEN APPLIANCES



SUB-ZERO DUAL TEMPERATURE WINE STORAGE
For up to 132 bottles

A NEW GENERATION

INTRODUCING BLACK GLASS APPLIANCES
FROM SUBZERO + WOLF



30" WOLF COFFEE SYSTEM

Create perfectly brewed coffee, espresso, cappuccino, macchiato and latte at home.



30" WOLF CONVECTION STEAM OVEN

Take advantage of the most innovative steam oven on the market today. Virtually any dish prepared in a microwave, conventional oven, or range can also be prepared in the Wolf convection steam oven - with more control.



DUAL 30" WOLF CONVECTION OVENS

Convection Oven with porcelain blue interior



36" WOLF COOK TOP

Induction Stove



THE FEATURES, PLANS AND SPECIFICATIONS DESCRIBED ABOVE ARE PROPOSED ONLY, AND THE DEVELOPER RESERVES THE RIGHT TO MODIFY, REVISE OR WITHDRAW ANY OR ALL OF SAME IN ITS SOLE DISCRETION AND WITHOUT PRIOR NOTICE. WITHOUT LIMITING THE GENERALITY OF THE FOREGOING, DEVELOPER RESERVES THE RIGHT TO SUBSTITUTE ANY OF THE FOREGOING WITH ITEMS OF SIMILAR OR BETTER VALUE, IN DEVELOPER'S OPINION. ARTIST CONCEPTUAL RENDERING.



In Every DETAIL

The En suite

Marble covered bathrooms feature Donbracht and Duravit fixtures, oversized soakers and floor-to-ceiling windows, with countless other trimmings, all at the exceptional caliber found in every detail of Muse.

Vast built-out, walk-in closets in the master bedrooms feature custom designed closet doors with leather inserts, and pre-installed shelving and drawers. The lights go up as soon as the room is entered at any hour of the night and inspired designs by Troy Dean Interiors complete the grandeur of each Muse residence.

THE FEATURES, PLANS AND SPECIFICATIONS DESCRIBED ABOVE ARE PROPOSED ONLY, AND THE DEVELOPER RESERVES THE RIGHT TO MODIFY, REVESE OR WITHDRAW ANY OR ALL OF SAME IN ITS SOLE DISCRETION WITHOUT NOTICE. WITHOUT LIMITING THE GENERALITY OF THE FOREGOING, DEVELOPER RESERVES THE RIGHT TO SUBSTITUTE ANY OF THE FOREGOING WITH ITEMS OF SIMILAR OR BETTER VALUE, IN DEVELOPER'S SOLE AND FINAL CONCEPTUAL, READING.



ACTUAL VIEW MAY VARY. PHOTOGRAPHY BY JAMES HARRIS. STYLING BY JESSICA HARRIS. HAIR BY JESSICA HARRIS. MAKEUP BY JESSICA HARRIS. DRESS BY JESSICA HARRIS. SHIRT BY JESSICA HARRIS. TIE BY JESSICA HARRIS. SHOE BY JESSICA HARRIS. BAG BY JESSICA HARRIS. JEWELRY BY JESSICA HARRIS. HAIR BY JESSICA HARRIS. MAKEUP BY JESSICA HARRIS. DRESS BY JESSICA HARRIS. SHIRT BY JESSICA HARRIS. TIE BY JESSICA HARRIS. SHOE BY JESSICA HARRIS. BAG BY JESSICA HARRIS. JEWELRY BY JESSICA HARRIS.

ACTUAL VIEW MAY VARY. PHOTOGRAPHY BY JAMES HARRIS. STYLING BY JESSICA HARRIS. HAIR BY JESSICA HARRIS. MAKEUP BY JESSICA HARRIS. DRESS BY JESSICA HARRIS. SHIRT BY JESSICA HARRIS. TIE BY JESSICA HARRIS. SHOE BY JESSICA HARRIS. BAG BY JESSICA HARRIS. JEWELRY BY JESSICA HARRIS.

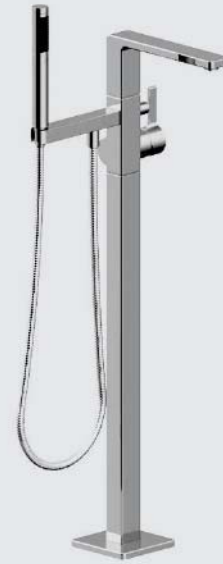
SELECT

MASTER BATH FIXTURES

DORNBRACHT
Hand Held on Slide Bar



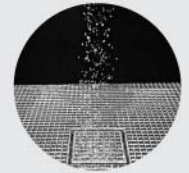
DORNBRACHT
Wall Elbow



DORNBRACHT
Floor Mount Tub Filler



DORNBRACHT
Lulu Wide-spread faucet



INFINITY DRAIN SYSTEM



DORNBRACHT
Body Sprays(Side Rain)



DORNBRACHT
Rain Head System



DORNBRACHT
Thermo Trim with One-way Control
Therm Valve

THE FEATURES, PLANS AND SPECIFICATIONS DESCRIBED ABOVE ARE PROPOSED ONLY, AND THE DEVELOPER RESERVES THE RIGHT TO MODIFY, REVISE OR WITHDRAW ANY OR ALL OF SAME IN ITS SOLE DISCRETION AND WITHOUT PRIOR NOTICE. WITHOUT LIMITING THE GENERALITY OF THE FOREGOING, DEVELOPER RESERVES THE RIGHT TO SUBSTITUTE ANY OF THE FOREGOING WITH ITEMS OF SIMILAR OR BETTER VALUE, IN DEVELOPER'S OPINION. ARTIST CONCEPTUAL RENDERING.



THE FEATURES, PLANS AND SPECIFICATIONS OF THE HERE SHOWN PROJECTS ARE PROPOSED ONLY, AND THE DEVELOPER RESERVES THE RIGHT TO MODIFY, REVERSE OR WITHDRAW ANY OR ALL OF SAME IN ITS SOLE DISCRETION AND WITHOUT FURTHER NOTICE, WITHOUT LIMITING THE GENERALITY OF THE FOREGOING, UNLESS AND PROVIDED THE RIGHT TO SUBSTITUTE ANY OF THE FOREGOING WITH ITEMS OF SIMILAR OR BETTER VALUE, IN DEVELOPER'S OPINION, WITHOUT CONCESSIONAL PROVISION.



A Mecca of INDULGENCE

Premier Amenities

Take in breathtaking views of the Atlantic Ocean over a leisurely brunch in the Breakfast Room, before strolling through the rotating art gallery, featuring the inspiration of Helidon Xhixha. The gallery opens directly into the serene infinity pool and spa. Beautifully curated living spaces designed by Antrobus + Ramirez will invite you stay and unwind. An exclusive beach club is open to residents only. Enjoy your own private paradise with world-class services at your fingertips. As a Muse resident, the elusive resort lifestyle comes to you.

- » Vanishing-edge pool and spa overlooking the Atlantic Ocean
- » State-of-the-art fitness center and spa
- » Resort-style poolside food and beverage services
- » Automated system provides ample parking
- » Private cooled storage space available
- » Breakfast gallery located on the mezzanine level, showcasing art and overlooking the Atlantic Ocean
- » Elegantly designed living areas by Antrobus + Ramirez

THE FEATURES, PLANS AND SPECIFICATIONS DESCRIBED ABOVE ARE PROPOSED ONLY, AND THE DEVELOPER RESERVES THE RIGHT TO MODIFY, REVEAL OR WITHDRAW ANY OR ALL OF SAME IN ITS SOLE DISCRETION WITHOUT NOTICE. WITHOUT LIMITING THE GENERALITY OF THE FOREGOING, DEVELOPER RESERVES THE RIGHT TO SUBSTITUTE ANY OF THE FOREGOING WITH ITEMS OF SIMILAR OR BETTER VALUE, IN DEVELOPER'S SOLE AND APART CONCEPTUAL RENDERING.





THE FEATURES, PLANS AND SPECIFICATIONS DESCRIBED ABOVE ARE PROPOSED ONLY, AND THE DEVELOPER RESERVES THE RIGHT TO MODIFY, REVISE OR WITHDRAW ANY OR ALL OF SAME IN HIS SOLE DISCRETION AND WITHOUT PRIOR NOTICE, WITHOUT LIMITING THE GENERALITY OF THE FOREGOING, DEVELOPER RESERVES THE RIGHT TO SUBSTITUTE ANY OF THE FOREGOING WITH ITEMS OF SIMILAR OR BETTER VALUE, IN DEVELOPER'S OPINION. ARTIST CONCEPTUAL RENDERING.

ACTUAL VIEWS MAY VARY AND CANNOT BE GUARANTEED. VIEWS SHOWN CANNOT BE RELIED UPON AS THE ACTUAL VIEW FROM ANY PARTICULAR UNIT WITHIN THE CONDOMINIUM. ONLY REPRESENTATIONS CANNOT BE RELIED UPON AS CORRECTLY STATING REPRESENTATIONS OF THE DEVELOPER. FOR PERFECT REPRESENTATIONS, MAKE REFERENCE TO THE EXHIBITS AND TO THE DOCUMENTS REQUIRED BY SECTION 718.608, FLORIDA STATUTES, TO BE FURNISHED BY A DEVELOPER TO A BUYER OR LESSEE.



THE PLANS, SPECS AND ARCHITECTURAL DESIGN ARE PRELIMINARY, AND THE DEVELOPER RESERVES THE RIGHT TO MODIFY, REVERSE OR WITHDRAW ANY OR ALL OF SAME IN ITS SOLE AND UNLIMITED DISCRETION, WITHOUT LIABILITY TO ANY PARTY. THE DEVELOPER RESERVES THE RIGHT TO SUBSTITUTE ANY OF THE FOREGOING WITH ITEMS OF EQUAL OR GREATER VALUE AND/OR QUALITY WITHOUT NOTICE.



THE FEATURES, PLANS AND SPECIFICATIONS DESCRIBED ABOVE ARE PROPOSED ONLY, AND THE DEVELOPER RESERVES THE RIGHT TO MODIFY, REVISE OR WITHDRAW ANY OR ALL OF SAME IN HIS SOLE DISCRETION AND WITHOUT FURTHER NOTICE. WITHOUT LIMITING THE GENERALITY OF THE FOREGOING, DEVELOPER RESERVES THE RIGHT TO SUBSTITUTE ANY OF THE FOREGOING WITH ITEMS OF SIMILAR OR BETTER VALUE, IN DEVELOPER'S OPINION, ARTIST CONCEPTUAL RENDERING.

Utopia

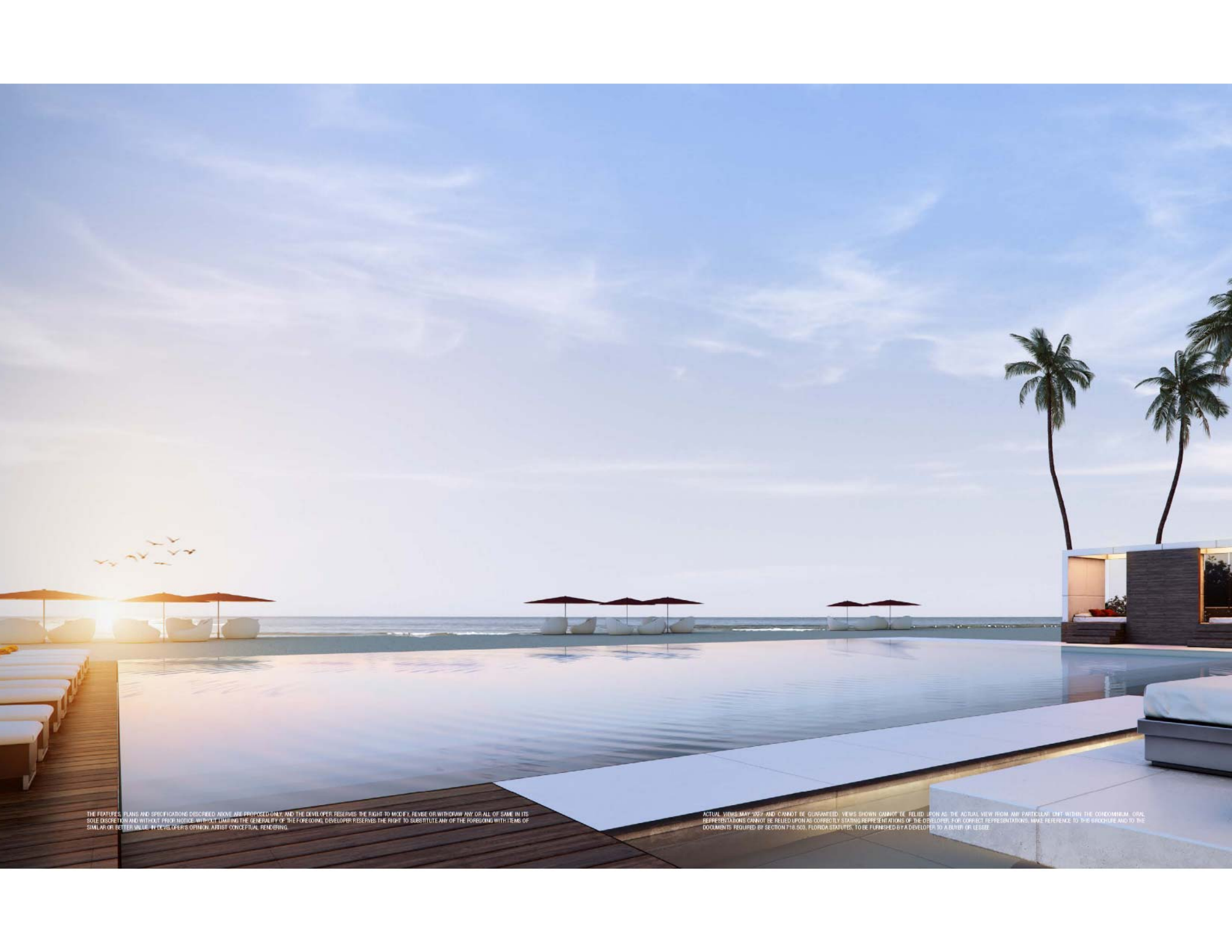


Private Service Beach Club

The exclusive beach club is yours and yours alone; a private escape in the sand. In the indulgence of the sea breeze, complete with chair, umbrella and towel service, relish your own slice of the Sunny Isles shoreline. Tucked between your Muse and the gentle waves, stake a claim to your oasis.

THE FEATURES, PLANS AND SPECIFICATIONS DESCRIBED ABOVE ARE PROPOSED ONLY, AND THE DEVELOPER RESERVES THE RIGHT TO MODIFY, REVEE OR WITHDRAW ANY OR ALL OF SAME IN ITS SOLE DISCRETION WITHOUT NOTICE. WITHOUT LIMITING THE GENERALITY OF THE FOREGOING, DEVELOPER RESERVES THE RIGHT TO SUBSTITUTE ANY OF THE FOREGOING WITH ITEMS OF SIMILAR OR BETTER VALUE, IN DEVELOPER'S SOLE AND ARTIST CONCEPTUAL RENDERING.





THE FEATURES, PLANS AND SPECIFICATIONS DESCRIBED ABOVE ARE PROPOSED ONLY, AND THE DEVELOPER RESERVES THE RIGHT TO MODIFY, REVISE OR WITHDRAW ANY OR ALL OF SAME IN ITS SOLE DISCRETION AND WITHOUT PRIOR NOTICE. WITHOUT LIMITING THE GENERALITY OF THE FOREGOING, DEVELOPER RESERVES THE RIGHT TO SUBSTITUTE ANY OF THE FOREGOING WITH ITEMS OF SIMILAR OR BETTER VALUE, IN DEVELOPER'S OPINION. ARTIST CONCEPTUAL RENDERING.

ACTUAL VIEWS MAY VARY AND CANNOT BE GUARANTEED. VIEWS SHOWN CANNOT BE RELIED UPON AS THE ACTUAL VIEW FROM ANY PARTICULAR UNIT WITHIN THE CONDOMINIUM. ORAL REPRESENTATIONS CANNOT BE RELIED UPON AS CORRECTLY STATING REPRESENTATIONS OF THE DEVELOPER. FOR CORRECT REPRESENTATIONS, MAKE REFERENCE TO THE BLUEPRINT AND TO THE DOCUMENTS PREPARED BY SECTION 718.508, FLORIDA STATUTES, TO BE FURNISHED BY A DEVELOPER TO A BUYER (OR LESSEE).



The Whitest GLOVES

Elite Services

Elite services are provided exclusively to residents from expert staff. Every need is met with personal concierge service, valet parking and complimentary pet walking service, to name only a few. Always rest assured with a professionally staffed, sophisticated security surveillance system.

THE FEATURES, PLANS AND SPECIFICATIONS DESCRIBED ABOVE ARE PROPOSED ONLY, AND THE DEVELOPER RESERVES THE RIGHT TO MODIFY, REVEE OR WITHDRAW ANY OR ALL OF SAME IN ITS SOLE DISCRETION AND WITHOUT PRIOR NOTICE. WITHOUT LIMITING THE GENERALITY OF THE FOREGOING, DEVELOPER RESERVES THE RIGHT TO SUBSTITUTE ANY OF THE FOREGOING WITH ITEMS OF SIMILAR OR BETTER VALUE, IN DEVELOPER'S OPINION. ARTIST CONCEPTUAL RENDERING.



THE FEATURES, PLANS AND SPECIFICATIONS DESCRIBED ABOVE ARE PROPOSED ONLY, AND THE DEVELOPER RESERVES THE RIGHT TO MODIFY, REVISE OR WITHDRAW ANY OR ALL OF SAME IN ITS SOLE DISCRETION AND WITHOUT PRIOR NOTICE. WITHOUT LIMITING THE GENERALITY OF THE FOREGOING, DEVELOPER RESERVES THE RIGHT TO SUBSTITUTE ANY OF THE FOREGOING WITH ITEMS OF SIMILAR OR BETTER VALUE, IN DEVELOPER'S OPINION. ARTIST CONCEPTUAL RENDERING.



THE FEATURES, PLANS AND SPECIFICATIONS DESCRIBED ABOVE ARE PROPOSED ONLY, AND THE DEVELOPER RESERVES THE RIGHT TO MODIFY, REVISE OR WITHDRAW ANY OR ALL OF SAME IN ITS SOLE DISCRETION AND WITHOUT PRIOR NOTICE, WITHOUT LIMITING THE GENERALITY OF THE FOREGOING, DEVELOPER RESERVES THE RIGHT TO SUBSTITUTE ANY OF THE FOREGOING WITH ITEMS OF SIMILAR OR BETTER VALUE, IN DEVELOPER'S OPINION. ARTIST CONCEPTUAL RENDERING.

ACTUAL VIEWS MAY VARY AND SHOULD BE CONSIDERED AS REPRESENTATIVE ONLY. THE DEVELOPER DOES NOT WARRANT ANY PART OF THIS UNIT WITHIN THE CONDOMINIUM OR ANY REPRESENTATIONS MADE BY THE DEVELOPER OR ANY OTHER PARTY. THE QUALITY OF THE CONSTRUCTION AND FINISHES MAY VARY FROM THE REPRESENTATIONS SHOWN IN THIS DOCUMENT. THE DEVELOPER'S OFFICE IS LOCATED AT 10000 BAYVIEW BLVD, SUITE 1000, BAYVIEW, FLORIDA 33154. THE DEVELOPER'S OFFICE IS LOCATED AT 10000 BAYVIEW BLVD, SUITE 1000, BAYVIEW, FLORIDA 33154.

A Vision DISTINCT

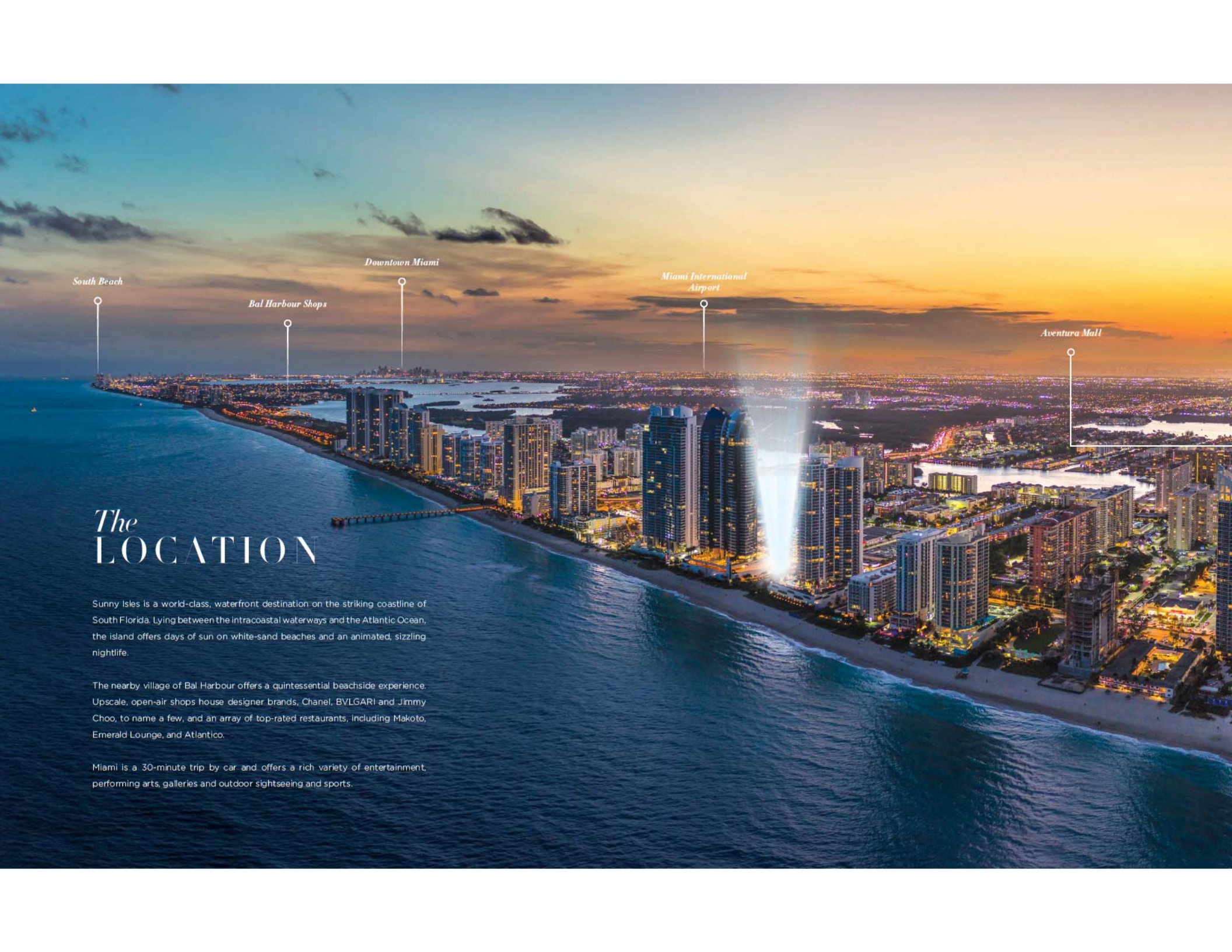
A Boutique Approach

Muse offers only sixty-eight residences, focusing on unparalleled amenities and services. All homes span the width of the building, with expansive balconies and stunning views.

Emphasizing a rare union of artistic inspiration, superlative home-technology features, and an exclusive oceanfront property, residents live concealed from rushes, lines or crowds. Exquisite interior designs by Antrobus + Ramirez provide an escape like no other. With a focus dedicated to the highest level of luxury, comfort, and service, Muse is a boutique oasis, reflecting the grace and style of the discerning few who call it home.

THE FEATURES, PLANS AND SPECIFICATIONS DESCRIBED ABOVE ARE PROPOSED ONLY, AND THE DEVELOPER RESERVES THE RIGHT TO MODIFY, REVESE OR WITHDRAW ANY OR ALL OF SAME IN ITS SOLE DISCRETION WITHOUT NOTICE. WITHOUT LIMITING THE GENERALITY OF THE FOREGOING, DEVELOPER RESERVES THE RIGHT TO SUBSTITUTE ANY OF THE FOREGOING WITH ITEMS OF SIMILAR OR BETTER VALUE, IN DEVELOPER'S SOLE AND ARTIST CONCEPTUAL RENDERING.





South Beach

Bal Harbour Shops

Downtown Miami

*Miami International
Airport*

Aventura Mall

The LOCATION

Sunny Isles is a world-class, waterfront destination on the striking coastline of South Florida. Lying between the intracoastal waterways and the Atlantic Ocean, the island offers days of sun on white-sand beaches and an animated, sizzling nightlife.

The nearby village of Bal Harbour offers a quintessential beachside experience. Upscale, open-air shops house designer brands, Chanel, BVLGARI and Jimmy Choo, to name a few, and an array of top-rated restaurants, including Makoto, Emerald Lounge, and Atlantico.

Miami is a 30-minute trip by car and offers a rich variety of entertainment, performing arts, galleries and outdoor sightseeing and sports.

The TEAM



PROPERTY
MARKETS GROUP
Developer

Muse is brought to you by a joint venture between Property Markets Group and S2 Development. Founded in 1991 by Kevin Maloney, Property Markets Group ("PMG") has direct hands-on experience in the acquisition, renovation, financing, operation, and marketing of commercial and residential real estate. A development firm of national scope, PMG has over 150 real estate transactions including over 80 residential buildings in Manhattan during its 20-year history. PMG has distinguished itself over the last decade for its development of new construction condominium developments in New York City, Miami, and Chicago.



S2 DEVELOPMENT, LLC
Developer

With almost two decades of condominium development experience and more than 600 luxury waterfront residences delivered in South Florida alone, S2 Development principals, J. Claudio Stivelman and Marc D. Schmulian have worked with many of the world's most notable architects and designers to produce spectacular landmark developments. With current luxury residential projects ranging from Bay Harbor Islands to Sunny Isles Beach, S2 maintains their reputation as leaders in luxury real estate development by building with a meticulous and detail oriented approach in South Florida's most desirable areas.



INTERNATIONAL
SALES GROUP, LLC
Exclusive Sales Team

International Sales Group (ISG), LLC is a fully integrated luxury real estate sales and marketing firm representing properties throughout South Florida and Latin America. With a portfolio that includes, Echo Brickell, Echo Aventura, Sage Beach, Casa Costa, Vizcayne, The Crimson, MEI, Apogee Beach, MyBrickell and more; ISG's team of top real estate professionals provides clients with the latest expertise in marketing, sales and administrative solutions.





ANTROBUS + RAMIREZ

Interior Designer - Building

ANTROBUS RAMIREZ is synonymous with unique interiors worldwide that blend bold details and unexpected materials into memorable experiences. With a whimsical perspective, each project delivers innovation and surprise, expression and warmth. ANTROBUS + RAMIREZ brings this distinct inspiration of design as they create the legacy of Muse. Unforgettable... Unparalleled...

ANTROBUS + RAMIREZ



CARLOS OTT

Conceptual Design

With more than 40 years of unparalleled design and architectural experience, Carlos Ott has been hailed as one of the best conceptual minds of his generation. A recipient of a Fulbright scholarship and a winner of numerous competitions as well as architectural prizes, Ott is a prodigy. Globally recognized, his signature designs can be found throughout France, Germany, China, Singapore, Dubai and more.

CARLOS OTT

TROY DEAN INTERIORS

Interior Designer - Residences

Troy Dean Interiors, a division of comprehensive design/construction firm Trend Design + Build, is an internationally recognized interior design firm specializing in luxurious, high-end interiors and custom architectural details. Troy Dean Interiors' strength lies in the unwavering team of professionals, who create, execute and immerse themselves in every design element. With artists and the craftsmen working side-by-side to ensure the highest quality control, the firm follows through with each facet of a design, from inception on a page to its perfect implementation. Troy Dean Interiors is the only interior design firm in the market with an in-house general contracting and millwork division, allowing it to have greater control over the end result and ensuring each project is seamlessly executed. Troy Dean Interiors incorporates the finest methods and materials the industry has to offer, as well as the latest technologies to create world-class designs.

Troy Dean
INTERIORS



SIEGER SUAREZ

Architectural Partnership

Sieger Suarez Architects is a distinguished leader of luxury high-rise residential design and development. Premier front-runners in the Southeastern United States, Sieger Suarez have been producing buildings of prominence and a legacy of excellence for four decades.

Owned and managed by Charles M. Sieger and Jose J. Suarez, the firm has received a multitude of awards and community recognition for its outstanding work. A key expansion included William A. Eoger, of EGSZ Corporation, established a landscape architectural division, furthering the firm's status as one of the most comprehensive in the Southeast.

With masterpieces which range among the most prestigious residential buildings in South Florida, innovative design along with the use of groundbreaking technology have set Sieger Suarez apart, and raised expectations within luxury residential development.

sieger suarez





ALL REPRESENTATIONS CANNOT BE RELIED UPON AS CORRECTLY STATING REPRESENTATIONS OF THE DEVELOPER, FOR CORRECT REPRESENTATIONS, MAKE REFERENCE TO THE BROCHURE AND TO THE DOCUMENTS PROVIDED BY SECTION THREE, FLOOR PLANS, DRAWINGS TO BE FURNISHED BY A DEVELOPER TO A BUYER OR LESSEE, OR TO THE PROPERTY REPORT REQUIRED BY FEDERAL LAW AND HEREIN BEFORE SIGNING ANY FINAL, NO FEDERAL AGENCY HAS ADDED THE MERITS OR VALUE, OR ANY OF THE PROPERTY THE OFFERING IS MADE ONLY BY THE PROSPECTUS FOR THE CONDOMINIUM AND NO STATEMENT SHOULD BE RELIED UPON IF NOT MADE BY THE PROSPECTUS, THIS IS NOT AN OFFER TO SELL, OR SOLICITATION OF OFFERS TO BUY, THE CONDOMINIUM UNITS IN STATES WHERE EACH OFFER OR SOLICITATION CANNOT BE MADE, THESE DRAWINGS ARE CONCEPTUAL ONLY AND ARE FOR THE CONFORMANCE OF REFERENCE, THEY SHOULD NOT BE RELIED UPON AS REPRESENTATIONS, EXPRESS OR IMPLIED, OF THE FINAL DETAIL OF THE RESIDENTIAL UNITS SHOWN ARE EXAMPLES OF UNIT TYPES AND MAY NOT REFLECT ACTUAL UNITS, STATED SQUARE FOOTAGES ARE INTENDED FOR A PARTICULAR UNIT TYPE AND ARE MEASURED TO THE EXTERIOR FINISHES OF THE EXTERIOR WALLS AND THE CENTERLINE OF INTERIOR SCREENED WALLS AND IN FACT MAY VARY FROM THE AREA THAT WOULD BE DETERMINED BY USING THE DESCRIPTION AND DIMENSIONS OF THE UNIT SET FORTH IN THE DECLARATION OF CONDOMINIUM (WHICH GENERALLY ONLY INCLUDES THE INTERIOR SPACING BETWEEN THE PERIMETER WALLS AND EXCLUDES INTERIOR STRUCTURAL COMPONENTS, ALL SPECIFICATIONS OF APPLIANCES, FURNITURE, FIXTURES, EQUIPMENT, COUNTERTOPS, SINKS, FLOOR COVERINGS AND OTHER MATTERS OF DETAIL, ARE CONCEPTUAL ONLY AND ARE NOT NECESSARILY INCLUDED IN EACH UNIT, CONSULT YOUR AGREEMENT AND THE PROSPECTUS FOR THE ITEMS INCLUDED WITH THE UNIT, DIMENSIONS AND SQUARE FOOTAGE ARE APPROXIMATE, WILL VARY WITH SPECIFIC UNIT TYPE, AND MAY VARY WITH ACTUAL CONSTRUCTION, ACCIDENTAL MEASUREMENTS OF ROOMS SET FORTH ON ANY FLOOR PLAN ARE NOMINAL, AND SHOULD BE TAKEN AT THE HIGHEST POINTS OF EACH CORNER FROM THE ROOM WHERE A PROJECT RECTANGLE, WITHOUT REGARD FOR ANY CUTOUTS, LINE ORIENTATION AND DIMENSIONS, INCLUDING NUMBER, SIZE, ORIENTATION AND FINISHES, BALCONY/LANDSCAPING, INCLUDING COMBINATIONS, SIZE AND FINISHES, STRUCTURE AND MECHANICAL CHANGES MAY VARY, THE DEVELOPER EXPRESSLY RESERVES THE RIGHT TO MAKE MODIFICATIONS, REVISIONS, AND CHANGES TO DRAWINGS AT ITS SOLE AND ABSOLUTE DISCRETION AND WITHOUT NOTICE, ALL DRAWINGS ARE CONCEPTUAL, DIMENSIONS AND THE DEVELOPER EXPRESSLY RESERVES THE RIGHT TO MAKE MODIFICATIONS, ACTUAL UNITS MAY VARY AND CANNOT BE GUARANTEED, VIEWS SHOWN CANNOT BE RELIED UPON AS THE ACTUAL VIEW FROM ANY PARTICULAR UNIT WITHIN THE CONDOMINIUM, IMPROVEMENTS, LANDSCAPING AND ARCHITECTURE DEPICTED MAY NOT EXIST, PHOTOGRAPHS MAY BE STOCK PHOTOGRAPHY USED TO REPRESENT UNITS, UNLESS NOTED OTHERWISE, ANY PHOTOGRAPHS, PLANS, AND MECHANICAL, ELECTRICAL, PLUMBING AND SPECIFICATIONS ARE SUBJECT TO CHANGE WITHOUT NOTICE, THE INFORMATION PRESENTED HEREIN IS CONCEPTUAL, THE BRANDS AND FEATURES CONTAINED HEREIN ARE NOT TO BE RELIED UPON OR USED AS A REFERENCE FOR SPECIFICATIONS.