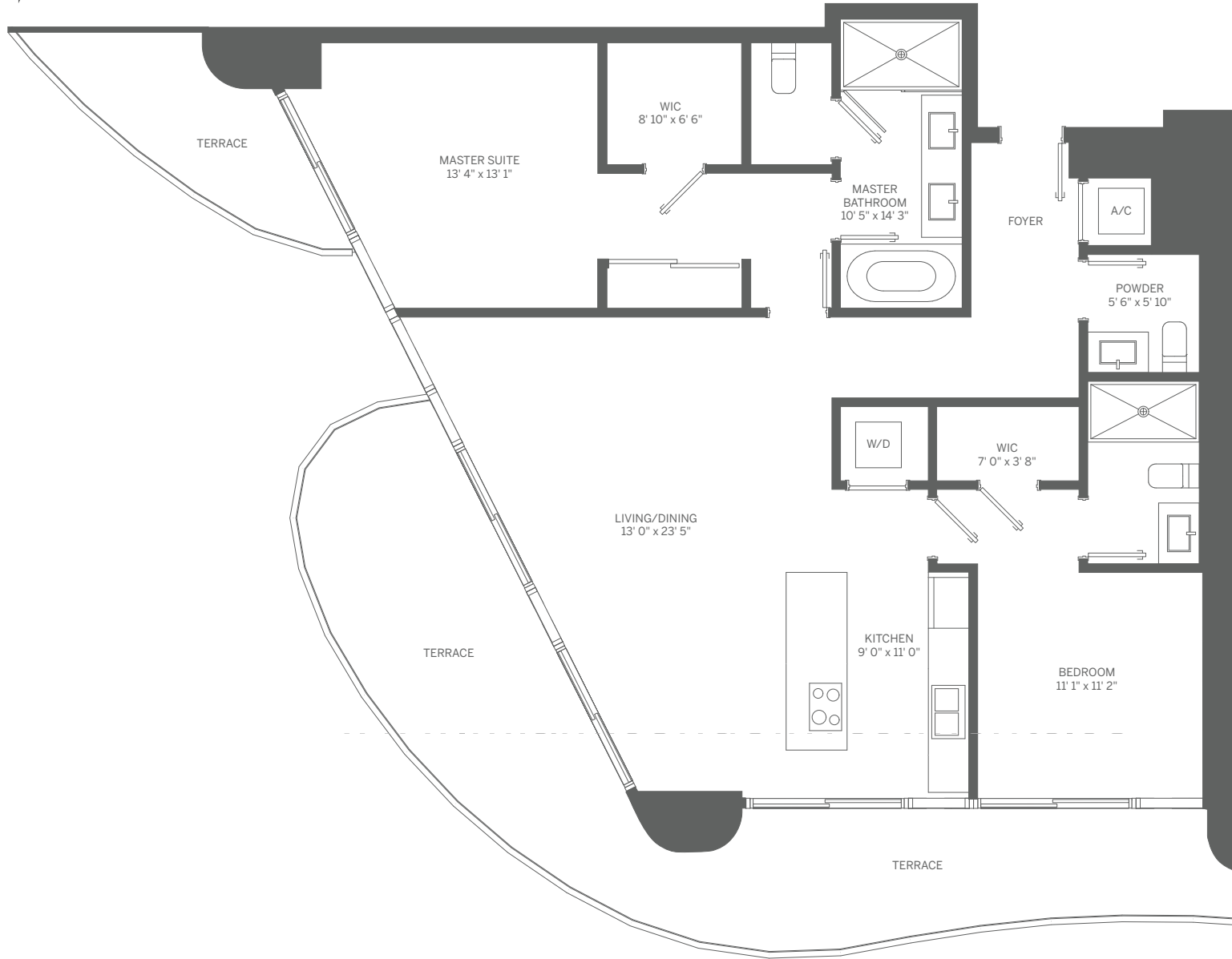
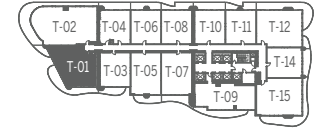
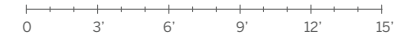


N

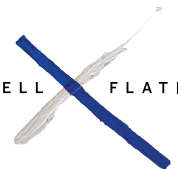


## TOWER UNIT 01 2 BEDROOM / 2.5 BATH

INTERIOR: 1,397 SF / 130 m<sup>2</sup> TERRACE: 468 SF / 43 m<sup>2</sup> TOTAL: 1,865 SF / 173 m<sup>2</sup>

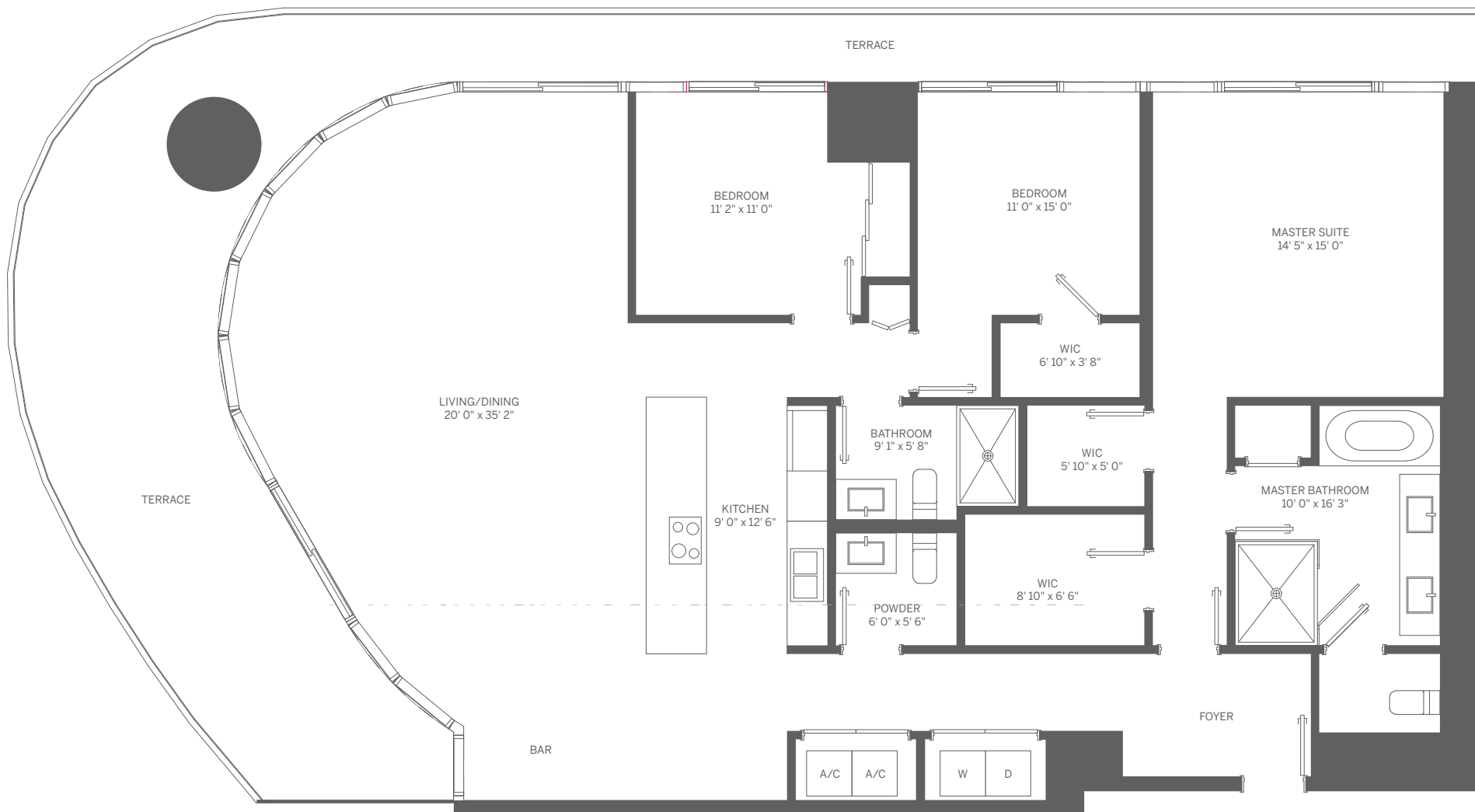
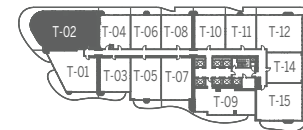


BRICKELL FLATIRON



Stated dimensions are measured to the exterior boundaries of the exterior walls and the centerline of interior demising walls and in fact vary from the dimensions that would be determined by using the description and definition of the "Unit" set forth in the Declaration (which generally only includes the interior airspace between the perimeter walls and excludes interior structural components). For your reference, the area of the Unit, determined in accordance with those defined unit boundaries, is 1,397 SF. Note that measurements of rooms set forth on this floor plan are generally taken at the greatest points of each given room (as if the room were a perfect rectangle), without regard for any cutouts. Accordingly, the area of the actual room will typically be smaller than the product obtained by multiplying the stated length times width. All dimensions are approximate and may vary with actual construction, and all floor plans and development plans are subject to change.

N

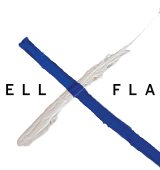


## TOWER UNIT 02 3 BEDROOM / 2.5 BATH

INTERIOR: 2,035 SF / 189 m<sup>2</sup> TERRACE: 634 SF / 59 m<sup>2</sup> TOTAL: 2,669 SF / 248 m<sup>2</sup>

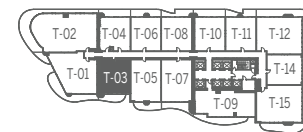
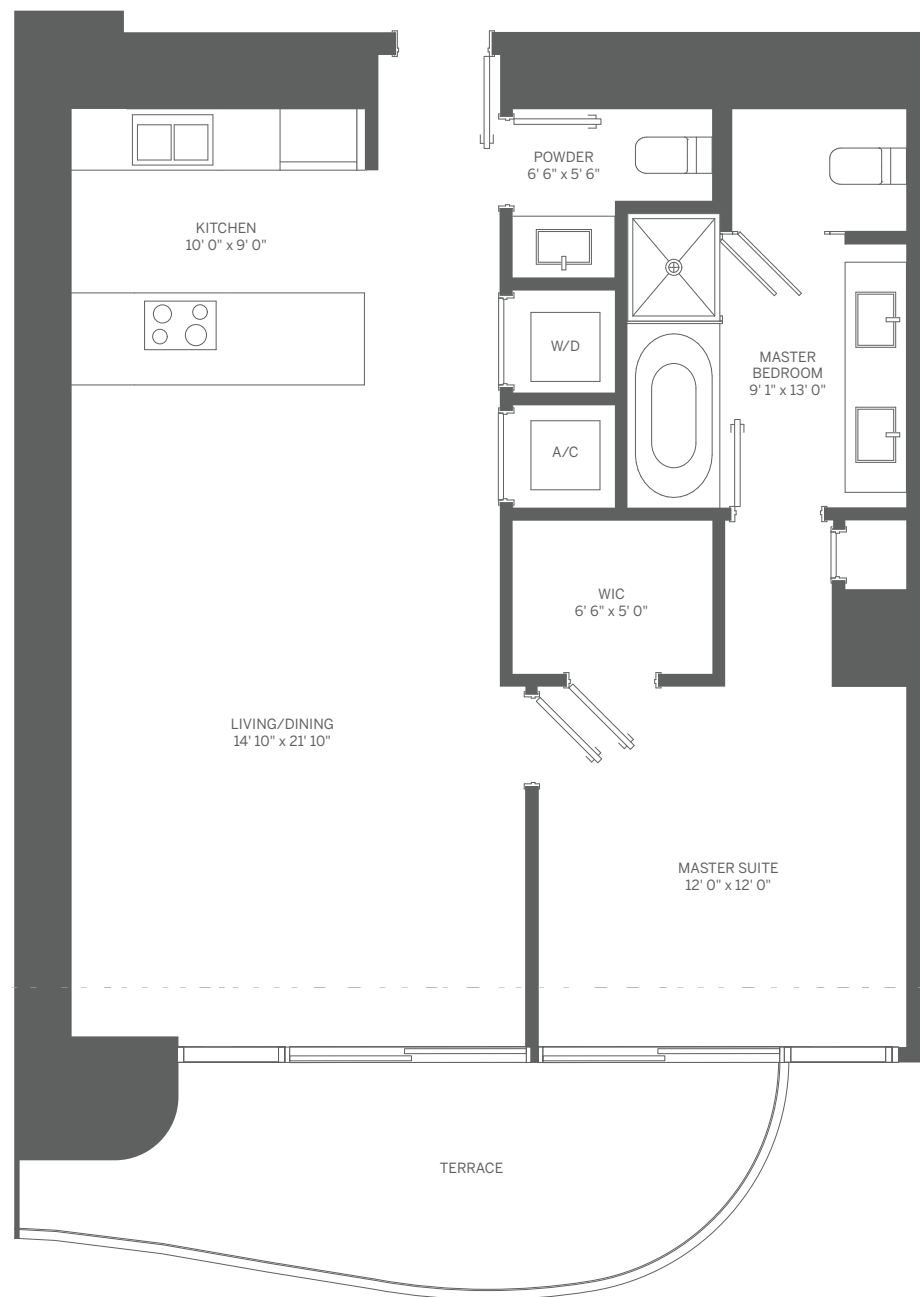


BRICKELL FLATIRON



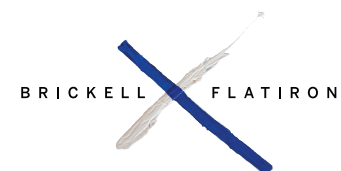
Stated dimensions are measured to the exterior boundaries of the exterior walls and the centerline of interior demising walls and in fact vary from the dimensions that would be determined by using the description and definition of the "Unit" set forth in the Declaration (which generally only includes the interior airspace between the perimeter walls and excludes interior structural components). For your reference, the area of the Unit, determined in accordance with those defined unit boundaries, is 2,035 SF. Note that measurements of rooms set forth on this floor plan are generally taken at the greatest points of each given room (as if the room were a perfect rectangle), without regard for any cutouts. Accordingly, the area of the actual room will typically be smaller than the product obtained by multiplying the stated length times width. All dimensions are approximate and may vary with actual construction, and all floor plans and development plans are subject to change.

N



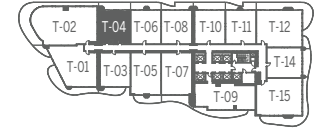
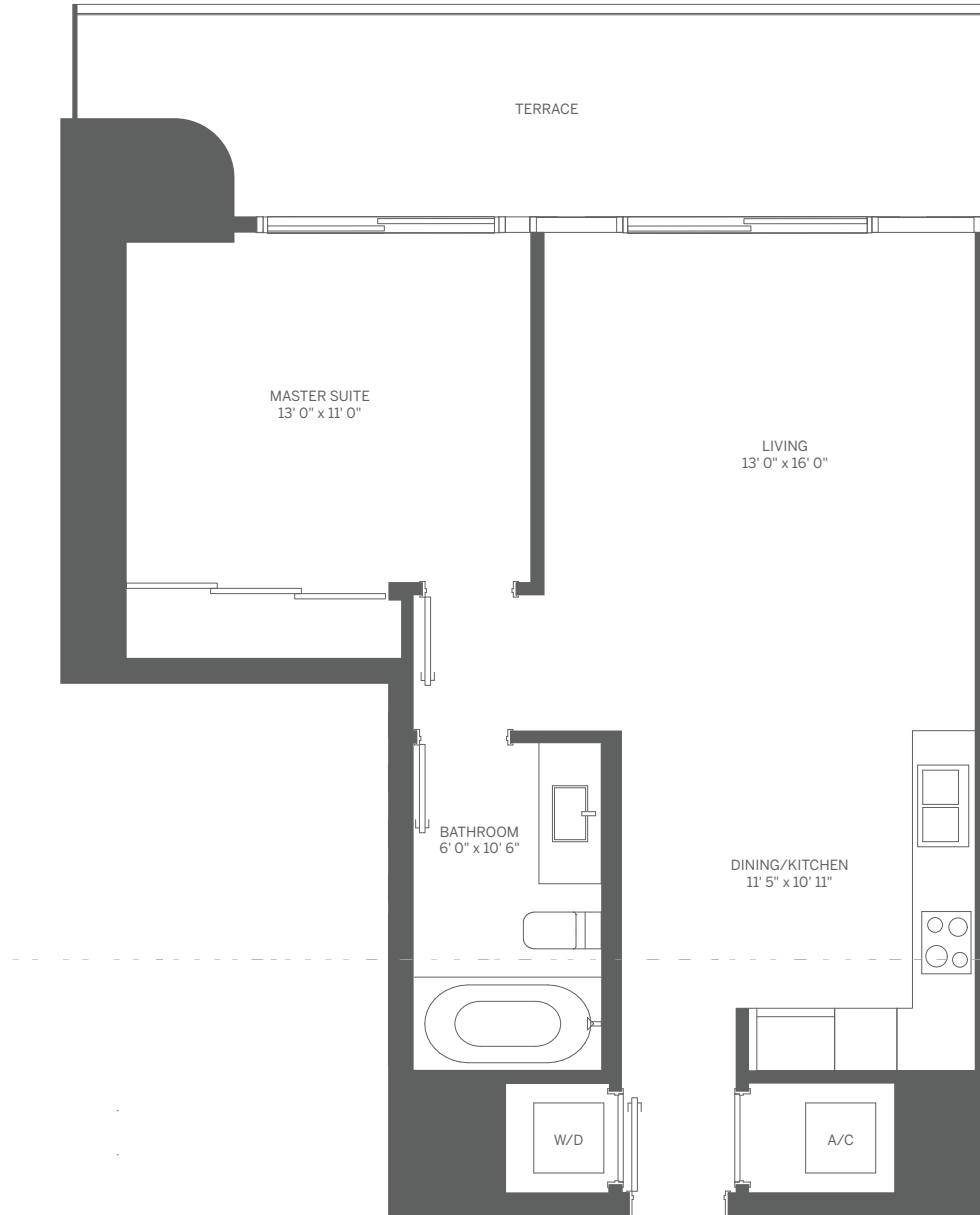
## TOWER UNIT 03 1 BEDROOM / 1.5 BATH

INTERIOR: 903 SF / 84 m<sup>2</sup> TERRACE: 157 SF / 15 m<sup>2</sup> TOTAL: 1,060 SF / 99 m<sup>2</sup>



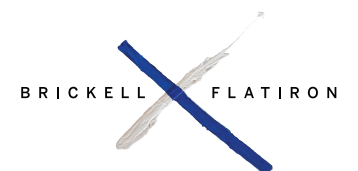
Stated dimensions are measured to the exterior boundaries of the exterior walls and the centerline of interior demising walls and in fact vary from the dimensions that would be determined by using the description and definition of the "Unit" set forth in the Declaration (which generally only includes the interior airspace between the perimeter walls and excludes interior structural components). For your reference, the area of the Unit, determined in accordance with those defined unit boundaries, is 903 SF. Note that measurements of rooms set forth on this floor plan are generally taken at the greatest points of each given room (as if the room were a perfect rectangle), without regard for any cutouts. Accordingly, the area of the actual room will typically be smaller than the product obtained by multiplying the stated length times width. All dimensions are approximate and may vary with actual construction, and all floor plans and development plans are subject to change.

N



## TOWER UNIT 04 1 BEDROOM / 1 BATH

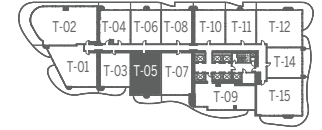
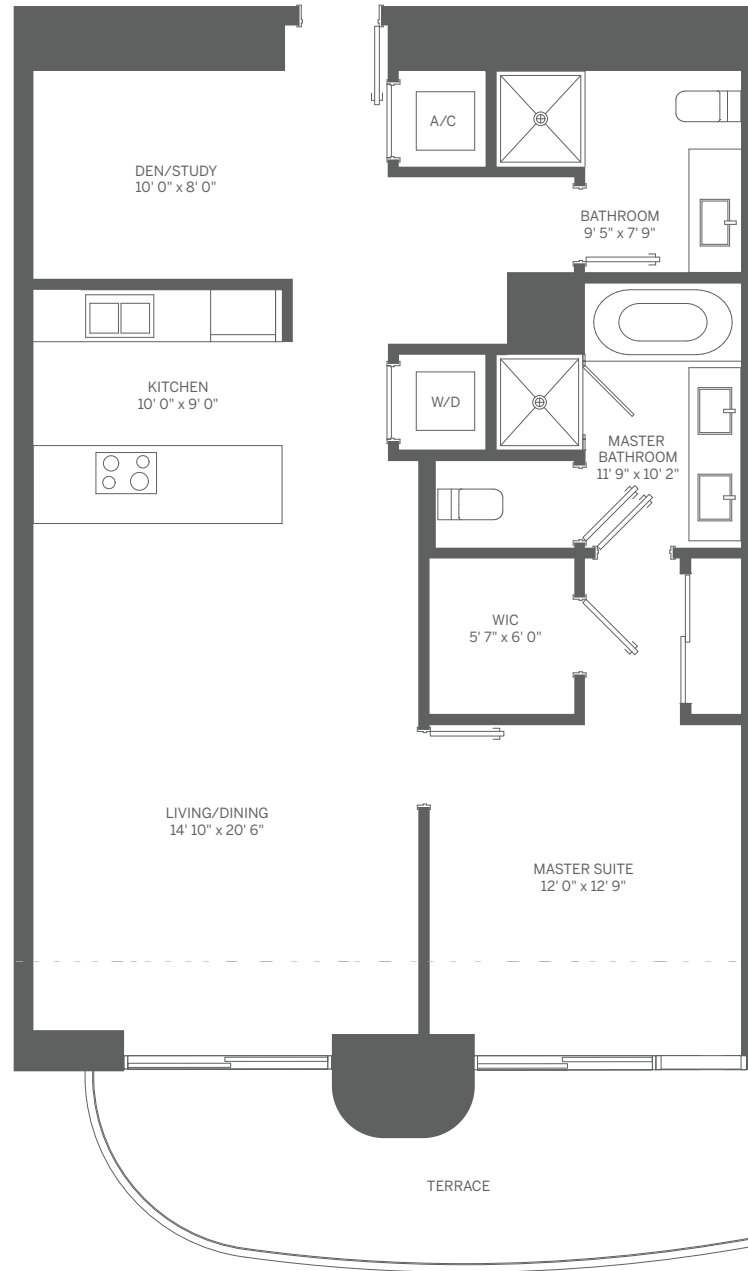
INTERIOR: 730 SF / 68 m<sup>2</sup> TERRACE: 178 SF / 17 m<sup>2</sup> TOTAL: 908 SF / 85 m<sup>2</sup>



Stated dimensions are measured to the exterior boundaries of the exterior walls and the centerline of interior demising walls and in fact vary from the dimensions that would be determined by using the description and definition of the "Unit" set forth in the Declaration (which generally only includes the interior airspace between the perimeter walls and excludes interior structural components). For your reference, the area of the Unit, determined in accordance with those defined unit boundaries, is 730 SF. Note that measurements of rooms set forth on this floor plan are generally taken at the greatest points of each given room (as if the room were a perfect rectangle), without regard for any cutouts. Accordingly, the area of the actual room will typically be smaller than the product obtained by multiplying the stated length times width. All dimensions are approximate and may vary with actual construction, and all floor plans and development plans are subject to change.

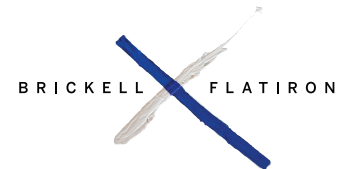


N



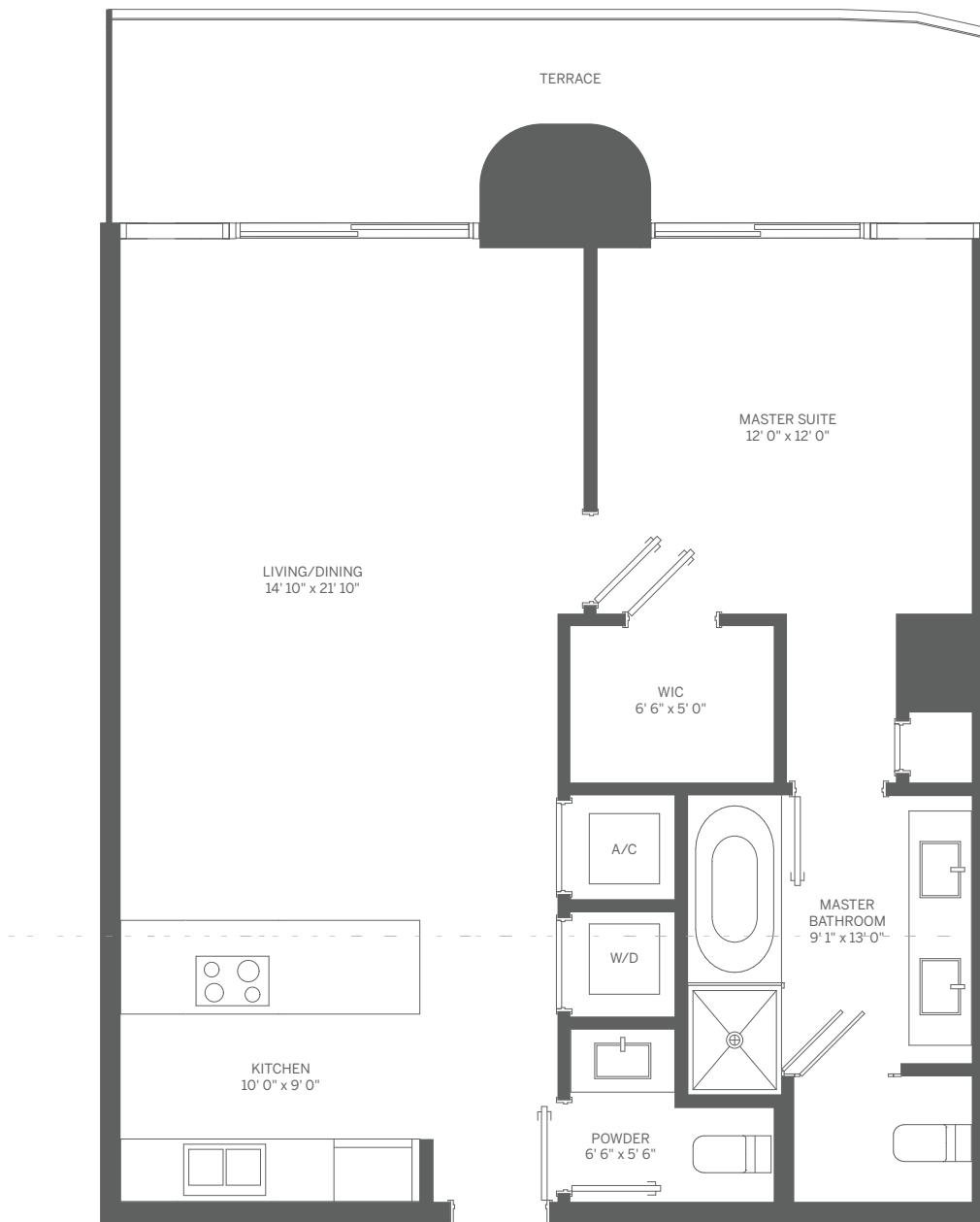
## TOWER UNIT 05 1 BEDROOM + DEN / 2 BATH

INTERIOR: 1,102 SF / 102 m<sup>2</sup> TERRACE: 163 SF / 15 m<sup>2</sup> TOTAL: 1,265 SF / 117 m<sup>2</sup>



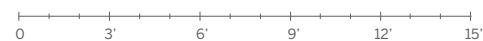
Stated dimensions are measured to the exterior boundaries of the exterior walls and the centerline of interior demising walls and in fact vary from the dimensions that would be determined by using the description and definition of the "Unit" set forth in the Declaration (which generally only includes the interior airspace between the perimeter walls and excludes interior structural components). For your reference, the area of the Unit, determined in accordance with those defined unit boundaries, is 1,102 SF. Note that measurements of rooms set forth on this floor plan are generally taken at the greatest points of each given room (as if the room were a perfect rectangle), without regard for any cutouts. Accordingly, the area of the actual room will typically be smaller than the product obtained by multiplying the stated length times width. All dimensions are approximate and may vary with actual construction, and all floor plans and development plans are subject to change.

N

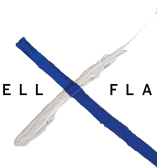


## TOWER UNIT 06 1 BEDROOM / 1.5 BATH

INTERIOR: 898 SF / 83 m<sup>2</sup> TERRACE: 168 SF / 16 m<sup>2</sup> TOTAL: 1,066 SF / 99 m<sup>2</sup>

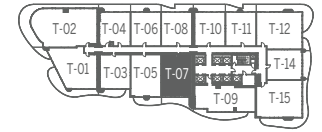
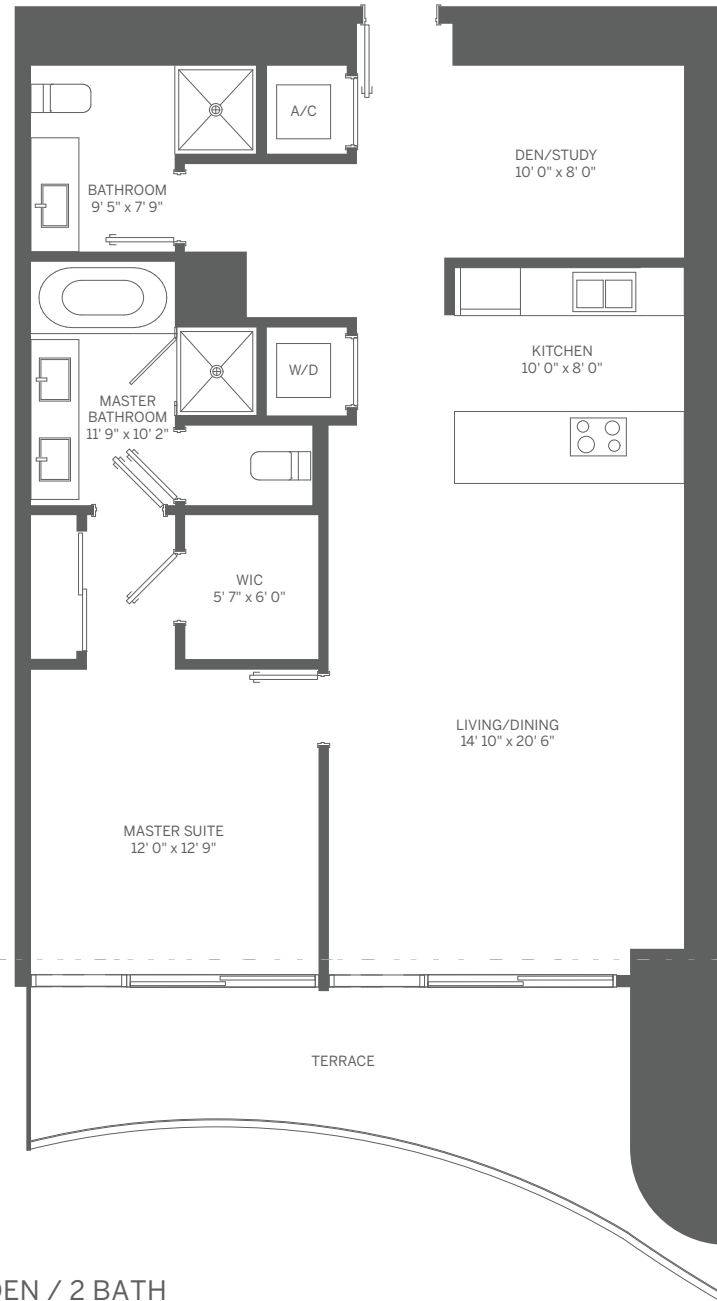


BRICKELL FLATIRON



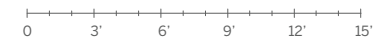
Stated dimensions are measured to the exterior boundaries of the exterior walls and the centerline of interior demising walls and in fact vary from the dimensions that would be determined by using the description and definition of the "Unit" set forth in the Declaration (which generally only includes the interior airspace between the perimeter walls and excludes interior structural components). For your reference, the area of the Unit, determined in accordance with those defined unit boundaries, is 898 SF. Note that measurements of rooms set forth on this floor plan are generally taken at the greatest points of each given room (as if the room were a perfect rectangle), without regard for any cutouts. Accordingly, the area of the actual room will typically be smaller than the product obtained by multiplying the stated length times width. All dimensions are approximate and may vary with actual construction, and all floor plans and development plans are subject to change.

N

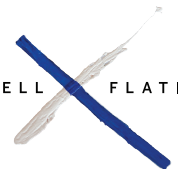


## TOWER UNIT 07 1 BEDROOM + DEN / 2 BATH

INTERIOR: 1,110 SF / 103 m<sup>2</sup> TERRACE: 171 SF / 16 m<sup>2</sup> TOTAL: 1,281 SF / 119 m<sup>2</sup>

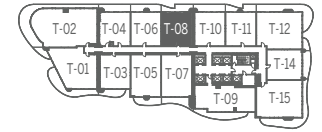
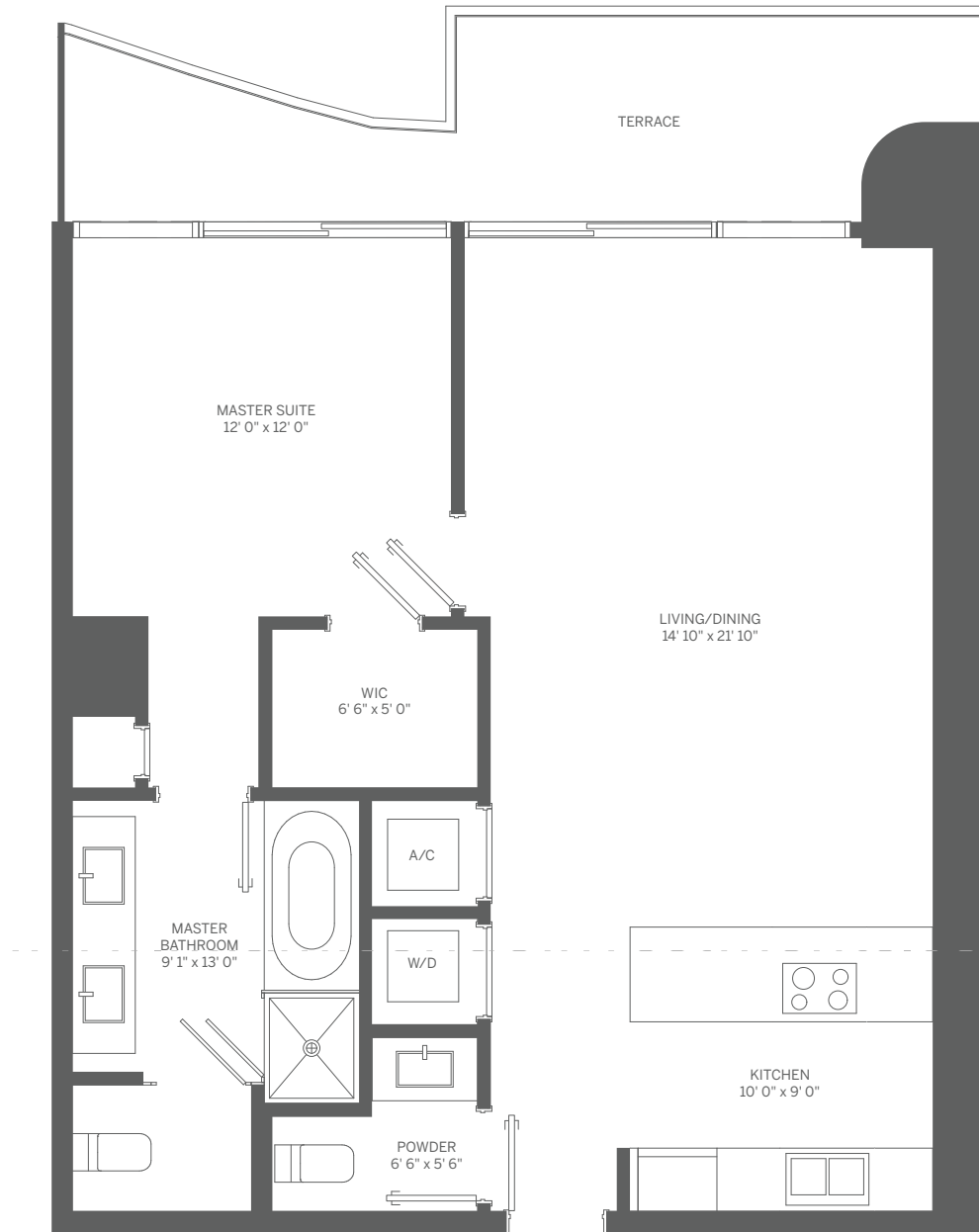


BRICKELL FLATIRON



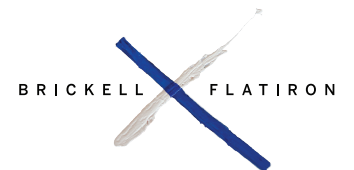
Stated dimensions are measured to the exterior boundaries of the exterior walls and the centerline of interior demising walls and in fact vary from the dimensions that would be determined by using the description and definition of the "Unit" set forth in the Declaration (which generally only includes the interior airspace between the perimeter walls and excludes interior structural components). For your reference, the area of the Unit, determined in accordance with those defined unit boundaries, is 1,110 SF. Note that measurements of rooms set forth on this floor plan are generally taken at the greatest points of each given room (as if the room were a perfect rectangle), without regard for any cutouts. Accordingly, the area of the actual room will typically be smaller than the product obtained by multiplying the stated length times width. All dimensions are approximate and may vary with actual construction, and all floor plans and development plans are subject to change.

N

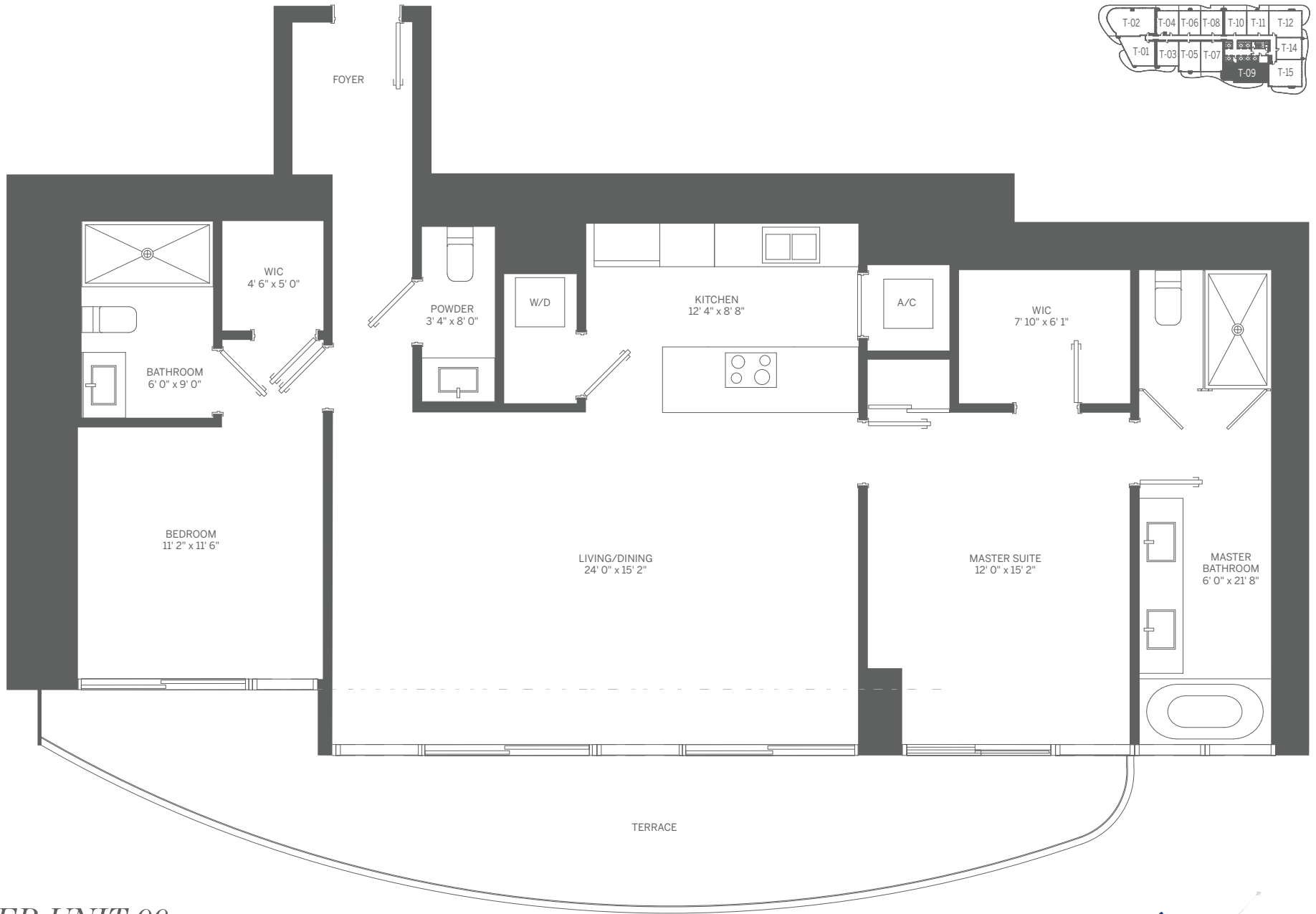
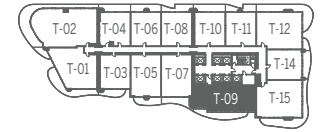


## TOWER UNIT 08 1 BEDROOM / 1.5 BATH

INTERIOR: 905 SF / 84 m<sup>2</sup> TERRACE: 153 SF / 14 m<sup>2</sup> TOTAL: 1,058 SF / 98 m<sup>2</sup>



Stated dimensions are measured to the exterior boundaries of the exterior walls and the centerline of interior demising walls and in fact vary from the dimensions that would be determined by using the description and definition of the "Unit" set forth in the Declaration (which generally only includes the interior airspace between the perimeter walls and excludes interior structural components). For your reference, the area of the Unit, determined in accordance with those defined unit boundaries, is 905 SF. Note that measurements of rooms set forth on this floor plan are generally taken at the greatest points of each given room (as if the room were a perfect rectangle), without regard for any cutouts. Accordingly, the area of the actual room will typically be smaller than the product obtained by multiplying the stated length times width. All dimensions are approximate and may vary with actual construction, and all floor plans and development plans are subject to change.

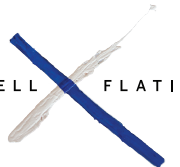



## TOWER UNIT 09 2 BEDROOM / 2.5 BATH

INTERIOR: 1,366 SF / 127 m<sup>2</sup> TERRACE: 288 SF / 27 m<sup>2</sup> TOTAL: 1,654 SF / 154 m<sup>2</sup>

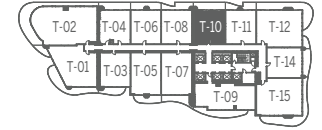
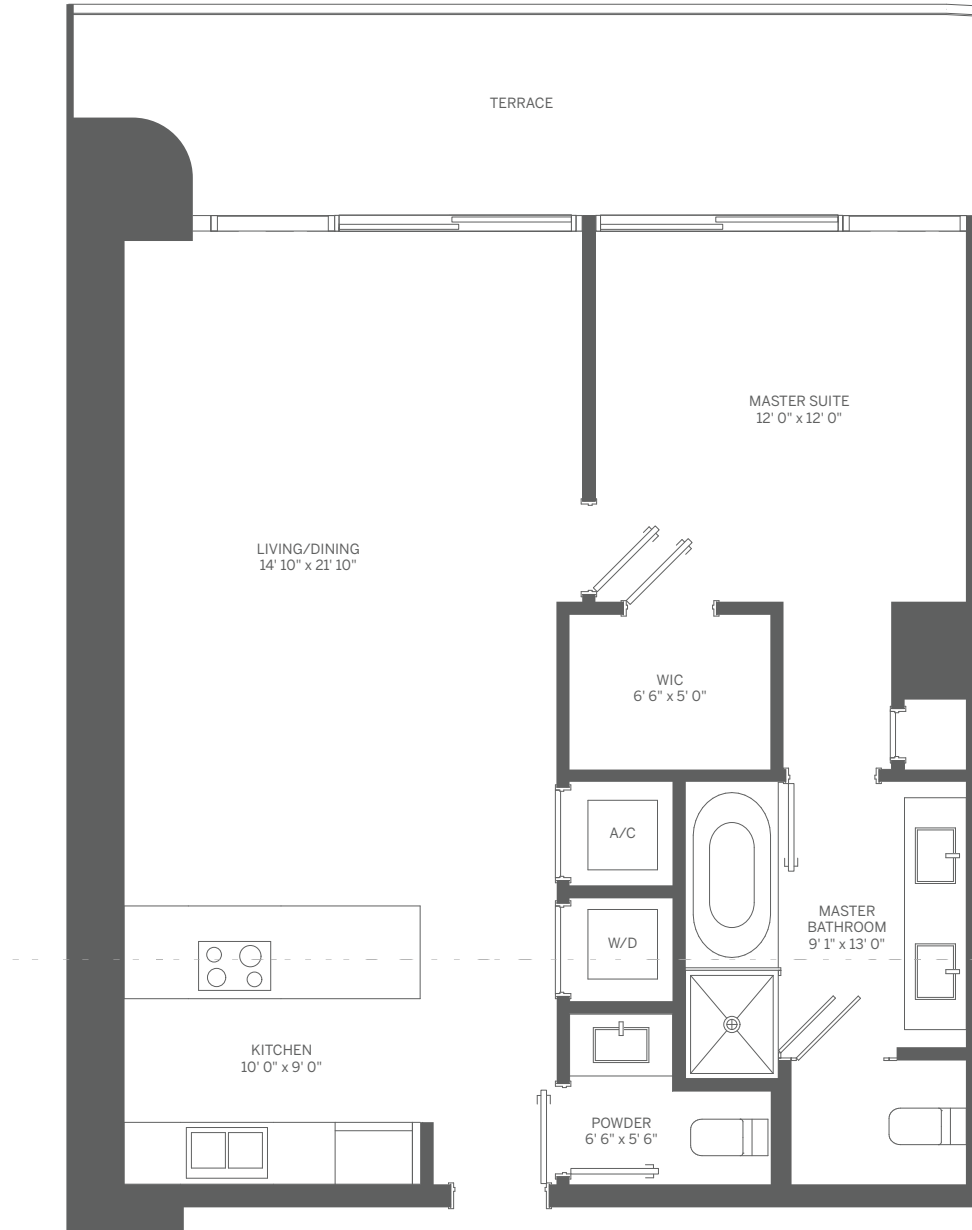


BRICKELL FLATIRON



 Stated dimensions are measured to the exterior boundaries of the exterior walls and the centerline of interior demising walls and in fact vary from the dimensions that would be determined by using the description and definition of the "Unit" set forth in the Declaration (which generally only includes the interior airspace between the perimeter walls and excludes interior structural components). For your reference, the area of the Unit, determined in accordance with those defined unit boundaries, is 1,366 SF. Note that measurements of rooms set forth on this floor plan are generally taken at the greatest points of each given room (as if the room were a perfect rectangle), without regard for any cutouts. Accordingly, the area of the actual room will typically be smaller than the product obtained by multiplying the stated length times width. All dimensions are approximate and may vary with actual construction, and all floor plans and development plans are subject to change.

N

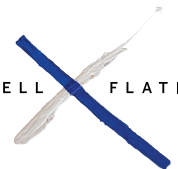


## TOWER UNIT 10 1 BEDROOM / 1.5 BATH

INTERIOR: 905 SF / 84 m<sup>2</sup> TERRACE: 182 SF / 17 m<sup>2</sup> TOTAL: 1,087 SF / 101 m<sup>2</sup>

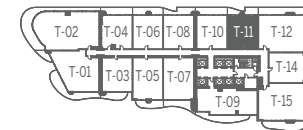
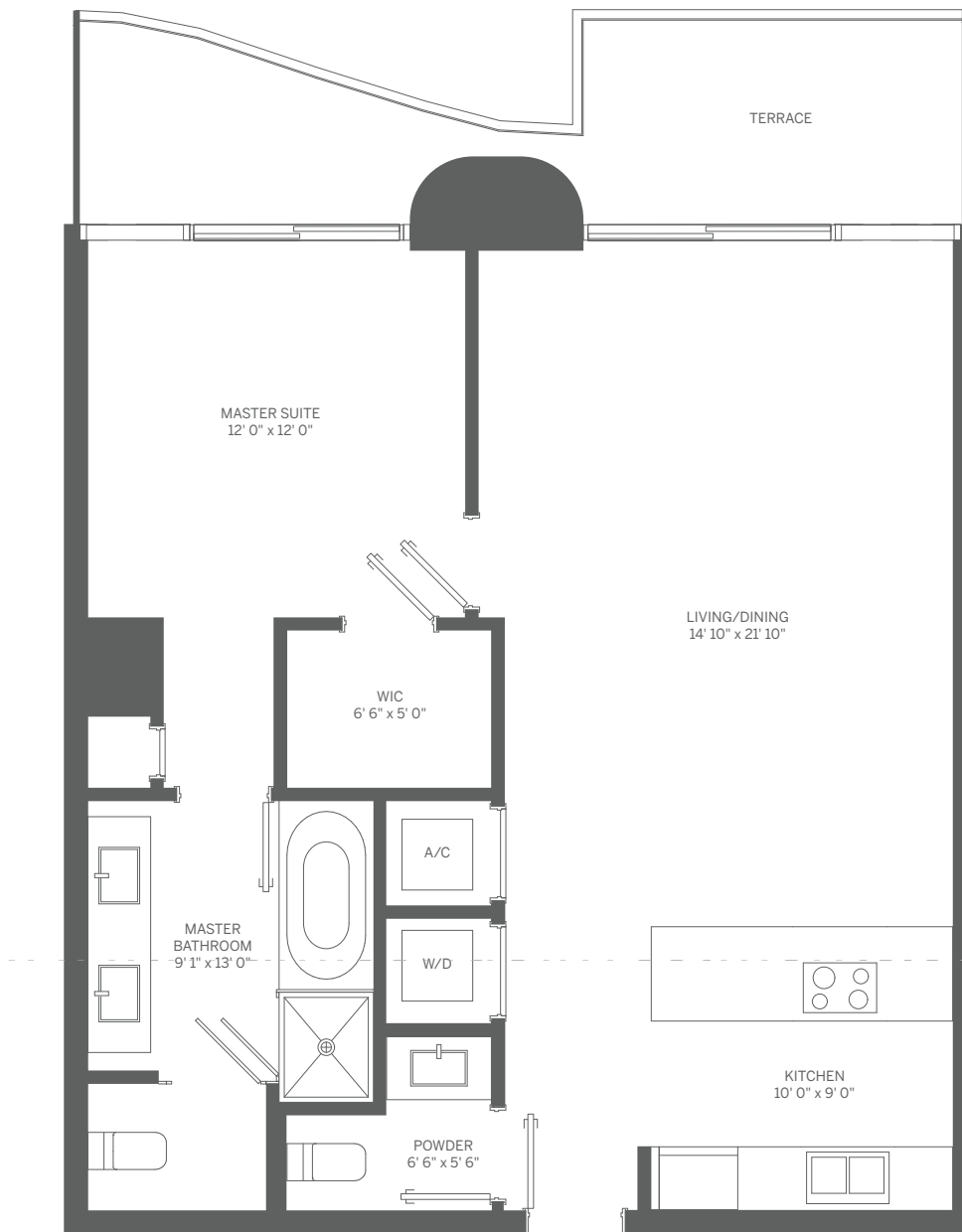


BRICKELL FLATIRON



Stated dimensions are measured to the exterior boundaries of the exterior walls and the centerline of interior demising walls and in fact vary from the dimensions that would be determined by using the description and definition of the "Unit" set forth in the Declaration (which generally only includes the interior airspace between the perimeter walls and excludes interior structural components). For your reference, the area of the Unit, determined in accordance with those defined unit boundaries, is 905 SF. Note that measurements of rooms set forth on this floor plan are generally taken at the greatest points of each given room (as if the room were a perfect rectangle), without regard for any cutouts. Accordingly, the area of the actual room will typically be smaller than the product obtained by multiplying the stated length times width. All dimensions are approximate and may vary with actual construction, and all floor plans and development plans are subject to change.

N



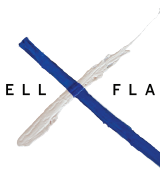
## TOWER UNIT 11

1 BEDROOM / 1.5 BATH

INTERIOR: 906 SF / 84 m<sup>2</sup> TERRACE: 145 SF / 13 m<sup>2</sup> TOTAL: 1,051 SF / 97 m<sup>2</sup>

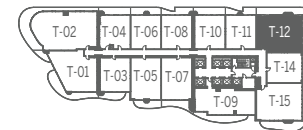


BRICKELL FLATIRON



Stated dimensions are measured to the exterior boundaries of the exterior walls and the centerline of interior demising walls and in fact vary from the dimensions that would be determined by using the description and definition of the "Unit" set forth in the Declaration (which generally only includes the interior airspace between the perimeter walls and excludes interior structural components). For your reference, the area of the Unit, determined in accordance with those defined unit boundaries, is 906 SF. Note that measurements of rooms set forth on this floor plan are generally taken at the greatest points of each given room (as if the room were a perfect rectangle), without regard for any cutouts. Accordingly, the area of the actual room will typically be smaller than the product obtained by multiplying the stated length times width. All dimensions are approximate and may vary with actual construction, and all floor plans and development plans are subject to change.

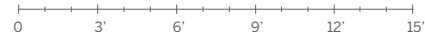
N



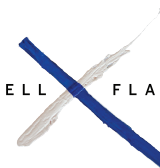
## TOWER UNIT 12

2 BEDROOM + DEN / 2.5 BATH

INTERIOR: 1,446 SF / 134 m<sup>2</sup> TERRACE: 510 SF / 47 m<sup>2</sup> TOTAL: 1,956 SF / 181 m<sup>2</sup>



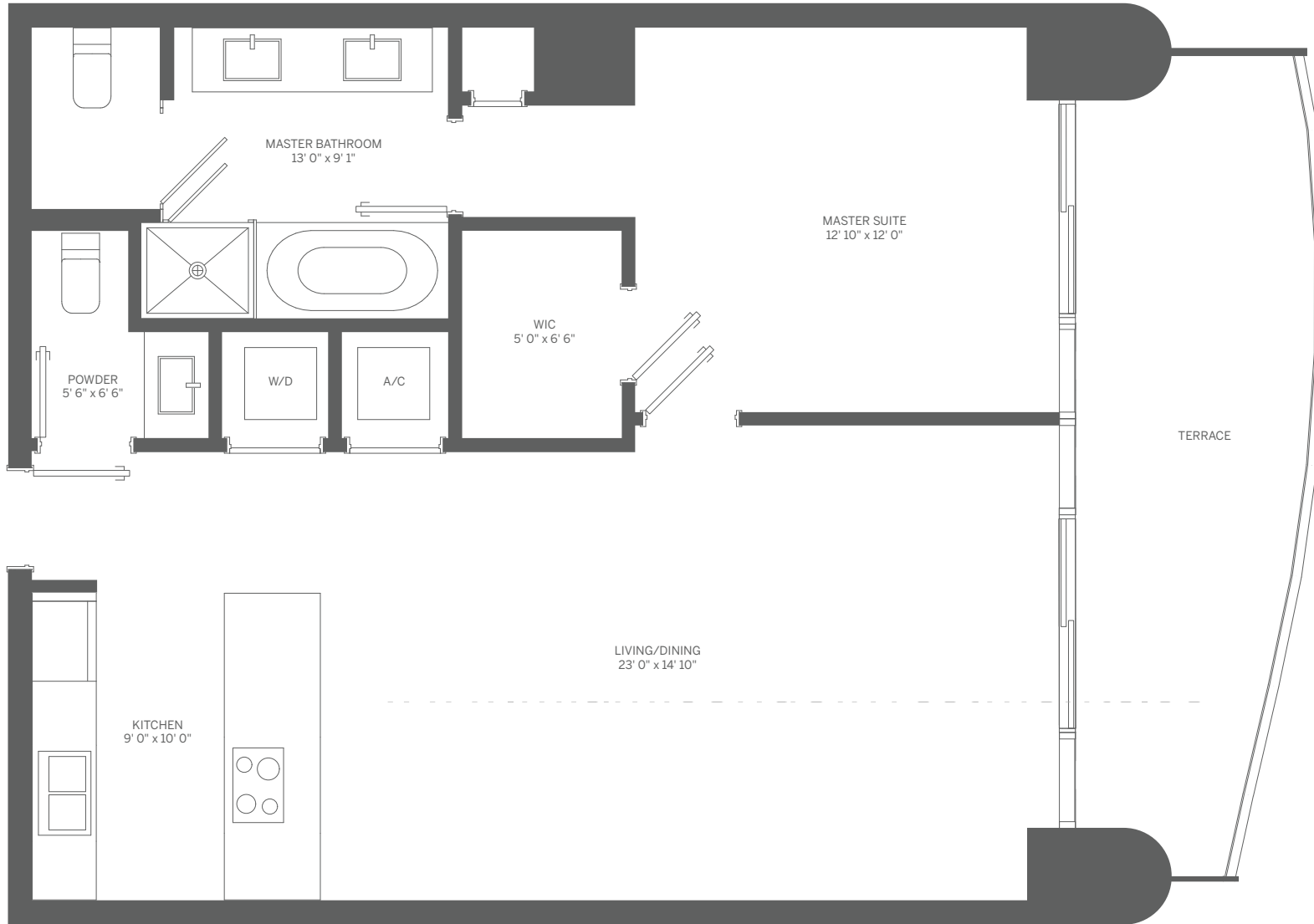
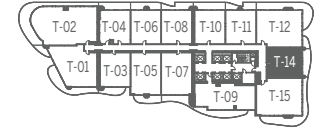
BRICKELL FLATIRON



Stated dimensions are measured to the exterior boundaries of the exterior walls and the centerline of interior demising walls and in fact vary from the dimensions that would be determined by using the description and definition of the "Unit" set forth in the Declaration (which generally only includes the interior airspace between the perimeter walls and excludes interior structural components). For your reference, the area of the Unit, determined in accordance with those defined unit boundaries, is 1,446 SF. Note that measurements of rooms set forth on this floor plan are generally taken at the greatest points of each given room (as if the room were a perfect rectangle), without regard for any cutouts. Accordingly, the area of the actual room will typically be smaller than the product obtained by multiplying the stated length times width. All dimensions are approximate and may vary with actual construction, and all floor plans and development plans are subject to change.

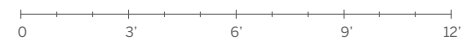


N

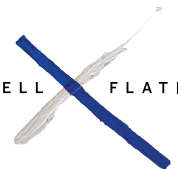


## TOWER UNIT 14 1 BEDROOM / 1.5 BATH

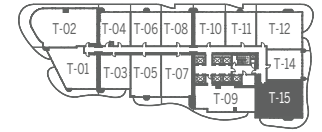
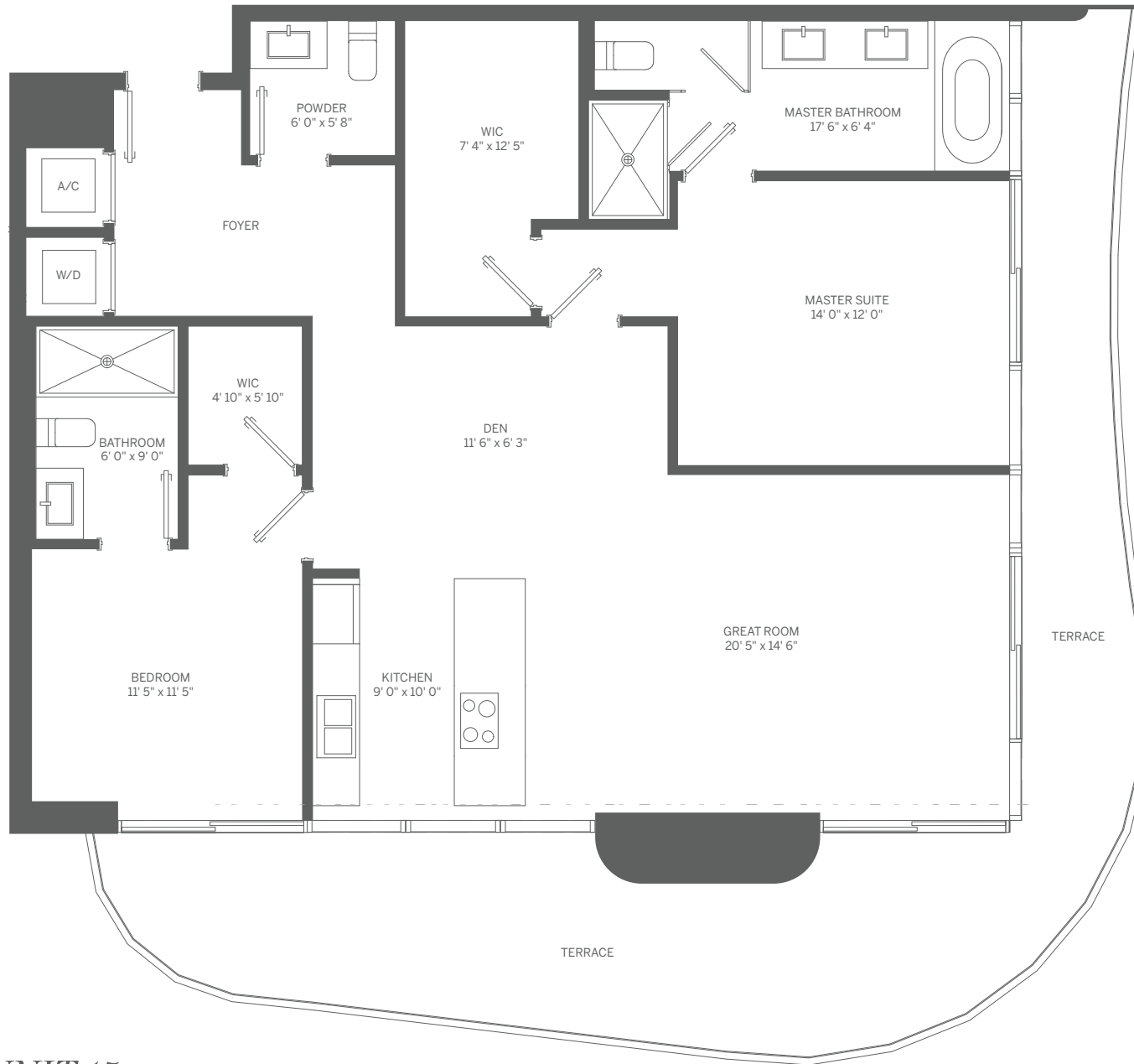
INTERIOR: 933 SF / 87 m<sup>2</sup> TERRACE: 168 SF / 16 m<sup>2</sup> TOTAL: 1,101 SF / 103 m<sup>2</sup>



BRICKELL FLATIRON



Stated dimensions are measured to the exterior boundaries of the exterior walls and the centerline of interior demising walls and in fact vary from the dimensions that would be determined by using the description and definition of the "Unit" set forth in the Declaration (which generally only includes the interior airspace between the perimeter walls and excludes interior structural components). For your reference, the area of the Unit, determined in accordance with those defined unit boundaries, is 933 SF. Note that measurements of rooms set forth on this floor plan are generally taken at the greatest points of each given room (as if the room were a perfect rectangle), without regard for any cutouts. Accordingly, the area of the actual room will typically be smaller than the product obtained by multiplying the stated length times width. All dimensions are approximate and may vary with actual construction, and all floor plans and development plans are subject to change.

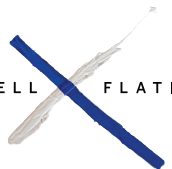



## TOWER UNIT 15 2 BEDROOM + DEN / 2.5 BATH

INTERIOR: 1,446 SF / 134 m<sup>2</sup> TERRACE: 462 SF / 43 m<sup>2</sup> TOTAL: 1,908 SF / 177 m<sup>2</sup>

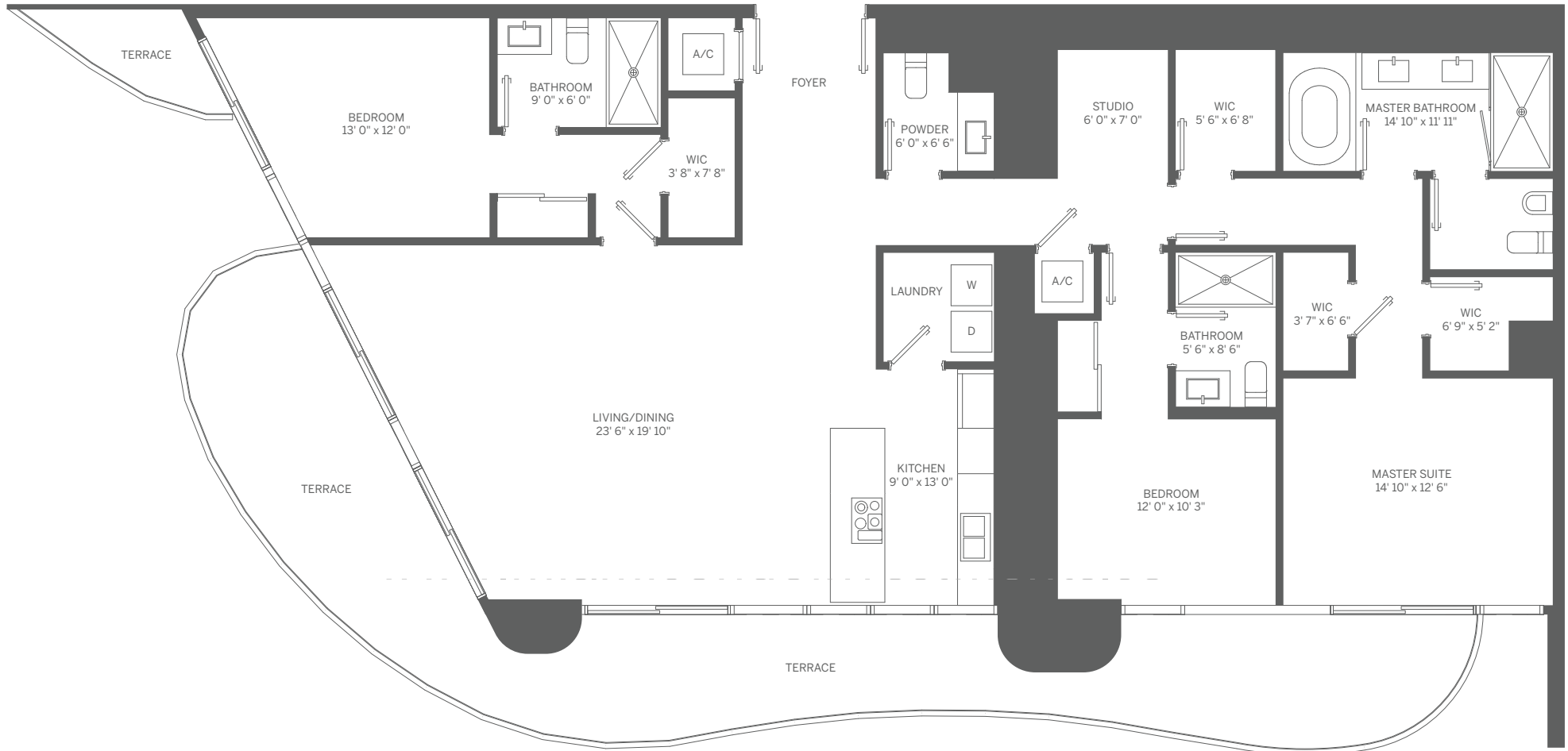
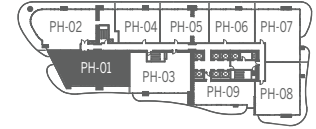


BRICKELL FLATIRON



 Stated dimensions are measured to the exterior boundaries of the exterior walls and the centerline of interior demising walls and in fact vary from the dimensions that would be determined by using the description and definition of the "Unit" set forth in the Declaration (which generally only includes the interior airspace between the perimeter walls and excludes interior structural components). For your reference, the area of the Unit, determined in accordance with those defined unit boundaries, is 1,446 SF. Note that measurements of rooms set forth on this floor plan are generally taken at the greatest points of each given room (as if the room were a perfect rectangle), without regard for any cutouts. Accordingly, the area of the actual room will typically be smaller than the product obtained by multiplying the stated length times width. All dimensions are approximate and may vary with actual construction, and all floor plans and development plans are subject to change.

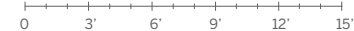
N



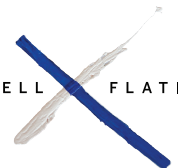
# PENTHOUSE 01

3 BEDROOM / 3.5 BATH

INTERIOR: 2,160 SF / 201 m<sup>2</sup> TERRACE: 542 SF / 50 m<sup>2</sup> TOTAL: 2,702 SF / 251 m<sup>2</sup>

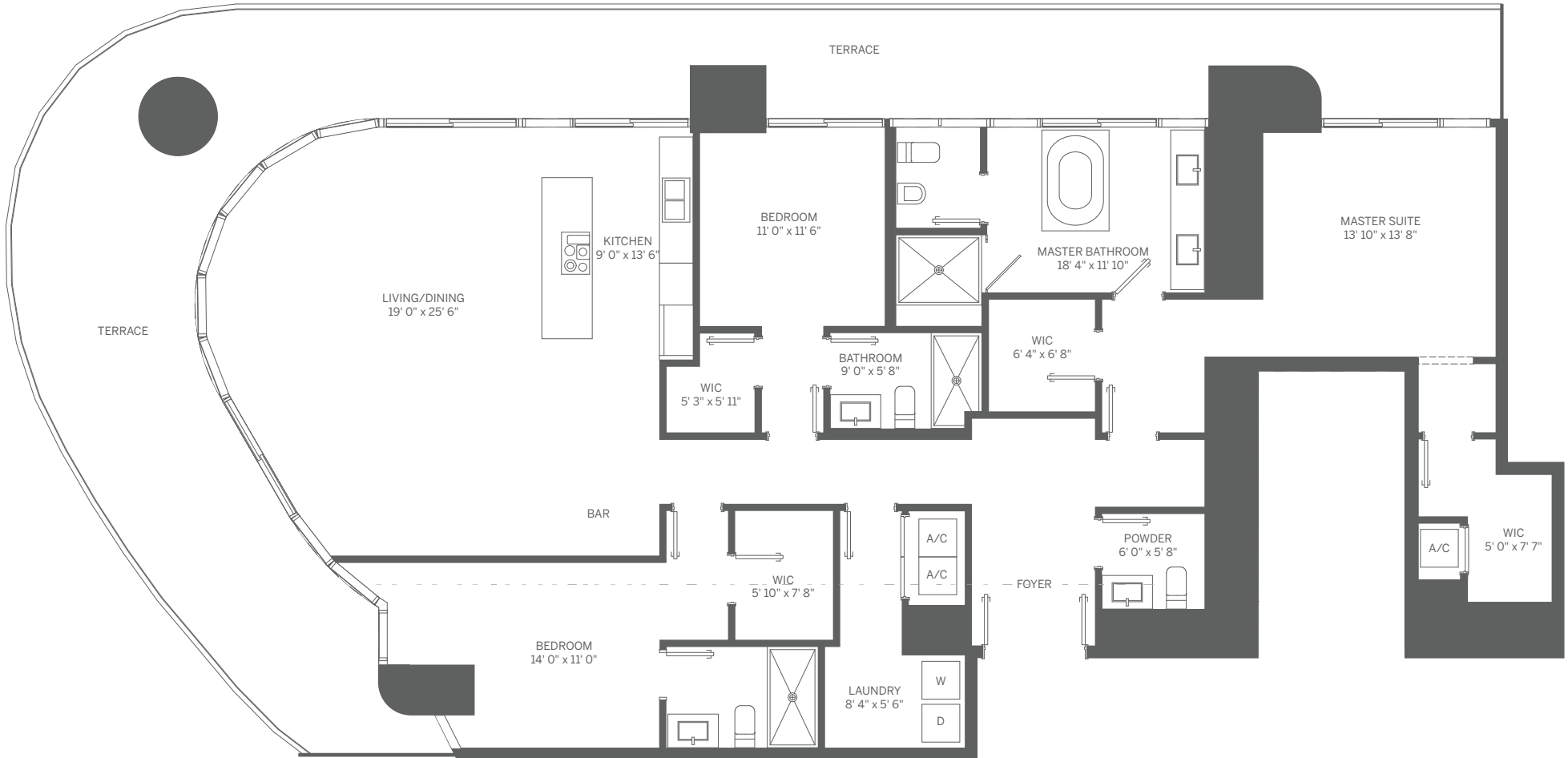
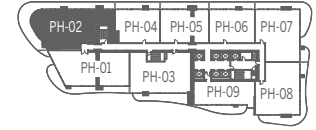


BRICKELL FLATIRON



Stated dimensions are measured to the exterior boundaries of the exterior walls and the centerline of interior demising walls and in fact vary from the dimensions that would be determined by using the description and definition of the "Unit" set forth in the Declaration (which generally only includes the interior airspace between the perimeter walls and excludes interior structural components). For your reference, the area of the Unit, determined in accordance with those defined unit boundaries, is 2,160 SF. Note that measurements of rooms set forth on this floor plan are generally taken at the greatest points of each given room (as if the room were a perfect rectangle), without regard for any cutouts. Accordingly, the area of the actual room will typically be smaller than the product obtained by multiplying the stated length times width. All dimensions are approximate and may vary with actual construction, and all floor plans and development plans are subject to change.

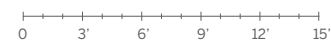
N



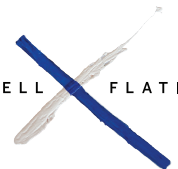
## PENTHOUSE 02

3 BEDROOM / 2.5 BATH

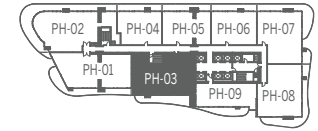
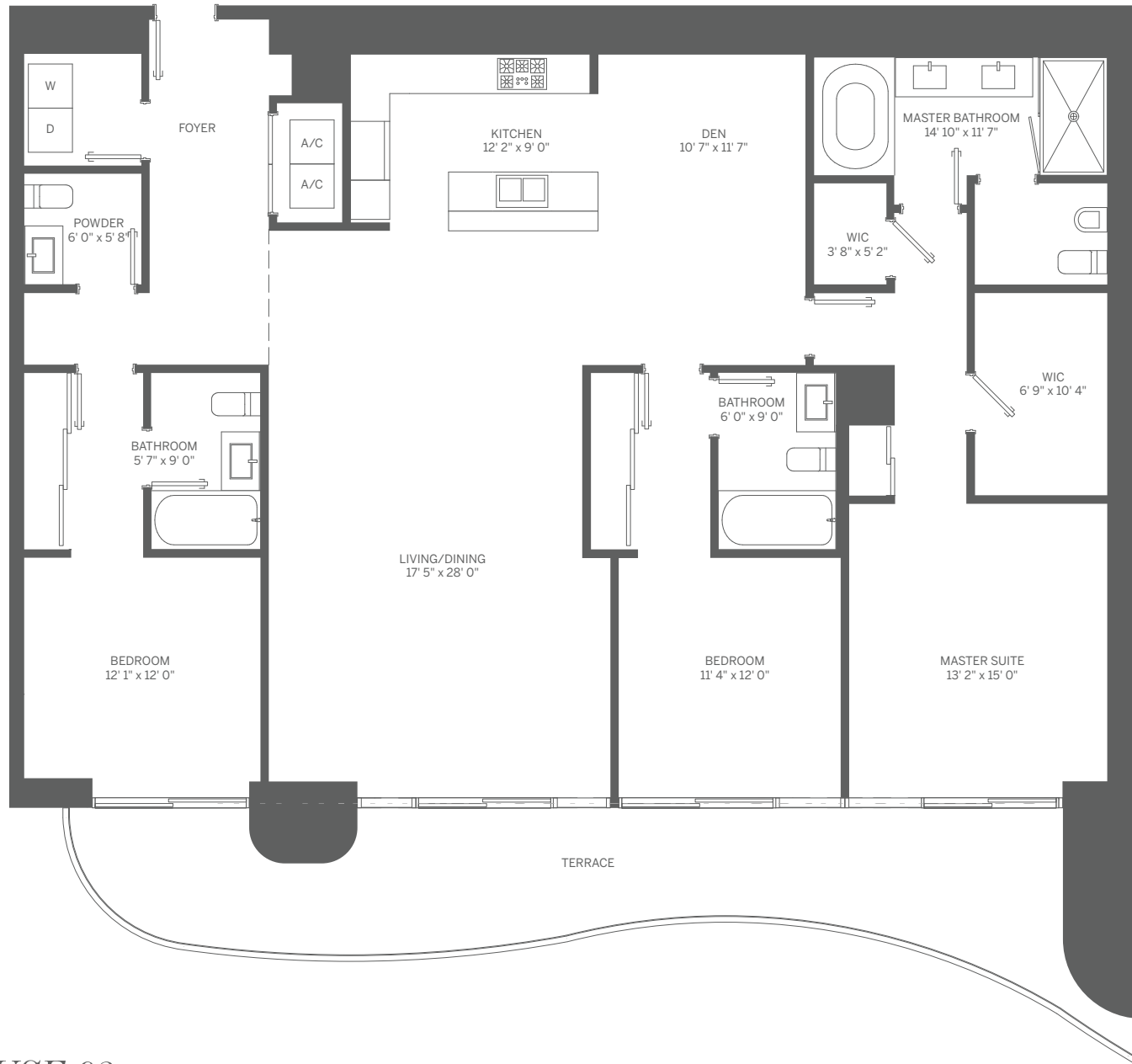
INTERIOR: 2,314 SF / 215 m<sup>2</sup> TERRACE: 950 SF / 88 m<sup>2</sup> TOTAL: 3,264 SF / 303 m<sup>2</sup>



BRICKELL FLATIRON



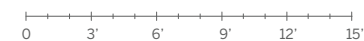
Stated dimensions are measured to the exterior boundaries of the exterior walls and the centerline of interior demising walls and in fact vary from the dimensions that would be determined by using the description and definition of the "Unit" set forth in the Declaration (which generally only includes the interior airspace between the perimeter walls and excludes interior structural components). For your reference, the area of the Unit, determined in accordance with those defined unit boundaries, is 2,314 SF. Note that measurements of rooms set forth on this floor plan are generally taken at the greatest points of each given room (as if the room were a perfect rectangle), without regard for any cutouts. Accordingly, the area of the actual room will typically be smaller than the product obtained by multiplying the stated length times width. All dimensions are approximate and may vary with actual construction, and all floor plans and development plans are subject to change.



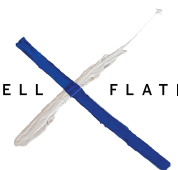
## PENTHOUSE 03


3 BEDROOM + DEN / 3.5 BATH

INTERIOR: 2,203 SF / 205 m<sup>2</sup> TERRACE: 335 SF / 31 m<sup>2</sup> TOTAL: 2,538 SF / 236 m<sup>2</sup>

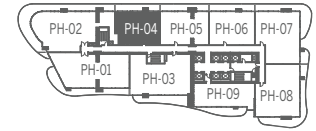
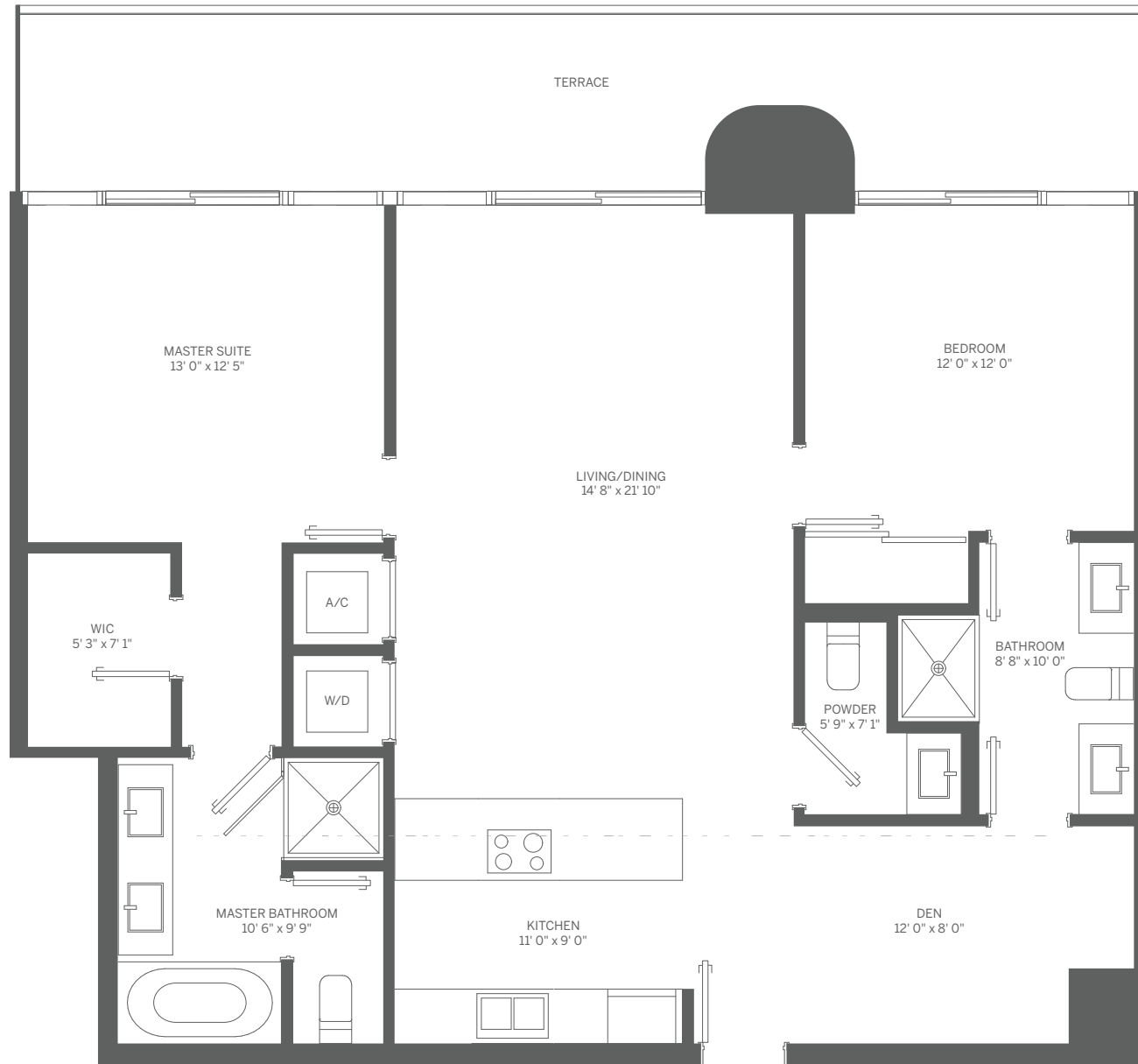


BRICKELL FLATIRON



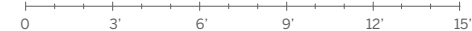
 Stated dimensions are measured to the exterior boundaries of the exterior walls and the centerline of interior demising walls and in fact vary from the dimensions that would be determined by using the description and definition of the "Unit" set forth in the Declaration (which generally only includes the interior airspace between the perimeter walls and excludes interior structural components). For your reference, the area of the Unit, determined in accordance with those defined unit boundaries, is 2,203 SF. Note that measurements of rooms set forth on this floor plan are generally taken at the greatest points of each given room (as if the room were a perfect rectangle), without regard for any cutouts. Accordingly, the area of the actual room will typically be smaller than the product obtained by multiplying the stated length times width. All dimensions are approximate and may vary with actual construction, and all floor plans and development plans are subject to change.

N

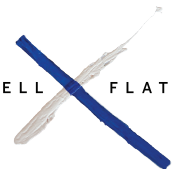


## PENTHOUSE 04 2 BEDROOM + DEN / 2.5 BATH

INTERIOR: 1,275 SF / 118 m<sup>2</sup> TERRACE: 258 SF / 24 m<sup>2</sup> TOTAL: 1,533 SF / 142 m<sup>2</sup>

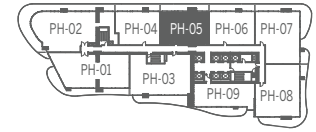
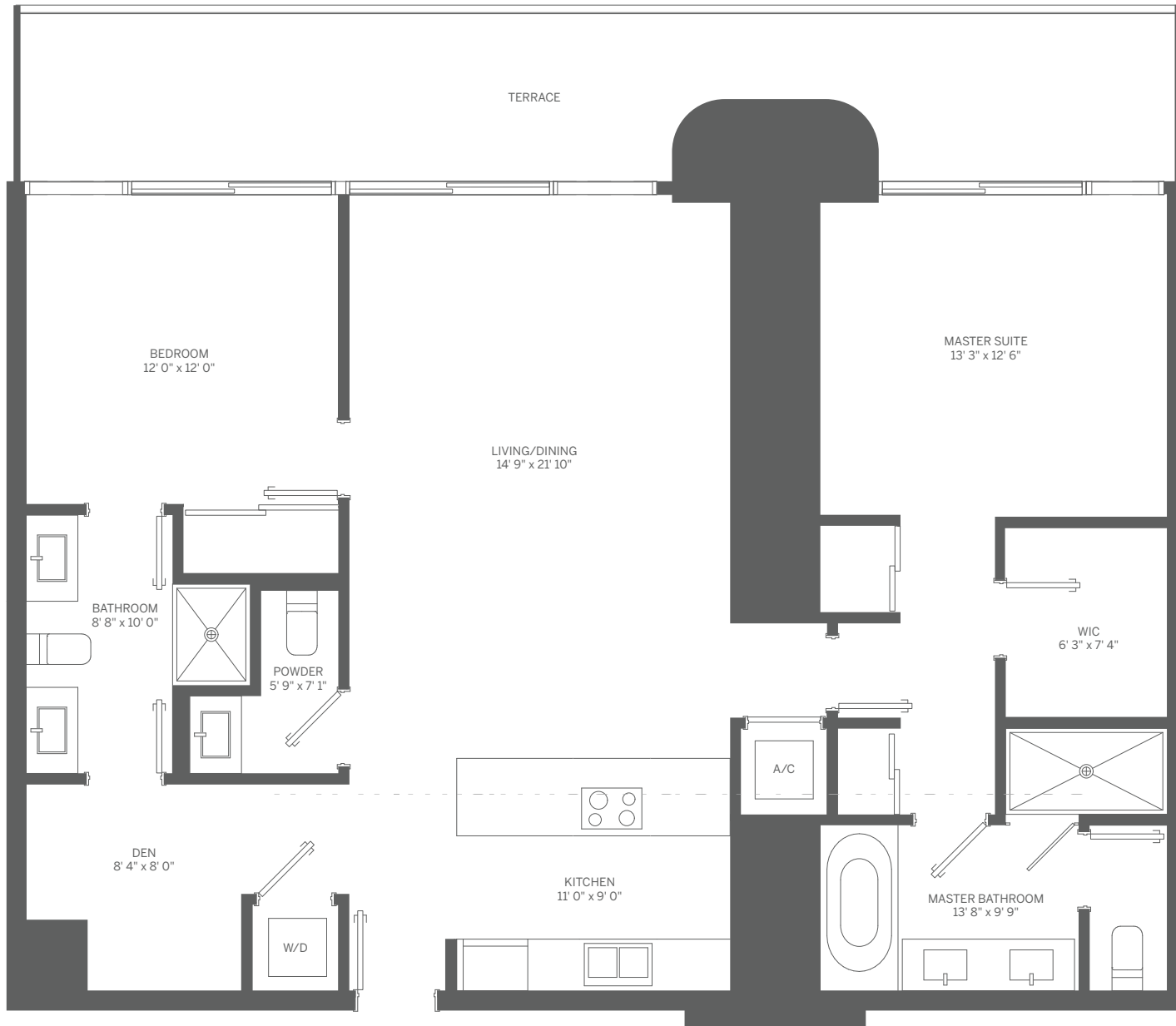


BRICKELL FLATIRON



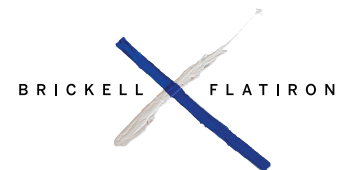
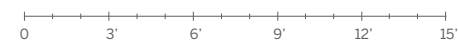
Stated dimensions are measured to the exterior boundaries of the exterior walls and the centerline of interior demising walls and in fact vary from the dimensions that would be determined by using the description and definition of the "Unit" set forth in the Declaration (which generally only includes the interior airspace between the perimeter walls and excludes interior structural components). For your reference, the area of the Unit, determined in accordance with those defined unit boundaries, is 1,275 SF. Note that measurements of rooms set forth on this floor plan are generally taken at the greatest points of each given room (as if the room were a perfect rectangle), without regard for any cutouts. Accordingly, the area of the actual room will typically be smaller than the product obtained by multiplying the stated length times width. All dimensions are approximate and may vary with actual construction, and all floor plans and development plans are subject to change.

N

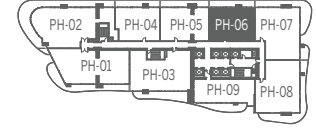
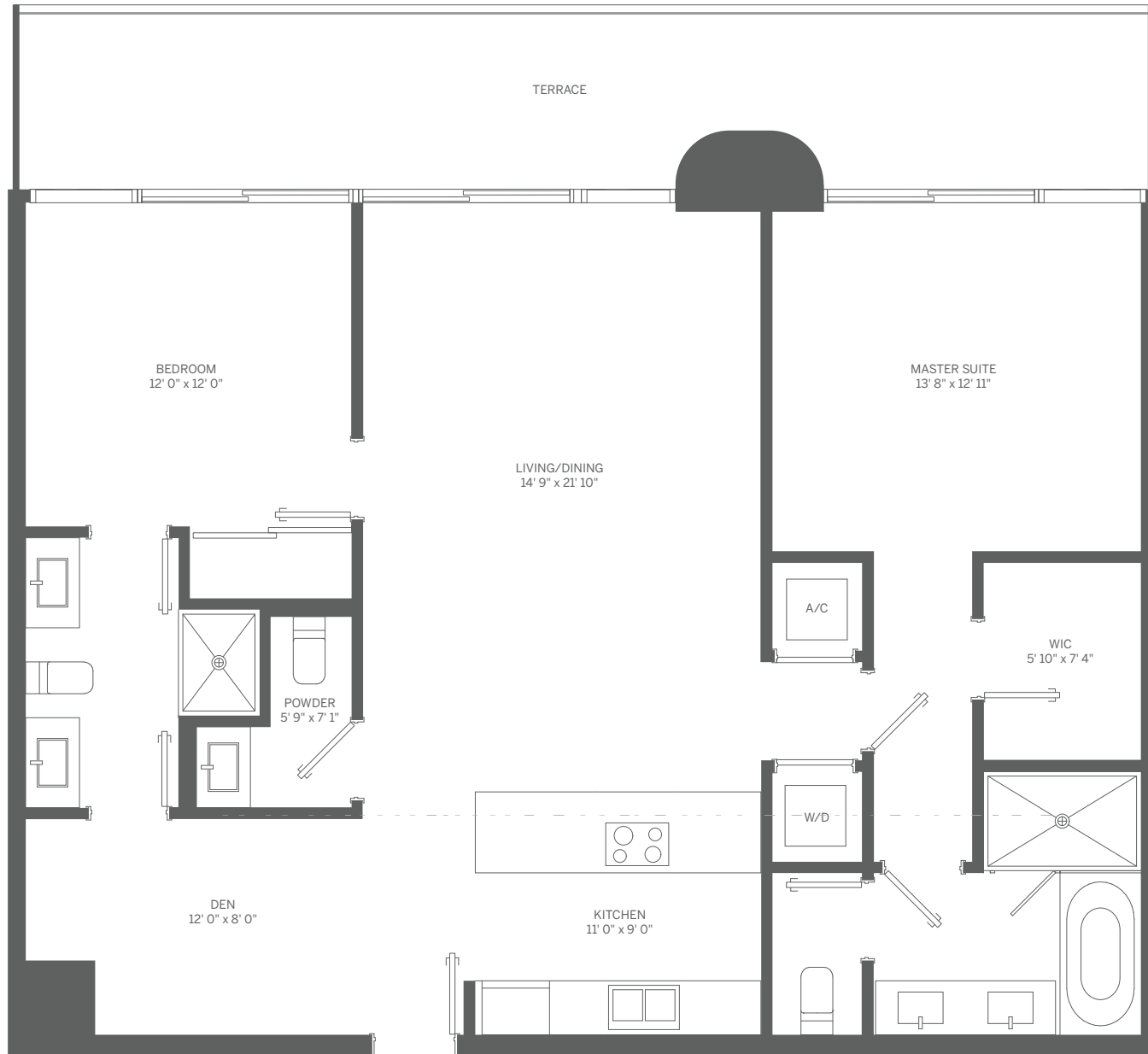


## PENTHOUSE 05 2 BEDROOM + DEN / 2.5 BATH

INTERIOR: 1,368 SF / 127 m<sup>2</sup> TERRACE: 273 SF / 25 m<sup>2</sup> TOTAL: 1,641 SF / 152 m<sup>2</sup>



Stated dimensions are measured to the exterior boundaries of the exterior walls and the centerline of interior demising walls and in fact vary from the dimensions that would be determined by using the description and definition of the "Unit" set forth in the Declaration (which generally only includes the interior airspace between the perimeter walls and excludes interior structural components). For your reference, the area of the Unit, determined in accordance with those defined unit boundaries, is 1,368 SF. Note that measurements of rooms set forth on this floor plan are generally taken at the greatest points of each given room (as if the room were a perfect rectangle), without regard for any cutouts. Accordingly, the area of the actual room will typically be smaller than the product obtained by multiplying the stated length times width. All dimensions are approximate and may vary with actual construction, and all floor plans and development plans are subject to change.



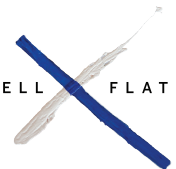
## PENTHOUSE 06


2 BEDROOM + DEN / 2.5 BATH

INTERIOR: 1,333 SF / 124 m<sup>2</sup> TERRACE: 268 SF / 25 m<sup>2</sup> TOTAL: 1,601 SF / 149 m<sup>2</sup>

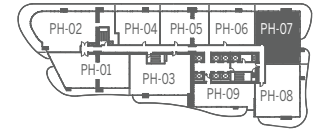


BRICKELL FLATIRON



 Stated dimensions are measured to the exterior boundaries of the exterior walls and the centerline of interior demising walls and in fact vary from the dimensions that would be determined by using the description and definition of the "Unit" set forth in the Declaration (which generally only includes the interior airspace between the perimeter walls and excludes interior structural components). For your reference, the area of the Unit, determined in accordance with those defined unit boundaries, is 1,333 SF. Note that measurements of rooms set forth on this floor plan are generally taken at the greatest points of each given room (as if the room were a perfect rectangle), without regard for any cutouts. Accordingly, the area of the actual room will typically be smaller than the product obtained by multiplying the stated length times width. All dimensions are approximate and may vary with actual construction, and all floor plans and development plans are subject to change.

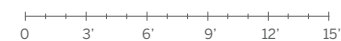




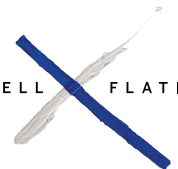
## PENTHOUSE 07


3 BEDROOM / 3.5 BATH

INTERIOR: 1,882 SF / 175 m<sup>2</sup> TERRACE: 634 SF / 59 m<sup>2</sup> TOTAL: 2,516 SF / 234 m<sup>2</sup>

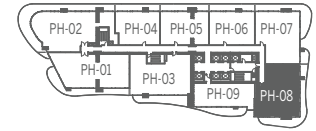
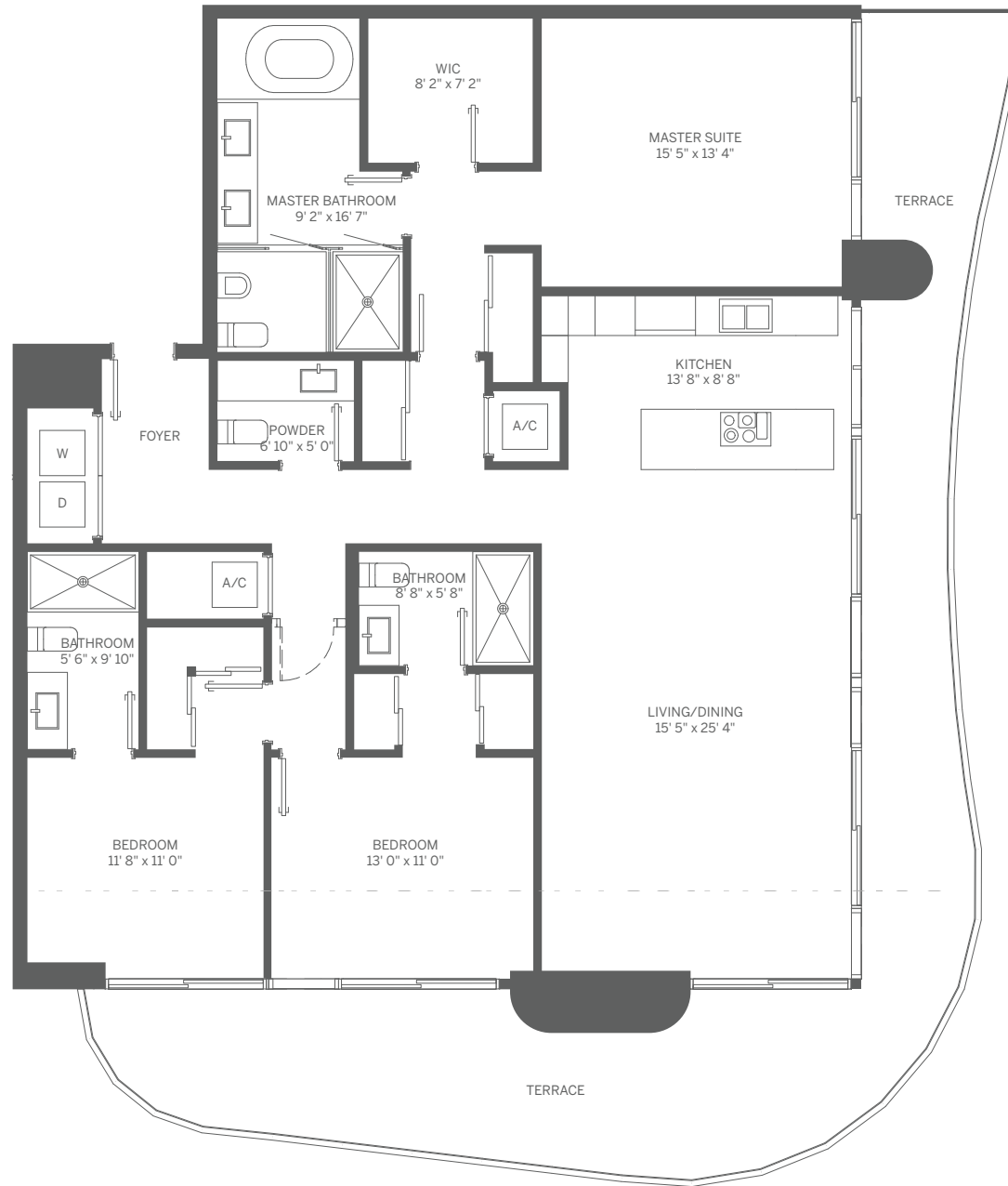


BRICKELL FLATIRON



 Stated dimensions are measured to the exterior boundaries of the exterior walls and the centerline of interior demising walls and in fact vary from the dimensions that would be determined by using the description and definition of the "Unit" set forth in the Declaration (which generally only includes the interior airspace between the perimeter walls and excludes interior structural components). For your reference, the area of the Unit, determined in accordance with those defined unit boundaries, is 1,882 SF. Note that measurements of rooms set forth on this floor plan are generally taken at the greatest points of each given room (as if the room were a perfect rectangle), without regard for any cutouts. Accordingly, the area of the actual room will typically be smaller than the product obtained by multiplying the stated length times width. All dimensions are approximate and may vary with actual construction, and all floor plans and development plans are subject to change.

N



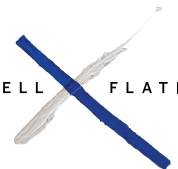
## PENTHOUSE 08

3 BEDROOM / 3.5 BATH

INTERIOR: 1,882 SF / 175 m<sup>2</sup> TERRACE: 594 SF / 55 m<sup>2</sup> TOTAL: 2,476 SF / 230 m<sup>2</sup>



BRICKELL FLATIRON



Stated dimensions are measured to the exterior boundaries of the exterior walls and the centerline of interior demising walls and in fact vary from the dimensions that would be determined by using the description and definition of the "Unit" set forth in the Declaration (which generally only includes the interior airspace between the perimeter walls and excludes interior structural components). For your reference, the area of the Unit, determined in accordance with those defined unit boundaries, is 1,882 SF. Note that measurements of rooms set forth on this floor plan are generally taken at the greatest points of each given room (as if the room were a perfect rectangle), without regard for any cutouts. Accordingly, the area of the actual room will typically be smaller than the product obtained by multiplying the stated length times width. All dimensions are approximate and may vary with actual construction, and all floor plans and development plans are subject to change.

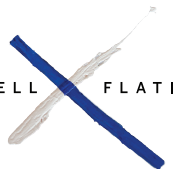



## PENTHOUSE 09 2 BEDROOM / 2.5 BATH

INTERIOR: 1,366 SF / 127 m<sup>2</sup> TERRACE: 288 SF / 27 m<sup>2</sup> TOTAL: 1,654 SF / 154 m<sup>2</sup>



BRICKELL FLATIRON



 Stated dimensions are measured to the exterior boundaries of the exterior walls and the centerline of interior demising walls and in fact vary from the dimensions that would be determined by using the description and definition of the "Unit" set forth in the Declaration (which generally only includes the interior airspace between the perimeter walls and excludes interior structural components). For your reference, the area of the Unit, determined in accordance with those defined unit boundaries, is 1,366 SF. Note that measurements of rooms set forth on this floor plan are generally taken at the greatest points of each given room (as if the room were a perfect rectangle), without regard for any cutouts. Accordingly, the area of the actual room will typically be smaller than the product obtained by multiplying the stated length times width. All dimensions are approximate and may vary with actual construction, and all floor plans and development plans are subject to change.