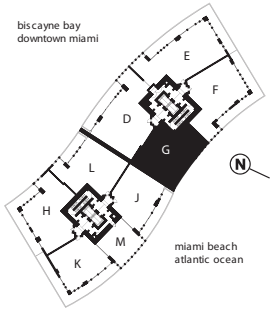


ICON

residence G

2 bedrooms, 2 baths
1,536 sq. ft. 142.70 m²
226 sq. ft. 21.00 m² balcony
1,762 sq. ft. 163.70 m² total

biscayne bay
downtown miami

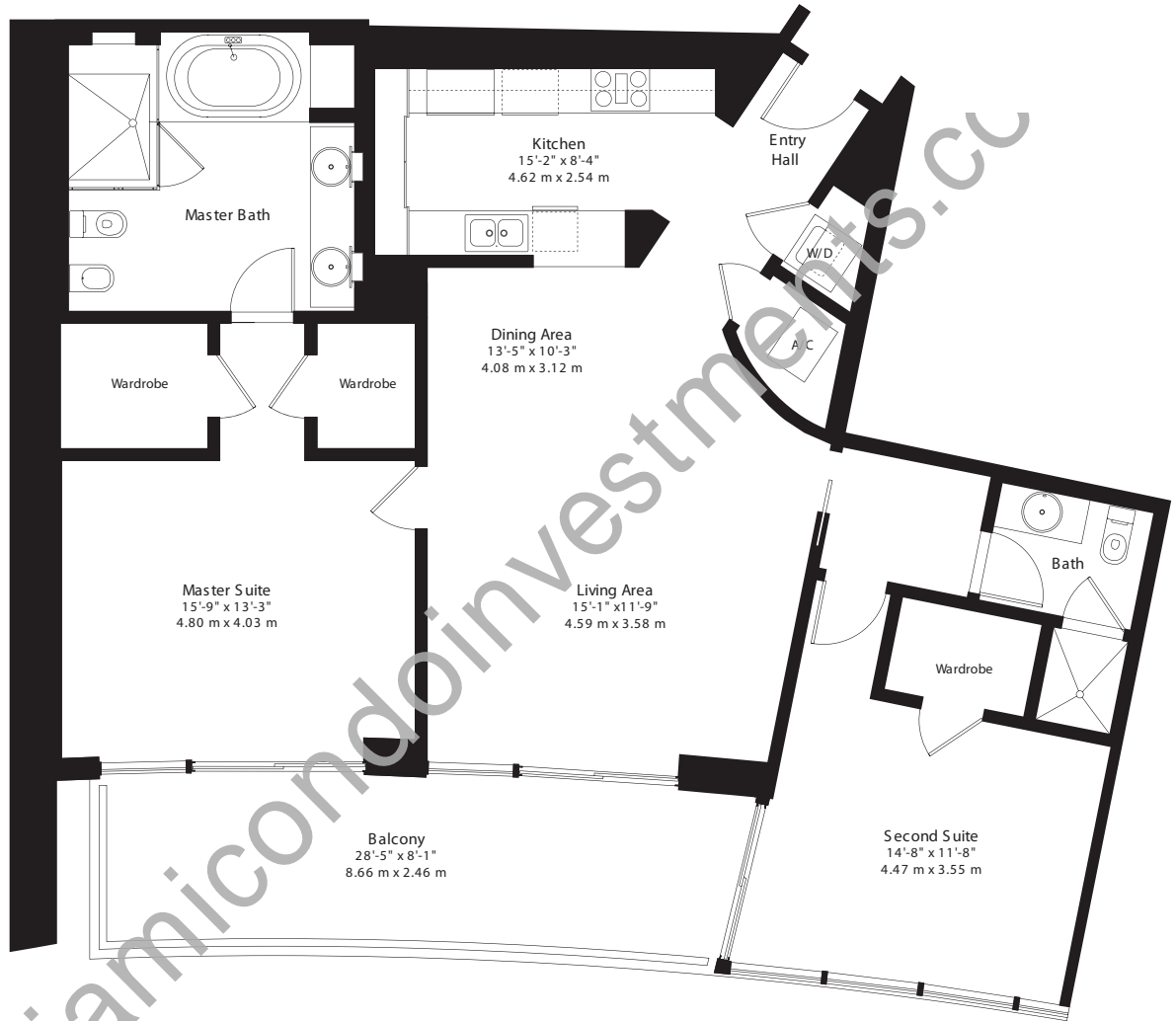


building amenities

- + philippe starck designed common areas
- + billiard room
- + heated lap pool
- + heated infinity-edged pool
- + café
- + conference room
- + spa
- + concierge services
- + valet parking

residences amenities

- + kitchens featuring marble or granite counter tops, imported european custom cabinetry, Miele® appliances and Sub-Zero® built-in refrigerator-freezer
- + master bathrooms furnished with european cabinetry, marble or granite counter tops, Philippe Starck fixtures and seamless shower enclosures
- + spacious walk-in closets
- + wiring for high-speed cable modem internet service
- + 9' high smooth ceilings



Note: All dimensions are approximate and all floor and development plans are subject to change without notice.