



1100

MILLECENTO

by pininfarina



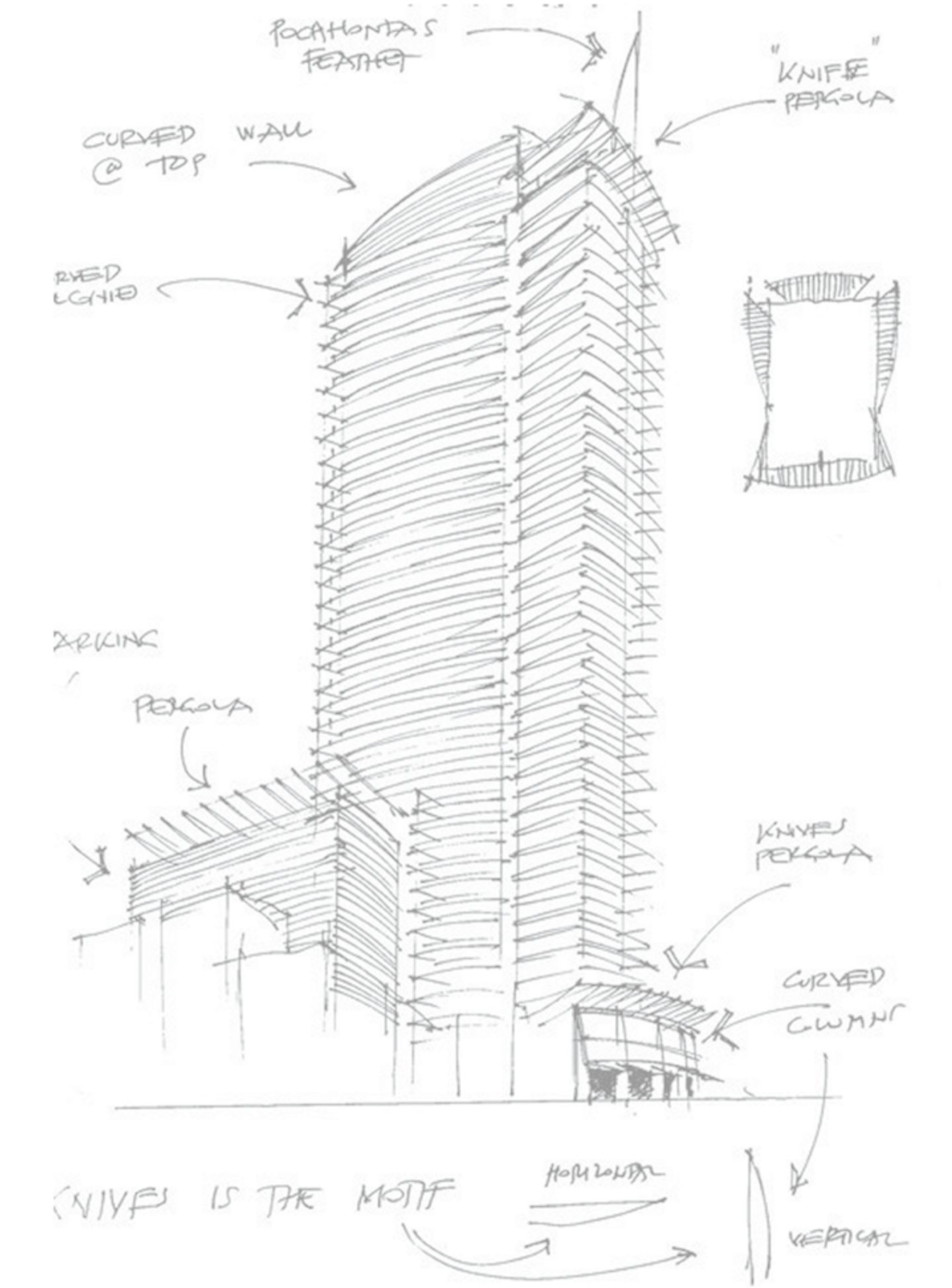
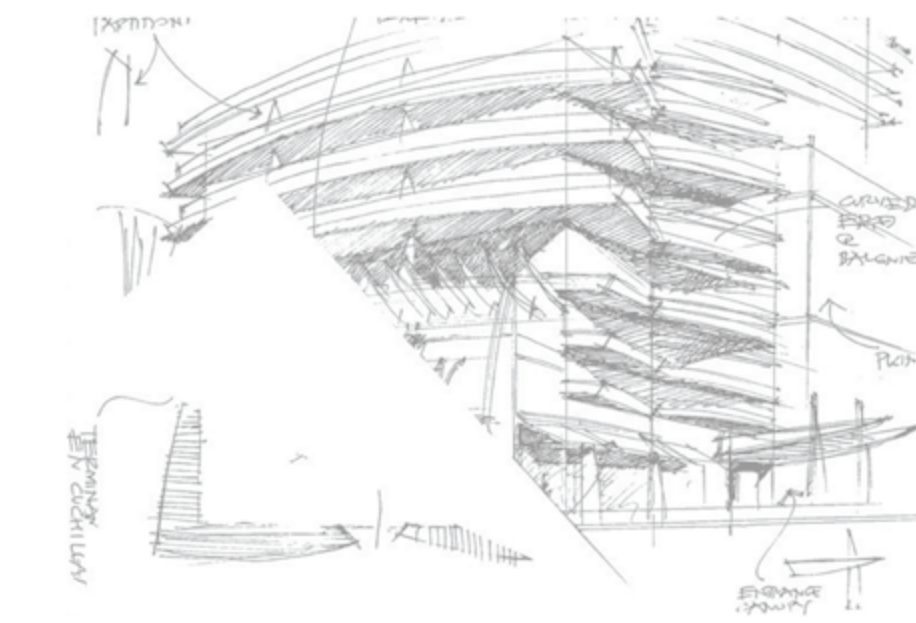
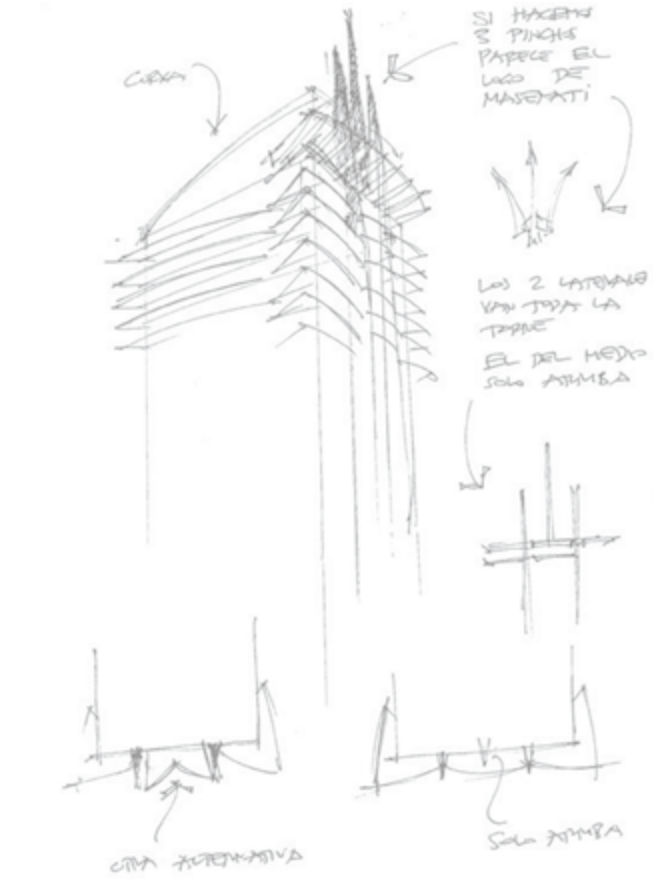
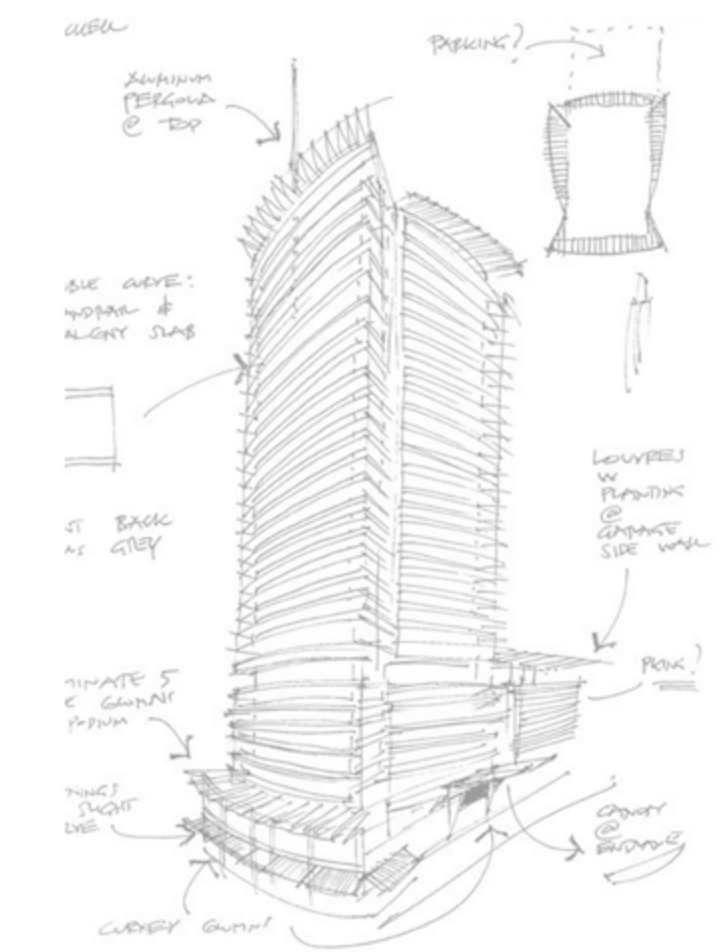
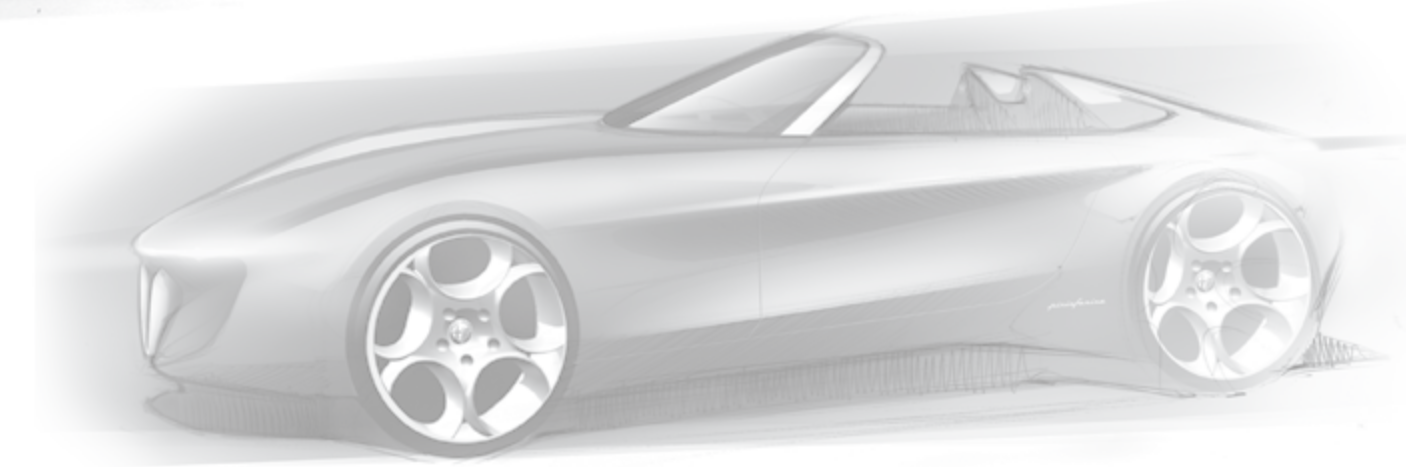
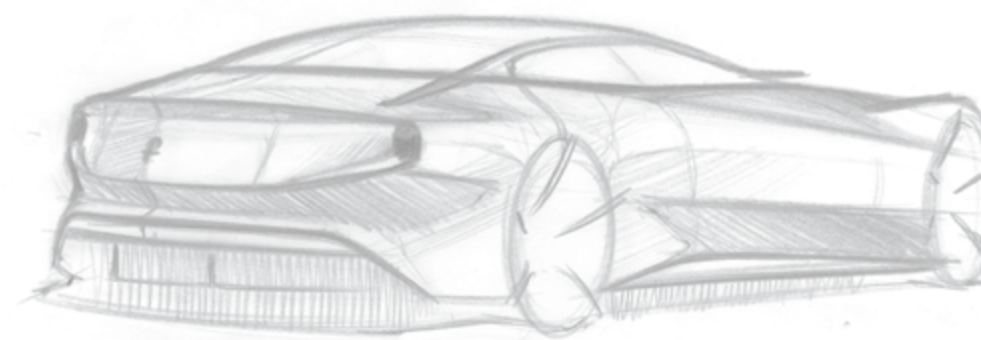
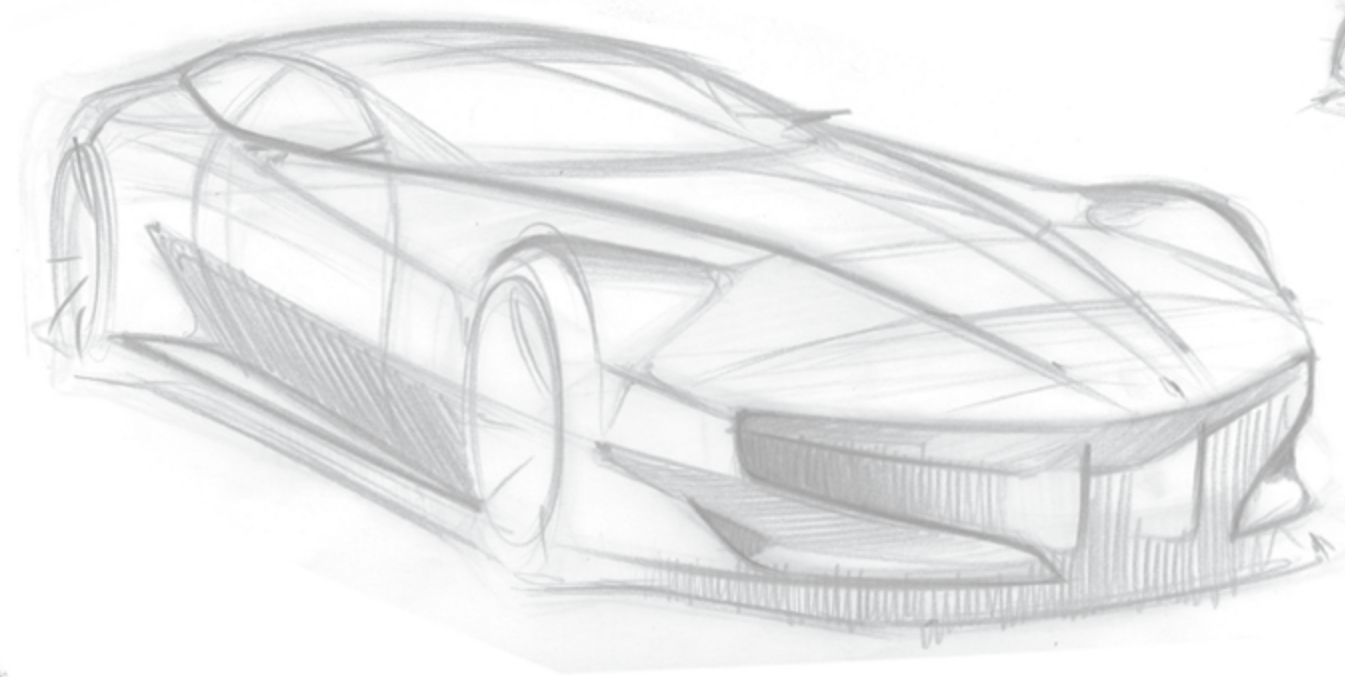
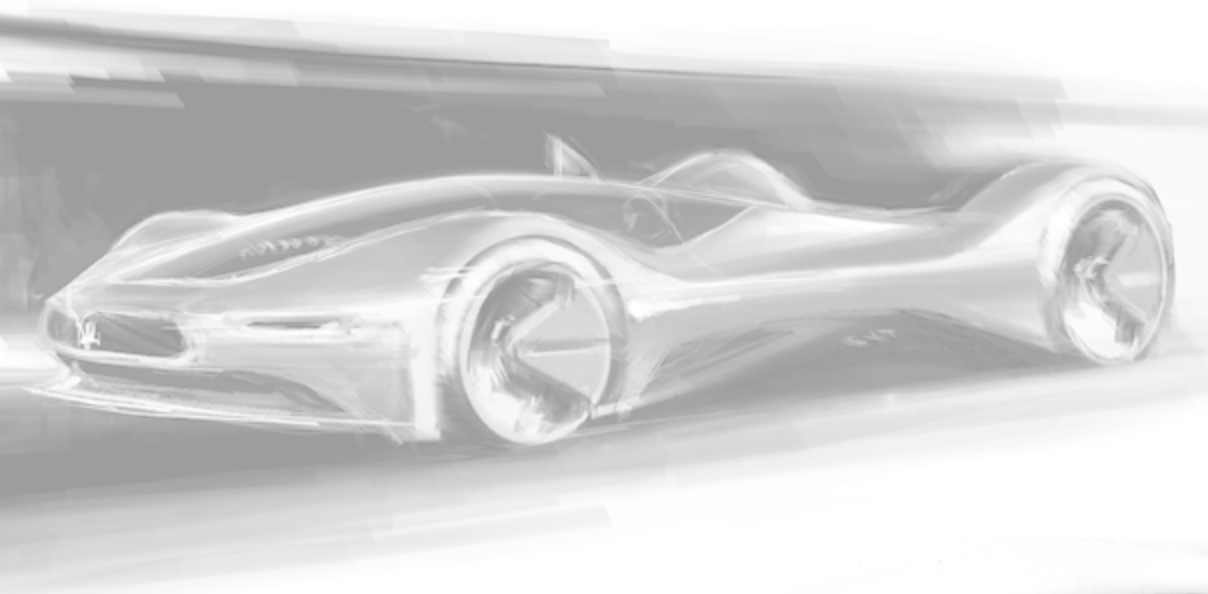
I MET CARLOS OTT IN 2001 DURING ONE OF MY VACATIONS IN PUNTA DEL ESTE THRU A MUTUAL FRIEND. HIS STORIES OF HIS BEGINNINGS AS A YOUNG DESIGNER OF CARS IN URUGUAY ALWAYS IMPRESSED ME. HE SPOKE WITH SUCH PASSION OF THE LINES AND ELEGANCE OF CARS. HE ALWAYS SAID HE STUDIED ARCHITECTURE BECAUSE OF HIS FATHER BUT REALLY HIS LOVE LIES WITH CAR DESIGN. HOIS BUILDING EPITHOMIZE THE PURITY OF THE BOLD STROKES OF CAR DESIGN. FOR YEARS WE WAITED AND WAITED FOR THE RIGHT PROJECT TO WORK TOGETHER. FINALLY AT MILLECENTO WE FOUND A MATCH MADE IN HEAVEN. THE STORY OF PININFARINA DATES BACK TO 1930. SINCE THEN THEIR NAME HAS BEEN ASSOCIATED WITH THE BEST AVANT GARDE CAR AND PRODUCT DESIGN. HIS NAME IS INSCRIBED IN EVERY FERRARI, MASSERATI, ALFA ROMEO, EVEN INDUSTRIAL AND INTERIOR DESIGN. TODAY, THESE TWO DENIZENS OF BOLD, SLEEK STYLE CROSS PATHS AGAIN WITH A 21ST CENTURY DESIGN COLLABORATION – **1100 MILLECENTO.**

SINCE 1979, THE RELATED GROUP HAS CULTIVATED A REPUTATION FOR DESIGN EXCELLENCE AND INNOVATIVE PARTNERSHIPS. WE HAVE BROUGHT TOGETHER THE WORLD'S BEST URBANISTS, ARCHITECTS, INTERIOR DESIGNERS, AND REAL ESTATE MINDS TO THE BENEFIT OF MIAMI AND OTHER DESIGN-SAVVY CITIES THROUGHOUT THE WORLD. THIS LATEST COLLABORATION BETWEEN CARLOS OTT AND PININFARINA IS ONE OF OUR MOST PROLIFIC PAIRINGS... RAISING THE BAR ONCE AGAIN FOR THE STANDARD OF LIVABLE DESIGN.

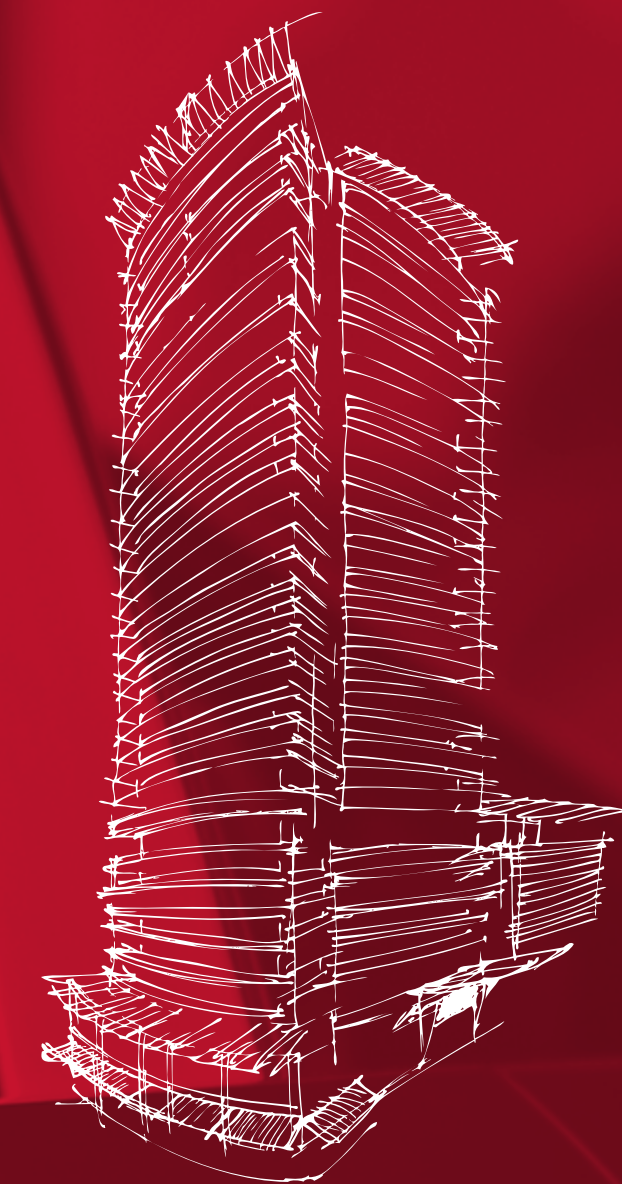


Jorge M. Pérez

CHAIRMAN & CEO THE RELATED GROUP



PASSIONE



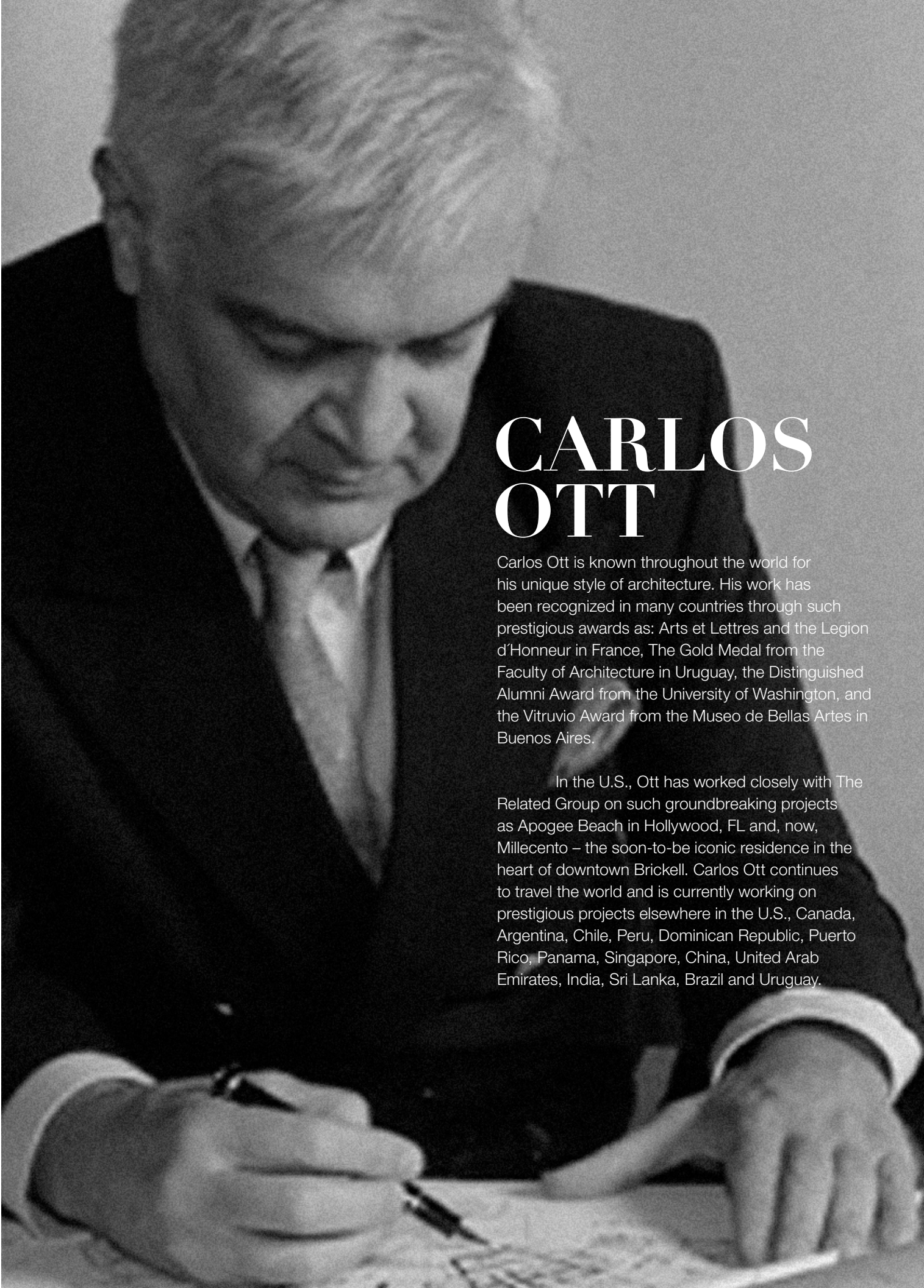
LEGENDARY DESIGN BY
PININFARINA & CARLOS OTT



P. PININ FARINA

Founded by Battista Pininfarina in 1930, the name Pininfarina has become synonymous with the world's most sought-after automobile designs. From groundbreaking work for Ferrari that began in the 1950s to the iconic design for the 1600 Alfa Romeo Duetto in the 1960s, and decades of engineering and design success, the company is the foremost purveyor of style, form and function in the industry. Millicento marks the first residential collaboration in the United States for the heralded firm.

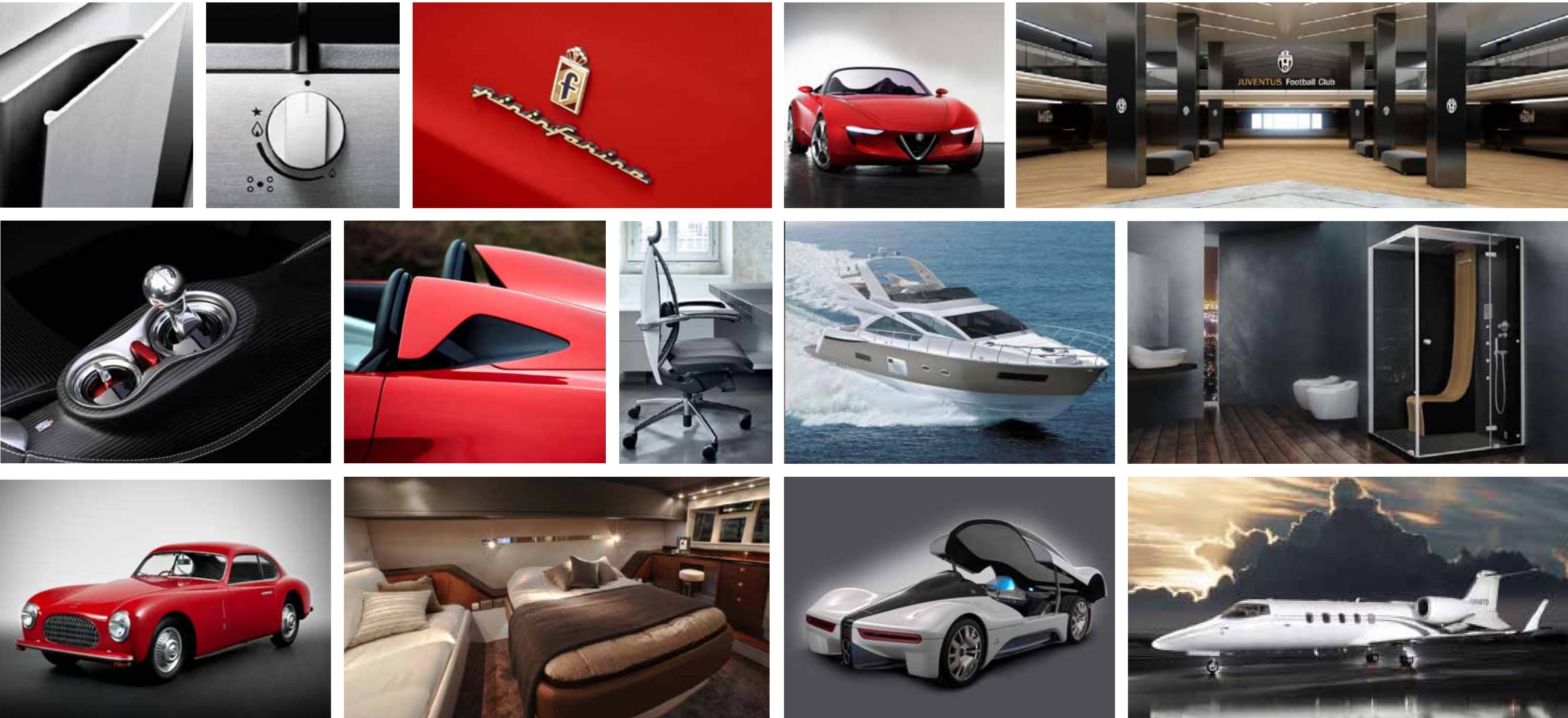
"Nothing seems to be more adapt to the so-called Italian genius than to harmonize beauty and functionality. We are bringing all our passione and Italian flair to Miami. We are thrilled with partnering up with Related Group. We couldn't have chosen a better, more reliable partner in the U.S.,"
- Paolo Pininfarina.



CARLOS OTT

Carlos Ott is known throughout the world for his unique style of architecture. His work has been recognized in many countries through such prestigious awards as: Arts et Lettres and the Legion d'Honneur in France, The Gold Medal from the Faculty of Architecture in Uruguay, the Distinguished Alumni Award from the University of Washington, and the Vitruvio Award from the Museo de Bellas Artes in Buenos Aires.

In the U.S., Ott has worked closely with The Related Group on such groundbreaking projects as Apogee Beach in Hollywood, FL and, now, Millicento – the soon-to-be iconic residence in the heart of downtown Brickell. Carlos Ott continues to travel the world and is currently working on prestigious projects elsewhere in the U.S., Canada, Argentina, Chile, Peru, Dominican Republic, Puerto Rico, Panama, Singapore, China, United Arab Emirates, India, Sri Lanka, Brazil and Uruguay.



DRIVEN BY ELITE INTERNATIONAL STYLE

Nowhere else on Earth delivers the electric pace of Miami; the inventive and exciting design of Carlos Ott; and the bold, sleek aesthetic of Pininfarina.

Millecento is a one-in-a-million chance to capture a dynamic urban lifestyle that has reached its ultimate pinnacle.

Refined city living reaches its absolute highest level at Millecento. Within the 42-story tower, the residences offer an unquestionably rich array of urban amenities and unparalleled access to the best of Brickell. Exotic woods, lustrous Italian leathers, and state-of-the-art technology creates an exceptional experience of quality and style. [From the planned chic PininfarinaCaffé, to an intimate library venue, sculptures and masterpieces that adorn common](#)

[areas and hallways; to a newly-designed fitness oasis and spa operated by Blink by Equinox; to the rooftop Cielo Room](#) – a residents lounge alongside the infinity pool and private cabanas; to the cinema screening room, residents party room, billiards room, and the Club Città bar and lounge, every detail has been hand-selected by Carlos Ott and Pininfarina.

URBAN INSPIRED EVOCATIVE



BRICKELL CITY LIGHTS

Miami – a city known for fashion and culture
 Brickell – a neighborhood renowned for its sophistication
 Carlos Ott – the world's foremost architectural visionary
 Pininfarina – the elite Italian design house respected and revered across the globe

Millecento Residences – the residential address that eclipses all others



With its captivating architectural design, Millecento is destined to become an inspiring new addition to the Miami city skyline. Located in the heart of the prestigious Brickell downtown district, this upscale community is home to some of the world's most luxurious and stylish condominiums, apartments, offices, shops, restaurants, nightclubs, and more. Within walking distance of Millecento, there is the thriving energy and pace of Mary Brickell Village, Brickell Avenue,



Biscayne Bay and the upcoming Brickell CitiCentre – a 4-million square-foot world-class, high-end shopping, entertainment and business complex. To the west lies the striking profile of the all-new Miami Marlins baseball stadium and the University of Miami/Jackson Medical Campus.

Millecento will be the vantage point to see and experience Miami's future unfold.

ACCELERATED BY DESIGN



A MILLION CONNECTIONS

Few places in the world deliver the energy and opportunity of Brickell. And even fewer residences place you in the middle of this dynamic and sophisticated city as does Millecento. Just step out of your front door and you can walk everywhere you'd ever want to go in Miami's upscale downtown district...

- Home to the Largest Concentration of International Banks in the U.S.
- Fantastic Gourmet and Waterfront Dining within 3-block radius
- Chic, High-End Shops and Eclectic Boutiques
- Several World-Class Hotel Accommodations within 1/2-Mile
- Within walking distance from Biscayne Bay and the Miami Riverfront
- Moments to Downtown Miami, South Beach, Key Biscayne, Coconut Grove and Coral Gables



CONCEPTUAL ARTIST DESIGN



CONCEPTUAL ARTIST DESIGN

MARY BRICKELL VILLAGE NIGHT LIFE



OFFERING THE BEST OF BRICKELL

So close to Millecento

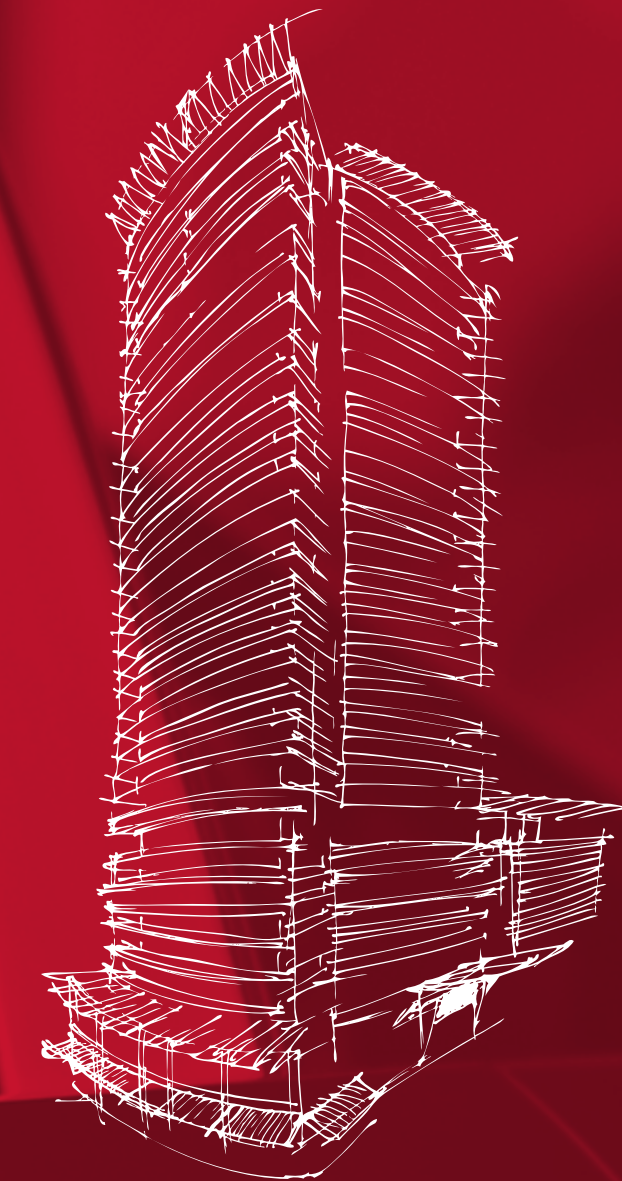
From Millecento, a world of excitement and delight awaits you. Just step outside your door and encounter Miami's most popular destination.

...

Brickell Area Highlights

- | | |
|-----------------------------------|------------------------------|
| 01 The Oceanaire | 20 El Gran Inka |
| 02 The Capital Grille | 21 La Lupita |
| 03 Truluck's | 22 Mint Leaf |
| 04 Perricone's Marketplace & Cafe | 23 La Provence French Bakery |
| 05 Rosa Mexicano | 24 Morton's The Steakhouse |
| 06 P.F. Chang's | 25 Publix Supermarket |
| 07 Gordon Biersch | 26 Crazy About You |
| 08 Dolores | 27 Cross Fit Gym |
| 09 Novecento Bistro Argentino | 28 Brickell Pub |
| 10 Segafredo Zanetti | 29 Puerto Madero |
| 11 Deli Lane Cafe | 30 The Sports Club / LA |
| 12 Epic Hotel / Zuma | 31 Islander Marketplace |
| 13 Il Gabbiano | 32 Marriot Marquis / |
| 14 The Four Seasons | 33 Miami River Walk |
| 15 Conrad Hotel | 34 Grimpa Steakhouse |
| 16 JW Marriot | 35 Brickell Tennis Club |
| 17 Mandarin Oriental Miami | 36 The River Oyster Bar |
| 18 Viceroy Hotels & Resorts | 37 Tobacco Road |
| 19 Sushi Siam | 38 Brickell Park |

ELEGANZA



LEGENDARY DESIGN BY
PININFARINA & CARLOS OTT



BUILDING FEATURES & AMENITIES

- Located in the heart of Brickell, Miami's vibrant financial district, steps away from the hub of restaurants, shops and entertainment venues of Mary Brickell Village and the upcoming Brickell CitiCentre
- Sophisticated interior design by legendary Italian luxury design firm of Pininfarina; celebrated for the exquisite lines of Maserati, Ferrari and Rolls Royce
- Extraordinary architectural design by internationally acclaimed Carlos Ott, made famous by his design of the Opéra de la Bastille in Paris and innumerable notable projects throughout the world. He is best known in South Florida for his high-end iconic condominium developments of Jade Beach, Jade Ocean and Artech



43TH LEVEL
ROOF TOP POOL



PRIVATE SCREENING ROOM



- Urban lifestyle comforts planned for the street level retail spaces such as a Pininfarina Café, a bookstore and other specialty shops
- Elegant double volume entrance lobby exquisitely appointed with sleek Italian furniture and finishes
- Elevated 9th floor level Club Città resort deck fully loaded with a heated pool and spa and beautifully landscaped sun terrace
- Elegant clubhouse with stunning city views, billiards, catering kitchen and multimedia facilities
- State-of-the-art fully equipped fitness center with cardio theatre overlooking the pool deck resort area

- Health spa with men and women's steam and sauna facilities
- Private screening room with state of the art audio visual equipment and theater-style seating
- High-speed internet access in all public areas
- Exclusive 43rd floor Cielo Room amenities deck with private cabanas and infinity pool overlooking dramatic views of Biscayne Bay and the city skyline
- Access to the exclusive Club Mare on neighboring Key Biscayne; a private beach-front paradise to pair with Millecento's ultimate urban enclave

- High-speed elevators
- Permanent installation of curated art collection throughout the building's public spaces
- Exclusive concierge staff and services with convenient mail and receiving desk
- 24-hour complimentary valet parking and secured parking garage
- 24-hour attended security services and controlled access



CLUB CITTÀ



CLUB CITTÁ TERRACE VIEW

Lorem ipsum dolor sit amet, consectetur adipisicing elit, sed do eiusmod tempor incididunt ut labore et dolore magna aliqua. Ut enim ad minim veniam, quis nostrud exercitation ullamco laboris nisi ut aliquip ex ea commodo consequat. Duis aute irure dolor in reprehenderit in voluptate velit esse cillum dolore eu fugiat nulla pariatur. Excepteur sint occaecat cupidatat non proident, sunt in culpa qui officia deserunt mollit anim id est laborum



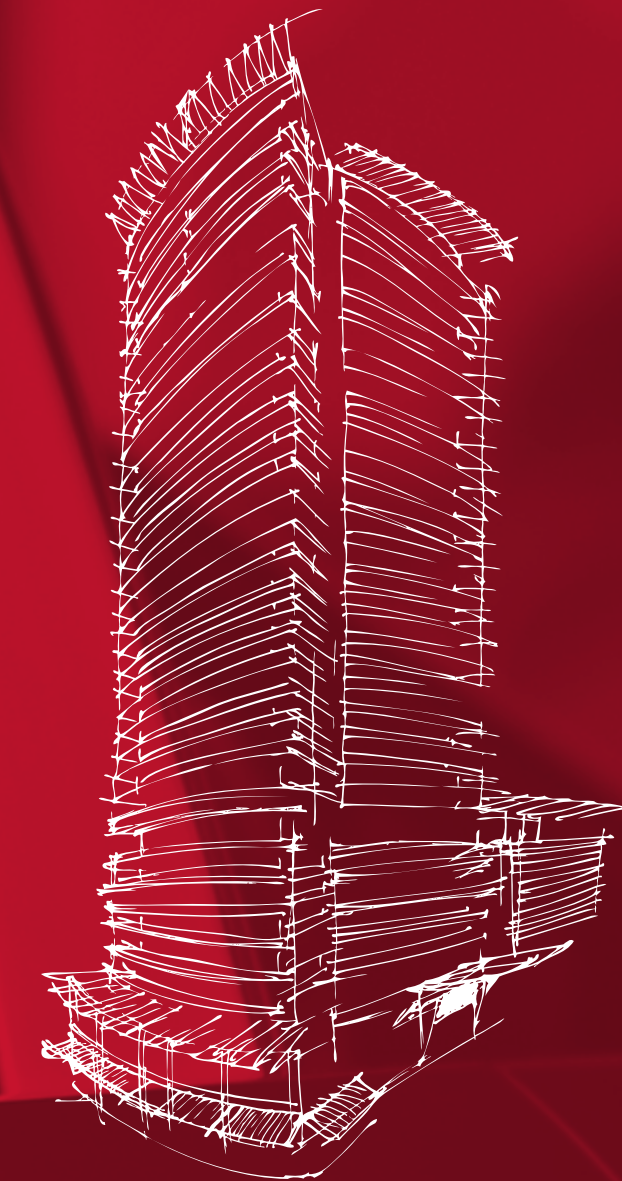
CIELO ROOM

CLUB MARE

- A world beyond compare not even includes a beach
- Magnificent 15,000 sqf beachfront clubhouse
- Fabulous indoor/outdoor dining with ocean view
- Exciting social events/activities for all ages
- Complimentary continental breakfast, seven days a week
- Gymnasium
- Access to the Spa and Fitness Center at The Ritz-Carlton, Key Biscayne Newly remodeled beach-front cabanas
- Access to The Ritz-Carlton Tennis Center
- Reciprocity with West view Country Club
- Adventure Camp valet service
- Food and beverage service at the pool, tiki bar, beach and cabanas



DISEGNO



LEGENDARY DESIGN BY
PININFARINA & CARLOS OTT



GOURMET KITCHENS

A premium selection of contemporary Italian cabinetry

Imported stone counter tops with convenient breakfast bar in most residences

Imported designer porcelain tile floors.

Stainless steel appliance package with refrigerator/ freezer,

glass cooktop/stove, built-in oven, multi-cycle whisper quiet dishwasher and built in microwave with integrated vent hood

Double stainless steel under mount sink, with single-lever European-style pullout faucet sprayer



Italian cabinetry with exceptional detailing

Imported stone counter tops

Full size vanity mirrors with designer lighting

Floors and wet walls clad in imported designer porcelain tile

Designer bathroom fixtures and accessories

Spacious soaking tub and glass enclosed shower

ELEGANT BATHROOMS



TRUMP HOLLYWOOD



THE ST. REGIS BAL HARBOUR



50 BISCAYNE



ICON BRICKELL



THE RELATED GROUP

Millecento is the latest fusion of elite design and modern livability from The Related Group of Florida. With its reputation for working with the world's most respected designers and its track record of numerous successful sell-out properties in South Florida, The Related Group has assembled the finest team of experts to bring this one-of-a-kind project to reality.

Since its inception more than 30 years ago, The Related Group has built and/or managed more than 80,000 apartments and condominium residences with a portfolio worth more than \$10 billion. The secret to their success lies in an innovative approach to over-deliver on all aspects of development from quality to character to timing and beyond. Combined with creative and effective marketing centered around The Related Group as a brand, prospective buyers have come to expect a consistent and reliable level of value, finesse and precision from any project bearing the Related name.